

Weimin QUE, Xiangyi DAI, Min XU & Weiguo LIU

World Heritage Perspective on Wenzhou Alum Mine in Zhejiang Province, P.R. China

Prof. QUE Weimin, College of Urban and Environmental Sciences, University Beijing, wmque@urban.pku.edu.cn

Wenzhou Alum Mine is a typical nonmetallic mine of the traditional mining industry in China, which is urgently to be conserved and utilized as a mining heritage property for sustaining development of local society, economy and culture. Basing on analyzing geographical environment, historical vicissitude and components of heritage, there are three characteristics of the Alum Mine (Fig. 1 & 2)



Fig. 1: The Wenzhou mining location, Alum Mine Heritage, southern Zhejiang Province, East China

with diverse elements of mining heritage; closely integration with regional society; the spatial distribution of mining heritage sites intersect with town area and appears as a cluster of mining vestiges spots and blocks. The Alum Mine meets the criteria (ii), (iii), (iv) and (vi) of World Cultural Heritage. In order to conserve and re-utilize sustainably the mining heritage for the future, this presentation proposes some suggestions - to research deeply the heritage contents, to conserve widely the heritage remains, to manage finely the heritage zone, to interpret and exhibit fully the value of the Alum Mine - and the protected area and buffer zone.

Literature

QUE Weimin: World Heritage Perspective on Mining Heritage-Case Study on Zhejiang Province, funded by Chinese National Natural Science Funding, 2010 – 2012, Beijing, China

<http://www.unescobkk.org/culture/wh/asia-pacific-heritage-awards/jury-member-profiles/que-weimin/> 2013-08-24, 11^h



Fig. 2: The Wenzhou mining installations, Alum Mine Heritage, southern Zhejiang Province, East China

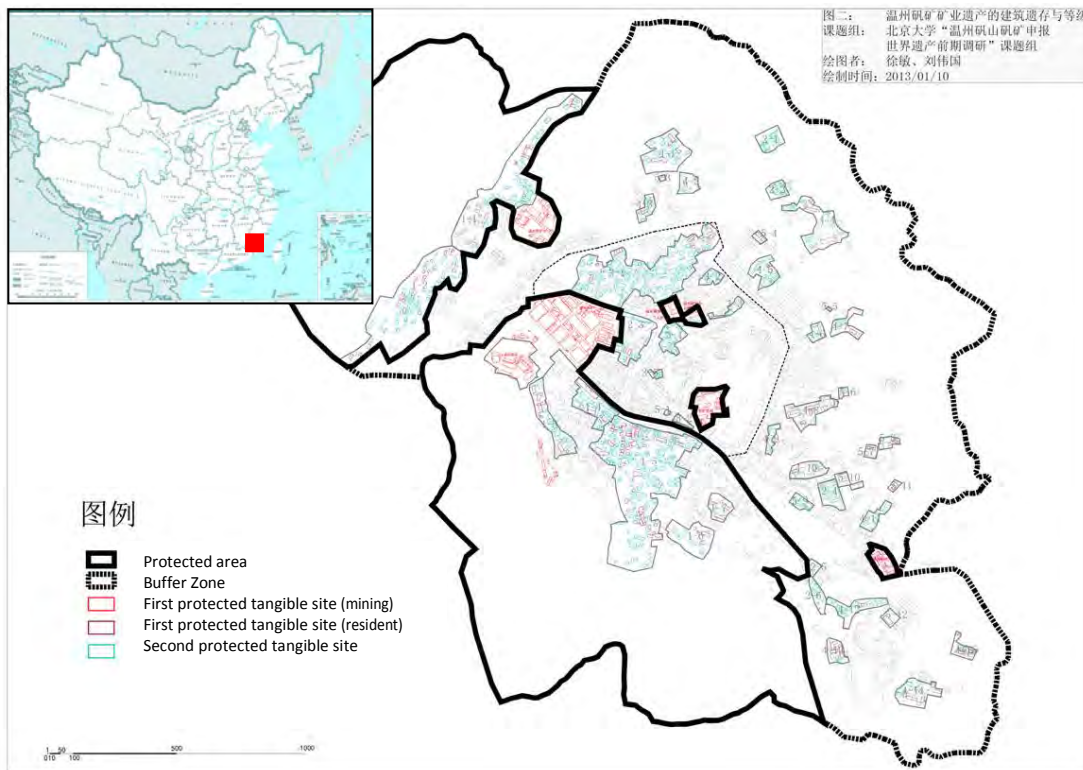


Fig. 3: Sketch of the Wenzhou Alum Mine protection zone criteria for the World Cultural Heritage