

Corrigendum to

“Extreme value modelling of storm damage in Swedish forests” published in Nat. Hazards Earth Syst. Sci., 7, 515–521, 2007

A. Bengtsson¹ and C. Nilsson²

¹Mathematical Statistics, Centre for Mathematical Sciences, Lund University, P.O. Box 118, 22100 Lund, Sweden

²Department of Physical Geography and Ecosystems Analysis, Geobiosphere Science Centre, Lund University, Sölvegatan 12, 22362 Lund, Sweden

Figures 2, 3 and 4 should be replaced by the following:

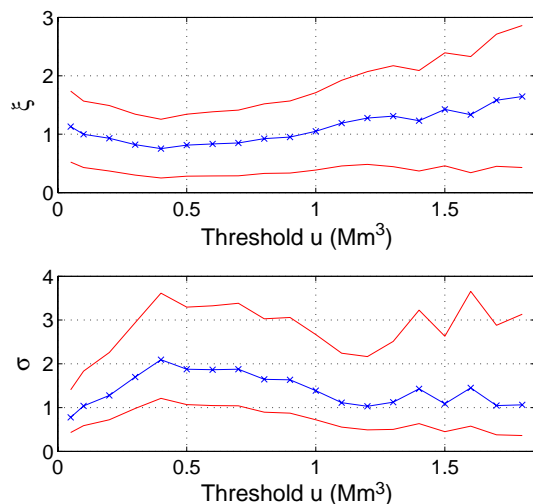


Fig. 2. Estimated shape parameter, ξ , (top) and scale parameter, σ , (bottom) together with corresponding 90% confidence intervals for thresholds $u=[0.05, 1.8] \text{ Mm}^3$.

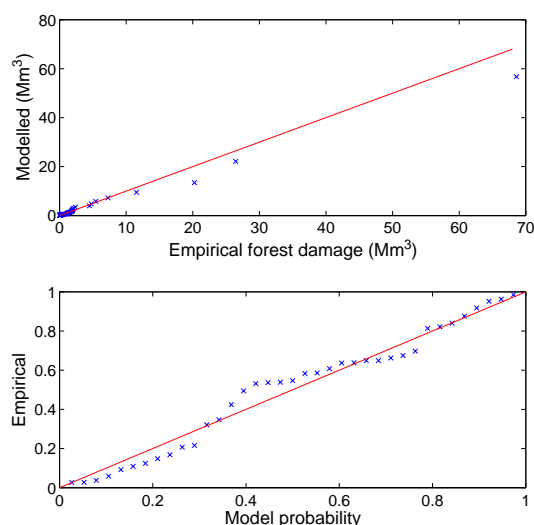


Fig. 3. Median-unbiased quantile (top) and probability (bottom) plots for a generalised Pareto distribution with estimated parameters $\hat{\xi}=1.00$ and $\hat{\sigma}=1.04 \text{ Mm}^3$.

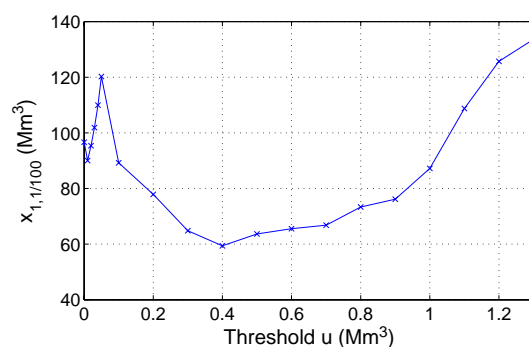


Fig. 4. The theoretical hundred year storm damage defined as the quantile $x_{1,1/100}$, plotted as a function of chosen threshold.

Correspondence to: A. Bengtsson
 (ab@maths.lth.se)