

High-resolution refinement of a storm loss model and estimation of return periods of loss-intensive storms over Germany

M. G. Donat^{1,3}, T. Pardowitz¹, G. C. Leckebusch^{1,4}, U. Ulbrich¹, and O. Burghoff²

¹Institute of Meteorology, Freie Universität Berlin, Berlin, Germany

²Gesamtverband der Deutschen Versicherungswirtschaft e.V., German Insurance Association, Berlin, Germany

³Climate Change Research Centre, University of New South Wales, Sydney, Australia

⁴School of Geography, Earth and Environmental Sciences, University of Birmingham, Birmingham, UK

Received: 13 January 2011 – Revised: 10 September 2011 – Accepted: 18 September 2011 – Published: 25 October 2011

Abstract. A refined model for the calculation of storm losses is presented, making use of high-resolution insurance loss records for Germany and allowing loss estimates on a spatial level of administrative districts and for single storm events. Storm losses are calculated on the basis of wind speeds from both ERA-Interim and NCEP reanalyses. The loss model reproduces the spatial distribution of observed losses well by taking specific regional loss characteristics into account. This also permits high-accuracy estimates of total cumulated losses, though slightly underestimating the country-wide loss sums for storm “Kyrill”, the most severe event in the insurance loss records from 1997 to 2007. A larger deviation, which is assigned to the relatively coarse resolution of the NCEP reanalysis, is only found for one specific rather small-scale event, not adequately captured by this dataset.

The loss model is subsequently applied to the complete re-analysis period to extend the storm event catalogue to cover years when no systematic insurance records are available. This allows the consideration of loss-intensive storm events back to 1948, enlarging the event catalogue to cover the recent 60+ years, and to investigate the statistical characteristics of severe storm loss events in Germany based on a larger sample than provided by the insurance records only. Extreme value analysis is applied to the loss data to estimate the return periods of loss-intensive storms, yielding a return period for storm “Kyrill”, for example, of approximately 15 to 21 years.

1 Introduction

Winter storms are one of the major natural hazards in Europe, often entailing substantial damage, the risk of injury or even loss of lives. Affecting relatively large areas compared to other hazards, these events cause high loss amounts, often aggregating to several billion €. For example, the recent storm “Kyrill” in January 2007 (storm names used in this study as assigned by the German Weather Service, DWD) caused insured losses exceeding four billion €, even greater total economic losses, at least 46 fatalities and uprooted more than 60 million trees in Central Europe (Fink et al., 2009). Average annual wind-storm-related insured costs in Germany to residential buildings alone add up to about 900 million € (GDV, 2006, 2009). High losses also occur to public, private and economic sectors, but the most reliable and systematic records are those collected by insurance companies. For statistical purposes, the German Insurance Association (Gesamtverband der Deutschen Versicherungswirtschaft e.V., GDV) compiles loss data from most insurance companies present on the German market. In Germany, almost all the private sector is insured, and the insurance density of residential buildings is about 85 %. It can, therefore, be assumed that the GDV loss records provide a representative picture of storm losses in this region.

The high relevance of storm losses is a strong incentive to develop models to estimate losses in order to identify high-risk regions, for example, or to estimate future changes on the basis of climate model simulations. Various approaches are found in the literature to calculate losses caused by high wind speeds. Some use polynomial – or exponential relations between loss and wind speeds (e.g., Palutikof and Skellern 1991; Dorland et al., 1999; Klawa and Ulbrich 2003), and are, thus, based on physical assumptions. They consider, for example, the kinetic energy ($\sim v^2$) of the wind or, more



Correspondence to: M. G. Donat
(m.donat@unsw.edu.au)

relevantly, the wind power ($\sim v^3$), i.e., the rate at which work is performed by the kinetic energy of the wind. Other approaches derive local empirical relations between vulnerability and wind speed and calculate the losses as a function of hazard (i.e., wind speed related to probability), vulnerability and the spatial distribution of values (e.g., Heneka et al., 2006; Schwierz et al., 2010). A probabilistic approach for the calculation of storm losses was recently suggested by Heneka and Hofherr (2011).

The statistical characteristic of extreme wind speeds and storms under recent climate conditions (in terms of assigning return periods to historic extreme storm events) was investigated by a small number of previous studies. Hofherr and Kunz (2010) and Kunz et al. (2010), for example, analysed extreme local wind speeds for different return periods in Germany using high-resolution wind datasets derived from regional climate models and a high-resolution limited-area model. To assess the occurrence of severe storms from a more integrated perspective, Della-Marta et al. (2009) calculated continental-scale extreme wind indices for Europe and estimated the return periods of storm events during the second half of the 20th century. Brodin and Rootzen (2009) investigated extreme wind storm losses using data provided by the largest Swedish insurance company.

For this study, loss data in a high temporal and spatial resolution (i.e., daily loss records for 439 administrative districts in Germany) were made available by GDV for the first time for scientific purposes. These data permit the definition of the loss model at a high spatial resolution, and on the basis of individual events rather than annual loss sums. Taking into account specific regional characteristics regarding wind-loss relations, such a refinement allows accurate calculations of both the spatial loss distribution and cumulated losses for severe storm events. In a further step, the refined loss model is used to extend the loss data catalogue backwards, for years when losses were not yet systematically recorded by insurance companies. This is done by applying the loss model to NCEP reanalysis, enabling us to identify loss-intensive storms back to 1948. The extended storm catalogue finally permits a more precise estimation of the return periods of severe winter storms in Germany. The two main objectives of this paper are to investigate the wind-loss relation on a regional scale and to quantify the risk of extreme storm losses in Germany.

A description of the data and methods used is presented in Sect. 2 of this paper, followed by an explanation of the storm loss model in Sect. 3, including its verification for a number of storm events. Section 4 investigates the return periods of severe and loss-intensive winter storm events on the basis of both insurance loss records and calculated losses. The study concludes with a summary and discussion of the results in Sect. 5.

2 Data and methods

This section summarises the data and methods used for the work presented in this article. The development of the storm loss model is, however, a central point of this study and its concept will be described separately in Sect. 3.

2.1 Insurance loss data

For this study, the GDV provided loss records on a daily basis, for each of the 439 administrative districts (*Landkreise*) of Germany. This number reflects the status in 2006; subsequent (political) district reforms have been ignored for reasons of homogeneity. The administrative districts comprise of areas between 250 and 3000 km². The loss data contain information on damage to residential buildings (“comprehensive insurance on buildings”, in German *Verbundene Wohngebäude Versicherung*, hereafter VGV) caused by storm or hail. It may be assumed that losses during the winter season are exclusively caused by extra-tropical storms, whereas convective events (including hail) play a major role during summer. For the purpose of this study, we, therefore, restricted our analyses to the winter half year (October to March). We further checked whether the identified loss events were indeed related to a synoptic-scale winter storm by reviewing historic weather records. On the spatial scale of administrative districts, daily VGV loss data are available for the years 1997 to 2007. These data were used to derive the regional relations between wind speeds and losses (compare Sect. 3.1).

For investigating local wind-loss relations, only those storm events generating significant losses were considered. Major loss events were identified from loss frequencies (i.e., number of claimed losses relative to the total number of insurance contracts) if the loss frequency on a specific day (or a sequence of up to three consecutive days) exceeded the loss frequency of an average day by factor 7. In Germany, this is equivalent to a loss frequency larger than 1.5 ‰. Note that this stationary criterion does not account for changes in the vulnerability of buildings with time. On the basis of this criterion, 34 major loss events were identified in the 11-year period from 1997 to 2007 (Table 1). They were all associated with meteorological storm situations and were used to calibrate local wind-loss relations (Sect. 3.1). The loss amounts were calculated in loss ratios, i.e., the ratio between insured claims and totally insured values (unit: € per 1000€ i.e., in ‰). An advantage of this measure is that inflation can be neglected as it is included both in insured values and in the loss.

The high-resolution loss data to residential buildings are only available for the relatively short period since 1997, but for the motor vehicle own damage insurance (*Kraftfahrt-Fahrzeugversicherung* or *Kasko* for short), both regional and temporal details of losses have been recorded since 1984 already. These additional insurance data were used to extend

the insurance loss catalogue to enlarge the data basis for our investigations. Vehicle damage caused by natural hazards showed high correlations with the VGV data for the overlapping period 1997–2007; particularly for days with significant losses and when summer and winter seasons were distinguished. This close relation was used to derive daily loss ratio estimates for the 1984–2008 period. A linear regression between country-wide losses to vehicles (loss needs, i.e., ratio between claims expenditure in € and annual units; one annual unit represents one vehicle which was insured for a complete year) and to residential buildings (loss ratio) is calculated based on daily country-wide losses (Fig. 1), with a coefficient of determination R^2 reaching 0.88. This regression was found to be optimal for the extended winter season from October to April. These loss estimates to residential buildings simulated from the vehicle physical damage insurance data are hereafter referred to as VGV_Sim. They are used for validation purposes and for extending the loss data catalogue and permit loss estimates in good agreement with VGV.

2.2 Meteorological data

Wind fields from two different reanalysis datasets are used to derive the local relationships between wind speed and loss and to calculate storm losses for historical events. Both ERA-Interim (Dee et al., 2011) and NCEP (Kalnay et al., 1996) reanalyses cover the whole period 1997–2007 for which VGV data are available to calibrate the loss functions (see Sect. 3.1). These relations can then be applied to the complete datasets and allow the calculation of storm losses back to 1948 (NCEP) and 1989 (ERA-Interim).

The atmospheric model employed to produce the ERA-Interim reanalysis uses a T255 spherical-harmonic representation for the basic dynamical fields, on 60 vertical levels up to 0.1 hPa. The surface fields are provided on a reduced Gaussian grid with approximately uniform 79 km (0.7°) spacing. The model behind the NCEP reanalysis is considerably coarser in resolution; it works on a T62 spectral grid with 17 vertical levels up to 10 hPa. The NCEP data are provided on a $2.5^\circ \times 2.5^\circ$ grid (approximately 180 km \times 275 km over Germany).

Daily maximum near-surface wind speeds are used for the loss calculations. ERA-Interim provides the wind speed in 10 m height as a model output, and from NCEP we use the wind speed on the lowest model layer. The near-surface wind speeds are available as six-hourly instantaneous values, i.e., four values per day. The daily maximum is calculated as the maximum of these four values (and is hereafter referred to as *wimax*). Additionally, a maximum gust wind speed of all model integration time steps is available for ERA-Interim. As the physical processes related to wind gusts are generally not resolved by atmospheric models on the scale considered, gusts are calculated as a model diagnostic. The gust parameterisation implemented in ERA-Interim takes into account

Table 1. Major loss events in the period 1997–2007 identified from the VGV data are used for the calibration of the loss model. Events are identified on the basis of loss frequencies (i.e., number of claimed losses relative to the total number of insurance contracts) exceeding 1.5 %.

Name	Start Date	End Date	Loss Ratio VGV [%]
Ariane	19970212	19970214	0.005
Daniela	19970218	19970221	0.013
Heidi	19970224	19970226	0.007
Sonja	19970326	19970329	0.015
Fanny	19980103	19980106	0.011
Elvira-Farah	19980303	19980306	0.017
Xylia-Winnie	19981023	19981029	0.020
Maren	19981212	19981214	0.003
Lara	19990204	19990206	0.008
Anatol	19991202	19991205	0.027
Lothar	19991224	19991227	0.110
Kerstin	20000128	20000131	0.007
Oratia	20001029	20001031	0.007
Ilse	20001212	20001214	0.003
Noah	20011227	20011229	0.005
Jennifer	20020125	20020130	0.028
Natascha	20020203	20020205	0.004
Wisla	20020218	20020220	0.003
Zarah	20020221	20020224	0.004
Anna	20020225	20020301	0.031
Herta	20020308	20020310	0.004
Jeanett	20021026	20021029	0.102
Calvann	20030101	20030103	0.008
Gerda-Hanna	20040111	20040113	0.006
Queenie	20040130	20040202	0.013
Ursula	20040206	20040209	0.004
Oralie	20040319	20040322	0.019
Pia-Quimbarga	20041116	20041120	0.003
Erwin	20050107	20050109	0.010
Ingo	20050119	20050121	0.005
Ulf	20050211	20050213	0.009
Dorian	20051215	20051217	0.016
Britta	20061031	20061102	0.003
Kyryll	20070117	20070119	0.242

the static stability of the boundary layer and surface roughness to calculate a standard deviation of the near-surface wind speeds (ECMWF, 2007). The maximum gust speed is then estimated by adding a term including this standard deviation to the simulated 10 m wind speed. This parameter is hereafter referred to as *gust*. Note that, owing to their resolution, reanalysis wind speeds are representative of the large-scale wind conditions and generally differ from wind recordings at specific station locations. Reanalysis winds also show a much lower spatial variability in comparison to wind observations. Particularly over complex terrain there may be larger deviations between reanalysis and measured wind speeds (Shravan Kumar and Anandan, 2009), with partly unrealistic

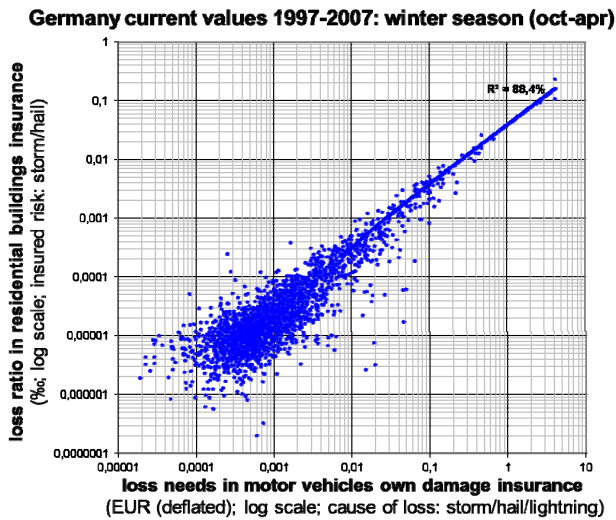


Fig. 1. Regression of loss needs in motor vehicle insurance and losses to residential buildings caused by natural hazards during the extended winter season October–April ($y = 0.040 \cdot x$). The dots represent country-wide daily loss values.

simulated wind speeds (Della-Marta et al., 2009). However, Kiss et al. (2009) found ERA-Interim-based wind power estimates adequate in comparison with observations, particularly when scaling the reanalysis wind speeds towards the measurements. The use of mesoscale models, accounting for local orographic characteristics, provides high-resolution wind fields with a considerably higher spatial variability and yields good agreement with wind speed observations (Hofherr and Kunz, 2010). However, the approach used in this study to calculate storm losses normalises wind speeds relative to the local wind climatology and, thus, leads to considerably smoothed hazard fields, also when applied to regional climate model wind speeds (compare Donat et al., 2010a). Nevertheless, the use of high-resolution wind fields may be beneficial for calculating storm losses.

2.3 Identifying loss-intensive wind storm events from daily loss data

The refined loss model and also the daily VGV_Sim insurance data are used to extend the loss data catalogue in this study. For this purpose, daily loss sums for Germany are calculated on the basis of both VGV_Sim insurance records and by applying the refined loss model to the reanalysis data. To consider losses from storm events (which may affect Germany for more than one day), we calculated five-day running sums of losses. Further, a declustering criterion is applied to ensure that only independent storm events are considered for the calculation of return periods of the storm events. To this end, the individual storm events must occur within non-overlapping five-day periods which are separated by at least one day. This time interval appears reasonable to account

for typical travelling velocities of extra-tropical storms (order of magnitude $\approx 10^3$ km per day), but also for sequences of storms which may hit Germany within a few days. We subsequently checked the meteorological conditions during the identified storm episodes to establish whether the occurrence of storm losses were reasonable. This was done by examining the weather records in the *Berliner Wetterkarte* (since 1950; Berliner Wetterkarte, 2009) and *Potsdamer Wetterkarte* (before 1950; Potsdamer Wetterkarte, 1949).

The most significant losses related to a storm generally occur only during one or two days; hence the calculated losses for the individual storm events are mostly similar if, for example, three-day running sums are considered instead of five-day sums. Some sensitivity is found only for “Vivian” and “Wiebke”, which caused heavy damage within only five days in February 1990. In the case of five-day sums, the two storms are considered as one loss event, but shorter time intervals would mean that the two loss events would not be captured properly, as the declustering criterion would lead to the exclusion of one of the two events. Therefore, calculating five-day running sums seems to be a good compromise in terms of capturing all major loss events contained in the data. However, it means that sequenced storm events occurring within a five-day period are considered as one loss event.

2.4 Extreme value analysis

To estimate the statistical characteristics of the extreme storm losses, we fit a Generalised Pareto Distribution (GPD, Coles 2001) to the loss data of the different events. In recent studies the GPD was, for example, applied to model local extreme wind speeds (Kunz et al., 2010) and also cumulated indices for storm severity (Della-Marta et al., 2009). Like them, we use the Peaks Over Threshold (POT) approach, considering all loss ratios exceeding a specific threshold for fitting the GPD. A GPD distributed variable z has a cumulative distribution function H that is characterised by threshold (u), shape parameter (ξ) and the scale parameter (σ):

$$H(z, u, \sigma, \xi) = 1 - \left(1 + \frac{\xi(z-u)}{\sigma} \right)^{-1/\xi} \quad (1)$$

The parameters ξ and σ are estimated following the Maximum Likelihood principle. For calculation of the N -year return level, Eq. (1) can be rewritten as

$$z_N = u + \frac{\sigma}{\xi} [(\lambda N)^\xi - 1] \quad (2)$$

where λ is the mean number of threshold exceedences per year.

The GPD is sensitive to the specific threshold of values used for the POT approach. The threshold should be large enough (i.e., decreasing the sample size) to ensure near-asymptotic behaviour of the values considered, but the sample should also be large enough to minimise the sampling uncertainty. To achieve this, we perform an optimisation of the

thresholds. The GPD fit is calculated for all possible thresholds in the samples by scanning through the ordered sample of loss values and decreasing the number of considered events one by one. For all of these possible thresholds, the scale and shape parameters are estimated (see Fig. 2 for an example). Generally, higher thresholds lead to larger confidence intervals (estimated using the analytical Delta method) of the parameter estimates. As the result of the optimisation process, we consider the lowest possible value for which the 95 % confidence interval for ξ and σ still overlaps with the confidence intervals for all higher thresholds.

3 High-resolution refinement of the loss model

3.1 Concept of the loss model

The loss model refined and applied in this study is based on the assumptions that storm losses occur locally for wind speeds exceeding the local 98th percentile of daily maximum wind speeds and grow according to a cubic function between wind and loss. Such an approach was successfully applied in a number of previous studies, proving its applicability for the calculation of storm losses in a (spatially and temporally) cumulated perspective (Klawa and Ulbrich, 2003; Leckebusch et al., 2007; Pinto et al., 2007; Donat et al., 2010a, 2011a). In these studies, a linear regression was used to scale country-wide annual loss potentials to the insurance loss ratios.

In this study, the availability of high-resolution insurance loss data (see Sect. 2.1) allows a refinement of the loss calculations. This refinement is based on the assumption that the coefficients defining the relation between wind and loss may differ regionally. This means that the linear regression to scale the wind loss potential term $\left(\frac{v_{\max}}{v_{98}} - 1\right)^3$ towards the observed loss ratios is determined individually for each region (i.e., administrative district). The regression is calculated on the basis of the 34 major loss events apparent from the VGV data from 1997 to 2007 (Table 1). The regional wind-loss relation is calculated according to:

$$\text{loss ratio (region, event)} = A(\text{region}) \cdot \max \left[0; \left(\frac{v_{\max}(\text{region, event})}{v_{98}(\text{region})} - 1 \right)^3 \right] + B(\text{region}) \quad (3)$$

In this function, v_{\max} is the maximum wind speed (or maximum wind gust, respectively) during a storm event in a region, and v_{98} is the local 98th percentile of daily maximum wind speeds (gusts). $A(\text{region})$ is the region-specific slope of the regression and $B(\text{region})$ is the axis intercept. This approach, thus, accounts for specific regional loss characteristics apparent from Fig. 3a. Neighbouring districts may

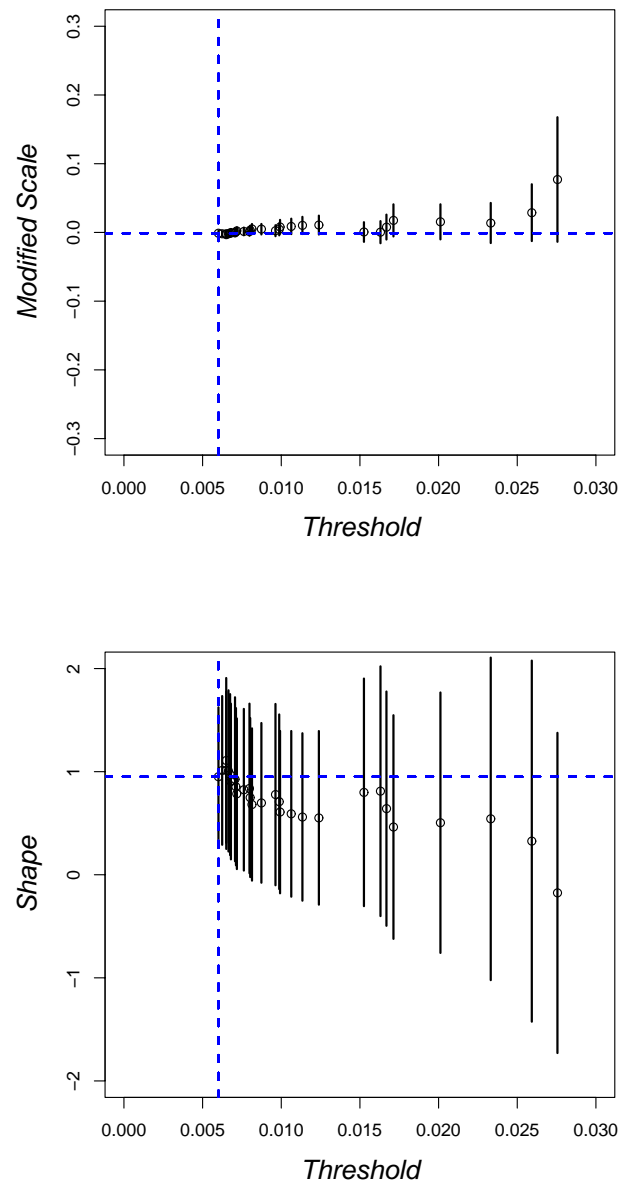


Fig. 2. Estimates of the GPD parameters ξ (shape, bottom panel) and σ (scale, top panel) and the respective 95 %-confidence intervals (y-axis) for the different thresholds (x-axis). This example shows the threshold optimisation for the extreme value fits of the VGV insurance data. The fit parameters are estimated for all events in the dataset, increasing the threshold for the POT approach one by one. Blue vertical line: optimised threshold (see text for explanation); horizontal line: GPD parameters for optimised threshold.

show considerably different loss amounts despite being affected by similar large-scale wind conditions. A known effect is, for example, generally lower loss ratios in urban municipalities (with predominantly apartment buildings) compared to nearby, more rural districts (with predominantly detached houses). These regional differences can be explained by the effect that insured sums per object are on average

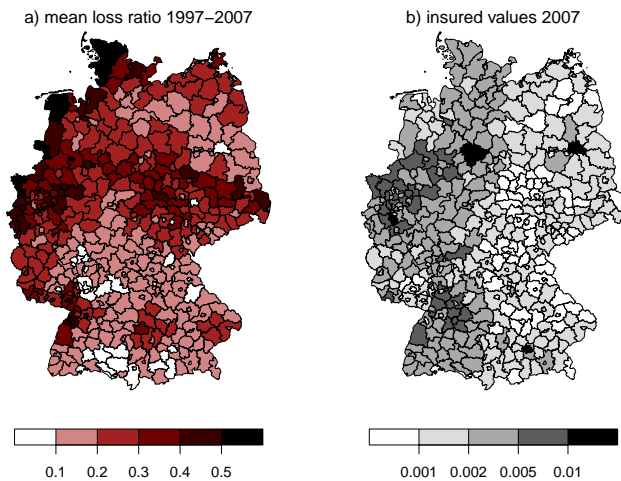


Fig. 3. Spatial distribution of the insurance loss data. **(a)** mean winter half year loss ratios (VGV, years 1997–2007), normalised with loss ratio sum of all 439 administrative districts (unit: %) **(b)** insured values for the year 2007, normalised with total sum of all 439 administrative districts.

higher in the first than in the second region. Note that the normalisation of wind speeds relative to the local extreme wind climatology (represented by the 98th percentile) leads to a spatial smoothing of the hazard fields in comparison to the absolute wind speeds. This is also true in the case of high-resolution wind fields as provided by regional climate models, for example. The slope of the regression shows a strong relation to the mean losses (compare Fig. 3a), as may be expected since it is used to scale the wind-based loss potential towards observed loss amounts. However, the temporal variability of the calculated losses is determined by the cubic wind term.

To calculate the Germany-wide loss ratio, the losses in the individual regions are added up, weighted by the locally insured sum (Fig. 3b).

cumulated loss ratio (event) =

$$\frac{\sum_{\text{regions}}^{\text{Germany}} \text{value}(\text{region}) \cdot \text{loss ratio}(\text{region}, \text{event})}{\sum_{\text{regions}}^{\text{Germany}} \text{value}(\text{region}, \text{year})} \quad (4)$$

The local regression coefficients determined for loss calculations (based on ERA-Interim gust wind speeds, for example) are presented in Fig. 4. Distinct regional differences are apparent, in particular, considering the slope of the regression A. This coefficient may be interpreted as a measure for the local loss sensitivity to wind storm. High (low) values denote a strong (weak) increase of losses for higher wind speeds. The highest values are found in the north-western

part of Germany, particularly in the federal state of North Rhine-Westphalia, whereas the lowest values occur in the eastern and southern parts of Germany. The axis intercept B is generally close to zero when the regression is calculated on the basis of storm events. If the regression were to be calculated on the basis of annual loss sums, larger magnitudes of B would be apparent. This may be interpreted as a basic loss ratio accounting for losses emerging on days when no extreme wind speeds (exceeding the local 98th percentile) occurred. The coefficient of determination R^2 exceeds 0.7 in most areas (Fig. 4, right panel), which means that the linear regression explains the largest part of the variance of losses. Lower values of R^2 down to about 0.2 are locally found in the south-eastern and north-eastern parts of Germany. The R^2 average over all districts is 0.78, confirming a generally well-determined link between losses and cubic wind speeds.

The regional regression coefficients may differ for the calculation of losses based on the different wind datasets, in particular, with regard to the magnitudes of the coefficients. The basic pattern showing higher values of A for the north-western parts of Germany is, however, common to the regressions on the basis of all different wind data considered. A specific feature of the loss calculations on the basis of NCEP winds are some districts in the central eastern parts of Germany, where comparatively high values for the coefficient A are found (not shown). Here, the storms “Jeanett” and “Kyrill” caused high losses (compare Fig. 6, upper row), but the relatively coarse-resolution NCEP model does not produce sufficiently high wind speeds in this region during these storms. This is consequently compensated by a steeper slope of the regression.

3.2 Loss calculations for severe storm events

In this section, the loss model is validated by comparing the calculated losses with the insurance loss records, with regard to country-wide cumulated losses and the spatial distribution of losses. The Germany-wide loss ratios for the 34 storm events in the period 1997–2007 that were used to determine the coefficients of the regression between loss and wind speed are shown in Fig. 5, in descending order according to their VGV loss ratios. Note that for the purpose of loss model validation, the local losses for each event were calculated using the linear regression derived from the other 33 events, leaving out the particular storm itself. The black and red bars represent the loss sums calculated from the VGV and VGV_Sim insurance data; the other three bars indicate the loss sums calculated on the basis of the different meteorological datasets (ERA-Interim *wimax* and *gust*, and NCEP *wimax*). It is obvious that the losses in this eleven-year period are dominated by three major events: “Kyrill” (Jan 2007), “Lothar” (Dec 1999) and “Jeanett” (Oct 2002). Note the different characteristics of these storms: during “Kyrill” and “Jeanett” large parts of Germany were affected by high wind speeds, leading to high accumulated losses, whereas

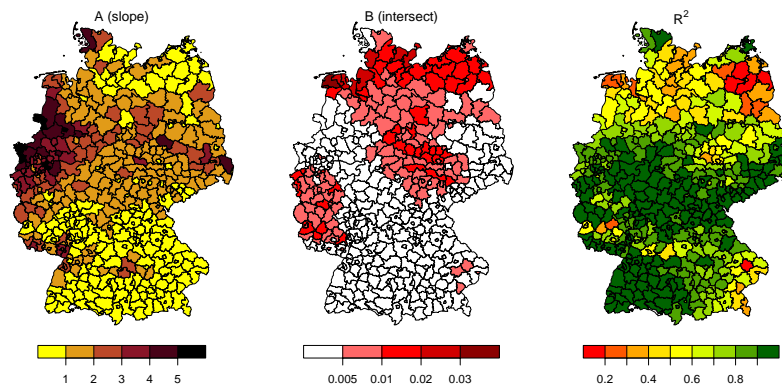


Fig. 4. Regression coefficients for scaling the local loss potentials calculated from ERA-Interim gust wind speeds towards the insurance loss records (VGV). Left: slope of the linear regression (coefficient *A*). Middle: axis intercept (coefficient *B*). Right: coefficient of determination (R^2).

“Lothar” was characterised by extremely high wind speeds and related losses restricted to the southern part of Germany. Thus, maximum local losses were reached during “Lothar” (highest loss ratio in a district: 1.38 ‰), and local losses are somewhat smaller for the other two events (up to 1.19 ‰ for “Kyrill” and 0.43 ‰ for “Jeanett”). Also, other events may have caused severe local losses in specific regions, but from the cumulative point of view, losses during the three major events exceed those in the other loss events by about one order of magnitude. Although some differences are apparent for the most destructive events, the cumulated losses based on the VGV and VGV_Sim insurance data generally agree well.

In general, the losses calculated from the different reanalysis wind fields reproduce the insurance data well (Fig. 5a). For storm “Kyrill” the losses are underestimated by all wind datasets by about 15 to 20 % in comparison to the VGV loss records, but are comparable to losses based on VGV_Sim. Underestimation of the most severe events may be partly explained by the specific regulation practices of some insurance companies: to manage the large numbers of claims after very loss-intensive events, companies often perform simplified and optimised loss adjustment processes. This may contribute to disproportionately high loss values for some major events. However, owing to economic self-interest and regulatory conditions, the insurance companies are obliged to regulate the losses adequately and in accordance with the terms of insurance. Another contribution may come from demand surge effects after large events, i.e., the increase in costs for construction materials and labour as a consequence of the increased demand (Pielke Jr. et al., 2008; Olsen and Porter, 2011). Those company-specific and socio-economic effects are not accounted for by the loss model approach presented here. Nor does the loss model account for additional meteorological parameters (such as heavy precipitation, small-scale turbulence, storm duration) which may have an effect on the loss amount.

Differences are also found for some weaker events (Fig. 5b), which are overestimated by individual reanalysis wind datasets (e.g., storms “Daniela”, “Ulf”, “Oratia”, “Noah”). These anomalies are, however, not systematic for the different reanalysis data and are generally explained by specific realisations of the storms with respect to intensity and area affected in the different datasets. The loss calculations based on NCEP strongly underestimate the two major storms “Lothar” and “Jeanett”. In particular, the anomalies for the first reveal a peculiarity of the NCEP data. “Lothar” was a relatively small-scale secondary depression associated with a strong steering cyclone (Ulbrich et al., 2001) which deepened explosively over the eastern Atlantic close to Europe and caused extremely severe damage over France, Switzerland and the southern parts of Germany. The coarse-resolution NCEP model does not capture this small cyclone system and, hence, fails to simulate the extremely high wind speeds leading to losses in southern Germany. For “Jeanett”, NCEP simulates too low wind speeds in many regions and particularly over the central parts of Germany. Nevertheless, NCEP provides a plausible picture of losses for most events. Apart from the described discrepancies, the use of these data is particularly advantageous for this study as they cover a period of more than 60 years, forming a robust basis for the estimation of return periods of severe storms (see Sect. 4).

Also the spatial distribution of losses in the different administrative districts is reproduced well by the loss model (Fig. 6). This is demonstrated for the four most loss-intensive events, but is also true for most of the weaker events. For all these events, the specific spatial characteristics of the insurance loss data can also be found in the wind-based loss model results. For the storm “Kyrill” the loss model slightly underestimates the losses, particularly over the western part of Germany. As this region is characterised by relatively high insured values (compare Fig. 3b), these differences are the main factor contributing to the underestimation when considering country-wide cumulated losses.

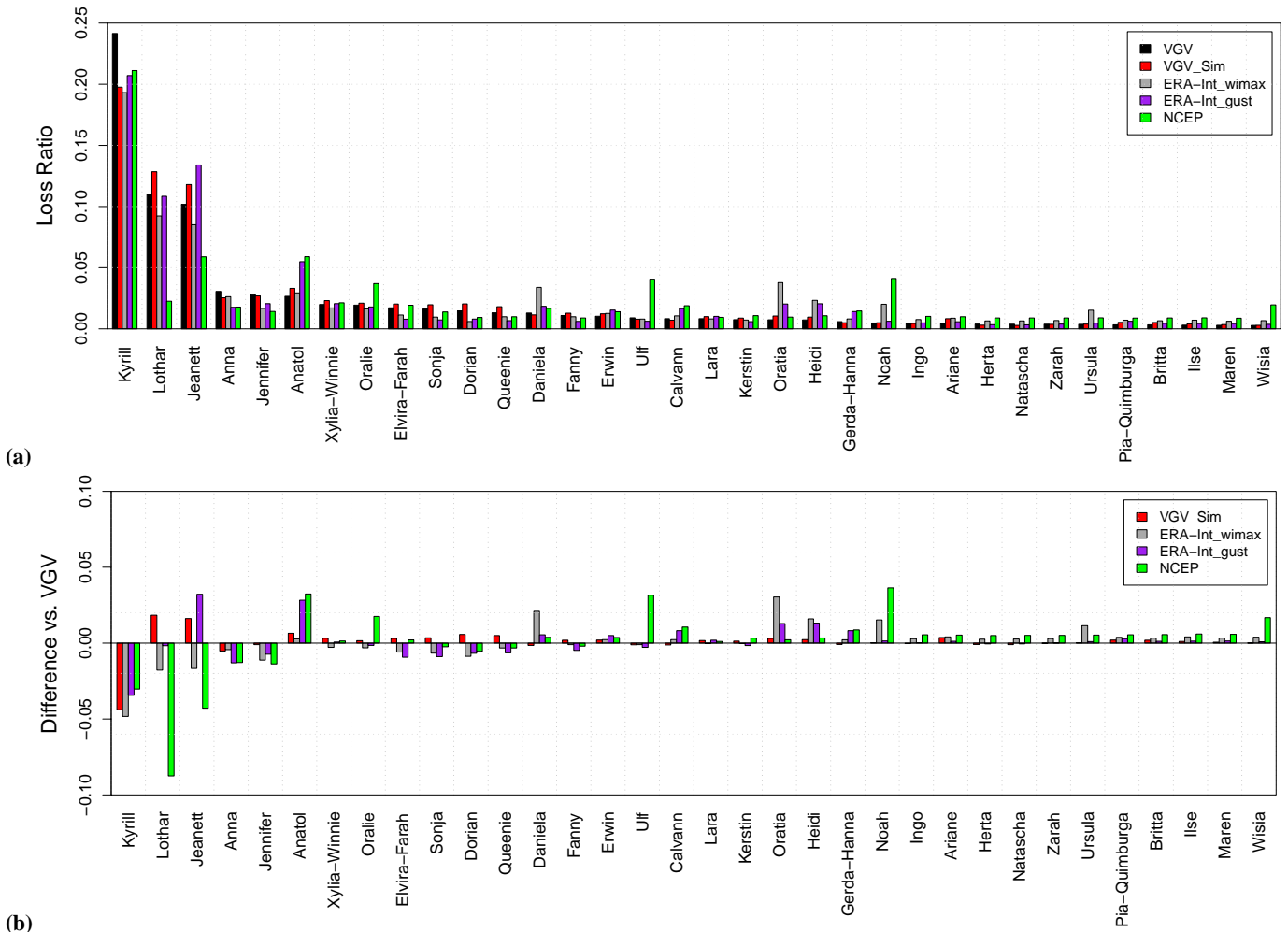


Fig. 5. Germany-wide cumulated losses for the 34 major loss events in the period 1997–2007 used for calibration of the loss model (unit: ‰). (a) For each event, the loss ratio is displayed on the basis of insurance losses to residential buildings (VGV, black bar), derived from vehicle insurance data (VGV_Sim, red bar), and calculated from the different reanalysis wind data: ERA-Interim maximum wind speed (grey), ERA-Interim maximum gust (purple), and NCEP maximum wind speeds (green). The losses for ERA-Interim and NCEP are calculated based on linear regressions derived from the other 33 events, excluding this particular storm. (b) Difference of calculated storm losses relative to the VGV loss sums.

In general, the results confirm the ability of the loss model to realistically calculate both country-wide cumulated losses and also the spatial distribution of losses for severe storm events in Germany. However, the quality of the loss estimates depends on the meteorological input data. The results are particularly satisfactory for losses calculated from the ERA-Interim reanalysis, which is produced on a high spatial resolution of approximately $0.7^\circ \times 0.7^\circ$. Reasonable results are obtained for the NCEP reanalysis although it fails to represent one of the most destructive storm events (owing to its coarse model resolution).

4 Estimation of return periods of loss-intensive wind storm events

Extreme value analysis is applied to the loss data to determine the statistical characteristics of severe storm losses and to calculate statistical properties often used in insurance applications, e.g., the return periods of the storm events. Fitting the GPD to the VGV loss data involves large statistical uncertainties due to the small sample size. To permit a more accurate estimation of the extreme value statistics of storm losses, the loss dataset has been expanded to include times when storm losses to residential buildings were not yet recorded systematically. This is done on the basis of both VGV_Sim insurance records (Table 2) and reanalysis wind

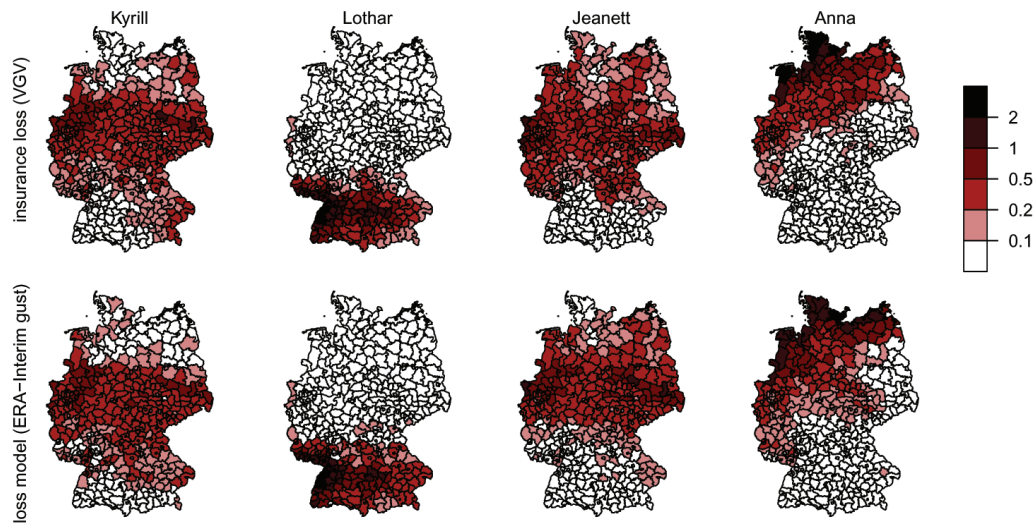


Fig. 6. Spatial distribution of losses for the four most loss-intensive single events in the period 1997 to 2007: insurance data (top row) and calculated losses by applying the loss model to ERA-Interim *gust* (bottom row). For each event the local losses were calculated using the linear regression derived from the other 33 events, leaving out the particular storm itself. For each administrative district the loss ratio is shown relative to the country-wide cumulated loss for the specific event (unit: %).

data, and provides loss information back to 1948 when applying the refined loss model to NCEP reanalysis (Table 3). The loss events are identified based on five day running sums of daily loss data (see Sect. 2.3).

Extraordinarily severe loss events occurred in early 1990, for example, storms “Daria”, “Vivian” and “Wiebke”, and also in earlier decades in the second half of the 20th century. The most loss-intensive events in Germany during the recent 60 years identified here occurred in Jan 1976 (“Capella”), Nov 1972 (cyclone “Quimburga”, the “Lower Saxony Gale”, see Cappel and Emmerich, 1975) and Feb 1962 (a severe storm, causing a storm surge and leading to severe flooding in the city of Hamburg). Note that different reanalyses consistently suggest upward trends in the occurrence of winter storms in Central Europe for the second half of the 20th century, and also since the late 19th century (Donat et al., 2011b).

A considerable socio-economic uncertainty, related to different spatial distributions of insured values, is apparent from the loss calculations based on NCEP. This effect is particularly strong for losses in earlier years. Cumulated losses for Germany were calculated using the spatial distribution of insured values (available for the years 1981 to 2007) of the specific year (Table 3, column 5), or using the most recent available value distribution (year 2007, column 6 in Table 3). The distribution of insured values is used for weighting the local losses when calculating cumulated losses for Germany. For years prior to approximately 2000, however, these data are affected by a number of uncertainties related to lower insurance density or less detailed reporting of losses. The distribution of values may, therefore, not be representative

for the earlier insurance data. For the eastern parts of Germany – the area of the former German Democratic Republic – insurance data are only available for years after 1990, and hence local losses are not accounted for when calculating cumulated losses for Germany. Furthermore, even for the other regions, information on insured values is only available back to 1981, and the value distribution of this year is, thus, also used when calculating cumulated losses in earlier years. Owing to the wide range of difficulties with the early insurance portfolio data, we decided to consider the cumulated losses using the most recent value distribution of the year 2007 for the extreme value analysis in this section. This means that the insured values in the *Landkreise* remained constant for the NCEP-based return period estimation, which potentially distorts the cumulated losses in their historical context. These loss estimates indicate the losses that the historical storms would cause if they occurred under today’s socio-economic conditions rather than the losses in their historical context, and describe a possibility to normalise the losses to a homogeneous portfolio. Also note the partly large differences between the NCEP and ERA-Interim based loss estimates for some individual events. These disparities reflect the differences in the realisations of these storms in the different reanalysis models and may partly also be related to the relatively coarse resolution of the NCEP model. On average, losses calculated from ERA-Interim showed a better agreement with insurance records for the period 1997–2007 compared to losses calculated from NCEP (see Sect. 3.2).

The extreme value analysis results in a return level plot combining the GPD fits for the different loss datasets (Fig. 7). Although the sample sizes differ considerably and,

Table 2. The 30 most loss-intensive winter storm events identified from VGV_Sim insurance records 1984–2008 and the associated 5-day periods. The names of the associated cyclones are indicated, start and end date of the five-day periods, and Germany-wide loss ratio sum for this period. Note that before 1990 cyclones were mostly denoted only by capital letters.

#	Name	Start Date	End Date	Loss Ratio [%]
1	Vivian-Wiebke	19900225	19900301	0.230
2	Kyrill	20070117	20070121	0.199
3	Daria	19900124	19900128	0.178
4	Lothar	19991223	19991227	0.123
5	Jeanett	20021025	20021029	0.118
6	Herta-Judith	19900203	19900207	0.072
7	Storm “Y”	19841122	19841126	0.066
8	Emma	20080299	20080303	0.040
9	Lore	19940125	19940129	0.039
10	storm “D”	19861019	19861023	0.038
11	Ismene	19921124	19921128	0.037
12	Verena	19930111	19930115	0.037
13	Coranna	19921109	19921113	0.035
14	Anatol	19991131	19991204	0.035
15	Quena	19931207	19931211	0.029
16	Wilma	19950122	19950126	0.029
17	Jennifer	20020125	20020129	0.027
18	Anna	20020223	20020227	0.026
19	Sonja	19970326	19970330	0.024
20	Elvira-Farah	19980303	19980307	0.022
21	Xylia	19981025	19981029	0.022
22	Oralie	20040319	20040323	0.021
23	storms “U”, “V”	19840113	19840117	0.020
24	Dorian	20051215	20051219	0.020
25	Daniela	19970217	19970221	0.019
26	storms “U”, “V”	19861215	19861219	0.018
27	Hetty	19980103	19980107	0.014
28	Erwin	20050106	20050110	0.013
29	Queenie	20040129	20040202	0.012
30	Ottilie-Pollie	19900211	19900215	0.012

in particular, the VGV insurance data are rather sparse with respect to a sound estimation of return periods, the curves for the different loss datasets agree remarkably well. The return levels are highest (lowest) for the insurance-data-based fits for VGV_Sim (VGV), flanking the curves for losses calculated from the two reanalysis datasets. The confidence intervals are narrowest for fits based on the long loss dataset calculated from NCEP reanalysis from 1948 to 2009. The good agreement between the different datasets suggests a high level of robustness of the return period estimates presented here.

The extreme value analysis of the different loss datasets reveals that the return period of storm “Kyrill” (the most severe event in the VGV data 1997–2007, Germany-wide accumulated loss ratio approximately 0.24 ‰) is 15 years (based

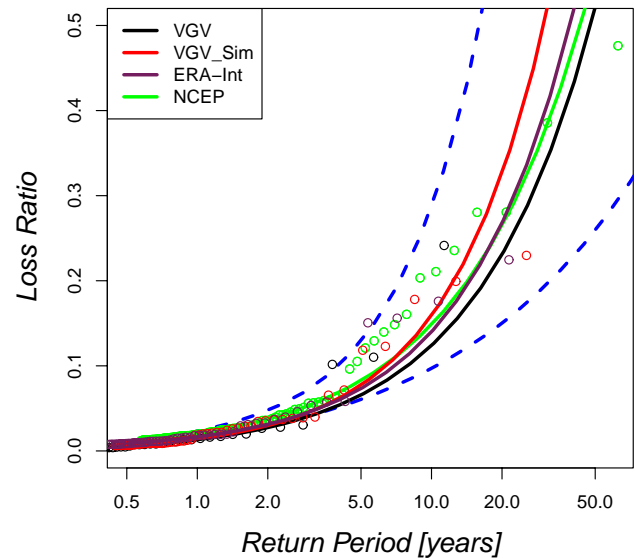


Fig. 7. Return period (unit: years) vs. return level (loss ratio, unit: ‰) plot for loss ratios based on the different loss datasets: VGV (black), VGV_Sim (red), losses calculated based on ERA-Interim gust (purple) and NCEP (green). Points indicate the empirical distribution, the solid lines the GPD best fits, the blue dashed lines the 95 % confidence interval (Profile Log-Likelihood Method) for the fit based on NCEP losses.

on the GPD fit for the VGV_Sim data), 17 to 18 years (for losses calculated from both ERA-Interim and NCEP), and 21 years (VGV). The statistical uncertainty, expressed by the 95 % confidence interval (Profile Log-Likelihood Method recommended by Coles, 2001) related to the GPD-fit of the NCEP-based storm losses between 1948 and 2009, ranges between 9 and 43 years. The estimated return periods of the most loss-intensive storms since 1948 – ‘Capella’ in 1976 (loss ratio calculated from NCEP using the most recent distribution of values: 0.476 ‰) and ‘Quimburga’ in 1972 (NCEP loss ratio: 0.386 ‰) – range between 29 and 45 years in the different datasets (95 % confidence interval between 15 and 145 years) for the first and 24 to 35 (95 % confidence interval between 13 and 100 years) years for the second. Conversely, the expected Germany-wide loss ratio for a 10-year event ranges between 0.12 ‰ and 0.16 ‰ based on the fits for the different loss datasets (95 % statistical confidence between 0.10 ‰ and 0.29 ‰), and for a 25-year loss event between 0.28 ‰ and 0.41 ‰ (95 % confidence between 0.17 ‰ and 0.85 ‰). For losses related to a 50-year storm event, the different fits already display a considerable spread, the expected loss ratios range between 0.52 ‰ (VGV) and 0.85 ‰ (VGV_Sim), and the statistical uncertainty ranges from 0.26 ‰ to 1.93 ‰.

The shape parameter ξ is between approximately 0.8 and 1.0 for the different fits, indicating an unbounded distribution. In other words, this implies that, in theory, infinitely high losses may occur when using this statistical model.

Table 3. Same as Table 2, but for storm events identified by applying the loss model to NCEP reanalysis (1948–2009). For those storms occurring since 1989, the respective loss calculated based on ERA-Interim (gust) is also shown. Loss ratios were calculated using the distribution of values for the specific year (column “Loss Ratio V_year”, see explanations in the text) and the most recent value distribution (i.e., 2007, column “Loss Ratio V_2007”).

#	Name	Start Date	End Date	NCEP	NCEP	ERA-Interim
				Loss Ratio V_year [%o]	Loss Ratio V_2007 [%o]	(gust) Loss Ratio V_2007 [%o]
1	Capella	19760101	19760105	0.729	0.476	
2	Quimburga	19721111	19721115	0.697	0.386	
3	storm “C”	19831124	19831128	0.029	0.281	
4	storm “Y”	19841121	19841125	0.140	0.280	
5	storm “V”	19620215	19620219	0.336	0.236	
6	Vivian-Wiebke	19900225	19900301	0.301	0.211	0.176
7	Kyrill	20070116	20070120	0.203	0.203	0.225
8	storm “K”	19830129	19830202	0.272	0.161	
9	storm “V”	19840113	19840117	0.233	0.148	
10	storm “U”	19620209	19620213	0.171	0.140	
11	storm “T”	19671015	19671019	0.230	0.129	
12	storm “G”	19560119	19560123	0.204	0.121	
13	storm “M”	19680113	19680117	0.162	0.105	
14	Daria	19900124	19900128	0.120	0.096	0.156
15	storm “X”	19670221	19670225	0.070	0.066	
16	storms “G”, “H”	19651206	19651210	0.070	0.064	
17	Quena	19931207	19931211	0.055	0.060	0.031
18	Jeanett	20021026	20021030	0.059	0.059	0.151
19	storm “S”	19861019	19861023	0.024	0.057	
20	Lydia	19891213	19891217	0.016	0.056	0.007
21	Verena	19930110	19930114	0.049	0.056	0.037
22	Anatol	19991130	19991204	0.054	0.051	0.040
23	storm “S”	19571206	19571210	0.069	0.049	
24	Coranna	19921110	19921114	0.050	0.049	0.019
25	Ulf	20050210	20050214	0.046	0.046	0.009
26	Herta-Judith	19900203	19900207	0.062	0.044	0.033
27	Noah	20011225	20011229	0.043	0.042	0.009
28	storm “Y”	19541221	19541225	0.065	0.040	
29	Lore	19940124	19940128	0.036	0.038	0.033
30	Undine	19910105	19910109	0.039	0.036	0.008

This scenario is, however, unrealistic because even when assuming total destruction of all buildings in the area considered, the total sum of values is finite. In the case of total destruction, a loss ratio equal to 1 would be expected. Note that the cumulated losses for the most destructive storm events in the past decades are in a co-domain of below approximately 0.5 ‰, i.e., only a small fraction of the total insured values. For losses in this dimension, the GPD fits for the different datasets display reasonable and stable results, thus, giving a certain amount of confidence in the return period estimation presented above.

5 Summary, discussion and conclusions

We present an approach for the estimation of winter storm losses in a high spatial resolution and for individual storm events. The availability of detailed insurance loss records to residential buildings in Germany permits specific local loss characteristics in different regions to be accounted for when calibrating the local loss functions. The refined loss model produces loss estimates in a high spatial resolution and in good agreement with insurance loss records; it also allows reliable cumulated loss amounts to be calculated. For the assessment of the risk of severe storm events, the loss data catalogue is extended by making use of further insurance data (motor vehicle own damage insurance) and by applying the loss model to reanalysis data back to 1948. The statistical characteristics of high storm losses are estimated

by means of extreme value analysis. A GPD is fitted to the losses for the severe storm events to estimate return periods of loss-intensive storms under current climate conditions. As a result, for example, the return period of losses caused by the storm “Kyrill” in 2007 is found to be about 15 to 21 years, depending on the individual dataset considered. “Capella”, the most loss-intensive storm considered here, is assumed to have a return period of 29 to 45 years.

Previous studies used a rather general approach for the calculation of losses (Klawa and Ulbrich, 2003; Leckebusch et al., 2007; Pinto et al., 2007; Donat et al., 2010a, 2011a), in particular a nationwide regression between wind speed and losses. This study also confirms the local applicability of the relatively simple basic assumptions on which the loss model is based: occurrence of losses for wind speeds exceeding the local 98th percentile and a cubic relationship between wind and loss. The latter is also reasonable in physical terms, as the cube of wind speed is proportional to the wind power. In addition, this study shows a specific benefit accruing from the inclusion of regionally specific loss characteristics. The main advantage of the loss model approach presented here is that it considers regional losses for single storm events, thus permitting improved estimates also of cumulated losses.

Nevertheless, the loss calculations may potentially be affected by several sources of uncertainty. First, socio-economic effects may influence the results. It was shown that assuming different spatial distributions of insured values leads to considerably different cumulated losses, particularly for pre-1991 storms (before 1991 information on insured values is only available for the western parts of Germany). Moreover, socio-economic effects regarding the amplification of losses in terms of increasing costs after large events are not accounted for in this study. Second, the meteorological data used to calculate losses contain uncertainties and partly do not even capture specific events. Although this may lead to substantial differences when calculating the losses for individual storms, the extreme value analysis results are very similar for the different loss datasets, suggesting a reasonable degree of robustness of the return period estimations presented here. Third, though they are subject to intensive quality control and provide a plausible picture of the losses, the insurance data may contain some imprecision. Different insurance companies (with generally different regional foci) often process the loss data differently, and the homogeneity of the loss records may be impaired by changes in insurance density or insured values or by fusions of companies, for example. Nevertheless, the GDV loss data are the best available loss dataset for the purpose of this study, and are used here as the reference data with respect to storm losses. At least since the turn of the millennium, the GDV data comprise more than 90 % of the German residential insurance market, so specific effects with individual insurers should counterbalance each other in the large sample. Fourth, there is also considerable statistical uncertainty obvious from the relatively wide confidence intervals of the GPD fit estimates, in particular for

long return periods above approximately 25 years. Reducing this uncertainty requires larger samples of storm loss data by including longer datasets of wind speed, for example, or by using ensemble simulations (Della-Marta et al., 2010; Donat et al., 2010b).

On the basis of extreme wind indices, Della-Marta et al. (2009) estimated the return periods of prominent wind storms from a Europe-wide perspective and found a large spread of the results, depending on the specific wind parameter considered. The results in this study are restricted to loss amounts in Germany, but for most events the derived return periods are in a comparable order of magnitude.

Although our results suggest that infinitely high losses may occur, this is not realistic, as at least the existing values limit the loss. The loss ratios for the most destructive historical events are, however, only a small fraction of the total values, generally below 0.5 %. Our estimations are valid for losses in this order of magnitude, and the good agreement between the analyses based on the different datasets suggests a high confidence in the results.

The loss model was applied to reanalysis data in this study, but it can also be used to calculate storm losses based on climate model simulations. This should potentially complement previous studies estimating changes of loss under human-induced climate change conditions making use of a more general loss calculation approach. Explicitly accounting for regional loss characteristics will allow more accurate estimates of possible future developments. Making use of high-resolution wind fields as simulated by regional climate models may further improve the skill of the loss estimations (Donat et al., 2010a).

Acknowledgements. This study was supported by the Gesamtverband der Deutschen Versicherungswirtschaft (GDV). We thank the European Centre for Medium-Range Weather Forecasts (ECMWF) and Deutscher Wetterdienst (DWD) for making ERA-Interim reanalysis data available. NCEP Reanalysis data were obtained from the NOAA/OAR/ESRL PSD, Boulder, Colorado, USA, from their web site at <http://www.esrl.noaa.gov/psd/>. We would like to thank Mareike Schuster for verifying the identified storm events in comparison to historical weather maps and we are grateful for the helpful comments provided by the two reviewers.

Edited by: O. Katz

Reviewed by: C. Etienne and another anonymous referee

References

- Berliner Wetterkarte: published by Verein Berliner Wetterkarte e.V., ISSN 0177–3984, <http://www.berlinerwetterkarte.de>, 2009.
- Brodin, E. and Rootzen, H.: Univariate and bivariate GPD methods for predicting extreme wind storm losses, *Insur Math Econ*, 44, 345–356, ISSN 0167-6687, doi:10.1016/j.insmatheco.2008.11.002, 2009.
- Cappel, A. and Emmerich, P.: Zwei Wetterkatastrophen des Jahres 1972: Der Niedersachsen-Orkan und das Gewitterunwetter von

- Stuttgart, Reports of the German weather service, 135, Offenbach, Germany, 1975.
- Coles, S. G.: An Introduction to Statistical Modeling of Extreme Values, London, UK, Springer-Verlag, 224 pp., 2001.
- Dee, D. P., Uppala, S. M., Simmons, A. J., Berrisford, P., Poli, P., Kobayashi, S., Andrae, U., Balmaseda, M. A., Balsamo, G., Bauer, P., Bechtold, P., Beljaars, A. C. M., van de Berg, L., Bidlot, J., Bormann, N., Delsol, C., Dragani, R., Fuentes, M., Geer, A. J., Haimberger, L., Healy, S. B., Hersbach, H., Hólm, E. V., Isaksen, I., Kållberg, P., Köhler, M., Matricardi, M., McNally, A. P., Monge-Sanz, B. M., Morcrette, J.-J., Park, B.-K., Peubey, C., de Rosnay, P., Tavolato, C., Thépaut, J.-N. and Vitart, F.: The ERA-Interim reanalysis: configuration and performance of the data assimilation system, *Q. J. Roy. Meteor. Soc.*, 137, 553–597, doi:10.1002/qj.828, 2011.
- Della-Marta, P. M., Mathis, H., Frei, C., Liniger, M. A., Kleinn, J., and Appenzeller, C.: The return period of wind storms over Europe, *Int. J. Climatol.*, 29, 437–459, doi:10.1002/joc.1794, 2009.
- Della-Marta, P. M., Liniger, M. A., Appenzeller, C., Bresch, D. N., Koellner-Heck, P., and Muccione, V.: Improved estimates of the European winter wind storm climate and the risk of reinsurance loss using climate model data, *J. Appl. Meteor. Climatol.*, 49, 2092–2120, doi:10.1175/2010JAMC2133.1, 2010.
- Donat, M. G., Leckebusch, G. C., Wild, S., and Ulbrich, U.: Benefits and limitations of regional multi-model ensembles for storm loss estimations, *Clim Res.*, 44, 211–225, doi:10.3354/cr00891, 2010a.
- Donat, M. G., Leckebusch, G. C., Pinto, J. G., Ulbrich, U.: European storminess and associated circulation weather types: future changes deduced from a multi-model ensemble of GCM simulations, *Clim Res.*, 42, 27–43, doi:10.3354/cr00853, 2010b.
- Donat, M. G., Leckebusch, G. C., Wild, S., and Ulbrich, U.: Future changes in European winter storm losses and extreme wind speeds inferred from GCM and RCM multi-model simulations, *Nat. Hazards Earth Syst. Sci.*, 11, 1351–1370, doi:10.5194/nhess-11-1351-2011, 2011a.
- Donat, M. G., Renggli, D., Wild, S., Alexander, L. V., Leckebusch, G. C., and Ulbrich, U.: Reanalysis suggests long-term upward trends in European storminess since 1871, *Geophys. Res. Lett.*, 38, L14703, doi:10.1029/2011GL047995, 2011b.
- Dorland, C., Tol, R. S. J., and Palutikof, J.: Vulnerability of the Netherlands and northwest Europe to storm damage under climate change, *Clim. Change*, 43, 513–535, 1999.
- ECMWF: IFS Documentation CY31r1, Part IV: Physical Processes, <http://www.ecmwf.int/research/ifsdocs/CY31r1>, 2007.
- Fink, A. H., Brücher, T., Ermert, V., Krüger, A., and Pinto, J. G.: The European storm Kyrill in January 2007: synoptic evolution, meteorological impacts and some considerations with respect to climate change, *Nat. Hazards Earth Syst. Sci.*, 9, 405–423, doi:10.5194/nhess-9-405-2009, 2009.
- GDV: Yearbook 2006 – The German Insurance Industry, published by: Gesamtverband der Deutschen Versicherungswirtschaft e.V. (German Insurance Association), www.gdv.de, 2006.
- GDV: Yearbook 2009 – The German Insurance Industry, published by: Gesamtverband der Deutschen Versicherungswirtschaft e.V. (German Insurance Association), www.gdv.de, 2009.
- Heneka, P. and Hofherr, T.: Probabilistic winter storm risk assessment for residential buildings in Germany, *Nat. Hazards*, 56, 815–831, doi:10.1007/s11069-010-9593-7, 2011.
- Heneka, P., Hofherr, T., Ruck, B., and Kottmeier, C.: Winter storm risk of residential structures – model development and application to the German state of Baden-Württemberg, *Nat. Hazards Earth Syst. Sci.*, 6, 721–733, doi:10.5194/nhess-6-721-2006, 2006.
- Hofherr, T. and Kunz, M.: Extreme wind climatology of winter storms in Germany, *Clim. Res.* 41, 105–123, 2010.
- Kalnay, E., Kanamitsu, M., Kistler, R., Collins, W., Deaven, D., Gandin, L., Iredell, M., Saha, S., White, G., Woollen, J., Zhu, Y., Leetmaa, A., and Reynolds, R.: The NCEP/NCAR 40-year reanalysis project, *Bull. Amer. Meteor. Soc.*, 77, 437–470, 1996.
- Kiss, P., Varga, L., and Jainosi, I. M.: Comparison of wind power estimates from the ECMWF reanalyses with direct turbine measurements, *J. Renewable Sustainable Energy*, 1, 033105, doi:10.1063/1.3153903, 2009.
- Klawa, M. and Ulbrich, U.: A model for the estimation of storm losses and the identification of severe winter storms in Germany, *Nat. Hazards Earth Syst. Sci.*, 3, 725–732, doi:10.5194/nhess-3-725-2003, 2003.
- Kunz, M., Mohr, S., Rauthe, M., Lux, R., and Kottmeier, Ch.: Assessment of extreme wind speeds from Regional Climate Models – Part 1: Estimation of return values and their evaluation, *Nat. Hazards Earth Syst. Sci.*, 10, 907–922, doi:10.5194/nhess-10-907-2010, 2010.
- Leckebusch, G. C., Ulbrich, U., Fröhlich, L., and Pinto, J. G.: Property loss potentials for European midlatitude storms in a changing climate, *Geophys. Res. Lett.*, 34, L05703, doi:10.1029/2006GL027663, 2007.
- Olsen, A. H. and Porter, K. A.: What We Know about Demand Surge: a Brief Summary, *Nat. Hazards Review*, 12, 62–71, 2011.
- Palutikof, J. P. and Skellern, A. R.: Storm severity over Britain, a report to Commercial Union General Insurance. Climatic Research Unit, School of Environmental Sciences, University of East Anglia, Norwich, 1991.
- Pielke Jr., R. A., Gratz, J., Landsea, C. W., Collins, D., Saunders, M., and Musulin, R.: Normalized Hurricane Damages in the United States: 1900–2005, *Nat. Hazards Review*, 9, 29–42, 2008.
- Pinto, J. G., Fröhlich, E. L., Leckebusch, G. C., and Ulbrich, U.: Changing European storm loss potentials under modified climate conditions according to ensemble simulations of the ECHAM5/MPI-OM1 GCM, *Nat. Hazards Earth Syst. Sci.*, 7, 165–175, doi:10.5194/nhess-7-165-2007, 2007.
- Potsdamer Wetterkarte: Deutscher Zentralverlag GmbH, Berlin O 17, Verlagslizenz Nr. 363 – Gen.-Nr. 1006/48 – 32/48 (I) Paul Dünnhaupt, Köthen L, 77, 1949.
- Shravan Kumar, M. and Anandan, V. K.: Comparison of the NCEP/NCAR Reanalysis II winds with those observed over a complex terrain in lower atmospheric boundary layer, *Geophys. Res. Lett.*, 36, L01805, doi:10.1029/2008GL036246, 2009.
- Schwierz, C., Köllner-Heck, P., Zenklusen Mutter, E., Bresch, D., Vidale, P. L., Wild, M., and Schär, C.: Modelling European winter wind storm losses in current and future climate, *Clim. Change*, 101, doi:10.1007/s10584-009-9712-1, 2010.
- Ulbrich, U., Fink, A., Klawa, M., and Pinto, J. G.: Three extreme storms over Europe in December 1999, *Weather* 56, 70–80, 2001.