

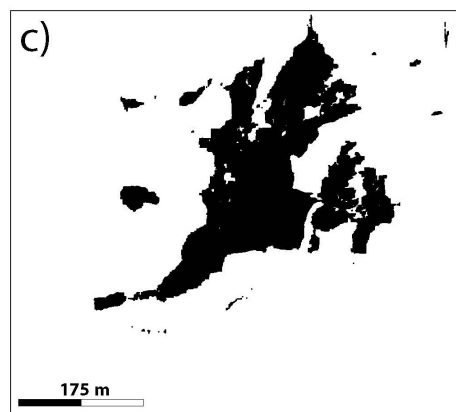
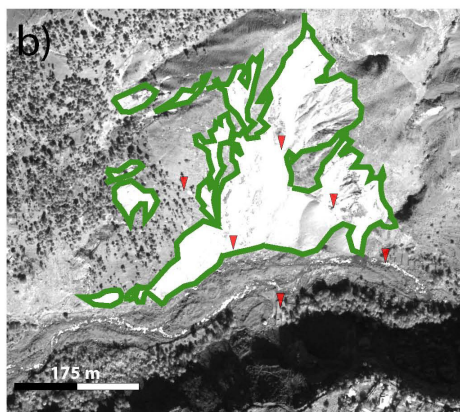
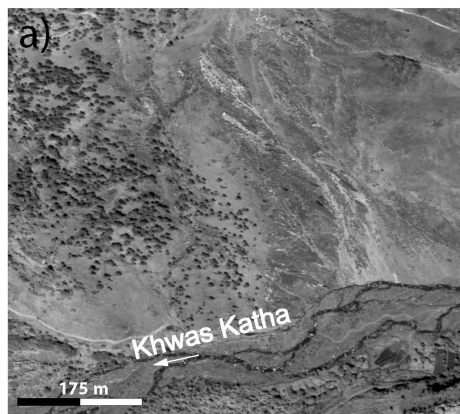
*Corrigendum to*

**“Co-seismic surface effects from very high resolution panchromatic images: the case of the 2005 Kashmir (Pakistan) earthquake”  
published in Nat. Hazards Earth Syst. Sci., 11, 931–943, 2011**

M. Chini, F. R. Cinti, and S. Stramondo

Istituto Nazionale di Geofisica e Vulcanologia, Rome, Italy

In the above article Fig. 8 on page 941 displayed incorrect information. The corrected Fig. 8 is shown below, together with the original caption.



**Fig. 8.** (a) Pre-event image (11 August 2005) of an area on the south-eastern slope of Balakot (Khwaskatha). (b) Post-event image (19 October 2005) of the same area where a large landslide area is contoured by a green line as detected by visual inspection. Red triangles point to a possible deformed area. (c) Landslide (black area) occurring in the area detected by the automatic classification.



Correspondence to: S. Stramondo  
(salvatore.stramondo@ingv.it)