



# The impact of forest regeneration on streamflow in 12 mesoscale humid tropical catchments

H. E. Beck<sup>1</sup>, L. A. Bruijnzeel<sup>1</sup>, A. I. J. M. van Dijk<sup>2,3</sup>, T. R. McVicar<sup>2</sup>, F. N. Scatena<sup>4,\*</sup>, and J. Schellekens<sup>5</sup>

<sup>1</sup>Critical Zone Hydrology Group, Faculty of Earth and Life Sciences, VU University Amsterdam, De Boelelaan 1085, 1081 HV Amsterdam, the Netherlands

<sup>2</sup>CSIRO Land and Water, G.P.O. Box 1666, Canberra, ACT 2601, Australia

<sup>3</sup>Fenner School of Environment and Society, The Australian National University, Canberra, ACT 2601, Australia

<sup>4</sup>Department of Earth and Environmental Science, University of Pennsylvania, Philadelphia, PA 19104-6316, USA

<sup>5</sup>Inland Water Systems Unit, Deltares, P.O. Box 177, Rotterdamseweg 1 85, 2600 MH Delft, the Netherlands

\*deceased

Correspondence to: H. E. Beck (h.e.beck@vu.nl)

Received: 19 February 2013 – Published in Hydrol. Earth Syst. Sci. Discuss.: 11 March 2013

Revised: 24 May 2013 – Accepted: 29 May 2013 – Published: 9 July 2013

**Abstract.** Although regenerating forests make up an increasingly large portion of humid tropical landscapes, little is known of their water use and effects on streamflow ( $Q$ ). Since the 1950s the island of Puerto Rico has experienced widespread abandonment of pastures and agricultural lands, followed by forest regeneration. This paper examines the possible impacts of these secondary forests on several  $Q$  characteristics for 12 mesoscale catchments (23–346 km<sup>2</sup>; mean precipitation 1720–3422 mm yr<sup>-1</sup>) with long (33–51 yr) and simultaneous records for  $Q$ , precipitation ( $P$ ), potential evaporation (PET), and land cover. A simple spatially-lumped, conceptual rainfall–runoff model that uses daily  $P$  and PET time series as inputs (HBV-light) was used to simulate  $Q$  for each catchment. Annual time series of observed and simulated values of four  $Q$  characteristics were calculated. A least-squares trend was fitted through annual time series of the residual difference between observed and simulated time series of each  $Q$  characteristic. From this the total cumulative change ( $\hat{A}$ ) was calculated, representing the change in each  $Q$  characteristic after controlling for climate variability and water storage carry-over effects between years. Negative values of  $\hat{A}$  were found for most catchments and  $Q$  characteristics, suggesting enhanced actual evaporation overall following forest regeneration. However, correlations between changes in urban or forest area and values of  $\hat{A}$  were insignificant ( $p \geq 0.389$ ) for all  $Q$  characteristics. This suggests there is no convincing evidence that changes

in the chosen  $Q$  characteristics in these Puerto Rican catchments can be ascribed to changes in urban or forest area. The present results are in line with previous studies of meso- and macro-scale (sub-)tropical catchments, which generally found no significant change in  $Q$  that can be attributed to changes in forest cover. Possible explanations for the lack of a clear signal may include errors in the land cover, climate,  $Q$ , and/or catchment boundary data; changes in forest area occurring mainly in the less rainy lowlands; and heterogeneity in catchment response. Different results were obtained for different catchments, and using a smaller subset of catchments could have led to very different conclusions. This highlights the importance of including multiple catchments in land-cover impact analysis at the mesoscale.

## 1 Introduction

Tropical regions have experienced extensive changes in land use and land cover during the last few decades (Lepers et al., 2005). Continuously rising demands for crop land and timber have led to substantial deforestation in many regions (Drigo, 2005), and although the global tropical deforestation rate remains high at 13 Mha yr<sup>-1</sup> (FAO, 2006), forest regrowth on abandoned agricultural land is increasing, particularly in Latin America (Aide and Grau, 2004; Hecht, 2010) and South East Asia (cf. Fox et al., 2000; Xu et al.,

1999). Because these “secondary forests” account for approximately one-third of the total tropical forest area (Brown and Lugo, 1990; Hölscher et al., 2005), understanding the impact of forest regrowth on water yield is important for water resources management and planning purposes (Giambelluca, 2002; Bruijnzeel, 2004), and the development of viable “payments for ecosystem services” schemes (Landell-Mills and Porras, 2002; Lele, 2009). However, despite this recognized importance, little is known of the water use of secondary tropical forests, although there are indications of enhanced water use during the period of most active biomass accumulation (Giambelluca, 2002; Juhrebandt et al., 2004; Hölscher et al., 2005).

The relationship between forest cover and streamflow ( $Q$ ) is subject to a long-standing and ongoing discussion (Andréassian, 2004), also in the tropics (Bruijnzeel, 2004; Calder, 2005). The influence of forest cover change on flooding is particularly contentious (e.g. FAO, 2005; Bradshaw et al., 2007; Van Dijk et al., 2009) whereas the effect of forestation on tropical dry-season flows is also under debate (Calder, 2005; Scott et al., 2005). The general contention is that the *net* effect of an increase in forest cover on dry-season flow depends on the “trade-off” between *increases* in  $Q$  due to enhanced soil water recharge on the one hand (as forestation generally increases soil macro-porosity and infiltration characteristics; Ilstedt et al., 2007; Bonell et al., 2010; Zimmermann et al., 2006, 2010; Hassler et al., 2011), and *decreases* in soil water reserves and  $Q$  on the other hand due to the higher water use of trees compared to crops, pasture, or scrubs (Bruijnzeel, 1989, 2004; Jackson et al., 2005; Scott et al., 2005). Reviews of micro-scale ( $< 1 \text{ km}^2$ ) experimental catchment studies (e.g. Jackson et al., 2005; Brown et al., 2005) – mostly conducted outside the tropics and in non-degraded settings where soil infiltration characteristics are not likely to be improved substantially by forestation – suggest that the increase in vegetation water use is indeed more important, and thus an increase in forest cover commonly leads to a decrease in both total and dry-season  $Q$ . However, although direct experimental evidence of the “infiltration trade-off hypothesis” (Bruijnzeel, 1989; Bonell et al., 2010) is missing due to a lack of comprehensive studies, demonstrated reductions in amounts of headwater- or hillslope stormflow production after reforesting severely degraded land in various parts of the tropics (e.g. Chandler and Walter, 1998; Zhou et al., 2002; Zhang et al., 2004) should be large enough to overcome the associated increases in forest water use (Chandler, 2006; cf. Bruijnzeel, 2004; Scott et al., 2005; Zhou et al., 2010). Indeed, as long-term  $Q$  records for large, once degraded catchment areas are becoming available, evidence of improved baseflows ( $Q_{\text{bf}}$ ) following large-scale land rehabilitation is beginning to be documented (Wilcox and Huang, 2010; Zhou et al., 2010).

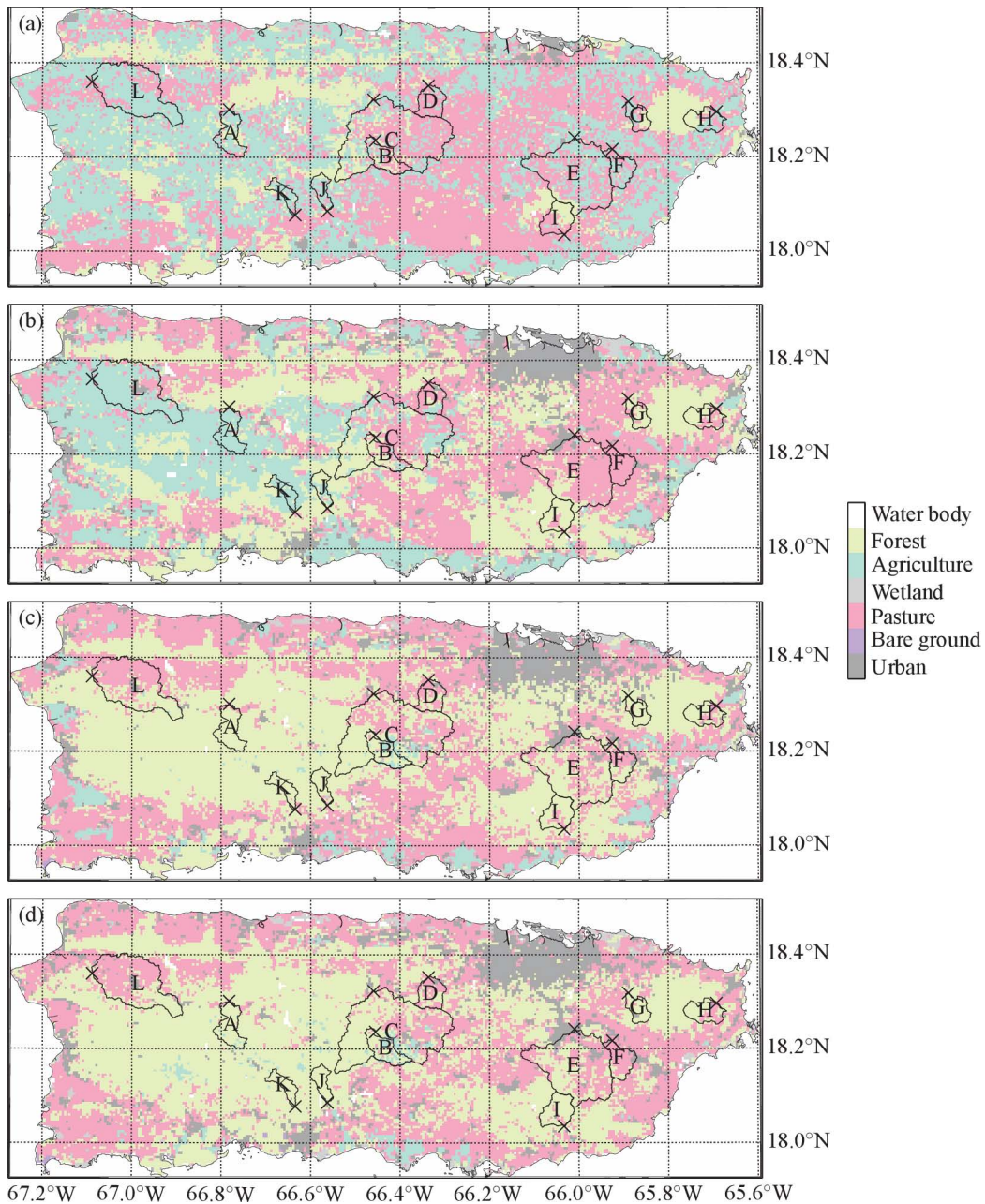
The tropical island of Puerto Rico provides a unique opportunity to study the impacts of natural forest regeneration on  $Q$  at the mesocatchment scale ( $1\text{--}10\,000 \text{ km}^2$ ), as high-

quality and long-term hydro-climatic records and sequential land-cover data are available. Since the 1950s, Puerto Rico has seen widespread secondary forest regrowth on abandoned pastures, agricultural land (mostly sugar cane), and coffee plantations (Thomlinson et al., 1996; Aide et al., 2000; cf. Del Mar López et al., 1998). Although previous work on the relationship between land-cover change and  $Q$  using lumped meso- and macro-scale catchment data has experienced some difficulty demonstrating unequivocal results (e.g. Van Dijk et al., 2012), possibly stronger conclusions may be obtained by selecting catchments within similar regions (in this case central Puerto Rico; cf. Peña-Arancibia et al., 2010). On the whole, one would expect marked drops in total  $Q$  and  $Q_{\text{bf}}$  during forest recovery in areas where the general extent of soil surface degradation before land abandonment was limited and soil structural characteristics (and thus infiltration opportunities) therefore remained relatively unaffected by forest regeneration (cf. Aide et al., 1996; Zou and Gonzalez, 1997). For catchments that experienced advanced soil degradation prior to agricultural abandonment, major declines in the volumes of both total  $Q$  and quickflow ( $Q_{\text{qf}}$ ) would be expected during forest regrowth due to much improved infiltration and retention capacities (cf. Chandler and Walter, 1998; Zhou et al., 2002). The direction and magnitude of the change in  $Q_{\text{bf}}$  will depend on the trade-off between the changes in vegetation water use and infiltration associated with forest regeneration (Bruijnzeel, 1989; Scott et al., 2005).

The following hypotheses are tested here: (1) there is a negative relationship between the area under regenerating forest and the change in total  $Q$  (i.e.  $Q_{\text{qf}} + Q_{\text{bf}}$ ); (2)  $Q_{\text{qf}}$  shows a negative relationship with area under regenerating forest and a positive one with area under urbanization; and (3) depending on the trade-off between the changes in vegetation water use and infiltration associated with forest regrowth,  $Q_{\text{bf}}$  shows either a negative, no, or a positive relationship with the area under regenerating forest. Specific objectives are to quantify the effects of forest regeneration and urbanization on total  $Q$ ,  $Q_{\text{qf}}$ , and  $Q_{\text{bf}}$ .

## 2 Study area

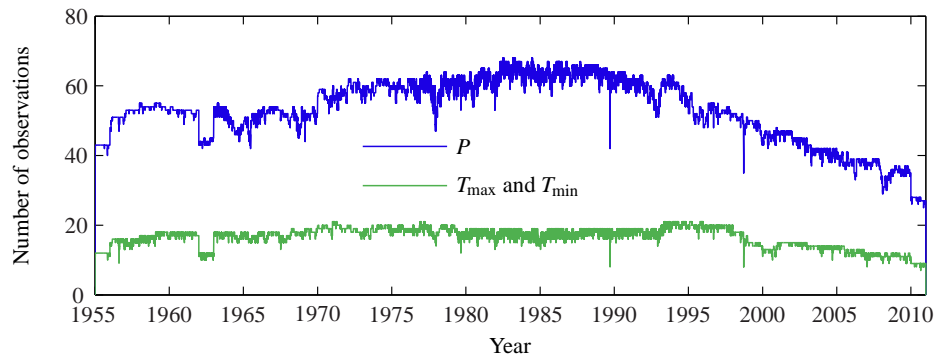
Puerto Rico is an island with a tropical maritime climate, located in the north-eastern Caribbean occupying  $\sim 8870 \text{ km}^2$ . The geology is dominated by the volcanic Cordillera Central, with a few major outcrops of plutonic rock (mostly granodiorite), and karstic limestones towards the far north and south (Olcott, 1999). Soils developed in the volcanic substrates are largely clayey Ultisols with a rapidly diminishing saturated hydraulic conductivity ( $K_s$ ) with depth (Schellekens et al., 2004) whereas the granodiorites produce less clayey Ultisols with a less pronounced  $K_s$  profile (Kurtz et al., 2011). Island-wide mean precipitation ( $P$ ) is  $\sim 1700 \text{ mm yr}^{-1}$  (Daly et al., 1994, 2003). There is a moderate  $P$  seasonality, with the



**Fig. 1.** Maps showing the locations of the study catchments in Puerto Rico with the generalized land-cover classifications for (a) 1951, (b) 1978, (c) 1991, and (d) 2000. Maps for 1951 and 1978 courtesy of E. H. Helmer and O. M. Ramos (USDA-IITF), respectively. Catchments identified by letters and stream gauges by crosses. All maps in this paper are presented in the Albers equal area conic projection with latitudinal limits 17.93–18.52° N and longitudinal limits 67.27–65.59° W.

three driest months of the year (January–March) receiving on average ~ 300 mm in total and the three wettest months of the year (September–November) receiving on average ~ 775 mm in total (Daly et al., 1994, 2003). The northern and eastern portions of the island receive ~ 30% more *P* due to the rising of the moisture-bearing trade winds against the slopes of the central mountain range (Calvesbert, 1970; García-Martínó et al., 1996; Daly et al., 2003).

During the second half of the 20th century, socio-economic changes in Puerto Rico led to migration from (upland) rural areas and to (lowland) urbanization (Dietz, 1986). The associated abandonment of pastures and agricultural fields allowed secondary forests to develop over increasingly large areas as time progressed (Thomlinson et al., 1996; Grau et al., 2003; Helmer, 2004; Parés-Ramos et al., 2008; Fig. 1). The dynamics of this forest recovery are well



**Fig. 2.** Graph showing the number of daily observations for  $P$ ,  $T_{\max}$ , and  $T_{\min}$ . Only stations with records  $> 20$  yr were used. The x-axis marks 1 January of each fifth year.

documented, both in terms of its expansion over time, and forest composition and structure (Aide et al., 1996, 2000; China and Helmer, 2003; Grau et al., 2003). Tree density typically reaches a peak between 25 and 35 yr after abandonment whereas species richness and forest structure resemble those of old-growth forest after ca. 40 yr of regeneration (Aide et al., 2000). Total actual evaporation ( $ET_a$ ) of mature upland forest in the maritime tropical climate of Puerto Rico is high compared to tropical continental sites (Schellekens et al., 2000), mostly because of enhanced wet-canopy evaporation rates (Holwerda et al., 2006, 2012), and the same may well apply to the island's secondary forests (cf. Giambelluca, 2002).

The locations of the 12 catchments examined here and the respective changes in land cover over the period 1951–2000 (see also Sect. 3.1) are shown in Fig. 1. The size of the catchments ranges from 23 to 346 km<sup>2</sup> (median size 42 km<sup>2</sup>), mean annual  $P$  varies between 1720 and 3422 mm yr<sup>-1</sup> (median value 2021 mm yr<sup>-1</sup>), and the length of simultaneous  $P$ , potential evaporation (PET), and  $Q$  records between 33 and 51 yr (median duration 44 yr; Table 1).

### 3 Data

#### 3.1 Land cover

Land-cover maps were obtained for 1951, 1978, 1991, and 2000 (Fig. 1). The maps for 1951 (Brockmann, 1952; Kennaway and Helmer, 2007) and 1978 (Ramos and Lugo, 1994) were derived from aerial photography. Although the maps for 1951 and 1978 were rasterized at a resolution of  $\sim 30$  and  $\sim 11$  m, respectively, the actual mapping resolution used by the photo interpreters is estimated at  $\sim 300$  and  $\sim 50$  m, respectively. The 1991 and 2000 maps<sup>1</sup> ( $\sim 30$  m resolution; Helmer and Ruefenacht, 2005) were derived from Landsat data using regression-tree modelling and histogram match-

ing. All land-cover maps were reprojected to a common 0.0001° ( $\sim 11$  m) geographical grid by nearest-neighbour interpolation. To accommodate the different classification schemes used in the respective mapping exercises, each land-cover class was assigned to a generalized class (Table 2). For each catchment the net changes in urban and forest areas from the start of the simultaneous  $P$ , PET, and  $Q$  records (Table 1) until 2000 were calculated by linear interpolation of urban- and forest-area time series.

#### 3.2 Streamflow

All available daily  $Q$  records were downloaded from the US Geological Survey (USGS) National Water Information System<sup>2</sup> in December 2012, resulting in an initial dataset of 111 gauging sites. Catchment areas were derived for each site using the PCRaster software (Wesseling et al., 1996) and the USGS National Elevation Dataset (NED) digital elevation model ( $\sim 30$ -m resolution). The following criteria for inclusion here were applied: (1) the USGS published estimate of catchment area deviated by  $< 10\%$  from our computed catchment area; (2) the length of the  $Q$  record between 1950 and 2005 was  $> 30$  yr; and (3) the catchment was not subject to flow regulation or affected by major anthropogenic water extraction. The latter was assessed using annual USGS Water-Data Reports<sup>3</sup> and a map of water supply intakes in the Luquillo Experimental Forest (Crook et al., 2007; an island-wide map of intakes is lacking). The final dataset comprised 12 catchments (Fig. 1 and Table 1). For the conversion of measured discharge [feet<sup>3</sup> s<sup>-1</sup>] to areal mean  $Q$  [mm d<sup>-1</sup>] the computed catchment area was used. The following four  $Q$  characteristics were calculated, on an annual basis, to study changes in  $Q$  through time: (1) the annual 95th percentile (percent time not-exceeded) daily  $Q$  ( $Q_{p95}$  [mm d<sup>-1</sup>]; indicative of peak flows); (2) the annual mean  $Q$  ( $Q_{\text{tot}}$  [mm yr<sup>-1</sup>]; indicative of total water yield); (3) the annual 5th percentile daily  $Q$  ( $Q_{p5}$  [mm d<sup>-1</sup>]; indicative of low

<sup>1</sup>Downloaded from <https://www.sas.upenn.edu/lczodata/> in June 2011.

<sup>2</sup>Accessible at <http://waterdata.usgs.gov/nwis>.

<sup>3</sup>Available at <http://wdr.water.usgs.gov/>.



**Table 1.** Background details and basic hydrological characterization of the catchments used in the present study. The catchments are identified by the letters A–L in the header.

	A: Tanama	B: Bauta	C: Grande de Manatí	D: Cibuco	E: Grande de Loiza	F: Valenciano	G: Canóvanas	H: Fajardo	I: Grande de Patillas	J: Inabón	K: Portugés	L: Culebrinas
	Catchment details											
USGS ID (last six digits)	028000	034000	035000	038320	055000	056400	061800	071000	092000	112500	115000	147800
Gauge latitude [° N]	18.301	18.236	18.323	18.352	18.242	18.217	18.318	18.296	18.035	18.086	18.078	18.360
Gauge longitude [° W]	66.782	66.455	66.459	66.336	66.010	65.925	65.889	65.692	66.034	66.562	66.634	67.089
Catchment area <sup>a</sup> [km <sup>2</sup> ]	47.1	43.5	345.9	39.8	233.0	41.5	26.5	39.3	46.3	24.5	22.9	177.1
Catchment mean elevation [m a.s.l.]	571	734	578	247	265	170	461	272	442	558	568	167
Catchment elongation ratio <sup>b</sup> [–]	0.66	0.57	0.69	0.84	0.73	0.72	0.71	0.69	0.76	0.61	0.52	0.62
Catchment mean slope [°]	16.2	21.5	19.6	13.1	13.3	8.9	14.4	16.0	20.1	24.1	22.8	10.0
Record <sup>c</sup> start year	1960	1970	1957	1970	1960	1971	1968	1962	1966	1965	1965	1968
Record <sup>c</sup> end year	2010	2010	2010	2006	2010	2010	2010	2009	2010	2010	1997	2010
Record <sup>c</sup> length [yr]	51	34	51	35	51	40	43	48	45	44	33	43
Dominant crop(s) in 1951 <sup>d</sup>	c	c	c	c, sc, p	c, sc, f	c, sc, f	c, sc, f	sc	c, sc, f	c	c	c, sc
Dominant geology <sup>e</sup>	v, gd, ls	v	v, gd	v, gd	v, gd, q	gd	v	v, gd, q	v, gd	v, gd	v, gd	v, ls
Long-term catchment means of hydroclimatic parameters calculated for record <sup>c</sup> period												
Baseflow recession constant ( $k_{bf}$ [d <sup>-1</sup> ])	0.956	0.942	0.949	0.935	0.940	0.927	0.943	0.919	0.925	0.926	0.929	0.959
Precipitation ( $P$ [mm yr <sup>-1</sup> ])	2102	2038	2004	1827	1963	2039	3422	2875	1720	1781	1875	2178
Total streamflow ( $Q_{tot}$ [mm yr <sup>-1</sup> ])	953	812	653	642	845	1067	942	1529	1185	681	743	1509
Baseflow ( $Q_{bf}$ [mm yr <sup>-1</sup> ])	680	389	341	320	420	394	463	656	601	441	388	673
Quickflow ( $Q_{qf}$ [mm yr <sup>-1</sup> ])	273	423	312	322	426	673	480	872	584	241	354	836
$P - Q$ [mm yr <sup>-1</sup> ]	1149	1225	1351	1185	1118	972	2480	1347	535	1100	1132	669
Potential evaporation (PET [mm yr <sup>-1</sup> ])	1487	1407	1456	1535	1542	1548	1399	1449	1514	1502	1519	1658
Runoff coefficient ( $Q_{tot}/P$ [–])	0.453	0.399	0.326	0.351	0.431	0.523	0.275	0.532	0.689	0.383	0.396	0.693
Aridity index ( $P/PET$ [–])	1.42	1.46	1.38	1.18	1.28	1.33	2.46	1.97	1.15	1.18	1.23	1.31
Baseflow index <sup>f</sup> ( $Q_{bf}/Q_{tot}$ [–])	0.714	0.479	0.522	0.499	0.496	0.369	0.491	0.429	0.507	0.647	0.522	0.446

<sup>a</sup> Computed catchment area; see Sect. 3.2. <sup>b</sup> Calculated by dividing the diameter of a circle having the same area as the catchment, by the maximum length of the catchment (Schumm, 1956). <sup>c</sup> Record is defined as the period of simultaneous  $P$ , PET, and  $Q$  data. Several catchments have gaps in their record. <sup>d</sup> After Brockmann (1952) and Kennaway and Helmer (2007). Explanation of abbreviations used: c, shade coffee; sc, sugar cane; f, fruits and orchards; p, pineapple. See Sect. 3.1 for details. <sup>e</sup> After Olcott (1999). Explanation of abbreviations used: v, mixed volcanic; gd, granodiorite; ls, limestone; q, Quaternary alluvium. See Sect. 2. <sup>f</sup> Separated using the forward- and backward-recursive filter of Van Dijk (2010).

**Table 2.** Generalized land-cover classes as used here and their relation to the specific land-cover classes distinguished in the 1951, 1978, and 1991/2000 land-cover maps. The numbers correspond to the values for the classes used in the original land-cover maps.

Generalized classes	1951 map	1978 map	1991/2000 maps
Urban	1. Urban and coastal sand	12. Urban	1. High-medium density urban 2. Low-medium density urban
Bare ground		10. Rocky areas	20. Salt or mud flats 25. Quarries 26. Coastal sand and rock 27. Bare soil (including bulldozed land)
Pasture	4. Pasture and grass	3. Pasture	5. Pasture, hay or inactive agriculture 6. Pasture, hay or other grassy areas
Wetland	6. Non-forested wetlands	8. Mangroves 9. Non-forested wetland	19. Emergent wetlands including seasonally flooded pasture 21. Mangrove 23. Pterocarpus swamp
Agriculture	2. Herbaceous agriculture and hay 3. Coffee and mixed woody agriculture	2. Agriculture	3. Herbaceous agriculture 4. Active sun coffee and mixed woody agriculture
Forest	5. Forest, woodlands, shrublands, and forested wetlands 12. Unknown	4. Dense canopy forest 1 5. Dense canopy forest 2 6. Less dense canopy forest 7. Woodland and shrubland	7. Drought deciduous open woodland 8. Drought deciduous dense woodland 9. Deciduous, evergreen coastal and mixed forest or shrubland 10. Semi-deciduous and drought deciduous forest on alluvium and non-carbonate substrates 11. Semi-deciduous and drought deciduous forest on karst/limestone (includes semi-evergreen forest) 12. Drought deciduous, semi-deciduous and seasonal evergreen forest on serpentine 13. Seasonal evergreen and semi-deciduous forest on karst 14. Seasonal evergreen and evergreen forest 15. Seasonal evergreen forest with coconut palm 16. Seasonal evergreen and evergreen forest on karst 17. Evergreen forest on serpentine 18. Sierra palm, transitional and tall cloud forest 22. Seasonally flooded savannahs and woodlands 24. Tidally flooded evergreen dwarf-shrubland and forb vegetation 29. Elfin and sierra palm cloud forest
Water body	10. Water/other	11. Water body	0. Water 28. Water (permanent)

flows); and (4) the annual mean dry-season (January–March) flow ( $Q_{\text{dry}}$  [ $\text{mm yr}^{-1}$ ]).

For four catchments the daily  $Q$  strongly exceeded the daily  $P$  (see Sect. 4.1) on one or more days, indicating errors in the  $Q$  and/or  $P$  data. To prevent such errors from biasing the results, for some catchments parts of the  $Q$  record were excluded from the analysis. Specifically, for the Bauta catchment data for 1996–1998 were excluded, for the Grande de Loíza catchment data prior to 1961 were excluded, for the

Fajardo catchment data for 1989 were excluded, and for the Inabón catchment data for 1975 were excluded.

### 3.3 Precipitation

Daily  $P$  data from the Global Historical Climatology Network-Daily (GHCN-D) database<sup>4</sup> (Gleason, 2002) and

<sup>4</sup>Downloaded from <ftp://ftp.ncdc.noaa.gov/pub/data/ghcn/daily/> in December 2010.

**Table 3.** HBV-light model parameter units, descriptions, and ranges used for the calibration. The K2 and MAXBAS parameters were not calibrated, but were set to  $1 - k_{bf}$  (cf. Table 1) and one, respectively. For the Valenciano, Canóvanas, Grande de Patillas, and Culebrinas catchments calibration ranges of 1.2–1.3, 0.7–0.8, 1.4–1.5, and 1.4–1.5, respectively, were used for PCORR. For the remaining eight catchments PCORR was set to one.

Parameter	Units	Description	Minimum	Maximum
BETA	–	Shape coefficient of recharge function	1	6
FC	mm	Maximum soil moisture storage	50	750
K0	d <sup>-1</sup>	Recession coefficient of upper zone	0.05	0.99
K1	d <sup>-1</sup>	Recession coefficient of upper zone	0.01	0.50
K2	d <sup>-1</sup>	Recession coefficient of lower zone	–	–
LP	–	Soil moisture value above which actual ET <sub>a</sub> reaches PET	0.05	0.95
MAXBAS	d	Length of equilateral triangular weighting function	–	–
PERC	mm d <sup>-1</sup>	Maximum percolation to lower zone	0	5
UZL	mm	Threshold parameter for extra outflow from upper zone	0	100
PCORR	–	<i>P</i> correction factor required to close water budget	–	–

from the El Verde station in north-eastern Puerto Rico<sup>5</sup> were used. After quality checks, the entire record from the Cerro Maravilla station (included in the GHCN-D database) and 1991–1994 data from the El Verde station were excluded from the analysis. Stations with a record > 20 yr were selected from the GHCN-D database, resulting in a dataset comprising 70 stations (including the El Verde station). Figure 2 presents the number of *P* observations available for each day between 1955 and 2010. In addition, a map<sup>6</sup> of mean annual *P* derived using the Precipitation-elevation Regressions on Independent Slopes Model (PRISM) method (based on data from 1963–1995; Daly et al., 1994, 2003) was used to ensure reliable long-term, elevation-corrected *P* for the catchments. The method used to obtain time series of daily *P* for each catchment is described in Sect. 4.1.

### 3.4 Minimum and maximum air temperature

Daily minimum and maximum air temperature ( $T_{\min}$  and  $T_{\max}$ , respectively [°C]) were used to compute daily time series of PET for each catchment.  $T_{\min}$  and  $T_{\max}$  time series (> 20 yr) are available for 21 stations in Puerto Rico within the GHCN-D database (Gleason, 2002). Figure 2 presents the number of daily  $T_{\min}$  and  $T_{\max}$  observations between 1955 and 2010. Maps of mean annual  $T_{\min}$  and  $T_{\max}$  from the WorldClim dataset<sup>7</sup> (~ 1 km resolution; Hijmans et al., 2005) were also used to ensure reliable long-term, elevation-corrected  $T_{\min}$  and  $T_{\max}$  for the catchments.

<sup>5</sup>Downloaded from <http://luq.lternet.edu/data/lterdb14/data/evrain.htm> in July 2011.

<sup>6</sup>Downloaded from <http://www.wcc.nrcs.usda.gov/ftpref/support/climate/prism/> in September 2011.

<sup>7</sup>Downloaded from <http://www.worldclim.org> in September 2011.

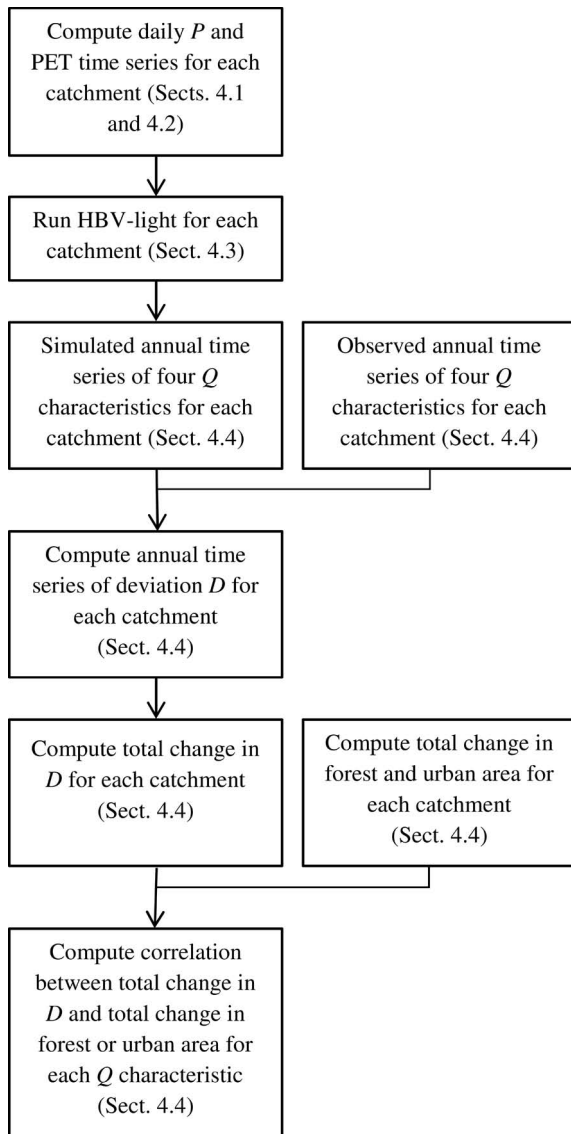
## 4 Methodology

Figure 3 presents a flow diagram summarizing the various steps that were carried out to investigate whether changes in forest and/or urban area have influenced the observed *Q* characteristics. The various steps will be explained in detail hereafter.

### 4.1 Spatio-temporal interpolation and rescaling of climatic variables

Having reliable catchment-mean time series of the climatic variables (*P*,  $T_{\min}$ , and  $T_{\max}$ ) is important to prevent spurious trends in the simulated *Q* from influencing the results. To calculate time series of the climatic variables from 1955 (marking the start of many records) to 2010 for the catchments an approach was developed that (1) removed the linear trend from the time series for each station and variable; (2) spatially interpolated the trend and daily-irregular components; and (3) reunited them on a per-pixel basis; after which (4) the time series were rescaled. More specifically, the following steps were carried out for each variable (where *X* denotes the variable in question):

1.  $T_{\min}$  and  $T_{\max}$  data were converted from °C to K. For each station with a record length > 20 yr, trends were calculated from annual mean *X* time series using the non-parametric Mann–Kendall statistical test (Mann, 1945; Kendall, 1975) with Sen’s estimate of slope (Sen, 1968).
2. For each station daily *X* time series were de-trended and divided by the station mean such that the new mean is unity.
3. Daily maps with a resolution of 0.02° (~ 2 km) were computed from time series of *X* trend (having a constant value for each station) and from time series of



**Fig. 3.** Flow diagram summarizing the various steps that were carried out to examine whether changes in forest and/or urban area have influenced the observed  $Q$  characteristics.

de-trended unity  $X$  values using spatial interpolation (see next paragraph).

4. On a per-pixel basis the cumulative integral of the trend was calculated and offset such that the mean is unity, resulting in time series of net  $X$  change.
5. By multiplying the time series of net  $X$  change by time series of de-trended unity  $X$  values, time series of unity  $X$  values were obtained.
6. The time series of unity  $X$  values were multiplied by a map of elevation-corrected long-term mean  $X$  (PRISM for  $P$ , and WorldClim for  $T_{\min}$  and  $T_{\max}$ ; see Sects. 3.3 and 3.4, respectively).

7. Finally, daily  $X$  time series were calculated for each catchment by averaging over all the pixels comprising each catchment, and the  $T_{\min}$  and  $T_{\max}$  time series were re-converted from K to  $^{\circ}\text{C}$ .

We employed the computationally efficient inverse-distance weighting (IDW; Shepard, 1968; Dirks et al., 1998) technique for the spatial interpolation. The IDW technique requires a value for the distance-decay parameter, which controls how much weight is given to nearby stations relative to stations further away. Although it is recognized that this parameter varies per location (e.g. Lu and Wong, 2007), following recommendations by Garcia et al. (2008), and to reduce computational time, here a constant value of 3 was assumed.

The present approach has two advantages over the customary approach of using the nearest station with the longest record. Firstly, information from all nearby stations with records  $> 20$  yr is incorporated. Secondly, our approach ensures unbiased mean annual values by rescaling against elevation-corrected long-term means. On the other hand, there are two caveats. First of all, portions of a time series may originate from different stations, thereby introducing spurious signals if, for instance, they have different seasonal patterns. Furthermore, for  $P$ , step six of the approach merely changes the intensity of the series, and does not correct for storm events unsampled by the isolated “point” network of meteorological stations.

## 4.2 Potential evaporation

The present study used the empirical Hargreaves equation (Hargreaves and Samani, 1985) according to guidelines set by the UN Food and Agriculture Organization (FAO; Allen et al., 1998) to assess long-term changes in the evaporative situation of the study catchments. The Hargreaves equation (Hargreaves and Samani, 1985) reads:

$$\text{PET} = 0.0023 \sqrt{T_{\max} - T_{\min}} \times \left( \frac{T_{\max} + T_{\min}}{2} + 17.8 \right) R_a, \quad (1)$$

where  $R_a$  is the extraterrestrial radiation [ $\text{mm d}^{-1}$ ].  $R_a$  was computed as described by Allen et al. (1998). The approach followed to obtain catchment-wide daily mean time series of  $T_{\min}$  and  $T_{\max}$  is outlined in Sect. 4.1. The choice for the empirical Hargreaves method was motivated on the one hand by the lack of available long-term data for the climatic variables required for more physically based methods such as the Penman–Monteith equation (Monteith, 1965), and on the other hand by the better availability of  $T_{\min}$  and  $T_{\max}$  data. The Hargreaves method has been evaluated successfully against PET based on the Penman–Monteith equation (Trajkovic, 2007) and various other equations (Lu et al., 2005; Sperna Weiland et al., 2012).



### 4.3 HBV-light model

The HBV-light model (Seibert, 2005) was used to simulate  $Q$ . HBV-light is a spatially-lumped, conceptual rainfall-runoff model based on the HBV model (Bergström, 1976). HBV-light runs at a daily time step, has two groundwater stores and one unsaturated-zone store, and uses daily time series of  $P$ , PET, and  $T$  as inputs.  $T$  was not relevant in the present case since it is only used to drive the snow model subroutine. Rainfall interception is not estimated explicitly in HBV-light but is implicit in the BETA, FC, and UZL parameters. Although the model has been used predominantly in temperate-zone catchments (e.g. Te Linde et al., 2008; Steele-Dunne et al., 2008; Driessen et al., 2010), it has also been used successfully in tropical settings and for a range of catchment sizes, e.g. in Fiji (0.63 km<sup>2</sup>; Waterloo et al., 2007), southern Ecuador (75 km<sup>2</sup>; Plesca et al., 2012), and Thailand (12 100 km<sup>2</sup>; Wilk et al., 2001). For in-depth discussion of the model, see Seibert (2005). Table 3 briefly describes the model parameters and lists the calibration ranges used. We were unable to close the water balance for several catchments after exhausting all possible parameter combinations, probably due to errors in the PRISM  $P$  map,  $Q$  data and/or catchment boundary data, (non-quantified) water extractions, and/or inter-basin groundwater transfers. Therefore, an additional parameter (PCORR) was introduced that scaled  $P$  as required to match observed and predicted  $Q$ . Note that HBV-light does not consider groundwater flow within or between catchments.

Model parameters for each catchment were calibrated using Latin hypercube sampling (LHS; McKay et al., 1979). LHS is a more efficient alternative (Yu et al., 2001) to the commonly used Monte Carlo technique (Metropolis, 1987; Beven, 1993; Seibert, 1999). Using LHS the parameter space (Table 3) is split up in  $n$  equal intervals. Values for the parameters are generated by sampling each interval just once in a random manner. The model is run  $n$  times with random combinations of the parameter values from each interval for each parameter. Here  $n = 30\,000$  model runs were used to ensure convergence of the performance criterion. The first 10 yr of the record (Table 1) were used as spin-up period to initialize the groundwater stores after which the model was run for the entire period (i.e. the first 10 yr were run twice). The split-sample procedure was used to calibrate the parameters against data from the second half of the period and validate the parameters against data from the first half of the period (Refsgaard, 1997).

Parameters of hydrological models are commonly calibrated using a composite of objective functions (i.e. a summary statistic incorporating several measures of performance; e.g. Madsen, 2000). Here, three different objective functions that strike a balance between accurate representations of all portions of the hydrograph were used. The first objective function represents the Nash–Sutcliffe efficiency (Nash and Sutcliffe, 1970; NS [–]). The NS is defined as

$$NS = 1 - \frac{\sum_{t=1}^k (Q_s^t - Q_o^t)^2}{\sum_{t=1}^k (Q_o^t - \overline{Q_o})^2}, \quad (2)$$

where  $Q_s$  and  $Q_o$  represent 3-day mean simulated and observed  $Q$ , respectively [mm d<sup>-1</sup>],  $t$  is the time step [–], and the summation is over  $t = 1, 2, \dots, k$ . The second objective function (NS<sub>log</sub> [–]) is the NS calculated from log-transformed  $Q_s$  and  $Q_o$ , thereby giving more weight to low  $Q$  values. NS and NS<sub>log</sub> were calculated from 3-day mean  $Q$  to account for the flashy nature of the streams, which resulted in frequent mismatches between daily peaks of observed and simulated  $Q$ , thereby confounding the calibration. The third and final objective function represents the volume error (VE [%]):

$$VE = 100 \frac{\overline{Q_s} - \overline{Q_o}}{\overline{Q_o}}. \quad (3)$$

For each run, the objective functions were combined to form a single aggregate measure using the combined-rank method (Booij and Krol, 2010).

The main analysis was conducted using the 30 “best”  $Q$  simulations. Parameter uncertainty (e.g. Beven, 1993; Seibert, 1997) was quantified as described in Sect. 4.4. It should be noted that the K2 parameter in HBV-light was not calibrated, but was set to  $1 - k_{bf}$  (where  $k_{bf}$  is the baseflow recession constant listed in Table 1). In addition, the MAXBAS parameter was not calibrated, but was set to one, since the travel time for the catchments under study is likely to be less than a day (confirmed by exploratory calibration efforts in all catchments). The PCORR parameter was calibrated only for catchments that had absolute VE values > 20% for the calibration period when PCORR was set to one and parameter combinations were exhausted. For these catchments, the range of PCORR values used for the calibration was an initial estimate  $\pm 0.05$ , where the initial estimate was calculated based on the initially obtained VE values.

### 4.4 Evaluation of the impacts of land-cover change on streamflows

For each catchment and  $Q$  characteristic, annual time series of the deviation between observations and simulations were calculated as

$$D_d^x = 100 \frac{Q_{obs}^x - Q_{sim,d}^x}{Q_{obs}^x}, \quad (4)$$

where  $D$  are the deviation time series [%],  $Q_{obs}$  and  $Q_{sim}$  are annual time series of the observed and simulated  $Q$  characteristics, respectively,  $x$  is the year, and  $d = 1, 2, \dots, 30$  are the simulations.  $D$  integrates the effects of  $P$  and PET

**Table 4.** Calibrated parameter values for the single best simulation by the HBV-light model, and objective-function scores (mean of the 30 best simulations) for the calibration and validation periods, computed from 3-day means. The PCORR parameter was only calibrated for four catchments.

	A: Panamá	B: Bauta	C: Grande de Manatí	D: Cibuco	E: Grande de Loíza	F: Valenciano	G: Canóvanas	H: Fajardo	I: Grande de Patillas	J: Inabón	K: Portugués	L: Culebrinas
Calibrated parameter values for the simulation with the best performance												
BETA [–]	1.351	1.306	0.940	2.887	2.999	0.862	3.204	4.212	1.056	1.041	1.117	3.633
FC [mm]	995	927	651	493	874	394	918	889	514	987	918	893
K0 [d <sup>–1</sup> ]	0.934	0.521	0.666	0.756	0.611	0.699	0.778	0.752	0.462	0.514	0.337	0.508
K1 [d <sup>–1</sup> ]	0.284	0.353	0.366	0.210	0.441	0.274	0.449	0.270	0.489	0.246	0.323	0.492
LP [–]	0.685	0.328	0.146	0.854	0.888	0.144	0.443	0.901	0.525	0.443	0.420	0.851
PERC [mm d <sup>–1</sup> ]	4.645	2.571	1.697	1.807	1.757	1.490	1.832	2.706	3.303	3.065	4.524	3.077
UZL [mm]	80	3	4	0	7	4	8	0	7	65	2	19
PCORR [–]	1.000	1.000	1.000	1.000	1.000	1.215	0.712	1.000	1.415	1.000	1.000	1.400
Objective-function scores for the calibration period, computed from 3-day means												
NS [–]	0.62	0.63	0.63	0.65	0.77	0.72	0.75	0.65	0.78	0.58	0.46	0.37
NS <sub>log</sub> [–]	0.60	0.71	0.76	0.42	0.76	0.60	0.56	0.58	0.68	0.56	0.53	0.60
VE [%]	–6.22	4.11	11.97	–1.63	–7.56	1.78	12.63	2.22	–0.69	–0.09	–13.26	–1.01
Objective-function scores for the validation period, computed from 3-day means												
NS [–]	0.50	0.64	0.68	0.71	0.73	0.68	0.63	0.54	0.77	0.62	0.40	0.52
NS <sub>log</sub> [–]	0.60	0.68	0.60	0.63	0.74	0.63	0.50	0.53	0.67	0.67	0.60	0.77
VE [%]	–1.27	–16.91	–13.65	0.44	–8.83	–3.95	10.81	–7.57	–1.91	–15.64	–6.89	–4.79

variability and basin carry-over storage on the  $Q$  characteristics, thereby isolating the impact of other factors, notably land-cover change.

For each catchment and  $Q$  characteristic, the trend (termed  $\hat{a}_J$  [%]) in the annual time series of  $D$  prior to 2000, when land-cover data are available, was calculated using the non-parametric jackknife resampling technique (Quenouille, 1956; Tukey, 1958). From each of the 30 annual time series of  $D$  consisting of  $M$  values, this procedure takes  $M$  subsamples of  $M - 1$  values by omitting a different value each time. The trend in annual time series of  $D$  prior to 2000 is re-computed for each subsample, using the least-squares method, thus obtaining for each  $Q$  characteristic a 30-by- $M$  matrix of trend estimates. The mean of the trend estimates was taken as the final trend estimate ( $\hat{a}_J$ ). The total change ( $\hat{A}$  [%]) in  $D$  prior to 2000 is subsequently calculated by

$$\hat{A} = \hat{a}_J L, \quad (5)$$

where  $L$  [–] is the length of the record until 2000 (cf. Table 1).  $\hat{A}$  can be interpreted as the cumulative change in annual observed values of the  $Q$  characteristic after accounting for the effects of climate variability and carry-over water storage on the  $Q$  characteristic.

The standard error associated with  $\hat{a}_J$  (termed  $\hat{\sigma}_J$  [%]) consists of two parts. The first ( $\hat{\sigma}_s$  [%]) was calculated from the mean dispersion of  $\hat{a}$  within the time series of  $D$ , and is indicative of observational errors in  $P$ , PET, and  $Q$  data, nonlinearities in the land-cover impact on  $Q$ , and/or possible defects in the HBV-light model structure.  $\hat{\sigma}_s$  was calculated using the jackknife technique as follows:

$$\hat{\sigma}_s = \frac{1}{30} \sum_{d=1}^{30} \sqrt{\frac{M-1}{M} \sum_{i=1}^M (\hat{a}_{di} - \overline{\hat{a}_d})^2}, \quad (6)$$

where  $\hat{a}_{di}$  [%] are the estimates of  $a$  for subsamples  $i = 1, 2, \dots, M$  of annual  $D$  time series  $d = 1, 2, \dots, 30$ . The second part of the standard error ( $\hat{\sigma}_p$  [%]) was calculated from the dispersion of the mean  $a$  amongst the 30 time series of  $D$ , and is mainly indicative of parameter uncertainty. It was calculated as

$$\hat{\sigma}_p = \text{std} \left( \overline{\hat{a}_{d=1}}, \overline{\hat{a}_{d=2}}, \dots, \overline{\hat{a}_{d=30}} \right), \quad (7)$$

where std refers to the standard deviation. The two parts were combined to yield the standard error of  $\hat{a}_J$  ( $\hat{\sigma}_J$  [%]) as follows:

$$\hat{\sigma}_J = \hat{\sigma}_s + \hat{\sigma}_p. \quad (8)$$

The standard error associated with  $\hat{A}$  ( $\hat{\sigma}_{\hat{A}}$  [%]) is given by

$$\hat{\sigma}_{\hat{A}} = \hat{\sigma}_J L. \quad (9)$$

To examine whether changes in forest and/or urban area influenced the four observed  $Q$  characteristics, correlation coefficients were calculated between amounts of change in forest or urban area per catchment and corresponding values of  $\hat{A}$ . Conventionally a significance level of 0.05 is applied, but this level was adjusted for the number of inferences made (four in the present study) to 0.01 using the Bonferroni procedure (Bland and Altman, 1995).

## 5 Results

### 5.1 Changes in climatic variables

Using the new  $P$  dataset (1955–2010), which comprises the records from 70 stations, trends for the island ranging from  $-0.25$  to  $+0.41$  % yr<sup>-1</sup> (mean value  $+0.02$  % yr<sup>-1</sup>) were found (Fig. 4a). In addition, a strong north–south disparity was observed, with positive  $P$  trends mainly identified to the south of the Cordillera Central, and negative trends north of it (Fig. 4a). Likewise, the new PET dataset (1955–2010), based on 21 stations, shows similar magnitudes of change, with per-pixel values ranging from  $-0.30$  to  $+0.17$  % yr<sup>-1</sup> (mean value  $-0.03$  % yr<sup>-1</sup>), but with a less clear spatial pattern compared to  $P$  (Fig. 4b).

### 5.2 HBV-light model performance

Table 4 lists the calibrated parameter values for the HBV-light model plus objective function scores for the calibration and validation periods for each catchment. Median Nash–Sutcliffe (NS) values of 0.64 and 0.63 (median of 12 values, where each value represents the mean NS value of the 30 best simulations for each catchment) were obtained for the calibration and validation periods, respectively (Table 4). The median absolute VE values were 3.1 and 7.2 % (median of 12 values, where each value represents the mean VE value of the 30 best simulations for each catchment) for the calibration and validation periods, respectively (Table 4). Catchments F, G, I, and L required optimization of the PCORR parameter (cf. Table 4).

### 5.3 Changes in land cover

Figure 5 shows the land-cover time series for each catchment. In all catchments forest and urban areas increased markedly between 1951 and 2000 at the expense of pasture and agricultural areas. During the period of simultaneous  $P$ , PET, and  $Q$  recording (Table 1) the net change in forest and urban areas for the study catchments ranged from  $+2$  to  $+55$  % (mean value  $+26$  %) and from  $+2$  to  $+11$  % (mean value  $+7$  %), respectively. The changes in pasture and agricultural areas

ranged from  $-19$  to  $+26$  % (mean value  $-7$  %) and from  $-63$  to  $+9$  % (mean value  $-26$  %), respectively.

### 5.4 Changes in streamflow characteristics

For each catchment and  $Q$  characteristic, Fig. 6 shows annual time series of the difference between observed and simulated  $Q$  as expressed by  $D$  (Eq. 4) and the corresponding fitted trend lines, whereas Table 5 lists values of the total change  $\hat{A}$  (Eq. 5) and the corresponding error  $\hat{\sigma}_{\hat{A}}$  (Eq. 9). Catchments with low NS values generally gave higher  $\hat{\sigma}_{\hat{A}}$  values (cf. Tables 4 and 5). In general  $D_{\text{tot}}$  shows the least temporal variability (Fig. 6), which is reflected by low  $\hat{\sigma}_{\hat{A}}$  values for  $\hat{A}_{\text{tot}}$  (Table 5). The low temporal variability of  $Q_{\text{tot}}$  is likely due to the low degree of sampling error associated with the calculation of annual mean  $Q$ . Most catchments show progressive decreases over time in their time series of  $D$  (Fig. 6), as indicated by the mostly negative  $\hat{A}$  values (Table 5), suggesting decreases in observed  $Q$  characteristics that are unrelated to carry-over effects of water storage and climate variability. The most pronounced decreases in  $Q_{\text{tot}}$  were found for catchments B, C, and J, whereas a moderate increase was found for catchment D. Pronounced decreases in both  $Q$  characteristics related to low flows ( $Q_{p5}$  and  $Q_{\text{dry}}$ ) were found for catchments A, C, F, G, H, J, K, and L, whereas a (moderate) increase was found only for catchment I. Clear decreases in the  $Q$  characteristic related to peak flows ( $Q_{p95}$ ) were found for catchments B, C, I, and J, whereas strong increases were found for catchments D, H, and L.

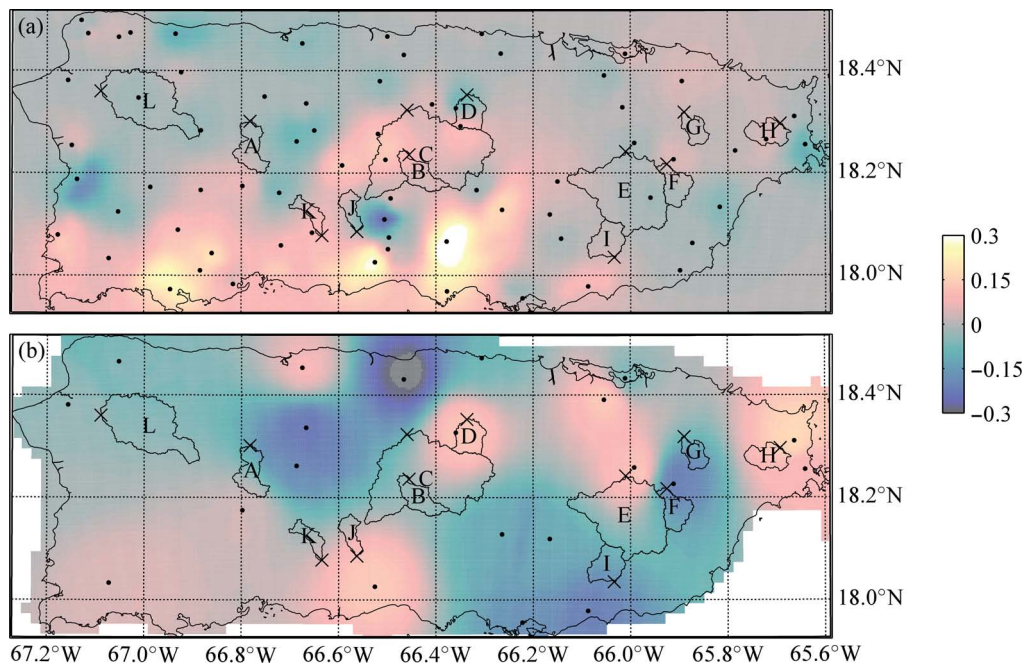
### 5.5 Impacts of land-cover change on streamflows

Figure 7 shows regressions between the amount of urban and forest area change vs. the cumulative change in annual time series of  $D$  prior to 2000 (expressed by  $\hat{A}$  in Eq. 5) for each  $Q$  characteristic. In spite of strong increases in forest and urban area, and pronounced changes in  $D$  over time for the  $Q$  characteristics of several catchments, all correlations were insignificant ( $p \geq 0.389$ ). Nonetheless, a weak (i.e. non-significant) positive relationship can be observed between changes in forest cover and changes in annual total streamflow  $Q_{\text{tot}}$ , when excluding catchments C and J (which appear to be outliers; Fig. 7c).

## 6 Discussion

### 6.1 Changes in climatic variables

Previous research on long-term changes in  $P$  in Puerto Rico, mostly using a limited number of climate stations, has suggested progressive declines in long-term  $P$  over 1900–2000 (Larsen, 2000; Van der Molen, 2002), but to the authors' knowledge no comprehensive analysis has been conducted for the entire island. Using the new  $P$  dataset (1955–2010) a strong north–south disparity in terms of trends was



**Fig. 4.** The trend [ $\% \text{ yr}^{-1}$ ] from 1955 to 2010 for annual mean (a)  $P$  and (b) PET. Significant as well as insignificant trends are shown. The points mark stations with  $> 20$  yr time series of (a)  $P$ , and (b)  $T_{\text{min}}$  and  $T_{\text{max}}$  (used to derive PET, see Sect. 4.2). Catchments identified by letters and stream gauges by crosses.

**Table 5.** Cumulative change in the difference between observed and simulated  $Q$  characteristics, as expressed by  $\hat{A}$  (Eq. 5 [%]), and corresponding standard errors ( $\hat{\sigma}_{\hat{A}}$ ; Eq. 9) for the 12 study catchments. The + and – signs indicate, respectively, increases and decreases in  $\hat{A}$ . The change covers the start of the record (cf. Table 1) until 2000.

	A: Tanamá	B: Bauta	C: Grande de Manatí	D: Cibuco	E: Grande de Loíza	F: Valenciano	G: Canóvanas	H: Fajardo	I: Grande de Patillas	J: Inabón	K: Portugués	L: Culebrinas
$\hat{A}_{p95}$	$-4 \pm 13$	$-27 \pm 24$	$-61 \pm 31$	$+17 \pm 22$	$+8 \pm 15$	$-6 \pm 22$	$-3 \pm 31$	$+39 \pm 21$	$-19 \pm 22$	$-53 \pm 19$	$+8 \pm 29$	$+19 \pm 16$
$\hat{A}_{\text{tot}}$	$-5 \pm 8$	$-15 \pm 12$	$-37 \pm 14$	$+10 \pm 12$	$-2 \pm 7$	$-19 \pm 15$	$-13 \pm 13$	$-6 \pm 13$	$-16 \pm 9$	$-34 \pm 12$	$+7 \pm 18$	$+9 \pm 10$
$\hat{A}_{p5}$	$-12 \pm 17$	$-13 \pm 23$	$-52 \pm 18$	$-17 \pm 22$	$-33 \pm 19$	$-58 \pm 39$	$-65 \pm 35$	$-147 \pm 34$	$+17 \pm 19$	$-22 \pm 19$	$-12 \pm 22$	$-29 \pm 22$
$\hat{A}_{\text{dry}}$	$-10 \pm 16$	$+5 \pm 33$	$-49 \pm 21$	$+1 \pm 16$	$+13 \pm 19$	$-42 \pm 33$	$-44 \pm 23$	$-48 \pm 20$	$+3 \pm 21$	$-32 \pm 17$	$-13 \pm 28$	$-7 \pm 24$

observed (Fig. 4a), which may be attributed to changes in wind patterns induced by changes in sea surface temperature (Comarazamy and González, 2011; cf. Van der Molen et al., 2006). Although trends in PET (1955–2010) were just as strong, they showed a less clear spatial pattern. Nevertheless, these findings reaffirm the importance of accounting for climate variability in studies assessing the effects of land-cover changes on  $Q$ .

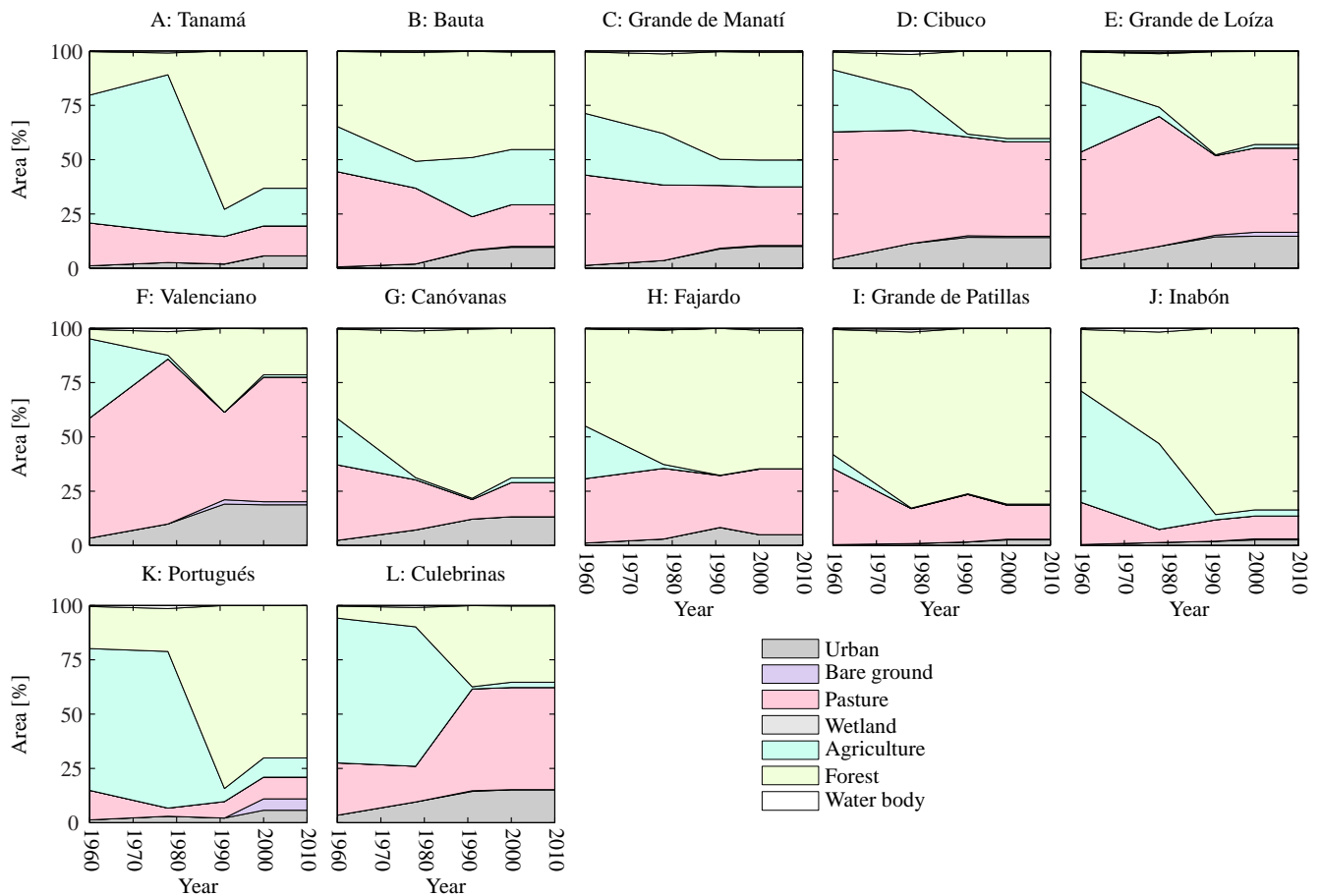
## 6.2 HBV-light model performance

The HBV-light performance was good for both the calibration and validation periods (Table 4), suggesting that the simulated  $Q$  for the catchments can be used with confidence. Note that strong land-cover effects would have deteriorated performance statistics for the validation period. Several catchments required optimization of the PCORR parameter (cf. Table 4), possibly due to biases in the PRISM  $P$  map, uncertainties in the  $Q$  and/or catchment boundary data, water extractions, inter-basin groundwater transfers (potentially exacerbated by karst), and/or water recycling (e.g. Ellison et al., 2012), which combined may cancel out or amplify

**Table 6.** Previous studies on tropical, subtropical, and warm temperate meso- ( $\geq 1 \text{ km}^2$ ) and macro-scale ( $\geq 10\,000 \text{ km}^2$ ) catchments investigating the impact of changes in forest area on  $Q$ , listed alphabetically by country name. Only findings based on time-series analysis were listed. Present study included for completeness. In the “ $Q$  change” column “No change” also includes insignificant changes in flows. Where possible the reported change in  $Q$  was corrected for  $P$  variability. The “No. of gauges” column lists the number of stream gauges used in the analysis. The + and – signs indicate, respectively, increases and decreases in forest area or  $Q$ . The mean annual PET values represent reported estimates or Penman–Monteith estimates taken from Fisher et al. (2011) when no estimate was reported. Abbreviations:  $P$ , precipitation; PET, potential evaporation; and CO, carry-over water storage.

Region (country)	No. of gauges	Area [ $\text{km}^2$ ]	Mean $P$ [ $\text{mm yr}^{-1}$ ]	Mean PET [ $\text{mm yr}^{-1}$ ]	Forest area change [%]	Time series length [yr]	Corrections applied	$Q$ change [%]	Reference
Comet, Upper Burdekin (Australia)	2	16 440, 17 299	650, 690	1680, 1930	–45, –25	62, 13	$P$ , PET	No change	Peña-Arancibia et al. (2012)
Tocantins (Brazil)	1	767 000	1600	1600	–19	40	$P$	+24	Costa et al. (2003)
Ji-Paraná (Brazil)	7	33 012	1875	1450	–50	23	$P$	No change	Linhares (2005)
P. en Nirivilo, C. en El Arrayán (Chile)	2	253, 708	835, 718	1100, 1100	+5, +9 <sup>a</sup>	20	$P$	–43, –32 <sup>b</sup>	Rodríguez et al. (2010) Little et al. (2009)
Guangdong Province (China)	32 <sup>c</sup>	179 752	1770	1230	+33	51	$P$ , PET	No change	Zhou et al. (2010)
Dakeng (China)	1	10	1530	1050	–19	27	$P$ , PET	–22 <sup>d</sup>	Sun et al. (2008)
Hainan Island (China)	12	7 to 729	1950	1350	–29	25	$P$	No change <sup>e</sup>	Qian (1983)
Upper Yangtze (China)	4	200 000	793	900	+8	41	$P$	+10 <sup>f</sup>	Cheng (1999)
Citarum River (Indonesia)	1	4133	2500	1650	–50	16	$P$	+11 <sup>f</sup>	Van der Weert (1994)
Galas, Kelantan (Malaysia)	2	13 100	2000	1500	–3, +6 <sup>g</sup>	31	$P$	No change	Adnan and Atkinson (2011)
Río Fajardo (Puerto Rico)	1	40	2908	1500	+12	23	$P$	–25	Wu et al. (2007)
Varios (Puerto Rico)	12	23 to 346	1720 to 3422	1393 to 1657	+2 to +55	33 to 51	$P$ , PET, CO	No change <sup>h</sup>	Present study
Nilwala (Sri Lanka)	1	380	2188	1500	–35	58	$P$	No change	Elkadawa and Sakthivadivel (1999)
Chao Phraya (Thailand)	2	14 522, 36 000	1150	1500	–45	18, 25	$P$	No change	Dyhr-Nielsen (1986)
Nam Pong (Thailand)	1	12 100	1350	1700	–63	36	$P$ , PET, CO	No change	Wilk et al. (2001)
Upper Tacuarembó (Uruguay)	1	2097	1300	1230	+26	34	$P$	–38	Silveira and Alonso (2009)
Southern Piedmont (USA)	10	2820 to 19 450	1300	1050	+10 to +28	49	$P$	–4 to –21 <sup>h</sup>	Trimble et al. (1987)

<sup>a</sup> Represents the net forest area change of native forest cover (–38 and –28 %, respectively) and forest plantations (+43 and +37 %, respectively). <sup>b</sup> Refers to changes in summer  $Q$ . <sup>c</sup> Mostly nested catchments. <sup>d</sup> The decrease in  $Q$  was explained by the higher  $ET_a$  of the regenerating vegetation. <sup>e</sup> Refers to changes in peak flows only. <sup>f</sup> Bruijnzeel (2004) argues that these increases in  $Q$  should be ascribed to urbanization rather than tree planting. <sup>g</sup> Represents the net forest area change of native forest cover (–9 and +2 %, respectively) and forest plantations (+6 and +4 %, respectively). <sup>h</sup> No relationship was found between the degree of forest-cover change and the change in  $Q$ .



**Fig. 5.** Changes with time in area of the dominant land-cover types for the study catchments. Graphs are based on generalized (cf. Table 2) land-cover classification maps for the years 1951, 1978, 1991, and 2000.

one another. However, the influence of the  $P$  scaling on the results is probably limited because the simulated  $Q$  was only used to control for climate and storage carry-over effects.

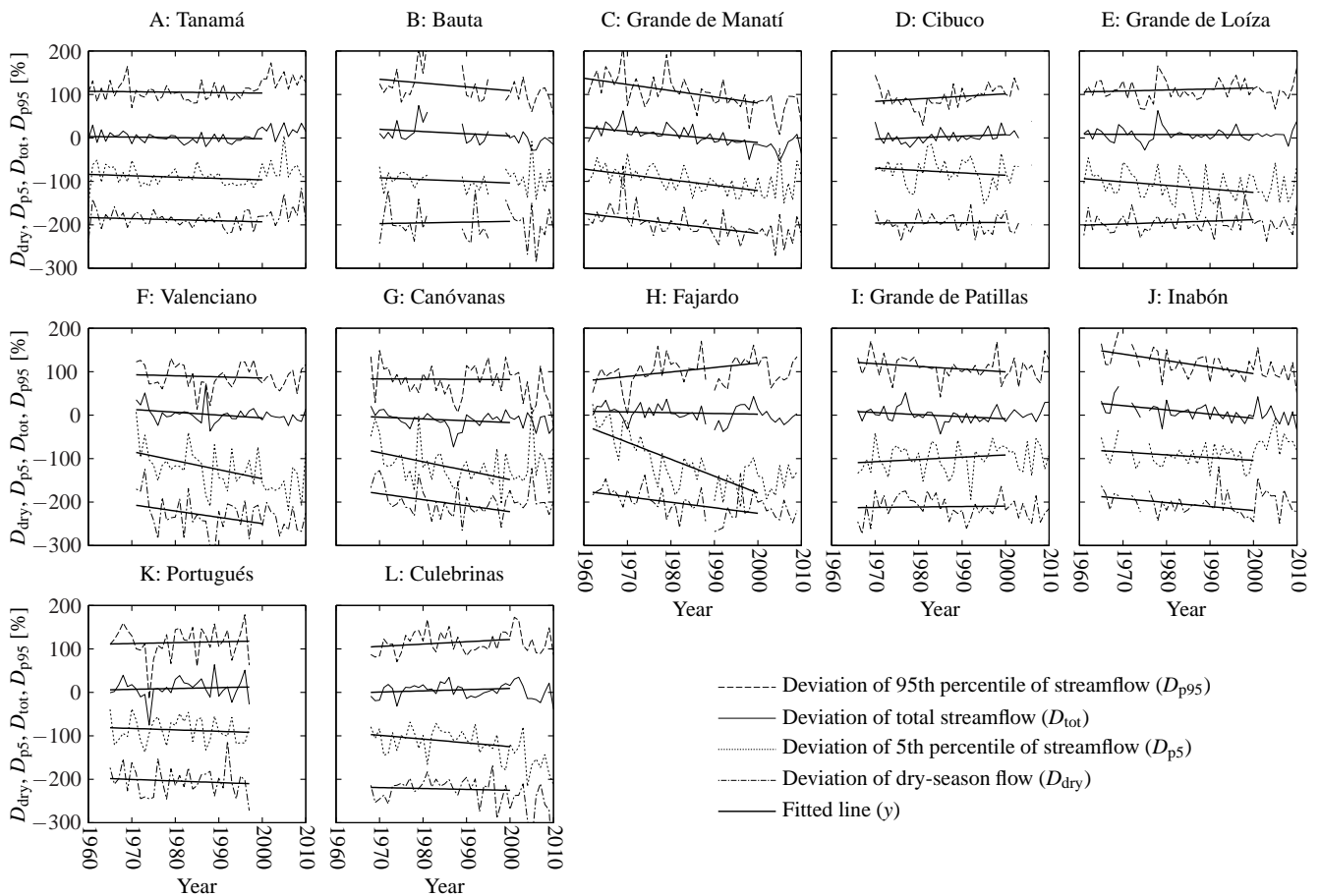
### 6.3 Impacts of land-cover change on streamflows

We were unable to support the three hypotheses because no significant relationships ( $p < 0.01$ ) were found between the change in forest cover or urban area, and the change in the investigated  $Q$  characteristics across the 12 catchments (Fig. 7). This result agrees with previous meso- to macro-scale catchment studies in the tropics, subtropics, and warm temperate regions (Table 6), which mostly failed to demonstrate a clear relationship between  $Q$  and change in forest area. Our use of multiple catchments proved important since many individual catchments showed pronounced changes in flow characteristics that might well have been attributed to land-cover change otherwise.

Nevertheless, a weak positive relationship was observed between the change in forest cover and the change in  $Q_{\text{tot}}$  (Fig. 7c), tentatively suggesting that regeneration of forests leads to increases in  $Q$  in Puerto Rico. If true, this would

imply that in the investigated catchments the increase in  $Q$  due to enhanced rainfall infiltration during forest regrowth overrides the decrease in  $Q$  associated with the greater water use of the aggrading forests (cf. Bruijnzeel, 1989; Scott et al., 2005). The soils beneath young secondary forests in Puerto Rico show higher bulk density than beneath mature secondary forests (Weaver et al., 1987; Lugo and Scatena, 1995) and are less structured (Lugo and Helmer, 2004). Presumably, this reflects soil compaction by livestock and cropping prior to abandonment and subsequent secondary forest regeneration. However, the general level of soil degradation under pasture in Puerto Rico (cf. Aide et al., 1996) is probably not sufficient to cause widespread occurrence of overland flow, although surface erosion under sugar cane and coffee plantations has been reported to be rampant in parts of the island (e.g. Smith and Abruña, 1955; Del Mar López et al., 1998). Unfortunately, to date, no unequivocal case of a positive relationship between changes in  $Q$  and reforested degraded area has been reported in the tropics (cf. Table 6), although demonstrated decreases in the amounts of headwater- or hillslope stormflow generation after reforesting severely degraded land (Chandler and Walter,



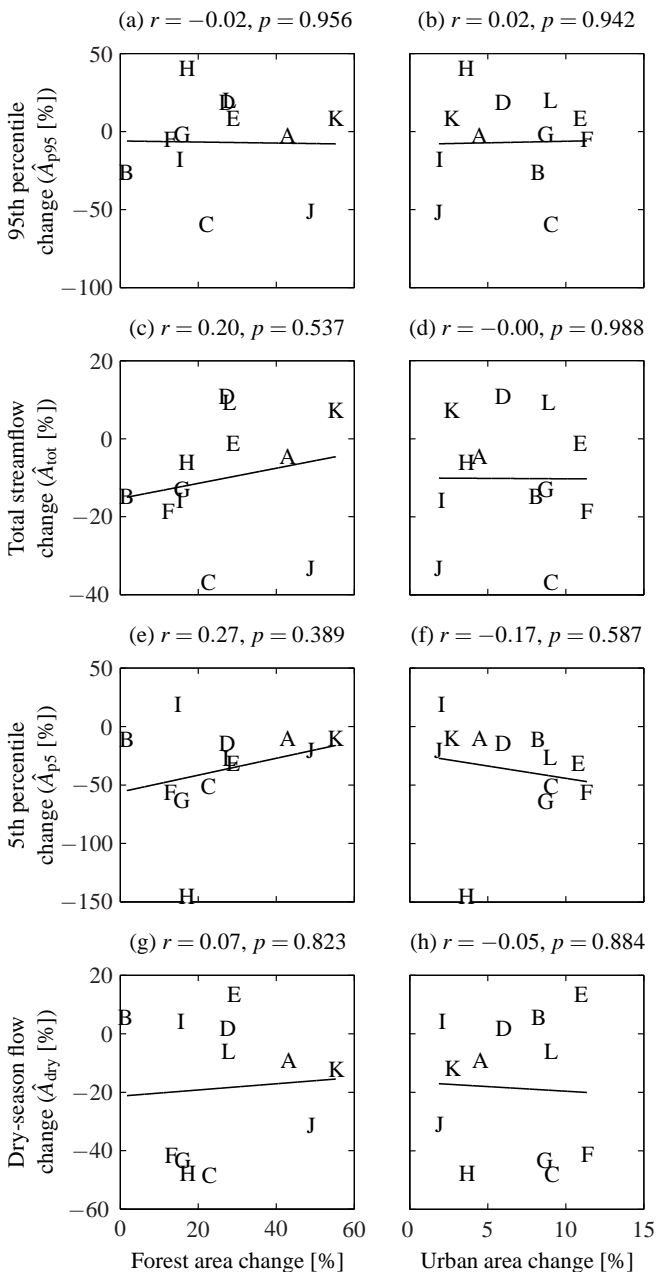


**Fig. 6.** Annual time series of  $D_{p95}$ ,  $D_{tot}$ ,  $D_{p5}$ , and  $D_{dry}$  (displayed, respectively, from top to bottom in each panel; calculated using Eq. 4) and fitted trend lines. For clarity the  $D_{p95}$ ,  $D_{p5}$ , and  $D_{dry}$  time series were offset by +100, -100, and -200 %, respectively.

1998; Zhou et al., 2002; Zhang et al., 2004; Sun et al., 2006) must be considered large enough to overcome the associated increases in forest water use (Chandler, 2006; cf. Bruijnzeel, 2004; Scott et al., 2005). Nevertheless, long-term  $Q$  data for large, once degraded but subsequently rehabilitated catchments in sub-humid Texas (Wilcox and Huang, 2010) and the humid Red Soils region of southern China (Zhou et al., 2010) have recently indicated gradually increased  $Q_{bf}$  over prolonged periods of time following large-scale land rehabilitation and regreening, suggesting soil improvement to be the dominant factor in these cases. Further process-based work is required to substantiate this contention. Similarly, pending the results of hydrological process studies in Puerto Rico’s regenerating forests (in particular, infiltration and soil water retention vs. forest water use) the presently obtained positive relationships between the change in forest cover and the change in  $Q_{tot}$  may be spurious.

The present investigation is confounded somewhat by modest urbanization occurring simultaneously with forest regeneration in some of the investigated catchments (Fig. 5). Since urbanization typically increases the area of impervi-

ous surfaces, thereby enhancing the frequency and intensity of infiltration-excess overland flow, more  $Q_{qf}$  is produced (e.g. Harto et al., 1998; DeWalle et al., 2000; Ziegler et al., 2004; Rijdsdijk et al., 2007). This, if progressing beyond a critical threshold, can even result in reductions in  $Q_{bf}$  (Van der Weert, 1994; Bruijnzeel, 1989, 2004) on top of the reductions incurred already by the higher water use of the regenerating forest (Giambelluca, 2002). However, no significant relationships ( $p < 0.01$ ) between the degree of urbanization and changes in any of the observed  $Q$  characteristics in our catchments were identified (Fig. 7). This is probably due to insufficient amounts of urbanization occurring (+2 to +11 %, mean value of +7 %; Fig. 5). Similarly, studies of the “flashiness” (sensu Baker et al., 2007) of the runoff behaviour of urbanized and forested catchments in Puerto Rico revealed no differences (Ramírez et al., 2009; Phillips and Scatena, 2010). However, Phillips and Scatena (2010) did detect significant differences ( $p < 0.05$ ) in the frequency of stage change (cf. McMahon et al., 2003), possibly indicating locally enhanced  $Q_{qf}$  due to urbanization.



**Fig. 7.** Net changes in forest and urban areas plotted against  $A_{p95}$  (a–b),  $Q_{tot}$  (c–d),  $Q_{p5}$  (e–f), and  $Q_{dry}$  (g–h) values (Eq. 5; Table 5). Each letter in the scatter plots represents a different catchment. The change covers the start of the record (cf. Table 1) until 2000.

Wu et al. (2007) reported a change in  $Q_{tot}$  of  $-25\%$  (corrected for changes in  $P$  using a single  $P$  station that was not included in the current study as it did not meet the necessary quality requirements), between 1973–1980 and 1988–1995 for the Río Fajardo catchment in north-eastern Puerto Rico (here identified as catchment H). Wu et al. (2007) attributed this negative change in  $Q$  to the small amount of forest regeneration occurring during that period (estimated at 8 %

based on the interpolated time series shown in Fig. 5). For the same catchment, here a similar change in  $Q_{tot}$  of  $-31\%$  (calculated using  $D_{tot}$ ) was found between the respective periods. However, a much smaller estimated change of  $-5\%$  (standard deviation  $\pm 4\%$ ) was obtained between the respective periods when taking into account the complete record (48 yr), using the calculated trend in  $D_{tot}$  prior to 2000 ( $\hat{\alpha}_J$ ) and the corresponding standard error ( $\hat{\sigma}_J$ , Eq. 8). Thus, Wu et al. (2007) may have overestimated the reduction in  $Q_{tot}$  for the Río Fajardo catchment because they only used part of the available record. Additionally, given that the Río Fajardo catchment appears to be an outlier in the present analysis (Fig. 7e, f) possibly due to non-quantified anthropogenic water extractions, any inferences for this catchment should be viewed with caution.

#### 6.4 Field-based estimates of vegetation water use

To explore the possible changes in total water yield that may be associated with a conversion from shaded coffee, sugar cane or pasture (the dominant land uses in Puerto Rico in 1951, see Sect. 3.1) to (semi-)mature secondary forest (current situation), it is of interest to compare the typical amounts of total water use ( $ET_a$ ) by the respective vegetation types. Field-based estimates of transpiration plus soil evaporation for shaded coffee and sugar cane in Puerto Rico range between  $1.4\text{--}3.2\text{ mm d}^{-1}$  (Lin, 2010; Gutiérrez and Meinzer, 1994) and  $2.5\text{--}4.6\text{ mm d}^{-1}$  (Vázquez, 1970; Fuhri-man and Smith, 1951; Goyal and González-Fuentes, 1989; cf. Harmsen, 2003), respectively. The mean soil water uptake of various well-watered (lowland) pastures in northern Puerto Rico was estimated at  $2.8\text{ mm d}^{-1}$  (Van der Molen, 2002), whereas for mature upland (tabonuco) forests, values converge around  $3.0 (\pm 0.1)\text{ mm d}^{-1}$  (Van der Molen, 2002; Wu et al., 2006). Thus, despite the deeper root systems of the forests (cf. Nepstad et al., 1994), mean soil water use for the agricultural crops under consideration, pasture, and forests is quite similar, possibly due to the relatively rainy climate prevailing in Puerto Rico all year round (Calvesbert, 1970). To this, rainfall interception losses (higher for forest) should be added. The best estimates of rainfall interception for mature tabonuco forest ( $\sim 21\%$  of mean annual  $P$ ; Holwerda et al., 2006) translate to ca.  $1.2\text{ mm d}^{-1}$  for an annual  $P$  of  $2000\text{ mm yr}^{-1}$  (i.e. the approximate average rainfall for the 12 study catchments), vs.  $0.9\text{ mm d}^{-1}$  for shaded coffee (Siles et al., 2010) and  $0.2\text{ mm d}^{-1}$  for sugar cane (Leopoldo et al., 1981). Extrapolating the above-mentioned average values to a year, gives mean estimated  $ET_a$  totals for shaded coffee, sugar cane, and pasture of, respectively, ca. 1170, 1355, and  $1020\text{ mm yr}^{-1}$  vs. ca.  $1515\text{ mm yr}^{-1}$  for mature forest. Thus, the full conversion from pasture or crop land to mature forest could potentially change  $Q_{tot}$  by about  $-160\text{ mm yr}^{-1}$  (in the case of sugar cane) to  $-495\text{ mm yr}^{-1}$  (in the case of pasture).

For the catchments examined here a mean modelled change in  $Q_{\text{tot}}$  of  $-86 (\pm 124) \text{ mm yr}^{-1}$  was found (calculated from values of  $\hat{A}_{\text{tot}}$  and  $Q_{\text{tot}}$  listed in Tables 1 and 5, respectively). If it is assumed that this change was solely due to the mean change in forest cover of  $+26\%$ , then the  $+100\%$  change in forest cover would have resulted in a change in  $Q_{\text{tot}}$  of about  $-331 (\pm 478) \text{ mm yr}^{-1}$ . Although the modelled change in  $Q_{\text{tot}}$  lies in between the above estimates based on local field studies of  $ET_a$ , the very high standard deviation of the estimated modelled change in  $Q_{\text{tot}}$  suggests that this agreement may be mere chance. Therefore, the question re-emerges as to why analysis of the impacts of land-cover change on  $Q$  in mesoscale tropical catchments does not confirm the findings of micro-scale experimental studies, which clearly demonstrate a relationship between change in forest area and change in  $Q$  (Bosch and Hewlett, 1982; Bruijnzeel, 1990; Sahin and Hall, 1996; Brown et al., 2005; Jackson et al., 2005).

### 6.5 Potential explanations for the lack of relationships

Upscaling in hydrology is a challenging issue that has received considerable attention (e.g. Peterson, 2000; Rodriguez-Iturbe, 2000; McDonnell et al., 2007; Blöschl and Montanari, 2010). For many studies the lack of a clear relationship between deforestation and change in  $Q$  can be explained by the rapid regeneration of tropical forests, where  $ET_a$  quickly reverts back to its original level and possibly exceeds it for decades (Giambelluca, 2002; Bruijnzeel, 2004; Juhrbandt et al., 2004). However, this explanation does not apply to the present study, since the catchments were exploited as pastures or agricultural fields for a sustained period of time prior to their abandonment and subsequent forest regeneration. Another possible reason for the inconclusive results obtained by many studies is the use of seasonal or annual mean  $Q$  characteristics only, whereas it is generally preferred to use characteristics related to the frequency and magnitude of  $Q$  (Alila et al., 2009, 2010), particularly when evaluating the change in peak flows. Finally, the failure to correct for climatic variability by many studies may also have led to inconclusive or even erroneous outcomes.

The first among the potential explanations for the lack of relationship between land-cover change and  $Q$  characteristics in Puerto Rico is covariance between land cover and climate in space, due to landscape ecology and history (cf. Van Dijk et al., 2012), or in time, due to land-cover changes altering the climate (Van der Molen, 2002; Pielke et al., 2007). Several mesoscale atmospheric modelling studies have produced conflicting results regarding the existence of such a relationship for Puerto Rico (Van der Molen et al., 2006; Comarazamy and González, 2011). The contrasting  $P$  trends reported here for different parts of the island (Fig. 4a) are also unable to provide evidence since similar magnitudes of forest regeneration occur across the island (Fig. 1). Also, because observed  $P$  and PET time series were input to the

HBV-light model, most of the covariance between land-cover change, and  $P$  and PET should have been accounted for in the present analysis.

A second potential explanation is that the land-cover,  $P$ , PET,  $Q$ , and catchment boundary data used here contain more uncertainty than those used in small, commonly well instrumented, experimental studies. Using data for 278 Australian catchments Van Dijk et al. (2012) showed that the introduction of noise to long-term means of observed PET,  $P$ , and  $Q$  reduced the likelihood of detecting a land-cover signal. Here, as different methodologies were employed to derive the land-cover maps for the different years, and because the maps had different spatial resolutions and classification schemes (see Sect. 3.1), it is conceivable that the land-cover time series contained uncertainties. For  $P$  a higher station density is probably desirable, particularly in tropical areas where the uncertainty in estimated catchment-wide  $P$  is exacerbated by the predominantly convective character of  $P$  and the limited spatial extent of individual storm cells (Nieuwolt, 1977; Hastenrath, 1991). Likewise, the PET data should also be viewed with caution, since net radiation, wind speed, and relative humidity, other dominant factors controlling PET magnitude and trends (see McVicar et al., 2012, and references therein), were not explicitly included in its calculation (cf. Eq. 1). The error in the Puerto Rico  $Q$  data is estimated to be 3–6% (Sauer and Meyer, 1992). The cumulative error in annual  $P$ , PET, and  $Q$  was quantified by  $\hat{\sigma}_{\hat{A}}$  (Eq. 9). Even though  $\hat{\sigma}_{\hat{A}}$  does not account for the error in the land-cover data or for drift errors in the  $P$ , PET, and/or  $Q$  data during the study period, values of  $\hat{\sigma}_{\hat{A}}$  already constitute a substantial portion of the variance in  $\hat{A}$  values (the estimated total change in the observed  $Q$ ) for all  $Q$  characteristics (cf. Table 5 and Fig. 7). This suggests that errors in land cover,  $P$ , PET, and  $Q$  data may have restricted the detection of a relationship between land-cover change and  $Q$  characteristics in Puerto Rico. Kundzewicz and Robson (2004) and Chappell and Tych (2012) also suggested that a high degree of observational error may mask the identification of  $Q$  change.

A third potential explanation is that the amount of forest area change in the investigated catchments is less than that of most small catchment experimental studies. Based on small catchment experiments the critical threshold value for forest area change beyond which changes in  $Q$  can be detected is generally assumed to be ca. 20% (e.g. Bosch and Hewlett, 1982). Increases in forest area for the investigated catchments were 2 to 55% (mean 26%), with increases exceeding 20% in six of the twelve catchments. However, forest regeneration progressed from the headwaters to the lowlands (Grau et al., 2003) and by the time the records started (cf. Table 1) most of the headwaters would have been reforested already. Since most  $Q$  is produced in these rainier headwater areas (García-Martínó et al., 1996) the observed

overall change in  $Q$  may be far less than expected on the basis of lumped representations of  $P$  and forest area.

A fourth potential explanation relates to anthropogenic water extractions from the investigated catchments. Irrigation on agricultural fields from local wells may have increased  $ET_a$ , thereby masking the effect of increasing forest cover on  $Q$ . However, irrigation of sugar cane and pineapple in Puerto Rico occurs only on the drier southern coastal plains, and most irrigation water originates from lakes outside the study catchments (Molina-Rivera and Gómez-Gómez, 2008). Therefore, irrigation effects can probably be excluded as a possible explanation. However, water withdrawals associated with urbanization may have confounded the results, possibly causing reductions in  $Q_{bf}$  that are unrelated to changes in forest cover. Although catchments affected by major water extraction were excluded from the analysis (see Sect. 3.2), it is possible that some catchments contain undocumented water intakes.

A fifth potential explanation, proposed by Zhou et al. (2010) and applicable to humid tropical settings, is that  $ET_a$  under such conditions is constrained by PET (i.e. energy limited; Calder, 1998), and therefore the expected increases in  $ET_a$  due to forest regrowth are not evident in the  $Q$  record. However, the interception evaporation component of  $ET_a$  can be well in excess of PET, particularly on mountainous maritime islands (Schellekens et al., 1999; Roberts et al., 2005; Holwerda et al., 2006, 2012; McJannet et al., 2007; Giambelluca et al., 2009). Moreover, an insignificant correlation was obtained between forest cover change and mean  $Q$  during the dry season (January–March;  $Q_{dry}$ ), when PET is not expected to be a limiting factor (Fig. 7g). Hence, this is not seen as a convincing explanation.

Finally, a sixth potential explanation concerns heterogeneity between the study catchments in terms of vegetation cover and land-use history prior to land abandonment (not accounted for by the semi-quantitative classification of the present study), morphology, geology, and soils (McDonnell et al., 2007), influencing the response of  $Q$  to changes in forest cover. In addition, the use of lumped values for the climate variables at the catchment scale may not be valid due to spatial heterogeneity of  $P$ –PET– $Q$  relationships (e.g. García-Martínó et al., 1996; Blöschl et al., 2007; Donohue et al., 2011).

## 7 Conclusions

Although there was considerable variability in the change in  $Q$  across the 12 examined catchments, the correlations between changes in urban or forest area and changes in  $Q$  were insignificant ( $p \geq 0.389$ ) for all four  $Q$  characteristics. Consequently, there is little evidence to support the hypothesis that there is a relationship between the degree of secondary forest regeneration and the change in  $Q$  for the investigated catchments. Nevertheless, most catchments exhibited

decreases in  $Q_{tot}$ , which may be attributable to enhanced vegetation water use associated with forest regeneration.

The most likely reasons for the lack of relationship between land-cover change and  $Q$  characteristics in Puerto Rico include (1) errors in the land cover, climate,  $Q$ , and/or catchment boundary data used in the analysis; (2) generation of  $Q$  is mostly in the rainier headwater areas that were already forested at the start of  $Q$  observations whereas subsequent changes in forest area mainly occurred in the drier lowlands; and (3) heterogeneity in the catchment response. Overall, it seems that the hydrological impacts of forest regeneration in Puerto Rico are currently unpredictable at the mesoscale, and further advances in our understanding are hampered by the quality, availability, and record length of the climatic and flow data. Our findings highlight the importance of catchment-scale analyses using multiple catchments but at the same time confirm the need for additional process studies at all stages of forest regeneration, notably of vegetation water use (both rainfall interception and transpiration) and changes in lowland hillslope hydrological response.

*Acknowledgements.* We wish to dedicate this paper to the memory of our friend, co-author and colleague Fred Scatena who passed away during the last stage of the writing. The authors further wish to thank Miguel Leon (University of Pennsylvania, Philadelphia, USA), Jorge Peña-Arancibia (CSIRO Land and Water, Canberra, Australia), Maarten Waterloo, and Ilja van Meerveld (both from VU University, Amsterdam, the Netherlands) for various forms of support and information. We are also most grateful to Eileen Helmer and Olga Ramos (USDA Forest Service International Institute of Tropical Forestry, Río Piedras, Puerto Rico) for providing the 1951 and 1978 land-cover maps, respectively. Finally, we like to thank Younes Alila (University of British Columbia, Vancouver, Canada) for insightful comments on an earlier version of this paper.

Edited by: N. Romano

## References

- Adnan, N. A. and Atkinson, P. M.: Exploring the impact of climate and land use changes on streamflow trends in a monsoon catchment, *Int. J. Climatol.*, 31, 815–831, 2011.
- Aide, T. M. and Grau, H. R.: Globalization, Migration, and Latin American Ecosystems, *Science*, 305, 1915–1916, 2004.
- Aide, T. M., Zimmerman, J. K., Rosario, M., and Marcano, H.: Forest Recovery in Abandoned Cattle Pastures Along an Elevational Gradient in Northeastern Puerto Rico, *Biotropica*, 28, 537–548, 1996.
- Aide, T. M., Zimmerman, J. K., Pascarella, J. B., Rivera, L., and Marcano-Vega, H.: Forest Regeneration in a Chronosequence of Tropical Abandoned Pastures: Implications for Restoration Ecology, *Restor. Ecol.*, 8, 328–338, 2000.
- Alila, Y., Kuraš, P. K., Schnorbus, M., and Hudson, R.: Forests and floods: A new paradigm sheds light on age-old controversies,

- Water Resour. Res., 45, W08416, doi:10.1029/2009WR009028, 2009.
- Alila, Y., Hudson, R., Kuraś, P. K., Schnorbus, M., and Rasouli, K.: Reply to Comment by Jack Lewis et al. on “Forests and floods: A new paradigm sheds light on age-old controversies”, *Water Resour. Res.*, 46, W05802, doi:10.1029/2009WR009028, 2010.
- Allen, R. G., Pereira, L. S., Raes, D., and Smith, M.: Crop evapotranspiration – guidelines for computing crop water requirements, FAO Irrigation and Drainage Paper 56, <http://www.fao.org/docrep/X0490E/X0490E00.htm>, FAO – Food and Agriculture Organization of the United Nations, Rome, 1998.
- Andréassian, V.: Waters and forests: from historical controversy to scientific debate, *J. Hydrol.*, 291, 1–27, 2004.
- Baker, D. B., Richards, R. P., Loftus, T. T., and Kramer, J. W.: A new flashiness index: characteristics and applications to midwestern rivers and streams, *J. Am. Water Resour. Assoc.*, 40, 503–522, 2007.
- Bergström, S.: Development and application of a conceptual runoff model for Scandinavian catchments, PhD thesis, SMHI Reports RHO 7, Swedish Meteorological and Hydrological Institute (SMHI), Norköping, Sweden, 1976.
- Beven, K. J.: Prophecy, reality and uncertainty in distributed hydrological modelling, *Adv. Water Resour.*, 16, 41–51, 1993.
- Bland, J. M. and Altman, D. G.: Multiple significance tests: the Bonferroni method, *BMJ*, 310, 170, 1995.
- Blöschl, G. and Montanari, A.: Climate change impacts – throwing the dice?, *Hydrol. Process.*, 24, 374–381, 2010.
- Blöschl, G., Ardoin-Bardin, S., Bonell, M., Dorninger, M., Goodrich, D., Gutknecht, D., Matamoros, D., Merz, B., Shand, P., and Szolgay, J.: At what scales do climate variability and land cover change impact on flooding and low flows?, *Hydrol. Process.*, 21, 1241–1247, 2007.
- Bonell, M., Purandara, B. K., Venkatesh, B., Krishnaswamy, J., Archaya, H. A. K., Singh, U. V., Jayakumar, R., and Chappell, N.: The impact of forest use and reforestation on soil hydraulic conductivity in the Western Ghats of India: implications for surface and sub-surface hydrology, *J. Hydrol.*, 391, 47–62, 2010.
- Booij, M. J. and Krol, M. S.: Balance between calibration objectives in a conceptual hydrological model, *Hydrolog. Sci. J.*, 55, 1017–1032, 2010.
- Bosch, J. M. and Hewlett, J. D.: A review of catchment experiments to determine the effect of vegetation changes on water yield and evapotranspiration, *J. Hydrol.*, 55, 3–23, 1982.
- Bradshaw, C. J. A., Sodhi, N. S., Peh, K. S. H., and Brook, B. W.: Global evidence that deforestation amplifies flood risk and severity in the developing world, *Global Change Biol.*, 13, 2379–2395, 2007.
- Brockmann, V. W.: The rural land classification program of Puerto Rico, in: Chap. vii, *Northwestern University Studies in Geography Number 1*, Northwestern University, Evanston, Illinois, 115–161, 1952.
- Brown, A. E., Zhang, L., McMahon, T. A., Western, A. W., and Vertessy, R. A.: A review of paired catchment studies for determining changes in water yield resulting from alterations in vegetation, *J. Hydrol.*, 310, 28–61, 2005.
- Brown, S. and Lugo, A. E.: Tropical secondary forests, *J. Trop. Ecol.*, 6, 1–32, 1990.
- Bruijnzeel, L. A.: (De)forestation and dry season flow in the tropics: a closer look, *J. Trop. Forest Sci.*, 1, 229–243, 1989.
- Bruijnzeel, L. A.: Hydrology of moist tropical forests and effects of conversion: a state-of-knowledge review, <http://unesdoc.unesco.org/images/0009/000974/097405eo.pdf>, UNESCO International Hydrological Programme, Paris, 1990.
- Bruijnzeel, L. A.: Hydrological functions of tropical forests: not seeing the soil for the trees, *Agr. Ecosyst. Environ.*, 104, 185–228, 2004.
- Calder, I. R.: Water use by forests, limits and controls, *Tree Physiol.*, 18, 625–631, 1998.
- Calder, I. R.: Blue revolution: integrated land and water resource management, EarthScan, London, UK, 2005.
- Calvesbert, R. J.: Climate of Puerto Rico and US Virgin Islands, Tech. Rep. Climatography of the United States No. 60-52, US Department of Commerce, Environmental Sciences Administration, 1970.
- Chandler, D. G.: Reversibility of forest conversion impacts on water budgets in tropical karst terrain, *Forest Ecol. Manage.*, 224, 95–103, 2006.
- Chandler, D. G. and Walter, M. F.: Runoff responses among common land uses in the Uplands of Matalom, Leyte, Philippines, *Trans. ASAE*, 41, 1635–1641, 1998.
- Chappell, N. A. and Tych, W.: Identifying step changes in single streamflow and evaporation records due to forest cover change, *Hydrol. Process.*, 26, 100–116, 2012.
- Cheng, G. W.: Forest change: hydrological effects in the upper Yangtze river valley, *Ambio*, 28, 457–459, 1999.
- China, J. D. and Helmer, E. H.: Diversity and composition of tropical secondary forests recovering from large-scale clearing: results from the 1990 inventory in Puerto Rico, *Forest Ecol. Manage.*, 180, 227–240, 2003.
- Comarazamy, D. E. and González, J. E.: Regional long-term climate change (1950–2000) in the midtropical Atlantic and its impacts on the hydrological cycle of Puerto Rico, *J. Geophys. Res.-Atmos.*, 116, D00Q05, doi:10.1029/2010JD015414, 2011.
- Costa, M. H., Botta, A., and Cardille, J. A.: Effects of large-scale changes in land cover on the discharge of the Tocantins River, Southeastern Amazonia, *J. Hydrol.*, 283, 206–217, 2003.
- Crook, K. E., Scatena, F. N., and Pringle, C. M.: Water Withdrawn From the Luquillo Experimental Forest, 2004, Tech. Rep. IITF-GTR-34, [http://www.fs.fed.us/global/iitf/pubs/iitf\\_gtr34.pdf](http://www.fs.fed.us/global/iitf/pubs/iitf_gtr34.pdf), US Department of Agriculture, Forest Service, International Institute of Tropical Forestry, San Juan, Puerto Rico, 2007.
- Daly, C., Neilson, R. P., and Phillips, D. L.: A Statistical-Topographic Model for Mapping Climatological Precipitation over Mountainous Terrain, *J. Appl. Meteorol.*, 33, 140–158, 1994.
- Daly, C., Helmer, E. H., and Quiñones, M.: Mapping the climate of Puerto Rico, Vieques and Culebra, *Int. J. Climatol.*, 23, 1359–1381, 2003.
- Del Mar López, T., Aide, T. M., and Scatena, F. N.: The effect of land use on soil erosion in the Guadiana watershed in Puerto Rico, *Caribbean J. Sci.*, 34, 298–307, 1998.
- DeWalle, D. R., Swistock, B. R., Johnson, T. E., and McGuire, K. J.: Potential effects of climate change and urbanization on mean annual streamflow in the United States, *Water Resour. Res.*, 36, 2655–2664, 2000.
- Dietz, J. L.: Economic History of Puerto Rico, Institutional Change and Political Development, Princeton University Press,

- Princeton, NJ, 1986.
- Dirks, K. N., Hay, J. E., Stow, C. D., and Harris, D.: High-resolution studies of rainfall on Norfolk Island: Part II: Interpolation of rainfall data, *J. Hydrol.*, 208, 187–193, 1998.
- Donohue, R. J., Roderick, M. L., and McVicar, T. R.: Assessing the differences in sensitivities of runoff to changes in climatic conditions across a large basin, *J. Hydrol.*, 406, 234–244, 2011.
- Driessen, T. L. A., Hurkmans, R. T. W. L., Terink, W., Hazenberg, P., Torfs, P. J. J. F., and Uijlenhoet, R.: The hydrological response of the Ourthe catchment to climate change as modelled by the HBV model, *Hydrol. Earth Syst. Sci.*, 14, 651–665, doi:10.5194/hess-14-651-2010, 2010.
- Drigo, R.: Trends and patterns of tropical land use change, in: *Forests, water and people in the humid tropics*, edited by: Bonell, M. and Bruijnzeel, L. A., Cambridge University Press, Cambridge, UK, 9–39, 2005.
- Dyhr-Nielsen, M.: Hydrological effect of deforestation in the Chao Phraya basin in Thailand, in: *Paper Presented at the International Symposium on Tropical Forest Hydrology and Application*, Chiang Mai, Thailand, p. 12, 1986.
- Elkaduwa, W. K. B. and Sakthivadivel, R.: Use of historical data as a decision support tool in watershed management: A case study of the Upper Nilwala Basin in Sri Lanka, *Tech. Rep. 26*, International Water Management Institute, Colombo, Sri Lanka, 1999.
- Ellison, D., Futter, M. N., and Bishop, K.: On the forest cover-water yield debate: from demand- to supply-side thinking, *Global Change Biol.*, 18, 806–820, 2012.
- FAO: Forest and floods, Drowning in fiction or thriving on facts?, *Tech. rep.*, <http://www.fao.org/docrep/008/ae929e/ae929e00.htm>, Food and Agriculture Organization of the United Nations, Rome, 2005.
- FAO: Global Forest Resources Assessment 2005, *Tech. rep.*, <http://www.fao.org/forestry/fra/fra2005/en/>, Food and Agriculture Organization of the United Nations, Rome, 2006.
- Fisher, J. B., Whittaker, R. J., and Malhi, Y.: ET come home: potential evapotranspiration in geographical ecology, *Global Ecol. Biogeogr.*, 20, 1–18, 2011.
- Fox, J., Truong, D. M., Rambo, A. T., Tuyen, N. P., Cuc, L. T., and Leisz, S.: Shifting Cultivation: A New Old Paradigm for Managing Tropical Forests, *BioScience*, 50, 521–528, 2000.
- Fuhrman, D. K. and Smith, R. M.: Conservation and consumptive use of water with Sugar Cane under irrigation in the south coastal area of Puerto Rico, *J. Agr. Univ. Puerto Rico*, 35, 1–45, 1951.
- Garcia, M., Peters-Lidard, C. D., and Goodrich, D. C.: Spatial interpolation of precipitation in a dense gauge network for monsoon storm events in the southwestern United States, *Water Resour. Res.*, 44, W05S13, doi:10.1029/2006WR005788, 2008.
- García-Martinó, A. R., Warner, G. S., Scatena, F. N., and Civco, D. L.: Rainfall, Runoff and Elevation Relationships in the Luquillo Mountains of Puerto Rico, *Caribbean J. Sci.*, 32, 413–424, 1996.
- Giambelluca, T. W.: Hydrology of altered tropical forest, *Hydrol. Process.*, 16, 1665–1669, 2002.
- Giambelluca, T. W., Scholz, F. G., Bucci, S. J., Meinzer, F. C., Goldstein, G., Hoffmann, W. A., Franco, A. C., and Buchert, M. P.: Evapotranspiration and energy balance of Brazilian savannas with contrasting tree density, *Agr. Forest Meteorol.*, 149, 1365–1376, 2009.
- Gleason, B. E.: Data documentation for data set 9101, *Tech. rep.*, National Climatic Data Center, <http://www1.ncdc.noaa.gov/pub/data/documentlibrary/tddoc/td9101.pdf> (last access: November 2012), 2002.
- Goyal, M. R. and González-Fuentes, E. A.: Estimating Water Consumptive Use by sugarcane at four regional sites in Puerto Rico, *J. Agr. Univ. Puerto Rico*, 73, 93–95, 1989.
- Grau, H. R., Aide, T. M., Zimmerman, J. K., Thomlinson, J. R., Helmer, E. H., and Zou, X.: The Ecological Consequences of Socioeconomic and Land-Use Changes in Postagriculture Puerto Rico, *BioScience*, 53, 1159–1168, 2003.
- Gutiérrez, M. V. and Meinzer, F. C.: Estimating water use and irrigation requirements of coffee in Hawaii, *J. Am. Soc. Hortic. Sci.*, 119, 652–657, 1994.
- Hargreaves, G. H. and Samani, Z. A.: Reference crop evapotranspiration from temperature, *Appl. Eng. Agr.*, 1, 96–99, 1985.
- Harmsen, E. W.: Fifty years of crop evapotranspiration studies in Puerto Rico, *J. Soil Water Conserv.*, 58, 214–223, 2003.
- Harto, A. B., Kondoh, A., and Sakura, Y.: The Effect of Land Use Changes on the Water Balance in the Ciliwung-Cisadane Catchment, West Java, Indonesia, in: *Proceedings of the International Symposium on Hydrology, Water Resources and Environment, Development and Management in South East Asia and the Pacific*, Taegu, Republic of Korea, 121–132, 1998.
- Hassler, S. K., Zimmermann, B., van Breugel, M., Hall, J. S., and Elsenbeer, H.: Recovery of saturated hydraulic conductivity under secondary succession on former pasture in the humid tropics, *Forest Ecol. Manage.*, 261, 1634–1642, 2011.
- Hastenrath, S.: *Climate dynamics of the tropics*, Kluwer Academic Publishers, Boston, 1991.
- Hecht, S.: The new rurality: Globalization, peasants and the paradoxes of landscapes, *Land Use Policy*, 27, 161–169, 2010.
- Helmer, E. H.: Forest conservation and land development in Puerto Rico, *Landscape Ecol.*, 19, 29–40, 2004.
- Helmer, E. H. and Ruefenacht, B.: Cloud-Free Satellite Image Mosaics with Regression Trees and Histogram Matching, *Photogramm. Eng. Remote Sens.*, 71, 1079–1089, 2005.
- Hijmans, R. J., Cameron, S. E., Parra, J. L., Jones, P. G., and Jarvis, A.: Very high resolution interpolated climate surfaces for global land areas, *Int. J. Climatol.*, 25, 1965–1978, 2005.
- Hölscher, D., Mackensen, J., and Roberts, J. M.: Forest recovery in the humid tropics: changes in vegetation structure, nutrient pools and the hydrological cycle, in: *Forest, water and people in the humid tropics*, edited by: Bonell, M. and Bruijnzeel, L. A., Chap. 25, Cambridge University Press, UK, 622–651, 2005.
- Holwerda, F., Scatena, F. N., and Bruijnzeel, L. A.: Throughfall in a Puerto Rican lower montane rain forest: a comparison of sampling strategies, *J. Hydrol.*, 327, 592–602, 2006.
- Holwerda, F., Bruijnzeel, L. A., Scatena, F. N., Vugts, H. F., and Meesters, A. G. C. A.: Wet canopy evaporation from a Puerto Rican lower montane rain forest: The importance of realistically estimated aerodynamic conductance, *J. Hydrol.*, 414–415, 1–15, 2012.
- Ilstedt, U., Malmer, A., Verbeeten, E., and Murdiyasar, D.: The effect of afforestation on water infiltration in the tropics: A systematic review and meta-analysis, *Forest Ecol. Manage.*, 251, 45–51, 2007.
- Jackson, R. B., Jobbágy, E. G., Avissar, R., Baidya Roy, S., Barrett, D., Cook, C. W., Farley, K. A., le Maitre, D. C., McCarl, B. A.,



- and Murray, B. C.: Trading water for carbon with biological carbon sequestration, *Science*, 310, 1944–1947, 2005.
- Juhrbandt, J., Leuschner, C., and Hölscher, D.: The relationship between maximal stomatal conductance and leaf traits in eight Southeast Asian early successional tree species, *Forest Ecol. Manage.*, 202, 245–256, 2004.
- Kendall, M. G.: *Rank Correlation Methods*, Griffin, London, 1975.
- Kennaway, T. and Helmer, E. H.: The Forest Types and Ages Cleared for Land Development in Puerto Rico, *GISci. Remote Sens.*, 44, 356–382, 2007.
- Kundzewicz, Z. W. and Robson, A. J.: Change detection in hydrological records – a review of the methodology, *Hydrolog. Sci. J.*, 49, 1–19, 2004.
- Kurtz, A. C., Lugolobi, F., and Salvucci, G.: Germanium-silicon as a flow path tracer: Application to the Río Icacos watershed, *Water Resour. Res.*, 47, W06516, doi:10.1029/2010WR009853, 2011.
- Landell-Mills, N. and Porras, I. T.: Silver Bullet or Fools' Gold: A global review of markets for forest environmental services and their impact on the poor, Tech. rep., International Institute for Environment and Development, London, UK, 2002.
- Larsen, M. C.: Analysis of 20th century rainfall and streamflow to characterize drought and water resources in Puerto Rico, *Phys. Geogr.*, 21, 494–521, 2000.
- Lele, S.: Watershed services of tropical forests: from hydrology to economic valuation to integrated analysis, *Curr. Opin. Environ. Sustain.*, 1, 148–155, 2009.
- Leopoldo, P. R., de Pádua Sousa, A., and Filho, S. T.: Interceptação da água de Chuva em Cultura de Cana-de-açúcar, *Brasil Açucareiro*, 98, 9–16, 1981.
- Lepers, E., Lambin, E. F., Janetos, A. C., DeFries, R. S., Achard, F., Ramankutty, N., and Scholes, R. J.: A Synthesis of Information on Rapid Land-cover Change for the Period 1981–2000, *BioScience*, 55, 115–124, 2005.
- Lin, B. B.: The role of agroforestry in reducing water loss through soil evaporation and crop transpiration in coffee agroecosystems, *Agr. Forest Meteorol.*, 140, 510–518, 2010.
- Linhares, C. A.: Influência do desmatamento na dinâmica da resposta hidrológica na bacia do Ji-Paraná, Ph.D. thesis, Brazilian Institute for Space Research, Brazil, 2005.
- Little, C., Lara, A., McPhee, J., and Urrutia, R.: Revealing the impact of forest exotic plantations on water yield in large scale watersheds in South-Central Chile, *J. Hydrol.*, 374, 162–170, 2009.
- Lu, G. Y. and Wong, D. W.: An adaptive inverse-distance weighting spatial interpolation technique, *Comput. Geosci.*, 34, 1044–1055, 2007.
- Lu, J., Sun, G., McNulty, S. G., and Amatya, D. M.: A Comparison of Six Potential Evapotranspiration Methods for Regional Use in the Southeastern United States, *J. Am. Water Resour. Assoc.*, 41, 621–633, 2005.
- Lugo, A. E. and Helmer, E. H.: Emerging forests on abandoned land: Puerto Rico's new forests, *Forest Ecol. Manage.*, 190, 145–161, 2004.
- Lugo, A. E. and Scatena, F. N.: Ecosystem-level properties of the Luquillo Experimental Forest with emphasis on the Tabonuco forest, in: *Tropical Forests: Management and Ecology*, edited by: Lugo, A. E. and Lowe, C., vol. 112 of *Ecological Studies*, pp. Springer-Verlag, New York, 59–108, 1995.
- Madsen, H.: Automatic calibration of a conceptual rainfall-runoff model using multiple objectives, *J. Hydrol.*, 235, 276–288, 2000.
- Mann, H. B.: *Nonparametric Tests Against Trend*, *Econocharakteristica*, 13, 245–259, 1945.
- McDonnell, J. J., Sivapalan, M., Vaché, K., Dunn, S., Grant, G., Haggerty, R., Hinz, C., Hooper, R., Kirchner, J., Roderick, M. L., Selker, J., and Weiler, M.: Moving beyond heterogeneity and process complexity: A new vision for watershed hydrology, *Water Resour. Res.*, 43, W07301, doi:10.1029/2006WR005467, 2007.
- McJannet, D., Wallace, J., Fitch, P., Disher, M., and Reddell, P.: Water balance of tropical rainforest canopies in north Queensland, Australia, *Hydrol. Process.*, 21, 3473–3484, 2007.
- McKay, M. D., Conover, W. J., and Beckman, R. J.: A comparison of three methods for selecting values of input variables in the analysis of output from a computer code, *Technocharacteristics*, 21, 239–245, 1979.
- McMahon, G., Bales, J. D., Coles, J. F., Giddings, E. M. P., and Zappia, H.: Use of stage data to characterize hydrologic conditions in an urbanizing environment, *J. Am. Water Resour. Assoc.*, 39, 1529–1546, 2003.
- McVicar, T. R., Roderick, M. L., Donohue, R. J., and Van Niel, T. G.: Less bluster ahead? Ecohydrological implications of global trends of terrestrial near-surface wind speeds, *Ecohydrology*, 5, 381–388, 2012.
- Metropolis, N.: *The Beginning of the Monte Carlo Method*, *Los Alamos Sci.*, 15, 125–130, 1987.
- Molina-Rivera, W. L. and Gómez-Gómez, F.: Estimated Water Use in Puerto Rico, 2005, Tech. Rep. Open-File Report 2008-1286, <http://pubs.usgs.gov/of/2008/1286/>, US Geological Survey, Washington DC, 2008.
- Monteith, J. L.: Evaporation and the Environment, in: *Symposium of the Society of Experimental Biology* no. 19, Swansea, UK, 245–269, 1965.
- Nash, J. E. and Sutcliffe, J. V.: River Flow Forecasting through Conceptual Models part I – A Discussion of Principles, *J. Hydrol.*, 10, 282–290, 1970.
- Nepstad, D. C., de Carvalho, C. R., Davidson, E. A., Jipp, P. H., Lefebvre, P. A., Negreiros, G. H., Gustavo, H., da Silva, E. D., Stone, T. A., Trumbore, S. E., and Vieira, S.: The role of deep roots in the hydrological and carbon cycles of Amazonian forests and pastures, *Nature*, 372, 666–669, 1994.
- Nieuwolt, S.: *Tropical climatology, an introduction to the climates of the low latitudes*, John Wiley and Sons, New York, 1977.
- Olcott, P. G.: Puerto Rico and the U. S. Virgin Islands, in: *Ground water atlas of the United States*, chap. HA 730-N, [http://pubs.usgs.gov/ha/ha730/ch\\_n/index.html](http://pubs.usgs.gov/ha/ha730/ch_n/index.html), US Geological Survey, Washington DC, 1999.
- Parés-Ramos, I. K., Gould, W. A., and Aide, T. M.: Agricultural Abandonment, Suburban Growth, and Forest Expansion in Puerto Rico between 1991 and 2000, *Ecol. Soci.*, 13, 1, 2008.
- Peña-Arancibia, J. L., Van Dijk, A. I. J. M., Mulligan, M., and Bruijnzeel, L. A.: The role of climatic and terrain attributes in estimating baseflow recession in tropical catchments, *Hydrol. Earth Syst. Sci.*, 14, 2193–2205, doi:10.5194/hess-14-2193-2010, 2010.
- Peña-Arancibia, J. L., Van Dijk, A. I. J. M., Guerschman, J. P., Mulligan, M., Bruijnzeel, L. A., and McVicar, T. R.: Detecting changes in streamflow after partial woodland clearing in two large catchments in the seasonal tropics, *J. Hydrol.*, 416, 60–71, 2012.

- Peterson, G. D.: Scaling Ecological Dynamics: Self-Organization, Hierarchical Structure, and Ecological Resilience, *Climatic Change*, 44, 291–309, 2000.
- Phillips, C. B. and Scatena, F. N.: Flashiness Indices for urban and rural streams in Puerto Rico, in: AWRA 2010 Summer Specialty Conference, [http://www.sas.upenn.edu/lczodata/sites/www.sas.upenn.edu/lczodata/files/ColinPhillips\\_AWRA20Flash.pdf](http://www.sas.upenn.edu/lczodata/sites/www.sas.upenn.edu/lczodata/files/ColinPhillips_AWRA20Flash.pdf), San Juan, Puerto Rico, 2010.
- Pielke, R. A., Adegoke, J., Beltrán-Przekurat, A., Hiemstra, C. A., Lin, J., Nair, U. S., Niyogi, D., and Nobis, T. E.: An overview of regional land-use and land-cover impacts on rainfall, *Tellus B*, 59, 587–601, 2007.
- Plesca, I., Timbe, E., Exbrayat, J. F., Windhorst, D., Kraft, P., Crespo, P., Vachéa, K. B., Frede, H. G., and Breuer, L.: Model intercomparison to explore catchment functioning: Results from a remote montane tropical rainforest, *Ecol. Model.*, 239, 3–13, 2012.
- Qian, W. C.: Effects of deforestation on flood characteristics with particular reference to Hainan island, China, in: International Association of Hydrological Sciences Publication 140, 249–258, 1983.
- Quenouille, M. H.: Notes on bias in estimation, *Biometrika*, 43, 353–360, 1956.
- Ramírez, A., De Jesús-Crespo, R., Martínó-Cardona, D. M., Martínez-Rivera, N., and Burgos-Caraballo, S.: Urban streams in Puerto Rico: what can we learn from the tropics?, *J. N. Am. Benthol. Soc.*, 28, 1070–1079, 2009.
- Ramos, O. M. and Lugo, A. E.: Mapa de la Vegetación de Puerto Rico, *Acta Científica*, 8, 63–66, 1994.
- Refsgaard, J. C.: Parameterisation, calibration and validation of distributed hydrological models, *J. Hydrol.*, 198, 69–97, 1997.
- Rijsdijk, A., Bruijnzeel, L. A., and Sutoto, C. K.: Runoff and sediment yield from rural roads, trails and settlements in the upper Konto catchment, East Java, Indonesia, *Geomorphology*, 87, 28–37, 2007.
- Roberts, J. M., Gash, J. H. C., Tani, M., and Bruijnzeel, L. A.: Controls on evaporation in lowland tropical rainforest, in: *Forests, water and people in the humid tropics*, edited by: Bonell, M. and Bruijnzeel, L. A., Cambridge University Press, Cambridge, UK, 287–313, 2005.
- Rodriguez, D. A., Tomasella, J., and Linhares, C.: Is the forest conversion to pasture affecting the hydrological response of Amazonian catchments? Signals in the Ji-Paraná Basin, *Hydrol. Process.*, 24, 1254–1269, 2010.
- Rodriguez-Iturbe, I.: Ecohydrology: A Hydrologic Perspective of Climate-Soil-Vegetation Dynamics, *Water Resour. Res.*, 36, 3–9, 2000.
- Sahin, V. and Hall, M. J.: The effects of afforestation and deforestation on water yields, *J. Hydrol.*, 178, 293–309, 1996.
- Sauer, V. B. and Meyer, R. W.: Determination of error in individual discharge measurements, Open-file report 92-144, <http://pubs.usgs.gov/of/1992/ofr92-144/>, US Geological Survey, Washington DC, 1992.
- Schellekens, J., Scatena, F. N., Bruijnzeel, L. A., and Wickel, A. J.: Modelling rainfall interception by a lowland maritime tropical rain forest in northeastern Puerto Rico, *J. Hydrol.*, 225, 168–184, 1999.
- Schellekens, J., Bruijnzeel, L. A., Scatena, F. N., Bink, N. J., and Holwerda, F.: Evaporation from a tropical rain forest, Luquillo Experimental Forest, eastern Puerto Rico, *Water Resour. Res.*, 36, 2183–2196, 2000.
- Schellekens, J., Scatena, F. N., Bruijnzeel, L. A., Van Dijk, A. I. J. M., Groen, M. M. A., and van Hogezaand, R. J. P.: Stormflow generation in a small rainforest catchment in the Luquillo Experimental Forest, Puerto Rico, *Hydrol. Process.*, 18, 505–530, 2004.
- Schumm, S. A.: Evolution of drainage systems and slopes in badlands at Perth Amboy, *Geol. Soc. Am. Bull.*, 67, 597–646, 1956.
- Scott, D. F., Bruijnzeel, L. A., and Mackensen, J.: The hydrological and soil impacts of forestation in the tropics, in: *Forests, water and people in the humid tropics*, edited by: Bonell, M. and Bruijnzeel, L. A., Cambridge University Press, Cambridge, UK, 622–651, 2005.
- Seibert, J.: Estimation of parameter uncertainty in the HBV model, *Nord. Hydrol.*, 28, 247–262, 1997.
- Seibert, J.: Regionalisation of parameters for a conceptual rainfall-runoff model, *Agr. Forest Meteorol.*, 98–99, 279–293, 1999.
- Seibert, J.: HBV light, version 2 user's manual, [http://people.su.se/~jseib/HBV/HBV\\_manual\\_2005.pdf](http://people.su.se/~jseib/HBV/HBV_manual_2005.pdf), Stockholm University, Stockholm, Sweden, 2005.
- Sen, P. K.: Estimates of the regression coefficient based on Kendall's tau, *J. Am. Stat. Assoc.*, 63, 1379–1389, 1968.
- Shepard, D.: A two-dimensional interpolation function for irregularly-spaced data, in: *ACM '68 Proceedings of the 1968 23rd ACM National Conference*, New York, USA, 517–524, 1968.
- Siles, P., Vaast, P., Dreyer, E., and Harmand, J.: Rainfall partitioning into throughfall, stemflow and interception loss in a coffee (*Coffea arabica* L.) monoculture compared to an agroforestry system with *Inga densiflora*, *J. Hydrol.*, 395, 39–48, 2010.
- Silveira, L. and Alonso, J.: Runoff modifications due to the conversion of natural grasslands to forests in a large basin in Uruguay, *Hydrol. Process.*, 23, 320–329, 2009.
- Smith, R. M. and Abruña, A.: Soil and water conservation research in Puerto Rico, 1938 to 1947, Bulletin no. 124, University of Puerto Rico Agricultural Experiment Station, Rio Piedras, Puerto Rico, 1955.
- Sperna Weiland, F. C., Tisseuil, C., Dürr, H. H., Vrac, M., and van Beek, L. P. H.: Selecting the optimal method to calculate daily global reference potential evaporation from CFSR reanalysis data for application in a hydrological model study, *Hydrol. Earth Syst. Sci.*, 16, 983–1000, doi:10.5194/hess-16-983-2012, 2012.
- Steele-Dunne, S., Lynch, P., McGrath, R., Semmler, T., Wang, S., Hanafin, J., and Nolan, P.: The impacts of climate change on hydrology in Ireland, *J. Hydrol.*, 356, 28–45, 2008.
- Sun, G., Zhou, G., Zhang, Z., Wei, X., McNulty, S. G., and Vose, J. M.: Potential water yield reduction due to forestation across China, *J. Hydrol.*, 328, 548–558, 2006.
- Sun, G., Zuo, C., Liu, S., Liu, M., McNulty, S. G., and Vose, J. M.: Watershed evapotranspiration increased due to changes in vegetation composition and structure under a subtropical climate, *J. Am. Water Resour. Assoc.*, 44, 1164–1175, 2008.
- Te Linde, A. H., Aerts, J. C. J. H., Hurkmans, R. T. W. L., and Eberle, M.: Comparing model performance of two rainfall-runoff models in the Rhine basin using different atmospheric forcing data sets, *Hydrol. Earth Syst. Sci.*, 12, 943–957, doi:10.5194/hess-12-943-2008, 2008.

- Thiessen, A. H.: Precipitation for large areas, *Mon. Weather Rev.*, 39, 1082–1089, 1911.
- Thomlinson, J. R., Serrano, M. I., del Mar López, T., Aide, T. M., and Zimmerman, J. K.: Land-Use Dynamics in a Post-Agricultural Puerto Rican Landscape (1936–1988), *Biotropica*, 28, 525–536, 1996.
- Trajkovic, S.: Hargreaves versus Penman-Monteith under Humid Conditions, *J. Irrig. Drain. Eng.*, 133, 38–42, 2007.
- Trimble, S. W., Weirich, F. H., and Hoag, B. L.: Reforestation and the Reduction of Water Yield on the Southern Piedmont since Circa 1940, *Water Resour. Res.*, 23, 425–437, 1987.
- Tukey, J. W.: Bias and confidence in not-quite large samples, *Ann. Math. Stat.*, 29, 614, 1958.
- Van der Molen, M. K.: Meteorological impacts of land use change in the maritime tropics, Ph.D. thesis, VU University Amsterdam, 2002.
- Van der Molen, M. K., Dolman, A. J., Waterloo, M. J., and Bruijnzeel, L. A.: Climate is affected more by maritime than by continental land use change: A multiple scale analysis, *Global Planet. Change*, 54, 128–149, 2006.
- Van der Weert, R.: Hydrological conditions in Indonesia, Delft Hydraulics, Delft, The Netherlands, 1994.
- Van Dijk, A. I. J. M.: Climate and terrain factors explaining streamflow response and recession in Australian catchments, *Hydrol. Earth Syst. Sci.*, 14, 159–169, doi:10.5194/hess-14-159-2010, 2010.
- Van Dijk, A. I. J. M., van Noordwijk, M., Calder, I. R., Bruijnzeel, L. A., Schellekens, J., Chappell, N. A., Smyle, J., and Aylward, B.: Forest-flood relation still tenuous – comment on “Global evidence that deforestation amplifies flood risk and severity in the developing world” by C. J. A. Bradshaw, N. S. Sodi, K. S.-H. Peh and B. W. Brook, *Global Change Biol.*, 15, 110–115, 2009.
- Van Dijk, A. I. J. M., Peña-Arancibia, J. L., and (Sampurno) Bruijnzeel, L. A.: Land cover and water yield: inference problems when comparing catchments with mixed land cover, *Hydrol. Earth Syst. Sci.*, 16, 3461–3473, doi:10.5194/hess-16-3461-2012, 2012.
- Vázquez, R.: Water requirements of sugarcane under irrigation in Lajas Valley, Puerto Rico, Bulletin no. 224, University of Puerto Rico Agricultural Experiment, Río Piedras, Puerto Rico, 1970.
- Waterloo, M. J., Schellekens, J., Bruijnzeel, L. A., and Rawaqa, T. T.: Changes in catchment runoff after harvesting and burning of a *Pinus caribaea* plantation in Viti Levu, Fiji, *Forest Ecol. Manage.*, 251, 31–44, 2007.
- Weaver, P. L., Birdsey, R. A., and Lugo, A. E.: Soil Organic Matter in Secondary Forests of Puerto Rico, *Biotropica*, 19, 17–23, 1987.
- Wesseling, C. G., Karssenbergh, D. J. A. N., Burrough, P. A., and Deursen, W.: Integrating dynamic environmental models in GIS: the development of a Dynamic Modelling language, *Trans. GIS*, 1, 40–48, 1996.
- Wilcox, B. P. and Huang, Y.: Woody plant encroachment paradox: Rivers rebound as degraded grasslands convert to woodlands, *Geophys. Res. Lett.*, 37, L07402, doi:10.1029/2009GL041929, 2010.
- Wilk, J., Andersson, L., and Plermkamon, V.: Hydrological impacts of forest conversion to agriculture in a large river basin in north-east Thailand, *Hydrol. Process.*, 15, 2729–2748, 2001.
- Wu, W., Hall, C. A. S., Scatena, F. N., and Quackenbush, L. J.: Spatial modelling of evapotranspiration in the Luquillo experimental forest of Puerto Rico using remotely-sensed data, *J. Hydrol.*, 328, 733–752, 2006.
- Wu, W., Hall, C. A. S., and Scatena, F. N.: Modelling the impact of recent land-cover changes on the stream flows in northeastern Puerto Rico, *Hydrol. Process.*, 21, 2944–2956, 2007.
- Xu, J., Fox, J., Lu, X., Podger, N., Leisz, S., and Ai, X.: Effects of Swidden Cultivation, State Policies, and Customary Institutions on Land Cover in a Hani Village, Yunnan, China, *Mount. Res. Develop.*, 19, 123–132, 1999.
- Yu, P., Yang, T., and Chen, S.: Comparison of uncertainty analysis methods for a distributed rainfall-runoff model, *J. Hydrol.*, 244, 43–59, 2001.
- Zhang, B., Yang, Y., and Zepp, H.: Effect of vegetation restoration on soil and water erosion and nutrient losses of a severely eroded clayey Plinthudult in southeastern China, *Catena*, 57, 77–90, 2004.
- Zhou, G. Y., Morris, J. D., Yan, J. H., Yu, Z. Y., and Peng, S. L.: Hydrological Impacts of Reafforestation with Eucalypts and Indigenous Species: A Case Study in Southern China, *Forest Ecol. Manage.*, 167, 209–222, 2002.
- Zhou, G., Wei, X., Luo, Y., Zhang, M., Li, Y., Qiao, Y., Lui, H., and Wang, C.: Forest recovery and river discharge at the regional scale of Guangdong Province, China, *Water Resour. Res.*, 46, W09503, doi:10.1029/2009WR008829, 2010.
- Ziegler, A. D., Giambelluca, T. W., Tran, L. T., Vana, T. T., Nullet, M. A., Fox, J., Duc Vien, T., Pinthong, J., Maxwell, J. F., and Evett, S.: Hydrological consequences of landscape fragmentation in mountainous northern Vietnam: evidence of accelerated overland flow generation, *J. Hydrol.*, 287, 124–146, 2004.
- Zimmermann, B., Elsenbeer, H., and De Moraes, J. M.: The influence of land-use changes on soil hydraulic properties: Implications for runoff generation, *Forest Ecol. Manage.*, 222, 29–38, 2006.
- Zimmermann, B., Papritz, A., and Elsenbeer, H.: Asymmetric response to disturbance and recovery: Changes of soil permeability under forest-pasture-forest transitions, *Geoderma*, 159, 209–215, 2010.
- Zou, X. and Gonzalez, G.: Changes in earthworm density and community structure during secondary succession in abandoned tropical pastures, *Soil Biol. Biochem.*, 29, 627–629, 1997.