

Changes in land cover, rainfall and stream flow in Upper Gilgel Abbay catchment, Blue Nile basin – Ethiopia

T. H. M. Rientjes¹, A. T. Haile¹, E. Kebede², C. M. M. Mannaerts¹, E. Habib³, and T. S. Steenhuis⁴

¹Department of Water Resources Faculty of Geo-information Science and Earth Observation (ITC) University of Twente, P.O. Box 6, 7500AA, Enschede, The Netherlands

²SNNPR Water Resources Development, Bureau Awassa, P.O. Box 925, Awassa, Ethiopia

³Department of Civil Engineering, University of Louisiana at Lafayette, Lafayette, LA 70504, USA

⁴Biological and Environmental Engineering, Cornell University, Ithaca, NY 14853, USA

Received: 10 August 2010 – Published in Hydrol. Earth Syst. Sci. Discuss.: 15 December 2010

Revised: 13 May 2011 – Accepted: 10 June 2011 – Published: 27 June 2011

Abstract. In this study we evaluated changes in land cover and rainfall in the Upper Gilgel Abbay catchment in the Upper Blue Nile basin and how changes affected stream flow in terms of annual flow, high flows and low flows. Land cover change assessment was through classification analysis of remote sensing based land cover data while assessments on rainfall and stream flow data are by statistical analysis. Results of the supervised land cover classification analysis indicated that 50.9 % and 16.7 % of the catchment area was covered by forest in 1973 and 2001, respectively. This significant decrease in forest cover is mainly due to expansion of agricultural land.

By use of a change detection procedure, three periods were identified for which changes in rainfall and stream flow were analyzed. Rainfall was analyzed at monthly base by use of the Mann-Kendall test statistic and results indicated a statistically significant, decreasing trend for most months of the year. However, for the wet season months of June, July and August rainfall has increased. In the period 1973–2005, the annual flow of the catchment decreased by 12.1 %. Low flow and high flow at daily base were analyzed by a low flow and a high flow index that is based on a 95 % and 5 % exceedance probability. Results of the low flow index indicated decreases of 18.1 % and 66.6 % for the periods 1982–2000 and 2001–2005 respectively. Results of high flows indicated an increase of 7.6 % and 46.6 % for the same periods. In this study it is concluded that over the period 1973–2005 stream flow has changed in the Gilgel Abbay catchment by changes in land cover and changes in rainfall.

1 Introduction

Evaluating the effects of land cover changes on hydrological regimes has been a subject of ongoing research (see Bosch and Hewlett, 1982; Andréassian, 2004; Cosandey et al., 2005). Understanding these effects is of key importance since in many regions a rapid increase in population density often causes changes in land use and cover where forests and wetlands are converted to agricultural land. Studies by Bewket and Sterk (2005) and Lørup et al. (1998) showed that land cover changes cause changes in hydrological regimes that affect the stream flow volume but also the pattern of stream flow and peak flows.

Many studies that address the effect of land cover changes on hydrological regimes were undertaken in experimental catchments of small scale (<1 km²) (e.g. Bosch and Hewlett, 1982; Troendle and King, 1987; Lavabre et al., 1993; Iroumé et al., 2005; Guillemette et al., 2005). However, water resources management often requires information on catchments of regional (>1000 km²) or larger scale. Changes of land cover typically is a phenomenon at local or plot scale (e.g. 1 ha–1 km²) so the impact of any disturbance will be minimal when catchments are of regional or larger scale. Therefore, when considering larger scale catchments, changes of land cover should be observable over larger domains and in essence is the premise to assess hydrological impacts of such changes. Some studies on catchments of regional scale showed that the expansion of agricultural land by deforestation resulted in an increase in annual stream flow (e.g. Bewket and Sterk, 2005; Costa et al., 2003; Siriwardena et al., 2006), an increase in high flow (e.g. Mati et al., 2008; Costa et al., 2003) and an increase in base flow (e.g. Zhang and Schilling, 2006). However, Kashaigili (2008) reported a



Correspondence to: T. H. M. Rientjes
(t.h.m.rientjes@utwente.nl)

decrease in base flow while Wilk et al. (2001) were unable to detect any change in hydrological regimes despite a significant change in land cover by deforestation. This indicates that results of past studies are not consistent but clear reasoning why differences occur is not trivial. While the catchment hydrologic behavior by itself is a function of climatic and topographic settings, soil properties and land cover types, it is unclear how changes in (one of) these settings affect the catchment hydrological behavior and related catchment responses.

In this study, we analyzed changes in the land cover and rainfall and the hydrological regimes of the Upper Gilgel Abbay catchment with size of approximately 1656 km². The catchment is located in the Lake Tana basin that is the source basin of the Blue Nile River. Gilgel Abbay is a densely populated catchment and is part of the larger Amhara region with annual population growth of 2.67 % (ANRS, 2009). This growth has led to increased and intensified human activities that resulted in deforestation, overgrazing, land degradation and expansion of agricultural land. During various field visits in the period 2005–2010 we observed that water erosion is pronounced with deeply incised gullies (>25 m) in the area where forests were cleared. We also observed that deforestation is a day-to-day activity of the people that use the wood for heating and cooking. The catchment is characterized by a rainfall regime with a pronounced dry and wet season with very high rainfall intensities (>20 mm h⁻¹) and high variability in space and time dimension (see Haile et al., 2009, 2010, 2011). During our field visits we observed that high rainfall intensity and Hortonian overland flow affected the sheet and rill erosion processes while saturation excess overland flow was observed at overland flow source areas at the down side of hill slopes and in erosion gullies.

In literature only few efforts are reported on assessments on changes in land cover and rainfall in the Lake Tana basin and their effect on the hydrological regime. For studies in the Lake Tana basin we refer to Solomon et al. (2010) who focused on hydrologic impacts of deforestation in the Koga catchment that directly neighbors the Gilgel Abbay catchment and to Tesemma et al. (2010) who focused on trends in rainfall and runoff for selected areas in the Blue Nile. Part of the latter study focused on the Lake Tana basin area but establishing clear effects of land use changes was not possible since hydrologic assessments focused on the outflow of Lake Tana instead of stream flows from catchments that drain to the lake. Moreover the authors suggest that from the onset of the construction of the Chara Chara weir in 1996, low flows and high flows are affected and thus flows not necessarily reflect the natural flow conditions (see Wale et al., 2009; Rientjes et al., 2011 for further discussion). We note that our work differs from Solomon et al. (2010) since we apply supervised satellite based land cover classification for the Upper Gilgel Abbay catchment as compared to unsupervised classification to the Koga catchment that is much smaller. Also, we use daily observations of the hydro-meteorological

time series for our analysis instead of the monthly maximum and minimum in Solomon et al. (2010).

Recent studies with focus on the hydrology of the Gilgel Abbay catchment are reported by Abdo et al. (2009), Setegn et al. (2010) and Uhlenbrook et al. (2010). Abdo et al. (2009) showed that climate change may affect the hydrological regime of the Gilgel Abbay catchment with a lower rainfall amount prospected for the year 2080. In Setegn et al. (2010) attention is on uncertainty analysis of hydrological modeling by the Soil and Water Assessment Tool (SWAT) (Arnold et al., 1998) but issues of land cover change are ignored. In Uhlenbrook et al. (2010) attention is on hydrologic modeling of Koga catchment and the Gilgel Abbay catchment that was partitioned in the Upper Gilgel Abbay that is gauged and the lower part that is ungauged. Modeling was by the “HBV light” approach (see Seibert, 2002) and focused on issues of model complexity, model transferability and simulating high flows and low flows. Further work in the Gilgel Abbay catchment is reported in Wale et al. (2009) and Rientjes et al. (2011) who assessed the water balance closure term of Lake Tana by lake level simulation and application of a regional model for stream flow simulation from ungauged basins. Uhlenbrook et al. (2010) and Rientjes et al. (2011) paid much attention to the correction of hydro meteorological time series. For more extensive reviews on research in the Gilgel Abbay reference is made to the latter two works.

Objectives of this study are to evaluate how land cover of the Upper Gilgel Abbay has changed over the past 3 decades (1973–2001) and to evaluate how changes may have affected the hydrological regime. The work focuses on monthly time scales to identify trends and to evaluate possible long-term impacts but also focuses on high flow and low flow indices to evaluate if extremes in discharges are affected. The present study has large societal and economic relevance since the catchment is situated in the source basin of the Upper Blue Nile basin and since the relatively dense population largely depends on agricultural production.

2 Study area and data sources

Gilgel Abbay is the largest contributor to the inflow of Lake Tana (see Rientjes et al., 2011) which is considered the source lake of the Upper Blue Nile River. The study area covers the upper part of the Gilgel Abbay catchment that is situated upstream of the gauging station at Wotet Abbay as shown in Fig. 1.

The Upper Gilgel Abbay is located between 10°56′ to 11°22′ N latitude and 36°44′ to 37°03′ E longitudes. The surface area of the catchment is approximately 1656 km² while the longest flow path of the river is 84 km. The Shuttle Radar Topography Mission (SRTM) digital elevation model (DEM) shows that the elevation of the Upper Gilgel Abbay varies from 1934 m to 3528 m a.m.s.l. Generally, the main wet season covers the period June to September while the main dry

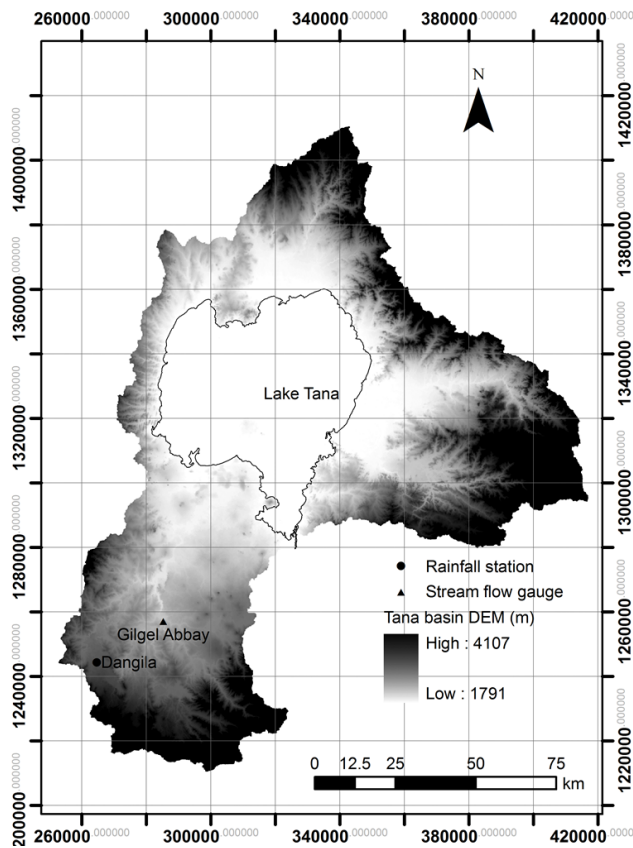


Fig. 1. Lake Tana catchment.

season covers the period October to May. Haile et al. (2009) showed that the spatial distribution of rainfall amount has a decreasing trend from south to north.

The analysis on the changes of land cover is based on three remote sensing images that were acquired in 1973, 1986 and 2001. Details of the image characteristics and the remote sensing sensors are presented in Sect. 3.1. Stream flow data for the Upper Gilgel Abbay is made available by the Ministry of Water Resources (MoWR) in Ethiopia. Data is on daily base and covers the period 1973–2005. Rainfall time series data from some 9 weather stations is made available by the National Meteorological Agency (NMA) in Ethiopia and series are analyzed for completeness for the same period. This resulted in the selection of time series of Dangila station which is located in the Upper Gilgel Abbay as indicated in Fig. 1. Further, stream flow and rainfall time series are screened and are corrected for unrealistic values. We note that, for instance, discharges as high as to $750 \text{ m}^3 \text{ day}^{-1}$ were recorded. Consistency of the daily time series was analyzed by use of double mass curve analysis and by plotting the ratio of incremental differences of rainfall and stream flow (Fig. 2a). Outliers serve to identify and to correct for erroneous runoff or rainfall data. After correction, the stream flow discharges are related to rainfall inputs (Fig. 2b) and

presumably constrains the uncertainty of results of the hydrological impacts assessment. This particularly applies to the extreme values (high and low) that may affect results of trend analysis in this work. The corrected runoff time series are used in hydrological modeling in the Gilgel Abbay in Rientjes et al. (2011) and resulted in a Nash Sutcliffe efficiency of 0.85 when calibrating a modified version of the HBV-96 model (see Lindström et al., 1997) at daily base. We note that the stream flow gauge in the Gilgel Abbay catchment was relocated in 2005 but, to the knowledge of the authors, the rating curve has not been updated. Therefore in this study records after 2005 are not considered.

3 Methods

3.1 Image processing

Three orthorectified images of the Upper Gilgel Abbay were available by the National Aeronautics and Space Administration (NASA) and the Global Land cover Facility center (GLCF) (see <http://glcf.umiacs.umd.edu/index.shtml>). Table 1 shows the acquisition dates, sensor, path/row, resolution and the providers of the images. The acquisition dates of the 1973, 1986 and 2001 images correspond to the dry season of the study area while the images have resolutions of 57 m for the year 1973 and 30 for the years 1986 and 2001. We note that more recent images with full coverage over the Gilgel Abbay are not available for the dry period (i.e. January/February).

The Landsat multispectral scanner (MSS) bands 1, 2, 3, and 4 cover the spectral range between $0.45\text{--}1.10 \mu\text{m}$. Both the Landsat thematic mapper (TM) and enhanced thematic mapper (ETM+) bands 1, 2, 3, 4, 5, and 7 cover the spectral ranges between $0.45\text{--}2.5 \mu\text{m}$. Observations by bands 1–3 represent visible electromagnetic (EM) radiances at wavelengths $0.45\text{--}0.52$, $0.52\text{--}0.60$, and $0.63\text{--}0.69 \mu\text{m}$, respectively. Band 4 corresponds to the near infrared wavelengths at $0.76\text{--}0.90 \mu\text{m}$ while bands 5 and 7 correspond to the mid-infrared wavelengths at $1.55\text{--}1.75$ and $2.08\text{--}2.35 \mu\text{m}$, respectively. The land cover images were created using the band combination of 7, 4, 2 (Landsat TM and ETM+ images of 1986 and 2001) and 4, 2, 1 (Landsat MSS image of 1973) to allow visual interpretation of the image in their true color.

For this study the image in 2001 is georeferenced using ground control points collected using a Global Positioning System (GPS) during a field visit in September 2008, and a 1:50 000 scale topographic map of the study area. The root mean square error (RMSE) of the first order polynomial function (affine transformation) was found to be 0.20 pixel (or 6 m on the ground). The images in 1973 and 1986 are geo-rectified by an image to image registration method. By image registration, the same coordinates are assigned for the same object which is shown in different images and involves georeferencing if the reference image is already rectified to a

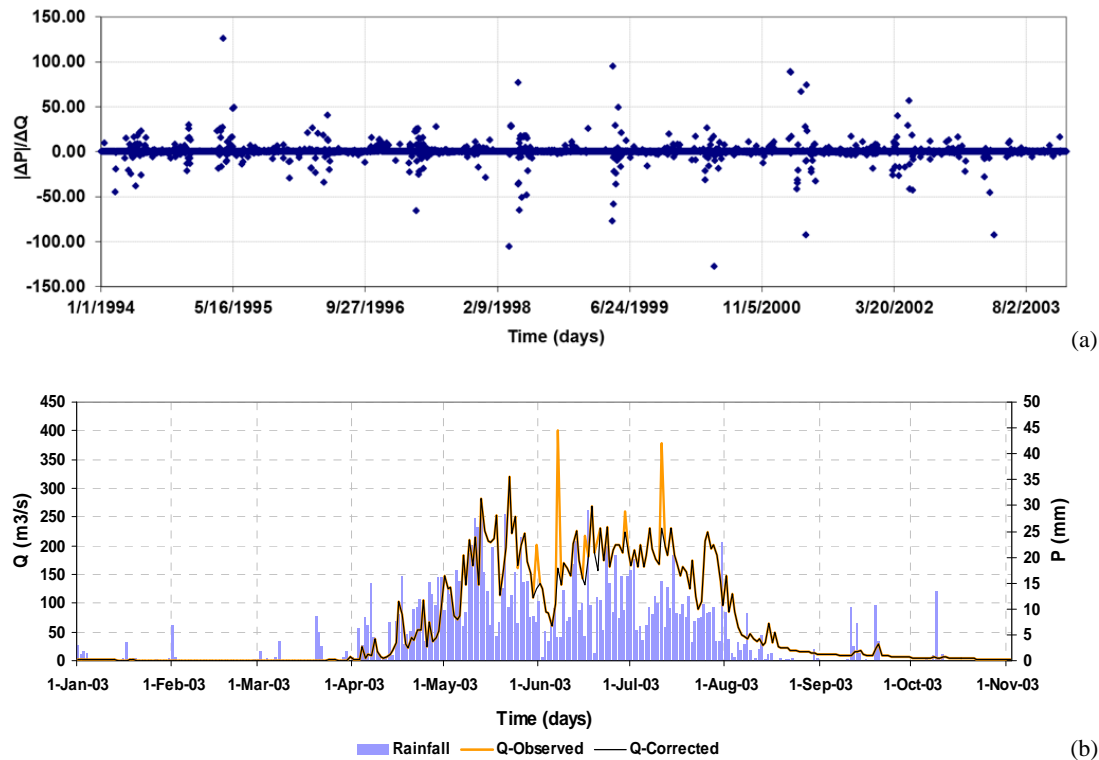


Fig. 2. (a) Ratio of $|\Delta P|/\Delta Q$ for Upper Gilgel Abbay catchment (1994–2003). (b) Corrected outliers in Upper Gilgel Abbay catchment in the year 2003.

Table 1. The data sources for the analysis of land cover change.

Path/ Row	Sensor	Acquisition date	Resolution (m)	Provider
183/52	MSS ¹	1 Feb 1973	57	GLCF ⁵
170/52	TM ²	3 Jan 1986	30	GLCF ⁵
170/53	ETM+ ³	5 Feb 2001	30	GLCF ⁵
170/54	ETM+ ³	12 Sept 1999	30	GLCF ⁵
	SRTM ⁴	2000	90	USGS ⁶ /GLCF ⁵

¹MSS = multi-spectral scanner; ²TM = Thematic mapper; ³ETM = Enhanced thematic mapper; ⁴ = SRTM Shuttle radar topographic mission; ⁵ = GLCF Global Land cover Facility; ⁶ = USGS United States geological Survey.

particular map projection. This allows the use of images that are acquired at different instants in time to represent different periods. For this study, the 1973 and 1986 images are registered to the 2001 image through image to image registration with an RMSE of 0.34 pixel (19.38 m on the ground) for the 1973 image and 0.22 pixel (6.6 m on the ground) for the 1986 image. The RMSE of the registered images is acceptable since they are much less than the resolution of the images. Since images are observed at different moments in time, different conditions can prevail in the atmosphere which affects the measured radiances. As such, the satellite images have

been corrected for atmospheric effects by applying the AT-COR package (see <http://www.erdas.com/tabid/84/currentid/1072/default.aspx>) which is embedded in the ERDAS Imagine software (see <http://www.erdas.com/>).

During our field campaign in 2008, 498 ground control points (GCP) were collected for image based land cover classification where 80 % of the data points were used for training, i.e. for classification, and 20 % were used for validation purposes. We selected locations of the GCP data by interviewing local elderly people and using a topographic map to identify locations for which land cover has not changed between 2001 and 2008.

Based on the collected field data, 5 land cover classes have been identified for the Upper Gilgel Abbay catchment. The description of these land cover classes is as follows:

- *Forest Land (F)*: area with high density of trees which include eucalyptus and coniferous trees.
- *Agricultural land (AG)*: areas used for crop cultivation, and the scattered rural settlements.
- *Shrubs land (SL)*: areas covered with shrubs, bushes and small trees with little wood mixed with some grasses.
- *Grass land (GL)*: area covered with grass that is used for grazing and that remains covered by grass for a considerable period of the year.

- *Water and marshy land (WM)*: area which remains water logged and swampy throughout the year, and rivers.

3.2 Image classification

For supervised classification, the ground control points collected in the field are used as a training sample set. The sample set for the classification is created using the combination of bands 7, 4, 2 (for images of 1986 and 2001) and bands 4, 2, 1 (for the image of 1973) since these band combinations allow visualization of the images in their true color. The maximum likelihood classifier is selected since unlike other classifiers it considers the spectral variation within each category and the overlap covering the different classes.

3.3 Land cover change detection

In this study, post classification comparison is used to quantify the extent of land cover changes over the 30 years period. The advantage of post classification comparison is that it bypasses the difficulties associated with the analysis of the images that are acquired at different times of the year, or by different sensors and results in high change detection accuracy (Alphan, 2003). The output of the post classification comparison is best described by a matrix diagram in which the land cover classes in the respective periods are shown across the rows and columns of the matrix. The output classes are assigned according to the coincidence of any two input classes in the respective periods. If there is no change in the land cover in the respective time period, then values appear only in the diagonal of the matrix. Under such circumstances, the sum of the columns and rows are similar indicating no change in land cover.

3.4 Trends in rainfall and stream flow

Trend analysis of stream flow records is important to evaluate whether climatic factors and human interference significantly affected the hydrological regimes of the catchment. Several approaches are proposed in literature to test the presence of a trend in stream flow records. Following Kahya and Kalayci (2004), in this study we used the Mann-Kendall (MK) test that also is known as the Kendall’s tau statistic (see Burn and Hag Elnur, 2002; Zheng et al., 2007). MK is a non-parametric rank-based method that is widely used to test for randomness against trend in climatological time series (after Kahya and Kalayci, 2004). The test does not require assumptions about the statistical distribution of the data (i.e., data may be skewed) while measurements may be irregularly spaced in time. Since the method is rank based, extreme data points in the hydro-meteorological time series will not largely affect the results of the trend analysis.

The MK test after Mann (1945) and Kendall (1975) is applied and serves to test the presence of a trend in the stream flow records of the Upper Gilgel Abbay. The test statistic (S) for the MK test reads:

$$S = \frac{\sum_{i=1}^{n-1} \sum_{j=i+1}^n \text{sgn}(Y_j - Y_i)}{\sigma_s} \tag{1}$$

With standard deviation:

$$\sigma_s = \sqrt{\frac{n(n-1)(2n+5) - \sum_{i=1}^n t_i(i-1)(2i+5)}{18}} \tag{2}$$

where n is the number of data; Y_j and Y_i are the data values in two consecutive periods; t_i is the number of ties, i.e. equal values, of extent i and n is the number of tied groups. The function $\text{sgn}(Y_j - Y_i) = 1$ if $Y_j - Y_i > 0$; $\text{sgn}(Y_j - Y_i) = 0$ if $Y_j - Y_i = 0$ and $\text{sgn}(Y_j - Y_i) = -1$ if $Y_j - Y_i < 0$. The test statistic S is asymptotically normal with zero mean and standard deviation σ_s ; as computed by Eq. (2) (after Hirsch and Slack, 1984). For cases the sample size n is larger than 10, the standard normal variate p is computed by using the following equation (see Douglas et al., 2000)

$$p = \begin{cases} \frac{S-1}{\sigma_s} & \text{if } S > 0 \\ 0 & \text{if } S = 0 \\ \frac{S+1}{\sigma_s} & \text{if } S < 0 \end{cases} \tag{3}$$

In a two-sided test for trend the null hypothesis of no trend should be accepted if $|p| \leq p_{\alpha/2}$ at the α -level of significance (here $\alpha = 0.05$). The test statistic (S) follows the standard normal distribution and therefore if the probability, under the null hypothesis, of observing a value as extreme (or more extreme) as the test statistic $S > \alpha = 0.05$, then there is a statistically significant trend. We note that a positive value of S indicates an “upward trend” and a negative value indicates a “downward trend” (see Partal and Kahya, 2006). Before applying the MK test, time series data should be tested for auto-correlation. Simple tests in this work on the daily time series of rainfall as well as stream flow indicated that data only is weakly correlated. We note that the weak auto-correlation is supported by research findings in Haile et al. (2009, 2011) on rainfall diurnal cycle assessments and rainfall variability issues.

3.5 Stream flow change detection

Following Zheng et al. (2007), the moving average t-test is applied to identify the year at which changes in stream flow occurred. In this procedure, a time window of length $2N$ years is centered on the year which is considered to be the potential change point. Next, the presence of a change in the mean of the stream flows is evaluated by applying the t-test for the mean values of the annual flows in the two periods of length N years before and after the potential change year. The window is sequentially moved over the entire time period of the flow records by positioning the center of the

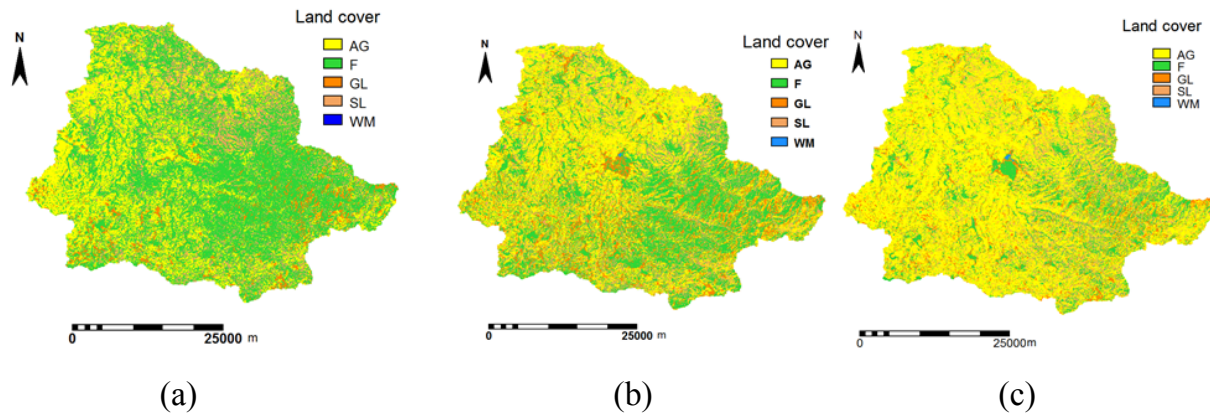


Fig. 3. Land cover of the Upper Gilgel Abbay catchment in 1973 (a), 1986 (b), 2001 (c) by Landsat satellites. AG stands for Agriculture, F for Forest; GL for Grassland, SL for Shrub land, WM for Water and marshy land.

window at the potential change year. The test statistic of the t-test reads:

$$t = \frac{\bar{x}_1 - \bar{x}_2}{s \sqrt{\frac{1}{N_1} + \frac{1}{N_2}}} \quad (4)$$

and

$$s = \sqrt{\frac{N_1 s_1^2 + N_2 s_2^2}{N_1 + N_2 - 2}} \quad (5)$$

where \bar{x}_1 and \bar{x}_2 are the mean annual stream flow of the N years before the potential change point and the N years after the potential change point, respectively; N_1 and N_2 are the number of years in the first and second period; s_1 and s_2 are the standard deviations; s is the pooled standard deviation. In this study N_1 and N_2 are equal. After identifying the time periods that have a statistically significant difference in mean annual flows, some indexes of the flow in each period are estimated. These statistics include a high flow index (Q_5/Q_{50}) and a low flow index (Q_{95}/Q_{50}), where Q_k is the flow with probability of exceedance of k % of the time. The exceedance probabilities are estimated applying the widely used Weibull plotting position formula. This approach was selected since the Weibull formula relates to minima (i.e. smallest extreme values) as compared to Gumbel and Fréchet formula, for instance, that relate to maxima (i.e. largest extreme values).

4 Results

4.1 Land cover classification

Accuracy assessment

Results of the image classification are validated by creating an error (confusion) matrix from which different accuracy

measures are derived. The confusion matrix is used to compare spatially coincident ground control points and pixels of the classified image. Table 2 shows a confusion matrix that is established using 100 ground control points (GCP) which are not used in the classification of the 2001 image.

From the confusion matrix four measures of accuracy are estimated that are the overall accuracy, user's accuracy, producer's accuracy, and the kappa statistic. The overall accuracy is the number of correctly classified pixels (i.e., the sum of the diagonal cells in Table 2) divided by the total number of GCP (i.e., reference data) used for validation. The overall accuracy in the present study is 83 %. The user accuracy in Table 2 is the probability that a certain class in the GCP is labeled also that class in the classification and refers to the columns of the table. The producer accuracy is the probability that a sampled pixel in an image falls in that particular class in the GCP and refers to the rows. Producer's accuracy values for all classes except WM ranged from 83 to 86 %. The kappa coefficient (k) of 0.78 of the maximum likelihood classification represents a probable 78 percent better accuracy than if the classification would be based on random unsupervised classification. Monserud (1990) suggested a kappa value of <40 % as poor, 40–55 % fair, 55–70 % good, 70–85 % very good and >85 % as excellent. According to these ranges, the classification in this study has very good agreement with the validation data set.

Land cover classification maps of the study area are produced for three reference years 1973, 1986 and 2001, see Fig. 3. The land cover types in the respective years are summarized in Table 3 which shows that most parts of the Upper Gilgel Abbay were covered by forest in 1973 and by agricultural land in 1986 and 2001.

4.2 Change detection of the land cover

Tables 4 and 5 show the land cover changes that occurred in the period 1973 to 1986 and the period 1986 to 2001,

Table 2. Confusion matrix for validation of land cover map 2001.

Reference Data	Classified data					Producer's accuracy (%)
	WM	AG	GL	F	SL	
WM ¹	12	0	2	0	0	85.71
AG ²	0	22	2	2	0	84.62
GL ³	1	2	17	0	0	85.00
F ⁴	0	1	1	19	2	82.61
SL ⁵	0	2	0	2	13	76.47
User's accuracy (%)	92.31	81.48	77.27	82.61	86.67	
Overall classification accuracy = 83 %; kappa statistic = 0.78						

¹WM=Water and marshy land; ²AG=Agricultural land; ³GL=Grass land; ⁴F=Forest; ⁵SL=Shrubs

Table 3. Summary of land cover types in Upper Gilgel Abbay catchment for 1973, 1986 and 2001.

Land cover types	1973		1986		2001	
	km ²	%	km ²	%	km ²	%
GL	65.7	4.0	215.9	13.0	146.5	8.8
SL	279.4	16.9	209.9	12.7	147.5	8.9
WM	0.1	0.0	20.5	1.2	45.8	2.8
F	843.8	50.9	544.2	32.9	277.4	16.7
AG	467.2	28.2	665.6	40.2	1038.9	62.7

respectively. In both tables, the areas of the land cover classes that did not change appear along the diagonal of the matrix. The change detection analysis indicates that a significant change in land cover occurred in both periods.

The first row of Table 4 shows that the total area covered by grass land (GL) is 67 km² in 1973. It is shown that 6 km², 5 km², 5 km² and 10 km² of the GL has changed to shrubs, water and marshy, forest and agricultural lands respectively during the period 1973–1986. Also, 267 km², 68 km² and 95 km² of forest land were converted into agricultural land, shrub land and grass land respectively. On the other hand, 5 km² of grass land, 60 km² shrubs land and 66 km² of agriculture land were reforested. Between 1973 and 1986, agricultural land in Upper Gilgel Abbay was expanded by almost 197 km² while forest land was decreased by 299 km².

Results in Table 5 on the period 1986–2001 indicate that 30 km², 23 km², 2 km² and 299 km² of forest land were converted to grass land, shrubs land, water and marshy land, and agricultural land, respectively. In contrast, 27 km² grass land, 16 km² shrubs land, and 43 km² agricultural land were converted to forest land.

Results in Table 3 suggest larger conversion of grass land and forest to agricultural land in 1986–2001 as compared to

Table 4. Land cover (LC) conversion matrix (km²) for the period 1973 and 1986.

Land cover types	GL	SL	WM	F	AG	1973
GL	41	6	5	5	10	67
SL	13	83	5	60	118	279
WM	0	0.1	0	0	0	0.1
F	95	68	0	414	267	844
AG	67	54	10	66	271	468
1986	216	210	20	545	665	1656

Table 5. Land cover (LC) conversion matrix (km²) for the period 1986 and 2001.

Land cover types	GL	SL	WM	F	AG	1986
GL	61	6	23	27	99	216
SL	18	76	0	16	100	210
WM	10	0	9	0	1	20
F	30	23	2	192	299	546
AG	29	43	11	43	538	664
2001	148	148	45	278	1037	1656

1973–1986 suggesting acceleration of land cover changes. For the periods that cover time spans of 6 years and 13 years respectively, agricultural land increased by some 373 and 198 km² while forest land decreased by some 267 and 299 km².

4.3 Trend detection in rainfall and stream flow

For all month of the year, statistically significant changes are suggested by the MK test statistics. On annual base rainfall of Dangila station showed a negative or “downward” trend over the time period 1973–2005 (Table 6). For each month some trend is shown but the trend over consecutive months not always is consistently positive or negative. Rainfall in the dry season in the months of December, January and February shows statistically significant trends. For December and January a clear negative trend is indicated while for February a positive trend is indicated although the trend only is weak by the small value of the test statistic *S*. We note that the changes in rainfall in the dry season only is expected to have a small effect on stream flow since rainfall only is very small in the dry season (<10 mm per month). Towards the beginning of the rainy season in the months of March–May (also called “small-rainy period”) a statistically significant negative trend is shown. In the month of June the trend increases indicating that rainfall has increased at the start of the wet season. In the remaining months of the wet season

Table 6. The Mann-Kendall test statistic (S) for trend analysis for annual and monthly stream flow and rainfall in the Upper Gilgel Abbay catchment. Note the p-values are shown between brackets while statistically significant trends (p-value > 0.05) are highlighted in gray.

Period	Upper Gilgel Abbay (Stream flow)	Dangila (Rainfall)
Annual	−0.99 (0.321)	−0.87 (0.382)
January	−5.18 (0.000)	−1.58 (0.115)
February	−5.52 (0.000)	+0.07 (0.944)
March	−5.14 (0.000)	−0.63 (0.528)
April	−2.67 (0.008)	−0.18 (0.861)
May	−0.28 (0.780)	−0.25 (0.801)
June	+1.64 (0.101)	+1.05 (0.101)
July	−0.50 (0.620)	−0.42 (0.670)
August	−2.42 (0.016)	−1.44 (0.151)
September	−2.73 (0.006)	−0.28 (0.779)
October	0.000 (−0.988)	−0.39 (0.699)
November	−1.53 (0.125)	+0.67 (0.505)
December	−3.38 (0.011)	−1.08 (0.277)

a negative trend is observed for the wettest months (July and August) and towards the end of the rainy season (September and October).

Results of the MK test for stream flow are also shown in Table 6. Analysis on annual stream flow of the Upper Gilgel Abbay shows a negative trend that is statistically significant. An analysis on monthly stream flow indicates a negative, downward trend for most months of the year but test statistics are not always significant. This particularly applies to the low flows in the dry season (December–April). A negative but statistically insignificant trend is also observed in August and September that cover the second half of the wet season. At the beginning of the dry season in October no trend is indicated while for November a negative trend is indicated. For both months the indicated trend is statistically significant.

Negative or downward trends that statistically are significant are observed in the wet season in May (start of wet season) and July (wet season). Only in June a positive or “upward” trend is shown that is statistically significant. When comparing the statistically significant trends for rainfall and stream flow, we note that similar upward or downward trend directions of rainfall and stream flow are shown in May–July.

4.4 Change detection for stream flow

Figure 4 shows the estimated t-values and the critical t-values for the stream flow of the Gilgel Abbay catchment which is represented by the solid line and the broken lines, respectively. For selection of the window size a simple sensitivity analysis has been performed but results indicated that the

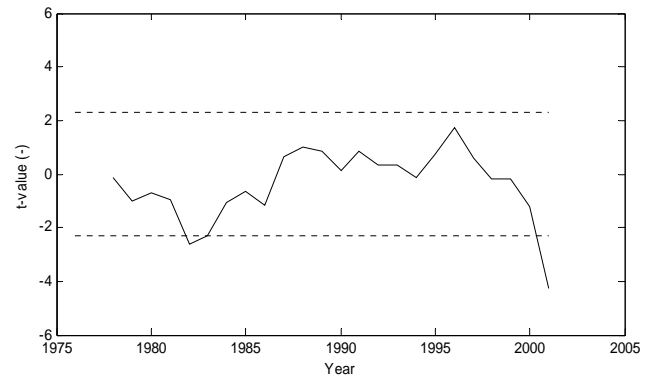


Fig. 4. Results of change-point detection for the annual flow of Upper Gilgel Abbay catchment using the moving t-test method (1973–2001). Note: the solid line represents the estimated t-values while the broken lines indicate the critical t-value for $\alpha = 0.05$.

change point (year) of the stream flow is quite insensitive to the window size. As such we applied a window size of $2N = 10$. Further, a significance level of $\alpha = 0.05$ was selected for which the absolute value of the critical t-value is $t_{\alpha} = 2.3$. As such, a change is considered to occur in a particular year when the absolute value of the estimated t-value in Eq. (4) exceeds the value 2.3.

The figure shows that for the years 1982 and 2001 the estimated t-values are lower than the critical t-values which indicate the moment (or period) in time at which the mean of the annual stream flow has changed. Analysis on changes of annual stream flow records suggested that three periods, 1973–1981, 1982–2000, 2001–2005, could be identified for which changes are observed. For each of these periods a satellite image on the land cover was available. We note that the rainfall time series of Dangila station covered a much smaller period and therefore only 2 periods (1988–2000 and 2001–2005) could be identified. These periods (partly) cover the period of the stream flow analysis.

Table 7 shows some features of the annual stream flow of Upper Gilgel Abbay catchment. The three time periods in the table are identified based on the results of the moving average t-test. In the analysis, results from the second period are compared to results from the first period while results from the third period are subsequently compared to results from the second period. Overall, the mean annual flow of Gilgel Abbay has substantially decreased over the period 1973–2005 with a decrease of 5.3 % during the second period and a further decrease by 12.7 % in the third period. We note that results of the MK test indicate that the decrease of the annual flow is followed a downward trend that is statistically significant. Contrary to the decrease of the annual flows, the high flow index (Q_5/Q_{50}) of the Gilgel Abbay catchment increased by some 7.6 % during the second period and an additional 46.6 % during the third period. This suggests that increases of high flows are particularly observed during the

Table 7. Stream flow characteristics of Upper Gilgel Abbay catchment.

Time period	1973–1981	1982–2000	2001–2005
Annual flow (mm yr ⁻¹)	1085	1027	896
High flow index, Q_5/Q_{50} , (–)	18.58	20.00	29.27
Low flow index, Q_{95}/Q_{50} , (–)	0.22	0.18	0.12

third period. Obviously high flows apply to the wet season. Contrary to this increase, results of the MK tests on rainfall data in the wet season (Table 6) indicate that rainfall has significantly decreased over the past decades and thus high flow discharges are expected to reduce. Results of the low flow index (Q_{95}/Q_{50}) show a decrease by 18.1 % for the first period and an additional 66.6 % for the third period. This suggests that the probability that a Q_{95} low flow will be exceeded has decreased and thus indicates that low flow discharges in general have decreased.

Table 8 shows the rainfall amounts at Dangila during the last two time periods for which changes in stream flows are detected. The annual rainfall of Dangila, which is situated in Gilgel Abbay catchment, decreased over the two time periods suggesting that the decrease in the flow of Upper Gilgel Abbay catchment can be partly explained by a decrease in rainfall amount. However, the JJA rainfall and the ratio of JJA to annual rainfall of Dangila slightly increased over the time periods. This is in agreement with the increase in the high flow index which shows that high flows of Upper Gilgel Abbay increased.

5 Discussion and conclusion

For the Upper Gilgel Abbay catchment for the period 1973–2001 changes of land cover and rainfall and their effect on the hydrological regime were analyzed. For assessing the changes in land cover we used three remote sensing images that were acquired in the dry season month of February for the years 1973, 1986, 2001. An accuracy assessment by use of a confusion matrix for the supervised land cover classification indicates that the classification results are reliable. Land cover changes in the study area are assessed by post classification comparison were results showed that forest land decreased from 50.9 % in 1973 to 32.9 % in 1986. Agricultural land increased from 28.2 % in 1973 to 40.2 % in 1986. In the time period 1986–2001 forest land decreased from 32.9 % to 16.7 % while agricultural land increased from 40.2 % to 62.7 %. This indicates that the rate of deforestation is slightly smaller in the second time period as compared to the first period and probably is due to reforestation activities in the catchment. The extent of deforestation, however, is still much larger than the extent of reforestation. The expansion of agricultural land in the period 1986–2001 is larger

Table 8. Rainfall depths of Dangila stations for the period the changes in stream flow are observed.

Period	1988–2000	2001–2005
Annual rainfall (mm)	1625	1512
JJA rainfall (mm)	964	1006
Ratio JJA over Annual rainfall (%)	59.3	66.5

than in the previous time period suggesting that the demand for agricultural lands has increased.

To evaluate if changes of rainfall during the period 1973–2005 possibly could have affected stream flow we performed Mann-Kendall trend analysis on daily rainfall for Dangila station that is located in the catchment. We showed that rainfall in general has decreased following a negative trend that is statistically significant. Only for the wet month of June and the months of February and November, that both are in the dry season, a positive trend is indicated suggesting that rainfall has increased. Comparing mean annual rainfall for the periods 1988–2000 and 2001–2005 revealed that annual rainfall has decreased by 6.9 % but the wet season rainfall has increased by 4.3 % indicating that the seasonal rainfall distribution has changed.

Results of a change detection analysis on annual stream showed that three periods (1973–1981, 1982–2000, 2001–2005) can be identified for which changes occurred. Mann-Kendall test results for stream flow at monthly base indicate that flows in general have a negative trend but trends are not statistically significant for all months. Only for the month of June an upward trend is indicated that is statistically significant. We showed that the annual stream flow of the Upper Gilgel Abbay experienced a decreasing trend over the 32 year time period where the rate of decrease is higher in the third period (12.7 %) than in the second period (5.3 %). For analyzing if changes in low flows and high flows occurred for the same three time periods we used a low flow and a high flow index as indicator that is based on daily stream flow records. Results of the low flow index show a decrease by 18.1 % for the first period and an additional 66.6 % for the third period. Results of the high flow index show a 7.6 % increase during the second period and an additional 46.6 % increase during the third period.

Results of this study show that changes in stream flow records are a result of changes in land cover and changes in the annual and seasonal distribution of rainfall. In terms of land cover changes, most pronounced is the relatively large decrease of forested area and the large increase of agricultural land. Hydrologically, forested areas behave differently

from agricultural areas and in general more rainwater is stored in the subsurface of forested areas. As a consequence of deforestation and land degradation processes soil permeability often decreases and causes that infiltration rates and recharge fluxes decrease. Therefore by deforestation less amounts of rainwater are stored in the unsaturated zone during periods of rain. This consequently results in quicker runoff responses where flow rates increase and we presume that this partly causes the increase of the high flow index in the Upper Gilgel Abbay. As stated in the Introduction section, water erosion processes have frequently been observed in agricultural areas during field visits over the past 6 years. We note that lower water storage causes that less soil water is available for evapotranspiration processes during inter-event periods and dry periods and therefore causes that the unsaturated zone may deplete quicker. Reduced water storage, however, also causes recharge fluxes to decrease and consequently result in lower base flows. This is particularly observable during the dry season as indicated by the low flow index in the Upper Gilgel Abbay. We note that effects of evapotranspiration processes are somewhat uncertain in this study. In the Gilgel Abbay reforestation mostly has been by eucalypt trees that commonly cause higher actual evapotranspiration than agricultural land as partly caused by larger unsaturated zone storage and larger plant transpiration. Therefore reforested areas cause larger actual evapotranspiration losses as compared to agricultural land with often less water storage volumes available to generate catchment runoff. This particularly is observable during the dry season when stream flow is by base flow processes. For accurate assessments on evapotranspiration fluxes a remote sensing based approach could be applied where the energy balance is solved (see Muthuwatta et al., 2010).

The increase of the wet season rainfall may result in a higher high flow index value. During periods of excessive rainfall, high flow discharges increase when rainwater is not stored by infiltration and percolation processes in the unsaturated zone. Increases of high flow discharges are expected in areas where agricultural land has largely increased by deforestation and in case of land degradation (e.g. Mati et al., 2008; Costa et al., 2003). The decrease of low flows in this work is also described in Kashaigili (2008) and Bewket and Sterk (2005) but is not described in Zhang and Schilling (2006) and Siriwardena et al. (2006). We note that research findings may differ because of the selected methodology and the specific catchment settings that may differ. For instance, conclusions in Siriwardena et al. (2006) are largely based on a number of modeling results but quite different results were obtained when applying different models. Also we note that rainfall did not change to the extent as in our study. The work of Bewket and Sterk (2005) in the Chemoga catchment in Ethiopia resembles our approach where land cover changes are assessed by a remote sensing approach and time series data that is analyzed. Conclusions on changes in stream flows are similar to conclusions in this

study where changes in stream in both studies are affected by changes in rainfall as well.

We note that different climatic and catchment characteristics do not allow direct comparison of our results to results from other regions and therefore our results do not allow generalization. We recommend that future work must apply distributed hydrologic models with a physical basis to allow better evaluation of effects of land cover changes and rainfall distributions on the hydrologic regime. Also changes in actual evapotranspiration must be assessed as caused by changes in land cover. Therefore we recommend the use of a remote sensing based approach that solves the energy balance in a spatially distributed fashion to account for the different land covers. We note that both the rainfall-runoff modeling and the energy balance modeling are scheduled for future work.

Acknowledgements. The two anonymous reviewers are gratefully acknowledged for their valuable comments on our manuscript. We also acknowledge the Ethiopian Meteorological Agency and the Ethiopian Ministry of Water Resources for their support by supplying the time series data for rainfall and stream flow. This study was financially supported by the Netherlands Fellowship Programme (NFP).

Edited by: S. Uhlenbrook

References

- Abdo, K. S., Fiseha, B. M., Rientjes, T. H. M., Gieske, A. S. M., and Haile, A. T.: Assessment of climate change impacts on the hydrology of Gilgel Abbay catchment in Lake Tana basin, Ethiopia, *Hydrol. Process.*, 23(26), 3661–3669, 2009.
- Alphan, H.: Land-use change and urbanization of Adana, Turkey, *Land Degrad. Dev.*, 14, 575, 2003.
- Andréassian, V.: Waters and forests: from historical controversy to scientific debate, *J. Hydrol.*, 291, 1–27, 2004.
- ANRS – Amhara National Regional State: Bureau of Finance and Economic Development, Annual Statistical Bulletin, January, 2009.
- Arnold, J. G., Srinivasan, R., Muttiah, R. S., and Williams, J. R.: Large area hydrologic modeling and assessment, Part 1: Model development, *J. Am. Water Res. Assoc.*, 34(1), 73–89, 1998.
- Bewket, W. and Sterk, G.: Dynamics in land cover and its effect on stream flow in the Chemoga watershed, Blue Nile basin, Ethiopia, *Hydrol. Process.*, 19, 445–458, 2005.
- Bosch, J. M. and Hewlett, D.: A review of catchment experiments to determine the effects of vegetation changes on water yield and evapotranspiration, *J. Hydrol.*, 170, 123–135, 1982.
- Burn, D. H. and Hag Elnur, M. A.: Detection of hydrological trends and variability, *J. Hydrol.*, 255, 107–122, 2002.
- Cosandey, C., Andréassian, V., Martin, C., Didon-Lescot, J. F., Lavabre, J., Folton, N., Mathys, N., and Richard, D.: The hydrological impact of the Mediterranean forest: a review of French research, *J. Hydrol.*, 301, 235–249, 2005.
- Costa, M. H., Notta, A., and Cardille, J. A.: Effects of large-scale changes in land cover on the discharge of the Tocantins River, Southeastern Amazonia, *J. Hydrol.*, 283, 206–217, 2003.

- Douglas, E. M., Vogel, R. M., and Kroll, C. N.: Trends in floods and low flows in the United States: impact of spatial correlation, *J. Hydrol.*, 240, 90–105, 2000.
- Guillemette, F., Plamondon, A. P., Prévost, M., and Lévesque, D.: Rainfall generated stormflow response to clearcutting a boreal forest: peak flow comparison with 50 world-wide basin studies, *J. Hydrol.*, 302, 137–153, 2005.
- Haile, A. T., Rientjes, T., Gieske, M., and Gebremichael, M.: Rainfall Variability over mountainous and adjacent lake areas: the case of Lake Tana basin at the source of the Blue Nile River, *J. Appl. Meteor. Climatol.*, 48, 1696–1717, 2009.
- Haile, A. T., Rientjes, T. H. M., Gieske, A., Gebremichael, M.: Rainfall estimation at the source of the Blue Nile: A multispectral remote sensing approach. *Int. J. Appl. Earth. Obs. Geoinf. JAG*, 12(Supplement 1), S76–S82, 2010.
- Haile, A. T., Rientjes, T. H. M., Habib, E., Jetten, V., and Gebremichael, M.: Rain event properties at the source of the Blue Nile River, *Hydrol. Earth Syst. Sci.*, 15, 1023–1034, doi:10.5194/hess-15-1023-2011, 2011.
- Hirsch, R. M. and Slack, J. R.: A non-parametric trend test for seasonal data with serial dependence, *Water Resour. Res.*, 20(6), 727–732, 1984.
- Iroumé, A., Huber, A., and Schulz, K.: Summer flows in experimental catchments with different forest covers, Chile, *J. Hydrol.*, 300, 300–313, 2005.
- Kahya, E. and Kalayci, S.: Trend analysis of streamflow in Turkey, *J. Hydrol.*, 289, 128–144, 2004.
- Kashaigili, J. J.: Impacts of land-use and land-cover changes on flow regimes of the Usangu wetland and the Great Ruaha River, Tanzania, *Phys. Chem. Earth*, 33(8–13), 640–647, 2008.
- Kendall, M. G.: *Rank Correlation Methods*, Charles Griffin, London, 1975.
- Lavabre, J., Sempere Torress, D., and Cernesson, F.: Changes in the hydrological response of a small Mediterranean basin in a year after a wildfire, *J. Hydrol.*, 142, 273–299, 1993.
- Lindström, G., Johansson, B., Persson, M., Gardelin, M., and Bergström, S.: Development and test of the distributed HBV-96 hydrological model, *J. Hydrol.*, 201, 272–288, 1997.
- Lørup, J. K., Refsgaard, J. C., and Mazvimavi, D.: Assessing the effects of land use change on catchment runoff by combined use of statistical tests and hydrological modelling: Case studies from Zimbabwe, *J. Hydrol.*, 205, 147–163, 1998.
- Mann, H. B.: Nonparametric tests against trend, *Econometrica*, 13, 245–259, 1945.
- Mati, B. M., Mutie, S., Gadain, H., Hame, P., and Mtalo, F.: Impacts of land-use/cover changes on the hydrology of the transboundary Mara River, Kenya/Tanzania, *Lakes Reserv. Res. Manage.*, 13(2), 169–177, 2008.
- Monserud, R. A.: *Methods for comparing global vegetation maps*, Report WP-90-40, IIASA, Laxenburg, 1990.
- Muthuwatta, L. P., Ahmad, M. D., Bos, M. G., and Rientjes, T. H. M.: Assessment of water availability and consumption in the Karkheh River Basin (Iran) using remote sensing and geo-statistics, *Water Resour. Manage.*, 24, 459–484, doi:10.1007/s11269-009-9455-9, 2010.
- Partal, T. and Kalya, E.: Trend analysis in Turkish precipitation data, *Hydrol. Process.*, 20, 2011–2026, doi:10.1002/hyp.5993, 2006.
- Rientjes, T. H. M., Perera, B. U. J., Haile, A. T., Reggiani, P., and Muthuwatta, L. P.: Regionalisation for lake level simulation - the case of Lake Tana in the Upper Blue Nile, Ethiopia, *Hydrol. Earth Syst. Sci.*, 15, 1167–1183, doi:10.5194/hess-15-1167-2011, 2011.
- Seibert, J.: *HBV light users manual*, Uppsala University, 2002.
- Siriwardena, L., Finlayson, B. L., and McMahon, T. A.: The impact of landuse change on catchment hydrology in large catchments: The Comet River, Central Queensland, Australia, *J. Hydrol.*, 326, 199–214, 2006.
- Setegn, S. G., Srinivasan, R., Melesse, A. M., and Dargahi, B.: SWAT model application and prediction uncertainty analysis in the Lake Tana Basin, Ethiopia, *Hydrol. Process.*, 24, 357–367, 2010.
- Solomon, G. G., Taye, A., and Bishop, K.: Forest Cover and Stream Flow in a Headwater of the Blue Nile: Complementing Observational Data Analysis with Community Perception, *Ambio*, 39, 284–294, doi:10.1007/s13280-010-0047-y, 2010.
- Tesemma, Z. K., Yasir, A. M., and Steenhuis, T. S.: Trends in rainfall and runoff in the Blue Nile Basin: 1964–2003, *Hydrol. Process.*, 24, 3747–3758, doi:10.1002/hyp.7893, 2010.
- Troendle, C. A. and King, R. M.: The effect of partial and clearcutting on stream flow at Deadhorse Creek, Colorado, *J. Hydrol.*, 90, 145–157, 1987.
- Uhlenbrook, S., Mohamed, Y., and Gagne, A. S.: Analyzing catchment behavior through catchment modeling in the Gilgel Abay, Upper Blue Nile River Basin, Ethiopia, *Hydrol. Earth Syst. Sci.*, 14, 2153–2165, doi:10.5194/hess-14-2153-2010, 2010.
- Wale, A., Rientjes, T. H. M., Gieske, A. S. M., and Getachew, H. A.: Ungauged catchment contributions to Lake Tana's water balance, *Hydrol. Process.*, 23(26), 3682–3693, 2009.
- Wilk, K., Andersson, L., and Plermkamon, V.: Hydrological impacts of forest conversion to agriculture in a large river basin in northeast Thailand, *Hydrol. Process.*, 15, 2729–2748, 2001.
- Zhang, Y. K. and Schilling, K. E.: Increasing streamflow and baseflow in Mississippi River since the 1940's: Effect of land use change, *J. Hydrol.*, 324, 412–422, 2006.
- Zheng, H., Zhang, L., Liu, C., Shao, Q., and Fukushima, Y.: Changes in stream flow regime in headwater catchments of the Yellow River basin since the 1950s, *Hydrol. Process.*, 21, 886–893, 2007.