



Corrigendum to “CLM4-BeTR, a generic biogeochemical transport and reaction module for CLM4: model development, evaluation, and application” published in Geosci. Model Dev., 6, 127–140, 2013

J. Y. Tang, W. J. Riley, C. D. Koven, and Z. M. Subin

Department of Climate and Carbon Sciences, Earth Sciences Division, Lawrence Berkeley National Lab (LBL),
Berkeley, CA, USA

Correspondence to: J. Y. Tang (jinyuntang@lbl.gov)

In the paper “CLM4-BeTR, a generic biogeochemical transport and reaction module for CLM4: model development, evaluation, and application” by J. Y. Tang, Fig. 10 was erroneously omitted from the published paper. Please find here Fig. 10 and its caption.

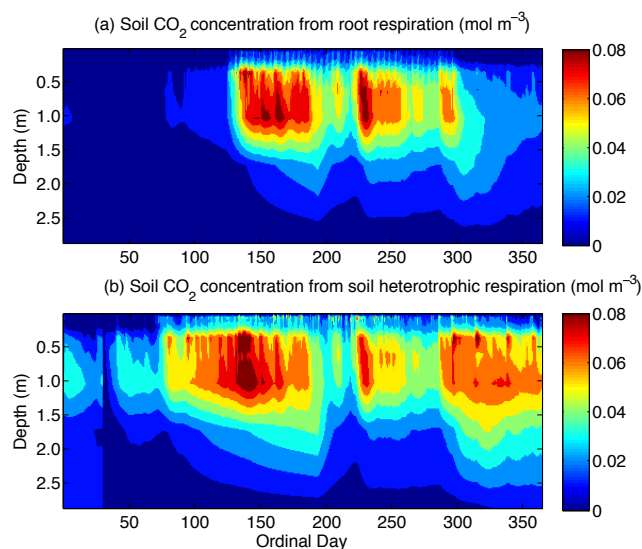


Fig. 10. Simulated seasonal cycle of soil CO₂ concentrations contributed from (a) autotrophic root respiration and (b) soil heterotrophic respiration.