

Nonstationary pearl pulsations as a signature of magnetospheric disturbances

F. Z. Feygin¹, N. G. Kleimenova¹, O. A. Pokhotelov¹, M. Parrot²,
K. Prikner³, K. Mursula⁴, J. Kangas⁵, T. Pikkarainen⁴

¹ Institute of Physics of the Earth, Moscow, 123810, Russia

² Laboratoire de Physique et Chimie de l'Environnement, Centre National de la Recherche Scientifique, Orléans, France

³ Geophysical Institute, Czech Academy of Sciences, Prague, Czech Republic

⁴ Department of Physical Sciences, P.O. Box 3000, FIN-90014 University of Oulu, Finland

⁵ Sodankylä Geophysical Observatory, FIN-99600 Sodankylä, Finland

Received: 3 May 1999 / Revised: 24 January 2000 / Accepted: 9 February 2000

Abstract. We analyse long-lasting (several hours) Pc1 pearl pulsations with decreasing, increasing or constant central frequencies. We show that nonstationary pearl events (those with either decreasing or increasing central frequency) are observed simultaneously with increasing auroral magnetic activity at the nightside magnetosphere while the stationary events (constant central frequency) correspond to quiet magnetic conditions. Events with decreasing central frequency are observed mostly in the late morning and daytime whereas events with increasing central frequency appear either early in the morning or in the afternoon. We explain the diurnal distribution of the nonstationary pearl pulsations in terms of proton drifts depending on magnetic activity, and evaluate the magnetospheric electric field based on the variation of the central frequency of pearl pulsations.

Key words: Magnetospheric physics (magnetospheric configuration and dynamics; plasma waves and instabilities)

1 Introduction

Electromagnetic ion cyclotron (EMIC) waves in the form of Pc1 pulsations have been extensively studied in the past (for reviews, see e.g. Guglielmi and Pokhotelov, 1996; Kangas *et al.*, 1998). Among the most common and intriguing types of Pc1 pulsations are the pearl pulsations which consist of periodic emissions in the form of wave trains or “pearls” (Sucksdorff, 1936). They are thought to be wave packets propagating along the magnetic field line between conjugate ionospheres

(Jacobs and Watanabe, 1964; Obayashi, 1965). EMIC waves are a consequence of gyroresonant interaction with energetic protons (Cornwall, 1965; Kennel and Petschek, 1966; Feygin and Yakimenko, 1969; Gendrin *et al.*, 1971). In spite of a fairly good understanding of the properties and generation mechanisms of these pulsations their relation to other geomagnetic perturbations is still insufficiently investigated. The results obtained by Wentworth (1964), Plyasova-Bakounina and Matveeva (1968), and Feygin *et al.* (1970) show that the majority of pearl pulsations was observed during the recovery phase of a magnetic storm. The relation of temporal variations in Pc1 pulsations to geomagnetic activity was studied in detail by Fraser (1968).

The analysis by Matveeva *et al.* (1972) revealed that in most cases the pulsation central frequency decreases towards the end of the pearl series. Campbell (1967) showed that during the diurnal variation, the Pc1 frequency increases during very early morning hours and decreases before noon. He proposed that this phenomenon may be connected with different ionospheric attenuation of hydromagnetic waves.

This study is devoted to the analysis of long-lasting (~2–6 h) pearl pulsations with decreasing, increasing, or constant central frequency, and to the connection of non-stationary pearl pulsations with nightside substorm activity (measured by *AE*-index). On the other hand, the stationary series of pearl pulsations appear mainly during quiet magnetic conditions. The work is organized in the following way. The observational results and the corresponding data analysis are presented in Sect. 2. We discuss the observations and present a theoretical interpretation in Sect. 3. Our conclusions are found in Sect. 4.

2 Observations and data analysis

We have analysed Pc1 pearls observed at three Finnish stations (Ivalo, $\lambda = 110^\circ$, $\Phi = 64.9^\circ$, $L = 5.5$, Sodankylä, $\lambda = 109^\circ$, $\Phi = 63.9^\circ$, $L = 5.1$, and Oulu, $\lambda = 107^\circ$, $\Phi = 61.8^\circ$, $L = 4.3$) between 1975–1995. The

local time at these observational sites is connected to universal time roughly by $LT = UT + 2$ h. We divide the Pc1 pearl events into two categories according to the temporal evolution of central frequency f_0 : (a) nonstationary events with increasing or decreasing f_0 (65 events), and (b) stationary events with constant f_0 (50 events).

The average duration of all events is about 2.5 h, and the mean variation of f_0 relative to the starting frequency for nonstationary events is about 30%. The average K_p was about 2–3 for nonstationary events and 1 for stationary events. We note that variation of the central frequency is always accompanied by a change in the repetition period τ . During the events with decreasing (increasing) central frequency τ increases (decreases) from the beginning to the end of the event. We may assume that the increase (decrease) in τ may be produced by the drift of the Pc1 source to the region of longer (shorter) geomagnetic field lines where the external magnetic field is weaker (stronger). Moreover, at the beginning of events with decreasing f_0 the product τf (average $(\tau f)_{st} = 104$) is always greater than at the end (average $(\tau f)_{end} = 90$). The opposite variation was observed for events with increasing central frequency. Of course, a more detailed statistical treatment of the problem in hand is necessary, using quantitative parameters such as standard deviation, confidence level, error bars etc. However, this is outside the scope of the present study and a quantitative analysis will be given in a separate paper.

Typical examples of non-stationary events are shown in Figs. 1–3. These events characterise the general features which are common for events included in this analysis. Figure 1 demonstrates an event with decreasing f_0 , Fig. 2 an event with increasing f_0 , and Fig. 3 an event with an arc-like variation of f_0 . The Pc1 pearl event of Fig. 1 is characterised by the following features. The initial central frequency f_{st} was 1.36 Hz, and the final central frequency f_{end} was 0.75 Hz. The repetition period τ varied from $\tau_{st} = 111$ s at the beginning of

event to $\tau_{end} = 166$ s at the end. The product τf varied from $(\tau f)_{st} = 150$ to $(\tau f)_{end} = 125$. In the event shown in Fig. 2 the corresponding values were $f_{st} = 1.0$ Hz, $f_{end} = 1.36$ Hz, $\tau_{st} = 88$ s, $\tau_{end} = 70$ s, $(\tau f)_{st} = 88$, and $(\tau f)_{end} = 95$.

As a rule, the nonstationary events were observed during moderate geomagnetic activity with $AE \leq 500$ nT. In many cases the decrease in central frequency was accompanied by a growth in the AE -index. The latter means that there was a substorm activity developing within the nightside of the magnetosphere. It should be noted that, typically, Pc1 generation was terminated when the AE -index approached its maximum value. Figure 4 shows the AE -index variation on February 5, 1993, accompanied by nonstationary (04–08 UT) and stationary (12–14 UT) Pc1 pulsations. (Standard 1-h AE -index values provided by Kyoto WDC-3 were used in our analysis). The central frequency of the nonstationary pulsations in Fig. 4 varied from 0.8 Hz to 0.5 Hz. The AE -index during this period increased from the value 90 to 290, whereas during the stationary event ($f_0 = 0.6$ Hz) it remained constant at $AE \approx 60$.

Figure 5 shows schematically the diurnal variation of the occurrence of nonstationary Pc1s. Events with decreasing frequency are observed mostly in the late morning and around noon while events with increasing central frequency are observed either soon after midnight or in the afternoon. Because Pc1 pulsations with decreasing central frequency were observed during periods of rising auroral magnetic activity, it is important to consider how this reduction in the wave frequency depends on the AE index. Figure 6 represents the frequency variation of the late morning and prenoon nonstationary Pc1s with AE . In all cases AE at the beginning was smaller than at the end of the event (leading to the negative slope in Fig. 6). Most events started under relatively low magnetic activity with AE smaller than 150 nT. The rate of frequency decrease was higher for periods of low AE values than for periods

SODANKYLÄ 29.10.1994

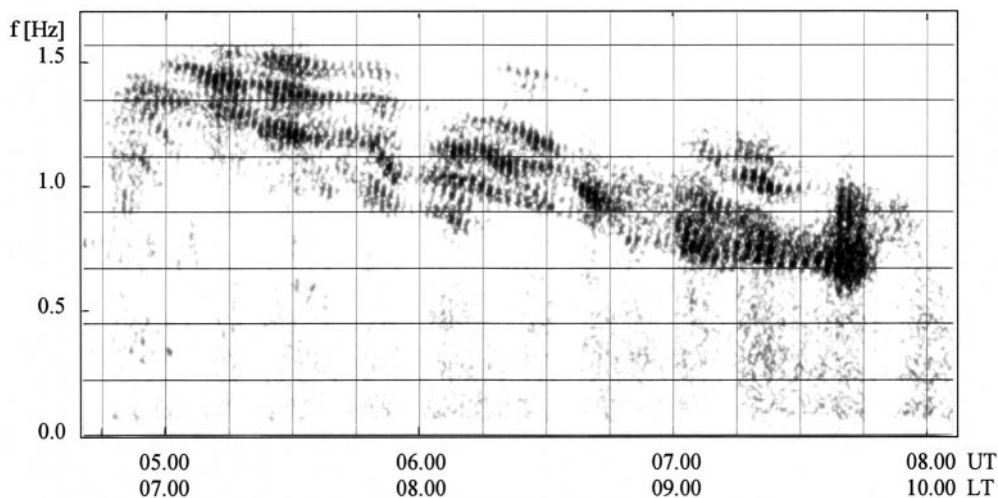


Fig. 1. The sonogram of Pc1 pulsations observed at Sodankylä on October 29, 1994, showing a decreasing central frequency

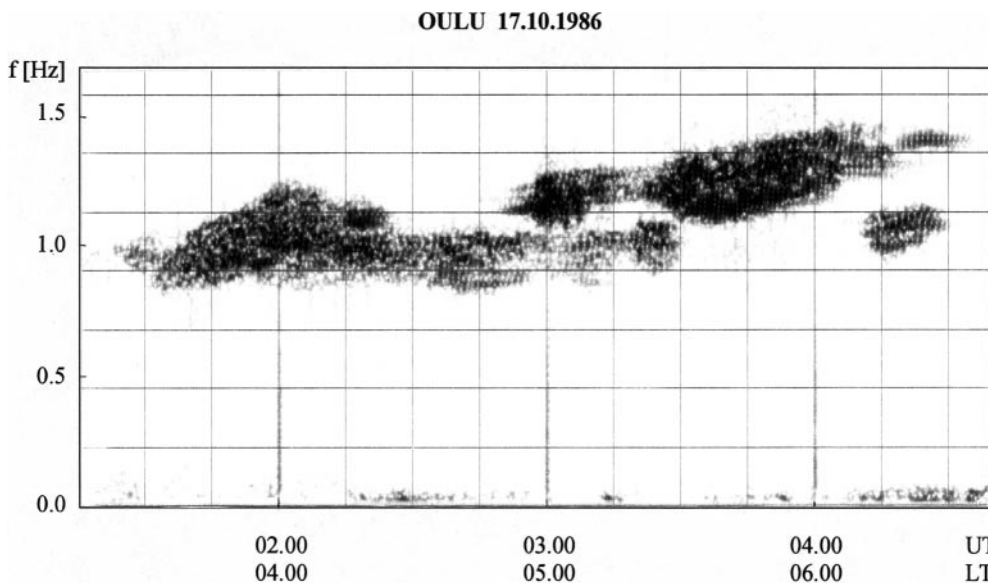


Fig. 2. The sonogram of Pc1 pulsations observed at Oulu on October 17, 1986, showing an increasing central frequency

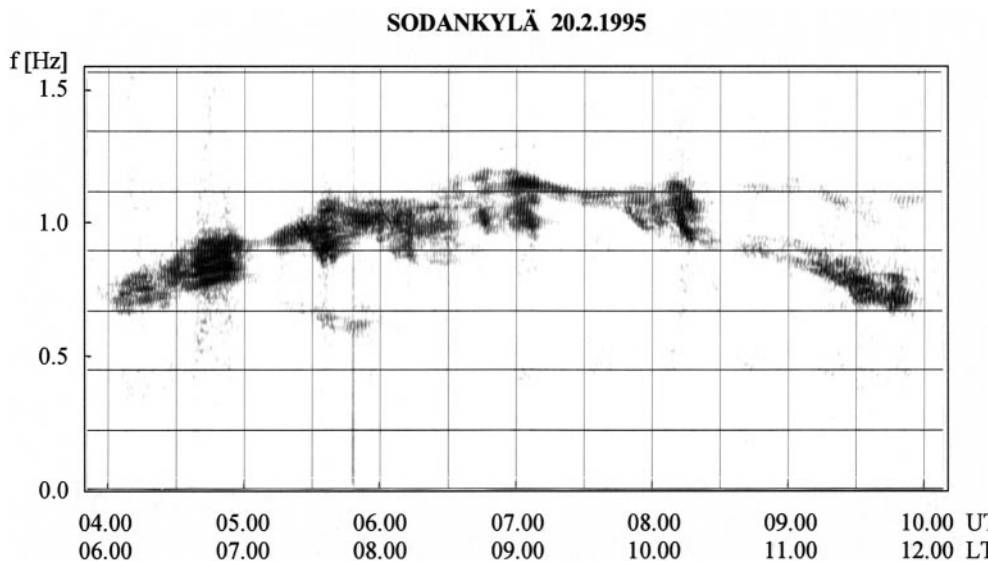


Fig. 3. The sonogram of Pc1 pulsations observed at Sodankylä on February 20, 1995, illustrating a case when both an increase and a decrease in the central frequency appears during the same event

with *AE* greater 300 nT. No dependence between the final frequencies of the individual events and *AE* values was found. On the other hand, contrary to the morning Pc1s with decreasing frequency depicted in Fig. 6, the

afternoon Pc1 pulsations with increasing central frequency show no coherent pattern with *AE*, and have been observed during periods of both rising and decreasing *AE* values.

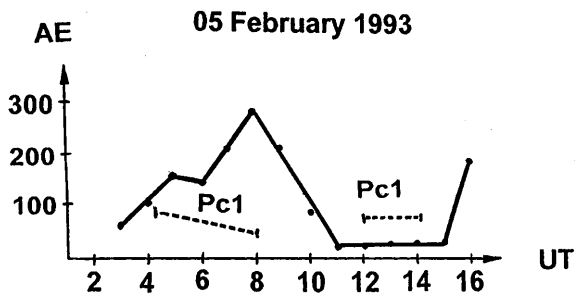


Fig. 4. Temporal variation of the *AE*-index (solid line) and the trend of the central frequency (dashed lines) of nonstationary and stationary pearl pulsations observed at Sodankylä on February 5, 1993

Figure 3 illustrates a situation when the central frequency of structured Pc1 pulsations first increased and then decreased. It is worth mentioning that this event coincides with a similar temporal variation of the *H*-component of the geomagnetic field (as measured, e.g. by the normal magnetogram at Sodankylä; not shown). The geomagnetic conditions were very quiet during this event ($K_p = 1-2$). The central frequency increased from 0.75 Hz to 1 Hz between 04.00 UT and 07.00 UT and then decreased from 1 Hz to 0.75 Hz between 07.00 UT and 10.00 UT. At the beginning of the event (~ 04 UT) $\tau_{st} = 97$ s, in the middle (~ 07 UT) $\tau_{middle} = 83$ s, and at the end of the series (~ 10 UT) $\tau_{end} = 104$ s. Correspondingly, $(\tau f)_{st} = 78$, $(\tau f)_{middle} = 83$ and $(\tau f)_{end} = 78$.

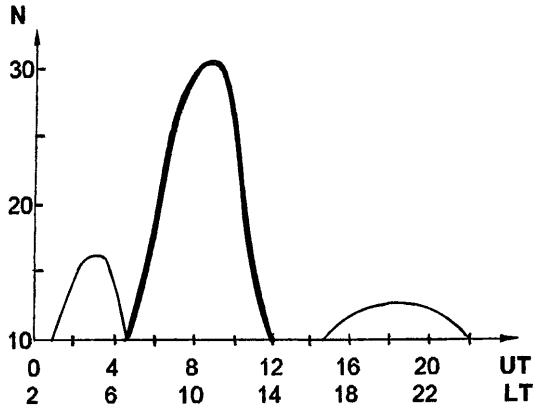


Fig. 5. The diurnal variation of the occurrence of Pc1s with decreasing central frequency (*bold line*) and with increasing frequency (*thin line*)

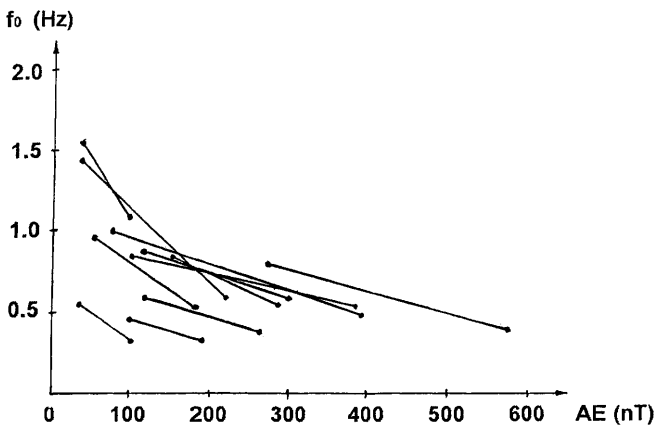


Fig. 6. The frequency variation of the late morning and prenoon nonstationary pulsations with AE-index

Now let us consider events with time-independent f_0 . We have investigated about 50 cases which are characterised by a constant central frequency and a constant repetition period during the event. All such events were observed during very low magnetic activity ($K_p \approx 1$). A typical example of such a Pc1 pearl event is shown in Fig. 7. This event is characterised by $f_0 = 0.54$ Hz, $\tau = 290$ s and $K_p = 1$.

3 Discussion

The diurnal variation of the nonstationary Pc1 events shows that the events exhibiting a decrease in the central frequency are mainly observed in the late morning and at noon, while those with increasing central frequency appear after midnight and in the afternoon. The idea which allows us to understand the diurnal distribution of nonstationary Pc1s is connected with the drift of energetic protons in the equatorial plane during substorm activity. The trajectories of protons drifting in the magnetosphere depend on convection and corotation electric fields as well as on the proton diamagnetic drift. The convection electric field \mathbf{E} in the dawn-dusk direction is increased near the 23.00 LT with a longitu-

dinal extent of several hours (Nishida, 1978). During the substorm growth phase this field gradually increases. The protons injected in the night sector undergo the $\mathbf{E} \times \mathbf{B}$ drift to the region of increasing magnetic field (towards the Earth). This longitudinal sector extends from early morning to late evening hours. In the dayside the magnetospheric dawn-dusk electric field produces the drift of energetic protons to the region of decreasing magnetic field (outward drift). The calculations of entire trajectories of protons moving due to the $\mathbf{E} \times \mathbf{B}$ and diamagnetic drifts after injection in the nightside have been provided by Chen (1970), and Lyons and Samson (1992). These authors showed that during the early morning and late evening hours the protons are drifting towards the Earth, i.e. to the region of increased magnetic field, while in the day sector they move predominantly outwards (from the Earth).

Let us now consider parameters which control the variation of the Pc1 central frequency. The latter corresponds to the maximum of the wave growth rate (Cornwall, 1965) given by

$$f_0 \approx f_p c_A / v_T, \quad (1)$$

where f_p is the equatorial proton gyrofrequency, c_A the Alfvén velocity and v_T the proton thermal velocity.

According to Eq. (1) the central frequency depends on the L -shell value (the McIlwain parameter). To demonstrate this we note that $f_p \propto B$, and $c_A \propto B/\sqrt{n}$, where n is the plasma number density. For adiabatic motions the thermal proton velocity scales as \sqrt{B} . On the other hand, the plasma number density varies in the dayside magnetosphere as $n \propto L^{-2}$ for a saturated plasmasphere and $n \propto L^{-4.5}$ for plasma trough (Carpenter and Anderson, 1992). Assuming a dipole field geometry, the magnetic field intensity scales as $\propto L^{-3}$. Using these scaling laws we obtain the following approximate variation for the central frequency with L : $f_0 \propto L^{-3.5}$ for saturated plasmasphere and $f_0 \propto L^{-2.25}$ for plasma trough.

The dependence of the central frequency on L -value allows us to evaluate the value of the electric field using the observed variation of pearl pulsation frequency (Troitskaya *et al.*, 1968; Lacourly, 1969). We assume that the variation of the central frequency arises from the radial drift of Pc1 source across L -shells with velocity $|v_d| = E/B$. The latter can be estimated as $|v_d| = R_E d_t L$, where R_E is the Earth's radius and d_t stands for the derivative d/dt . Taking the time derivative from Eq. (1) we obtain

$$|v_d| = (R_E L / 3.5) d_t \ln f_0, \quad (2)$$

for the saturated plasmasphere and

$$|v_d| = (R_E L / 2.25) d_t \ln f_0, \quad (3)$$

for the plasma trough profile.

With the help of Eqs. (2) and (3) the electric field (in V/m) can now be evaluated as

$$E \approx (\alpha / L^2) d_t \ln f_0, \quad (4)$$

where $\alpha \approx 60$ for the saturated plasmasphere and $\alpha \approx 90$ for the plasma trough.

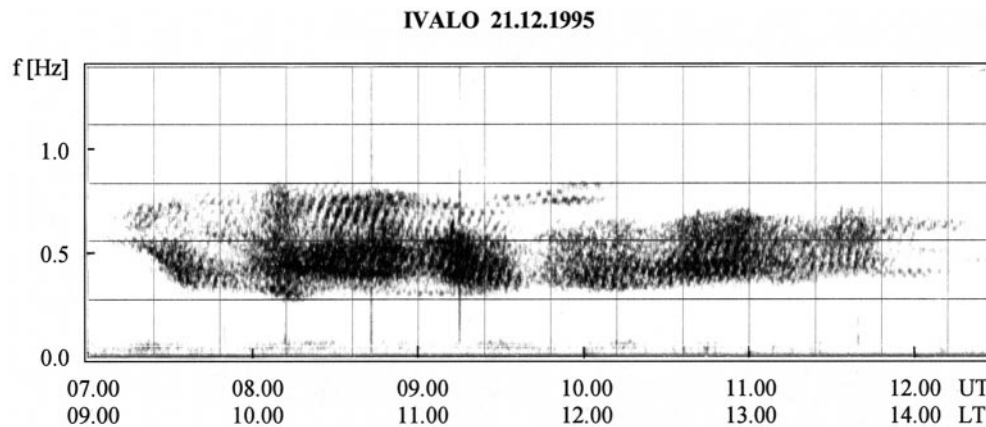


Fig. 7. The sonagram of Pc1 pulsations observed at Ivalo on December 21, 1995, depicting a quasi-stationary central frequency and repetition structure

From Figs. 1 and 2 for $L = 5$ we obtain $E \approx 10^{-4}$ V/m for saturated plasmasphere and $E \approx 1.5 \times 10^{-4}$ V/m for the plasma trough. The values for E in the equatorial plane of the magnetosphere correspond to the average electric fields measured by GEOS-1 (Pedersen *et al.*, 1978). These authors noted that local regions exist where electric fields and corresponding plasma flows have values above the average. Such phenomena may normally be responsible for the formation of nonstationary Pc1 pulsations during substorm activity.

4 Conclusions

We have discussed the formation of nonstationary Pc1 pulsations and shown that nonstationary Pc1s are related to simultaneous magnetic activity. The events exhibiting a decrease in wave frequency are mostly observed in the late morning and at noon, while events with increasing frequency are observed either in the post-midnight to early morning hours, or in late afternoon hours. Such a daily variation is probably due to the impact of quasi-static electric fields on the motion of the Pc1 source. In fact, the existence of the dawn-to-dusk electric field leads to the motion of the Pc1 source away from the Earth in the dayside magnetosphere and towards to the Earth in the nightside. This results in a decrease in Pc1 central frequency in the dayside and to a corresponding increase during early morning and late evening hours. The behaviour of τ during the events also agrees with this scenario. We evaluated the magnetospheric electric field E responsible for the movement of the Pc1 source and found the value of $E \approx (0.5 \div 2.5) \times 10^{-4}$ V/m which is in reasonable agreement with the average electric fields measured by the GEOS-1 satellite. Thus, we have suggested and derived an interesting result (magnetospheric diagnosis) that it is possible to extract an indirect estimate of the convection electric field in the equatorial magnetosphere using ground observations of Pc1 pearl pulsations.

Acknowledgements. We acknowledge financial support from the Academy of Finland, and the Commission of the European Union (grant no. INTAS-96-2064). One of us (O.A.P.) wishes to thank the French Ministère de la Recherche et de la Technologie for hospitality at LPCE where this work was completed. The authors

wish to thank Prof. A. V. Guglielmi and Dr. A. S. Potapov for valuable comments.

Topical Editor G. Chanteur thanks M. Balikhin, K. Hayashi and S. Perraut for their help in evaluating this paper.

References

- Campbell, W. H.**, Low attenuation of hydromagnetic waves in the ionosphere and implied characteristics in the magnetosphere for Pc1 events, *J. Geophys. Res.*, **72**, 3429–3446, 1967.
- Carpenter, D. L., and R. R. Anderson**, An ISEE/whistler model of equatorial electron density in the magnetosphere, *J. Geophys. Res.*, **97**, 1097–1108, 1992.
- Chen, A. J.**, Penetration of low-energy protons deep into the magnetosphere, *J. Geophys. Res.*, **75**, 2458–2467, 1970.
- Cornwall, J. M.**, Cyclotron instability and electromagnetic emission in the ultra low frequency and very low frequency ranges, *J. Geophys. Res.*, **70**, 61–69, 1965.
- Feygin, F. Z., and V. L. Yakimenko**, Mechanism of “pearl” generation and development by cyclotron instability of the outer proton zone, *Geomagn. Aeron.*, **9**, 565–569, 1969.
- Feygin, F. Z., M. B. Gokhberg, and E. T. Matveeva**, Comparison of satellite data with the occurrence of Pc1 pulsations, *Ann. Geophysicae*, **26**, 903–906, 1970.
- Fraser, B. J.**, Temporal variations in Pc1 geomagnetic pulsations, *Planet. Space Sci.*, **16**, 111–124, 1968.
- Gendrin, R., S. Lacourly, A. Roux, J. Solomon, F. Z. Feygin, M. B. Gokhberg, V. A. Troitskaya, and V. L. Yakimenko**, Wave packet propagation in the amplifying medium and its application to the dispersion characteristics and to the generation mechanisms of Pc1 events, *Planet. Space Sci.*, **19**, 165–194, 1971.
- Guglielmi, A. V., and O. A. Pokhotelov**, *Geoelectromagnetic waves*, IOP Publishers, Bristol, 1996.
- Jacobs, J. A., and T. Watanabe**, Micropulsation whistlers, *J. Atmos. Terr. Phys.*, **26**, 825–829, 1964.
- Kangas, J., A. V. Guglielmi, and O. A. Pokhotelov**, Morphology and physics of short-period magnetic pulsations (a review), *Space Sci. Rev.*, **83**, 435–512, 1998.
- Kennel, C. F., and H. E. Petschek**, Limit on stably trapped particles fluxes, *J. Geophys. Res.*, **71**, 1–28, 1966.
- Lacourly, S.**, Evaluation de certains paramètres de la magnétosphère à partir des propriétés des pulsations hydromagnétiques irrégulières (S.I.P. et I.P.D.P.), *Ann. Geophysicae*, **25**, 651–657, 1969.
- Lyons, L. R., and J. C. Samson**, Formation of the stable auroral arc that intensifies at substorm onset, *Geophys. Res. Lett.*, **19**, 2171–2174, 1992.
- Matveeva, E. T., A. L. Kalisher, and B. V. Dovbnya**, Physical conditions in the magnetosphere and the interplanetary space during excitation of type Pc1 geomagnetic pulsations, *Geomagn. Aeron.*, **12**, 977–978, 1972.

- Nishida, A.**, *Geomagnetic diagnosis of the magnetosphere*, Springer, New York Heidelberg Berlin, 1978.
- Obayashi, T.**, Hydromagnetic whistlers, *J. Geophys. Res.*, **70**, 1069–1078, 1965.
- Pedersen, A., R. Grard, K. Knott, D. Jones, and A. Gofalone**, Measurements of quasi-static electric fields between 3 and 7 Earth radii on GEOS-1, *Space Sci. Rev.*, **22**, 333–346, 1978.
- Plyasova-Bakounina, T. A., and E. T. Matveeva**, Relationship between pulsations of Pc 1 type and magnetic storms, *Geomagn. Aeron.*, **8**, 153–155, 1968.
- Sucksdorff, E.**, Occurrences of rapid micropulsations at Sodankylä during 1932 to 1935, *Terrestr. Magn. Atmosp. Electr.*, **41**, 337–344, 1936.
- Troitskaya, V. A., R. V. Schepetnov, and A. V. Guglielmi**, Estimate of electric fields in the magnetosphere from the frequency drift of micropulsations, *Geomagn. Aeron.*, **8**, 634–635, 1968.
- Wentworth, R. C.**, Enhancement of hydromagnetic emissions after geomagnetic storms, *J. Geophys. Res.*, **69**, 2291–2298, 1964.