



Biases in atmospheric CO₂ estimates from correlated meteorology modeling errors

S. M. Miller¹, M. N. Hayek¹, A. E. Andrews², I. Fung³, and J. Liu⁴

¹Department of Earth and Planetary Sciences, Harvard University, Cambridge, MA, USA

²Global Monitoring Division, Earth Systems Research Laboratory, National Oceanic and Atmospheric Administration, Boulder, CO, USA

³Department of Earth and Planetary Sciences, University of California Berkeley, Berkeley, CA, USA

⁴Earth Science Division, Jet Propulsion Laboratory, NASA, Pasadena, CA, USA

Correspondence to: S. M. Miller (scot.m.miller@gmail.com)

Received: 18 August 2014 – Published in Atmos. Chem. Phys. Discuss.: 15 September 2014

Revised: 8 February 2015 – Accepted: 24 February 2015 – Published: 13 March 2015

Abstract. Estimates of CO₂ fluxes that are based on atmospheric measurements rely upon a meteorology model to simulate atmospheric transport. These models provide a quantitative link between the surface fluxes and CO₂ measurements taken downwind. Errors in the meteorology can therefore cause errors in the estimated CO₂ fluxes. Meteorology errors that correlate or covary across time and/or space are particularly worrisome; they can cause biases in modeled atmospheric CO₂ that are easily confused with the CO₂ signal from surface fluxes, and they are difficult to characterize. In this paper, we leverage an ensemble of global meteorology model outputs combined with a data assimilation system to estimate these biases in modeled atmospheric CO₂. In one case study, we estimate the magnitude of month-long CO₂ biases relative to CO₂ boundary layer enhancements and quantify how that answer changes if we either include or remove error correlations or covariances. In a second case study, we investigate which meteorological conditions are associated with these CO₂ biases.

In the first case study, we estimate uncertainties of 0.5–7 ppm in monthly-averaged CO₂ concentrations, depending upon location (95 % confidence interval). These uncertainties correspond to 13–150 % of the mean afternoon CO₂ boundary layer enhancement at individual observation sites. When we remove error covariances, however, this range drops to 2–22 %. Top-down studies that ignore these covariances could therefore underestimate the uncertainties and/or propagate transport errors into the flux estimate.

In the second case study, we find that these month-long errors in atmospheric transport are anti-correlated with temperature and planetary boundary layer (PBL) height over terrestrial regions. In marine environments, by contrast, these errors are more strongly associated with weak zonal winds. Many errors, however, are not correlated with a single meteorological parameter, suggesting that a single meteorological proxy is not sufficient to characterize uncertainties in atmospheric CO₂. Together, these two case studies provide information to improve the setup of future top-down inverse modeling studies, preventing unforeseen biases in estimated CO₂ fluxes.

1 Introduction

Scientists increasingly use atmospheric CO₂ observations to estimate CO₂ fluxes at Earth's surface (e.g., Gurney et al., 2002; Michalak et al., 2004; Peters et al., 2007; Gourdji et al., 2012). This “top-down” approach contrasts with “bottom-up” studies that rely primarily on expert knowledge of biological processes (e.g., Huntzinger et al., 2012; Raczka et al., 2013). In order to estimate the fluxes, top-down studies typically require a meteorology model to link fluxes at the surface with measurements taken downwind. Using this link, one can estimate the fluxes even if the atmospheric measurements do not themselves directly measure the fluxes.

However, both the accuracy and effective resolution of the flux estimate hinge upon the accuracy of the meteorological

model. Errors in the meteorological model may (or may not) bias estimated CO₂ fluxes depending upon the error characteristics and the space/timescales of interest.

More specifically, the effect of CO₂ transport errors on the estimated fluxes depends upon two important factors. First, the flux estimate becomes more uncertain as the CO₂ transport error variance (or standard deviation) increases. Top-down studies that use Bayesian statistics will explicitly account for these variances when estimating fluxes (e.g., Enting, 2002; Tarantola, 2005); before estimating the fluxes, the modeler first estimates the total variance due to an array of model or data errors – due to imperfect atmospheric transport or imperfect measurements, among many other sources of error (e.g., Gerbig et al., 2003; Michalak et al., 2005; Ciais et al., 2011).

Second, the flux estimate becomes more uncertain as the temporal and/or spatial error covariances increase. As the covariances increase, each CO₂ measurement effectively provides less and less independent information to constrain the surface fluxes. Furthermore, these temporally and/or spatially correlated errors can bias the flux estimate over a region or over the entire geographic area of interest (e.g., Stephens et al., 2007).

Quantification of this complex cause-and-effect between meteorological errors and errors in estimated CO₂ fluxes represents an ongoing research challenge, and a number of existing studies have characterized different aspects of these uncertainties. For example, a series of studies known as TransCom (Atmospheric Tracer Transport Model Intercomparison) represents one of the first coordinated projects on CO₂ transport uncertainties (Gurney et al., 2002; Baker et al., 2006). These early studies used 13 different global atmospheric models and compared differences in top-down CO₂ budgets due to atmospheric model differences. Subsequent to the TransCom project, a number of studies have focused on the effects of changing vertical mixing and/or planetary boundary layer height (PBLH) (Gerbig et al., 2008; Williams et al., 2011; Kretschmer et al., 2012, 2014; Parazoo et al., 2012; Pino et al., 2012). In general, those papers found that uncertainties in PBLH can lead to biases of ~ 3 ppm in modeled daytime CO₂. Another paper examined the effect of uncertain horizontal winds (Lin and Gerbig, 2005). The authors applied a particle-trajectory model at a measurement site in Wisconsin and found that uncertainties in the horizontal winds contributed ~ 6 ppm (standard deviation) to the overall CO₂ transport uncertainty. In summary, a number of previous studies have either perturbed individual meteorological parameters or, in the case of TransCom, sampled transport uncertainties using 13 preselected atmospheric models.

The present study is particularly concerned with temporal and/or spatial error covariances in atmospheric CO₂ transport. To what extent do CO₂ transport errors covary in space and time? How large are these covariances relative to the magnitude of the surface CO₂ fluxes, and which meteorological factors drive large error covariances? These covariances

are often difficult to characterize (e.g., Lin and Gerbig, 2005; Lauvaux et al., 2009) and are omitted from most existing top-down efforts.

We explore several facets of these questions using a global meteorology model ensemble and a meteorology data assimilation system – the Community Atmosphere Model (CAM) and a Local Ensemble Transform Kalman Filter (LETKF) (Hunt et al., 2007). Efforts by Liu et al. (2011) and Liu et al. (2012) extended this meteorological framework to model uncertainties in atmospheric CO₂.

This framework systematically estimates meteorology and CO₂ transport uncertainties to an extent not previously possible; CAM-LETKF explicitly represents the CO₂ transport uncertainties that remain after assimilating several hundred thousand meteorology observations at each 6 h model time step. To accomplish this task, CAM-LETKF uses an ensemble of weather forecasts and optimizes the ensemble to match available meteorological observations. Furthermore, CAM-LETKF adjusts the variance of the weather ensemble at each time step to match the modeling uncertainties implied by the meteorological observations.

Using this toolkit, we construct several case studies to understand both the possible magnitude and drivers of CO₂ transport error covariances – errors that persist over many time steps and/or across large regions. The next section describes CAM-LETKF and these case studies in greater detail.

2 Methods

2.1 The meteorology and CO₂ model

The first component of CAM-LETKF is the meteorological model. We simulate global meteorology using CAM and the Community Land Model (CLM, version 3.5) run in weather forecast mode (not climate mode) (Collins et al., 2006; Oleson et al., 2008; Chen et al., 2010). Model simulations in this study have a spatial resolution of 2.5° longitude by 1.9° latitude with 26 vertical model levels. In most regions, there are three vertical model levels within the lowest kilometer of the atmosphere. These model levels are centered at 929.6, 970.6, and 992.6 hPa over regions where the land/water surface is at sea level.

We save the global model output at 6 h time increments. Furthermore, we run the model for two time periods: January–February 2009 and May–July 2009. The first month of each run serves as an initial spin-up for the model–data assimilation system. The next section describes this assimilation in greater detail.

2.2 The meteorological model–data assimilation framework

The second component of CAM-LETKF is the data assimilation and model optimization framework. This framework serves two purposes. First, the LETKF optimizes modeled

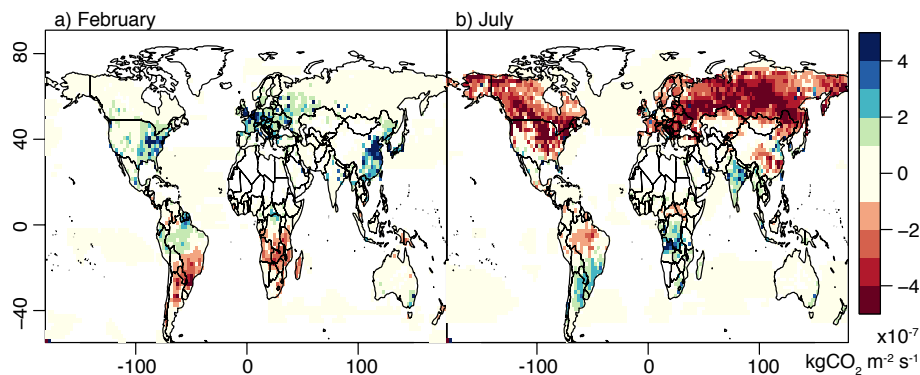


Figure 1. Average CarbonTracker CO₂ fluxes (version 2011oi) for (a) February and (b) July 2009. The fluxes include biosphere, ocean, fossil fuel, and biomass burning fluxes (http://www.esrl.noaa.gov/gmd/ccgg/carbontracker/CT2011_oi).

meteorology (CAM-CLM) to match available observations. Second, the LETKF uses an ensemble of model forecasts to represent model uncertainties that remain after data assimilation (Hunt et al., 2004, 2007). We define each ensemble member and the mean of the entire ensemble as follows:

$$\mathbf{x}_i = \bar{\mathbf{x}} + \mathbf{X}_i \quad \text{where } i = 1 \dots k, \quad (1)$$

where \mathbf{x}_i ($m \times 1$) is a single model ensemble member, $\bar{\mathbf{x}}$ ($m \times 1$) is the mean of the model ensemble, and \mathbf{X}_i ($m \times k$) refers to the i th column of the matrix that defines the ensemble spread. In this paper, the variable m refers to the total number of model parameters – the model estimate for a variety of meteorological variables, concatenated across the globe and across all 6-hourly time steps in a given model run. Furthermore, we use $k = 64$ total ensemble members in this setup, as was done in Liu et al. (2011) and Liu et al. (2012).

Using this ensemble, CAM-LETKF steps through time in sequential 6 h intervals. First, the model ensemble at time t is optimized to match meteorological data (Hunt et al., 2007). To this end, we assimilate the same meteorological observations used in the National Centers for Environmental Prediction – Department of Energy reanalysis 2 (Kanamitsu et al., 2002): temperature (in situ and satellite), zonal wind (in situ and satellite), meridional wind (in situ and satellite), surface pressure (in situ), and specific humidity (in situ). At each 6 h model time step, we assimilate between $\sim 180\,000$ and $330\,000$ observations globally. At that juncture, the ensemble mean associated with time t , $\bar{\mathbf{x}}(t)$, represents the model best guess and the ensemble members, $\bar{\mathbf{x}}(t) + \mathbf{X}(t)$, collectively represent the uncertainties in the modeled meteorology (i.e., posterior variances and covariances). Second, we run 6 h CAM-CLM forecasts using these realizations as initial conditions – a total of 64 model forecasts. The 6 h cycle of data assimilation and model forecast then begins again.

This model ensemble, by design, is guaranteed to reflect actual uncertainties in modeled meteorology; at each 6 h model time step, we adjust the ensemble variance such that this variance matches against the model–data residuals (Li

et al., 2009; Miyoshi, 2011). The Supplement describes this procedure, known as adaptive covariance inflation.

The model ensemble also accounts for both spatial and temporal covariances in modeled meteorological uncertainties; meteorological errors within one ensemble member can easily persist over many time steps. This continuity occurs because the optimized ensemble members from the one time step become the initial conditions for the weather forecast at the next time step. For example, if the PBL height in one ensemble member is lower than the ensemble average at a given time step, it will likely be lower than average at the next time step. Similarly, if the PBL height in one ensemble member is lower than average over one grid box, it will likely also be lower than the average over an adjacent grid box.

Certain meteorological uncertainties, however, may not always be captured by the assimilation system, particularly uncertainties that do not manifest in the model–data residuals. For example, CAM-LETKF will not fully characterize uncertainties due to different PBL schemes (e.g., Yonsei versus Mellor–Yamada–Janjic) or due to other structural model differences. Furthermore, LETKF cannot spatially resolve uncertainties that occur at sub-grid scale (e.g., turbulent eddies or numerical diffusion). For further technical detail on the LETKF and adaptive covariance inflation, refer to the Supplement, Hunt et al. (2004, 2007), Li et al. (2009), Liu et al. (2011), or Miyoshi (2011).

2.3 CO₂ transport error variances and covariances

The CAM-LETKF system described above estimates not only meteorological uncertainties but also uncertainties in CO₂ transport. In this study, CO₂ is a passive tracer that is not part of the data assimilation, so any uncertainties in CO₂ concentrations are solely due to uncertainties in atmospheric transport.

We drive all model simulations with a published CO₂ flux estimate from CarbonTracker (CT), version CT2011oi (Fig. 1; Peters et al., 2007, <http://carbontracker.noaa.gov>). CT is a commonly used global CO₂ flux estimate created

by the US National Oceanic and Atmospheric Administration (NOAA). NOAA scientists optimize CT fluxes to match atmospheric CO₂ data, so the flux estimate is consistent with actual observations (Peters et al., 2007). The original CT fluxes have a temporal resolution of 3 h. We average these fluxes to a 6 h resolution for all of the CAM simulations in this study.

We subsequently estimate 6-hourly CO₂ transport uncertainties using this setup. These uncertainties are defined as the difference between the top and bottom of the 95 % confidence interval, computed from the 64 model realizations (e.g., Fig. 2). To make this estimate, we calculate the 2.5th and 97.5th percentiles of each row in $\mathbf{X}_{[\text{CO}_2]}$, where the subscript [CO₂] refers to the atmospheric CO₂ concentrations estimated by the ensemble. The remainder of the methods section applies this CO₂ and meteorology modeling framework to two case studies.

2.4 Case study 1: the magnitude of temporally and spatially covarying atmospheric transport errors relative to a CO₂ flux estimate

This case study explores the importance of persistent, covarying transport errors and the magnitude of those errors relative to the CO₂ fluxes. In particular, we estimate uncertainties in monthly mean, afternoon, modeled CO₂ concentrations at a number of in situ atmospheric observation sites. In one case, we include temporal and/or spatial covariances in the atmospheric transport errors, and in another case we remove these covariances. We then compare these uncertainties against the modeled afternoon CO₂ boundary layer enhancement to understand the magnitude of these errors relative to the surface fluxes.

The uncertainty in monthly-averaged CO₂ concentrations serves as a measure of how transport errors correlate or covary across time. Uncorrelated transport errors will average out, to a large degree, over many model time steps, but temporal error covariances prevent the errors from averaging down over time. Furthermore, CO₂ budgets are often reported in month-long increments (e.g., Gourdji et al., 2012, and CT), so this time window is a relevant benchmark with respect to inverse modeling studies.

We calculate uncertainties in the monthly-averaged model output (including error covariances) via several steps. First, we select out the rows of $\mathbf{X}_{[\text{CO}_2]}$ that correspond to afternoon observations (13:00–19:00 LT) for a given month at an in situ CO₂ observation site. Second, we calculate the mean of each column in $\mathbf{X}_{[\text{CO}_2]}$. Each column corresponds to a different ensemble member. The resulting vector of length 64 is the difference between each ensemble member and the best estimate (\bar{x}), averaged at the monthly scale. Lastly, we use this vector to compute a confidence interval in monthly-averaged, modeled CO₂ (the 97.5th minus 2.5th percentiles).

We subsequently remove covariances in the CO₂ transport errors and recalculate uncertainties in the monthly-averaged

CO₂ concentrations. As described in Sect. 2.2, errors in one ensemble member can persist over many steps and can persist across a large geographic region. However, we can remove these error covariances by randomly reshuffling the elements of each individual row in $\mathbf{X}_{[\text{CO}_2]}$. The variance in modeled concentrations in any row or at any given time step will remain the same. However, each column will no longer represent a single ensemble member. Rather, each column will represent a random assortment of different ensemble members, and the errors in each column will no longer covary from one time step to another or one geographic location to another.

We conduct this analysis at a representative selection of observation sites in North America, Asia, and Europe. This setup indicates how errors covary with time at the monthly scale. In addition, we also conduct the analysis using multiple observation sites; we estimate monthly-averaged uncertainties at the eco-region scale and include all observation sites that lie within the given eco-region. This latter approach indicates how errors covary spatially across multiple sites at the regional scale.

These monthly-averaged uncertainties can then be compared against the afternoon, modeled CO₂ increment from regional surface fluxes. To estimate this increment, we subtract modeled free troposphere, “clean air” concentrations at 600 hPa from concentrations modeled at the surface using CT fluxes. The concentrations at 600 hPa are not necessarily a perfect measure of clean air concentrations. Rather, this approach is an approximation similar to that used by inverse modeling studies in the literature (e.g., Gerbig et al., 2003; Gourdji et al., 2012).

In summary, case study one explores the magnitude of persistent atmospheric CO₂ transport errors or error covariances relative to the afternoon CO₂ signal from surface fluxes. The next case study, in contrast, explores the meteorological conditions under which these persistent CO₂ transport errors may be more likely to occur.

2.5 Case study 2: which meteorological factors may be associated with month-long transport biases?

We create a synthetic experiment to explore the meteorological conditions under which month-long model biases in atmospheric transport may occur. The spatial patterns in the CO₂ transport uncertainties are heavily influenced by spatial patterns in the CO₂ fluxes (Fig. 2). In other words, regions with large fluxes or large diurnal flux variability also show higher CO₂ transport uncertainties. As a result, it is difficult to disentangle the effect of different meteorological parameters on CO₂ transport uncertainties. Instead, we create a synthetic tracer with constant global emissions in both space and time. This experiment serves as a lens to explore the possible effects of different meteorological parameters independent of the spatiotemporal variability in CO₂ fluxes.

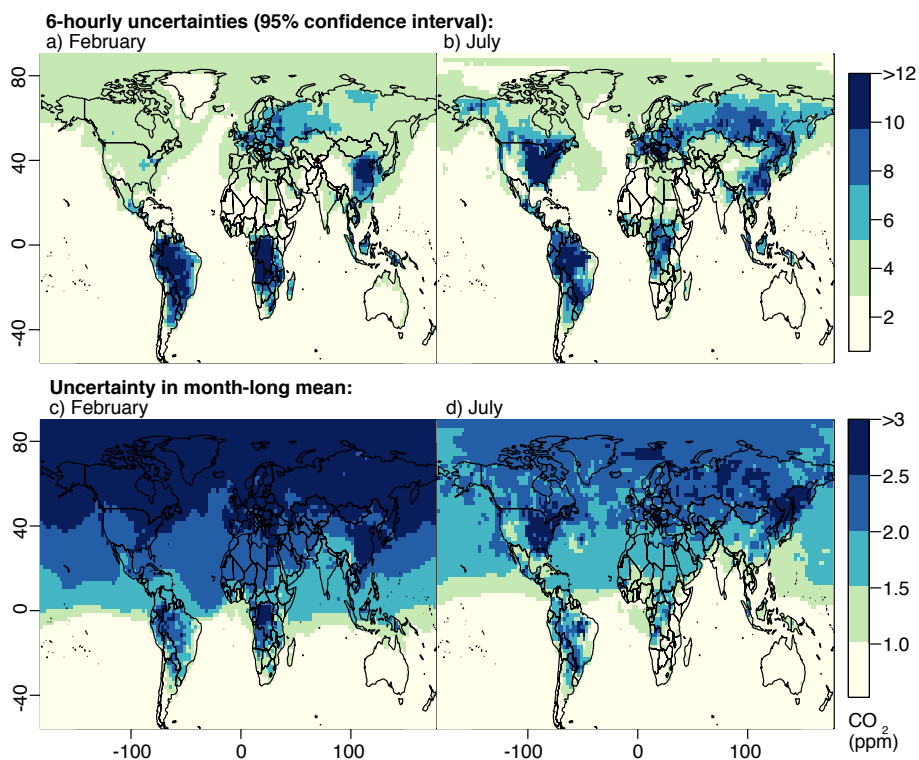


Figure 2. The top panels display average 6-hourly CO₂ transport uncertainties estimated by CAM-LETKF. The uncertainties (95 % confidence intervals) are for the surface model layer for (a) February and (b) July 2009. The bottom panels (c and d), in contrast, display the uncertainties in month-long averaged surface CO₂ concentrations. Note that these plots include model output from all 24 h of each day. The Supplement provides analogous figures for daytime- or nighttime-only model output.

To this end, we initialize CAM-LETKF runs with zero atmospheric concentration of this synthetic tracer and then run CAM-LETKF forward for 1 month using constant global emissions (e.g., for both February and July 2009). Any uncertainties in the atmospheric distribution of this tracer are solely due to meteorological parameters, not due to the spatial distribution of the underlying fluxes.

Next, we calculate the coefficient of variation (CV) associated with the monthly-averaged surface concentrations. The CV is an inverted signal-to-noise ratio; it measures the uncertainty in modeled surface concentrations relative to the average surface concentration ($\frac{\sigma}{\mu}$). For example, an uncertainty of 1 ppm in modeled concentrations is most problematic if the signal from surface fluxes is weak, and a 1 ppm uncertainty is less problematic if the signal from surface sources and/or sinks is strong.

For this setup, the CV equals the standard deviation in the monthly-averaged surface concentrations divided by the monthly surface concentration averaged across all 64 realizations. We then plot the tracer CV against monthly-averaged meteorological parameters and their associated uncertainties from CAM-LETKF. These relationships give insight into the meteorological conditions or meteorological uncertainties that are associated with month-long biases in the modeled synthetic tracer.

3 Results and discussion

3.1 Uncertainties in the 6-hourly modeled CO₂ concentrations

Before examining the two case studies in detail, we first provide context on the CO₂ transport uncertainties estimated with CT fluxes and CAM-LETKF. Figure 2a and b visually summarize the average 6-hourly CO₂ transport uncertainties in the model surface layer – the difference between the top and bottom of the 95 % confidence intervals. These figures show how CO₂ transport uncertainties vary across the globe – from 0.6 to 26 ppm, depending on location. Furthermore, the transport uncertainties in Fig. 2a and b show several distinctive features. The largest uncertainties are localized to regions where either the magnitude or the diurnal cycle of the CT fluxes is largest (e.g., the US Eastern Seaboard and southern Siberia during summertime, the Amazon, the Congo, and eastern China). CO₂ transport uncertainties in the eastern US and eastern Asia bleed, to a smaller degree, over the adjacent ocean where surface fluxes are small.

Figure 3 places these transport uncertainties in context of CO₂ data measured at two observation sites in the United States. These time series plots validate the model's capacity to simulate daily variations in CO₂ concentrations. Further-

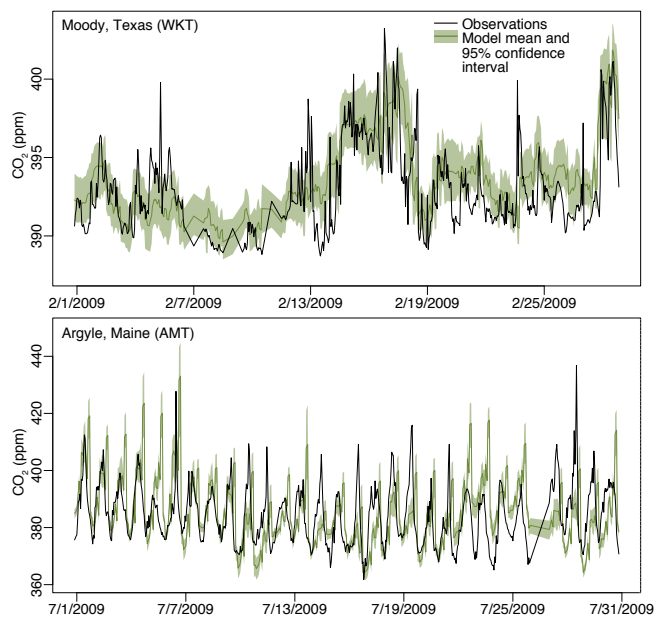


Figure 3. Hourly-averaged CO₂ measurements at (a) Moody, Texas, and (b) Argyle, Maine, compared against the CAM-LETKF model ensemble. Measurements are from the top inlet height at each location. In this figure, the model ensemble represents uncertainties due to atmospheric transport but not other errors (e.g., due to the fluxes and model resolution).

more, the comparison illustrates the magnitude of the CO₂ transport uncertainties relative to the diurnal cycle in CO₂ concentrations. For example, the uncertainties at AMT in July are $\sim 30\%$ of the diurnal range in the CO₂ measurements. Overall, the model ensemble depicted in these plots usually encapsulates the hourly-averaged measurements. CT fluxes are estimated using these CO₂ observations and the TM5 transport model (Tracer Model, version 5) (Peters et al., 2007), so one might expect the CAM model to fit the CO₂ observations relatively well. In the instances when the model ensemble does not encapsulate the hourly-averaged CO₂ measurements, one of the many other non-transport error types could be to blame; the ensemble spread only encompasses transport errors and does not include measurement errors, errors due to finite-model resolution, or errors in the fluxes. Furthermore, these instances could be due to structural differences between CAM and TM5, including differences in model resolution. The Supplement provides more example CO₂ model–data comparisons, meteorology model validation, and data assimilation diagnostics.

3.2 CO₂ transport uncertainties at longer timescales

The uncertainty in monthly-averaged CO₂ concentrations provides one measure of how transport errors persist over time, as discussed in Sect. 2.4. Figure 2c and d display uncertainties in the month-long average surface concentrations for February and July 2009. In contrast to the 6-hourly uncer-

tainties, these uncertainties are far more spatially distributed. This result implies that CO₂ transport errors covary over longer periods of time in remote regions, compared to regions with large surface fluxes. Observation sites that are far from large fluxes are therefore more likely to produce a biased CO₂ budget than sites near large surface fluxes. These “remote” sites see a lower CO₂ signal from surface fluxes, and the transport errors at these locations generally covary over longer periods of time.

A number of factors may explain these relatively large error covariances in remote regions. CO₂ transport over remote or oceanic regions is likely dominated by synoptic-scale weather patterns that evolve over multi-day time periods. When CO₂ is transported across the oceans or remote areas from source/sink regions, atmospheric CO₂ transport errors would likely covary at timescales characteristic of this synoptic-scale air flow. Over large CO₂ source/sink regions, by contrast, atmospheric concentrations are likely influenced more strongly by processes that occur over smaller time periods – grid-scale winds or boundary layer mixing. In addition, sustained transport errors over regions of large biosphere flux would be more likely to cancel out at longer timescales – due to the diurnal cycle of biosphere CO₂ uptake and release.

In addition to remote and ocean regions, month-long transport uncertainties are also large across the entire Northern Hemisphere during February. A subsequent Sect. 3.4 explores possible reasons why these month-long biases occur.

3.3 Case study 1: the magnitude of temporally and spatially covarying atmospheric transport errors relative to a CO₂ flux estimate

We construct a case study to understand the importance of temporal and spatial error covariances relative to the magnitude of CO₂ surface fluxes. Figure 4 displays the results of this analysis for a selection of representative global CO₂ observation sites from Asia, Europe, and North America. The y axis of each bar plot indicates the difference between the top and bottom of the 95% confidence interval in monthly mean modeled concentrations. We first consider the results when covariances in atmospheric CO₂ transport errors are included in the analysis (dark blue bars) and then compare those results to a setup in which we remove these error covariances (light blue bars).

At this selection of sites, uncertainties in the monthly mean afternoon concentrations range from 1.6 to 2.8 ppm (dark blue bars). These uncertainties are lower at marine sites like RYO and TTA (see definitions in Fig. 4) and are higher at continental sites located near large biospheric fluxes, sites like FSD and WBI. Note that this analysis only considers estimated uncertainties due to meteorology. The capabilities of the atmospheric observations would deteriorate if other errors were included, such as those due to imperfect measurements or due to finite-model resolution (e.g., Gerbig et al., 2003; Masarie et al., 2011).

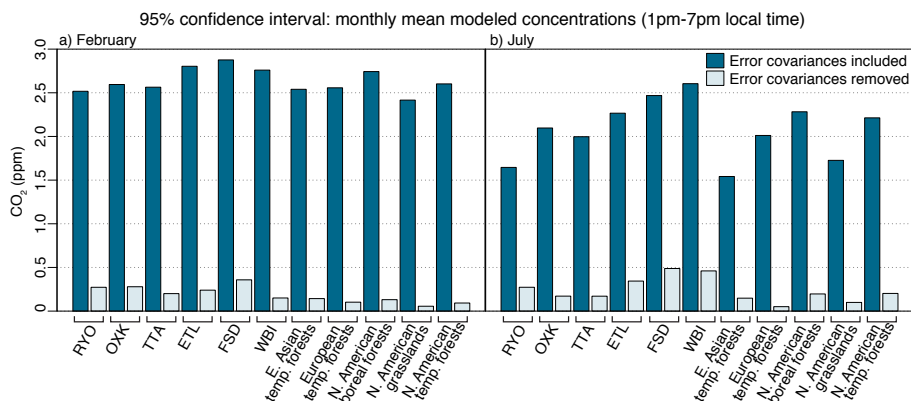


Figure 4. The uncertainties in monthly-averaged, afternoon atmospheric CO₂ (Sects. 2.4, 3.3) at a selection of representative, global CO₂ observation sites. Panels (a) and (b) show the results at each site for February and July 2009, respectively. Dark blue bars indicate the difference between the top and bottom of the 95 % confidence interval when we include error covariances. The light blue bars indicate the results when we remove these covariances in atmospheric transport errors. Observation sites in the figure include Ryori, Japan (RYO); Ochsenkopf, Germany (OXK); Talk Tower Angus, UK (TTA); East Trout Lake, Saskatchewan, Canada (ETL); Fraserdale, Ontario, Canada (FSD); and West Branch, Iowa, USA (WBI). For more information on these observation sites, refer to Table S1 in the Supplement.

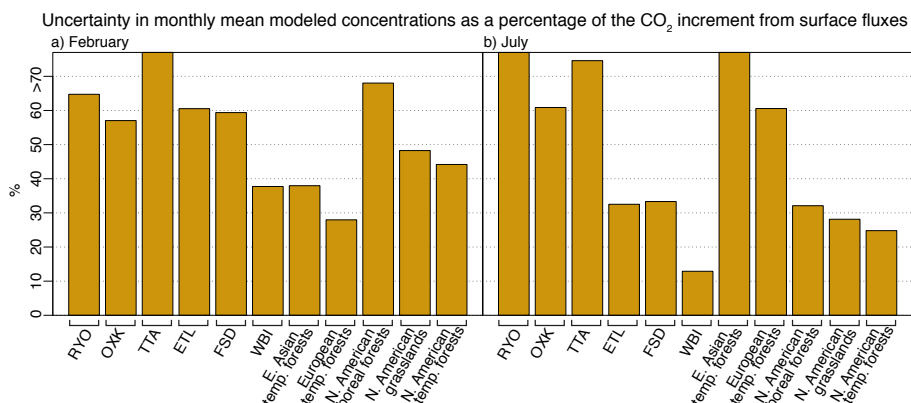


Figure 5. Uncertainty in monthly-averaged afternoon CO₂ concentrations as a percentage of the average afternoon CO₂ boundary layer enhancement. This figure places the uncertainties from Fig. 4 (dark blue bars) in context of the afternoon CO₂ increment from surface fluxes. Larger percentages indicate greater potential for bias in monthly CO₂ budgets estimated from atmospheric data.

We subsequently remove temporal covariances in the errors to identify the role that these covariances play in CO₂ transport uncertainties at the monthly scale. These results are displayed as light blue bars in Fig. 4. When we remove the covariances, the monthly-scale uncertainties are much smaller – by a factor of 5–20 at the individual observation sites. If CO₂ transport errors were temporally independent, then errors of opposite sign and different magnitude would cancel out to a degree when averaged over 1 month (light blue bars). Instead, the transport errors estimated by CAM-LETKF covary in time, and this covariance prevents the errors from averaging down (dark blue bars).

A multi-site comparison in Fig. 4 additionally indicates the role of spatial covariances in the transport errors; the figure shows the uncertainties in CO₂ concentrations when averaged across multiple observation sites within an eco-region.

We compute the monthly-average afternoon concentration across multiple sites for a given ensemble member. We then estimate a confidence interval based upon the distribution of the 64 ensemble members.

The results indicate a large degree of spatial covariance in the atmospheric CO₂ errors. If the errors had no spatial covariance, these errors would average down as more and more observation sites were added to the analysis. However, the dark blue bars in Fig. 4 have a similar magnitude irrespective of whether the analysis was conducted on an individual site or on a collection of many sites from an eco-region; the errors must therefore covary in space. In contrast, the light blue bars (i.e., error covariances removed) do decrease in magnitude at the eco-region scale relative to individual observation sites. In that case, the errors do average out when more and more sites are included in the analysis.

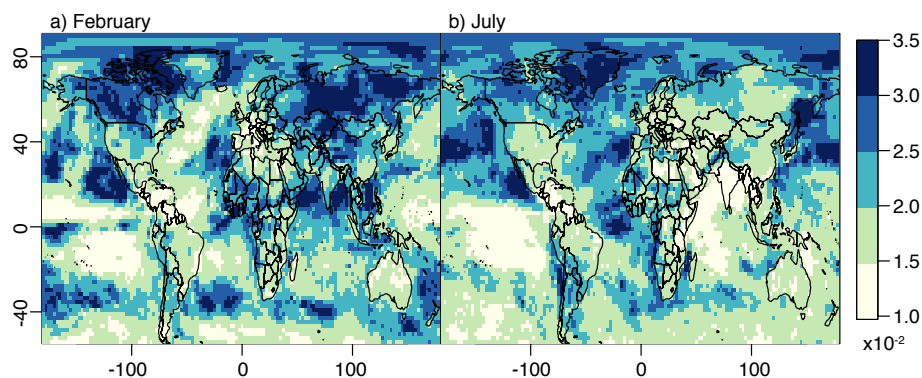


Figure 6. The coefficient of variation (CV, unitless) for the monthly-averaged model surface layer. The results plotted here are for the synthetic tracer simulation (Sects. 2.5, 3.4). In that simulation, the synthetic fluxes have a constant spatial distribution. The resulting CV (σ / μ) shows the distribution of month-long, surface-level transport uncertainties independent of the spatial distribution in the fluxes.

Figure 5 places the results of case study one in the context of the surface fluxes. This figure displays the uncertainties in atmospheric CO₂ transport (the dark blue bars in Fig. 4) as a fraction of the mean afternoon CO₂ boundary layer enhancement. As discussed in Sect. 2.4, this enhancement approximates the CO₂ increment due to regional surface fluxes, and a similar CO₂ increment is used by a number of top-down studies to estimate the surface fluxes. At the individual observation sites, the uncertainty in atmospheric CO₂ constitutes 13–150 % of the average boundary layer CO₂ enhancement. This percentage is highest at marine sites like RYO and TTA that see a relatively small boundary layer enhancement, and the relative magnitude of the uncertainties is smallest at sites that see a very large enhancement due to large summertime vegetation fluxes (e.g., at the WBI site). The uncertainties due to atmospheric transport are substantial relative to the fluxes but only when we include covariances in transport error. When we remove these covariances, the uncertainty in monthly-average afternoon concentrations drops to only 2–22 % of the boundary layer enhancement.

The results of this analysis hold several implications for future atmospheric inverse models and/or top-down studies that optimize CO₂ fluxes. Most existing inverse models account for atmospheric CO₂ transport errors in their statistical setup. In a Bayesian synthesis or geostatistical inverse model, for example, this information is incorporated into a covariance matrix, and that covariance matrix is used as an input to the equation that optimizes the CO₂ fluxes (e.g., Enting, 2002; Michalak et al., 2004; Ciais et al., 2011). However, the majority of existing studies assume that this covariance matrix is diagonal (i.e., no error covariances), in part, because these temporal and spatial covariances are challenging to estimate (e.g., Lin and Gerbig, 2005; Lauvaux et al., 2009). The present study, in contrast, indicates that both temporal and spatial error covariances play an important role in monthly-scale errors in atmospheric transport.

Ignoring these error covariances could lead to numerous challenges. When we add more data at an observation site or add more sites the analysis, the actual errors do not average down to the extent that uncorrelated errors would. Rather, adding more data or more observation sites provides more limited gains in accuracy. As a result, an inverse model that overlooks the error covariances will estimate uncertainties in the CO₂ fluxes that are too small, and/or the inverse model may erroneously map atmospheric transport errors onto the surface fluxes (e.g., Stephens et al., 2007). Future inverse modeling studies could better account for these uncertainties by including off-diagonal terms in one of the covariance matrices used by the inverse model.

The next case study (Sect. 3.4) explores the meteorological factors that may be associated with these persistent atmospheric transport errors.

3.4 Case study 2: which meteorological factors are associated with month-long atmospheric transport biases?

In this case study, we use a synthetic tracer experiment (Sect. 2.5) to uncover possible drivers of atmospheric transport biases at month-long timescales. The previous section (Sect. 3.3) explored the importance of covariances in atmospheric CO₂ transport errors, and this section investigates the meteorological conditions associated with these persistent errors.

Figure 6 displays the CV for monthly-averaged surface concentrations of the synthetic tracer. The CV, a unitless quantity, does not just indicate where the uncertainties are largest. Rather, the CV indicates the magnitude of these uncertainties relative to the mean modeled tracer concentration. Arguably, this noise-to-signal ratio measures the influence of transport uncertainties more effectively than a simple standard deviation.

This coefficient shows a number of distinctive seasonal and spatial patterns. Like the uncertainties in monthly-

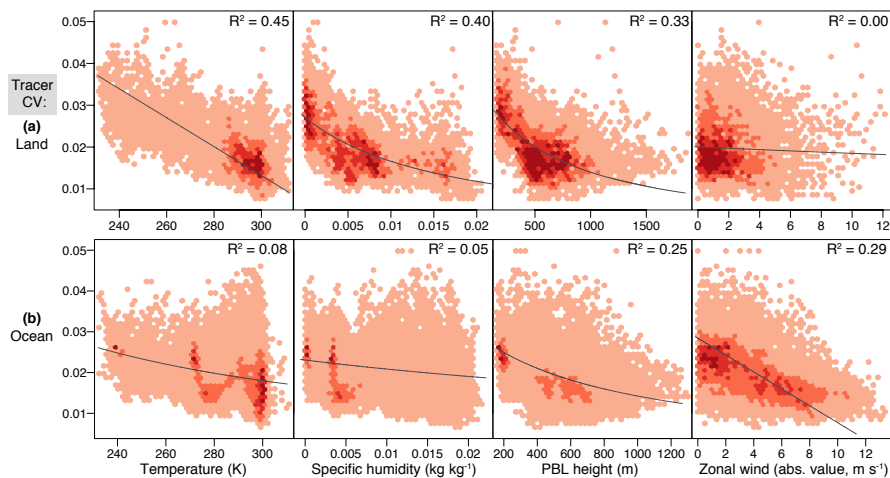


Figure 7. Each panel shows the relationship between the synthetic tracer CV (Fig. 6) and various monthly-averaged meteorological parameters estimated by CAM-LETKF. The top row (a) shows the results for terrestrial regions while the bottom row (b) displays the results for ocean/marine regions. Darker colors in each panel indicate a higher density of points. We test the correlation with 60 different parameters (Table S2 in the Supplement) and plot the two parameters that correlate most closely with the tracer CV over terrestrial and marine regions, respectively. In all cases, we fit both a standard major axis regression and nonlinear least squares ($\frac{1}{[\beta_1 \times \text{parameter} + \beta_2]}$) and plot the regression with the higher correlation coefficient.

averaged CO₂ (Fig. 2c, d), the CV in Fig. 6 is highest in terrestrial boreal and arctic regions of the Northern Hemisphere during winter. The CV is lowest over Europe, Australia, and the Amazon during all seasons.

The CV in Fig. 6 exhibits different spatial patterns over land and ocean regions, and these respective patterns correlate with different sets of meteorological variables. Over the oceans, for example, high CV values in Fig. 6a are clustered in zonal bands – along the Equator and along 40° S. In contrast, high CV values do not cluster into zonal bands to the same degree over terrestrial regions. Rather, CV values are often high when temperatures are low (e.g., over Canada or Russia in February).

We plot the synthetic tracer CV against numerous modeled meteorological parameters to further understand the possible drivers behind atmospheric transport uncertainties averaged over these monthly timescales. To this end, we examine correlations between the tracer CV and 60 different meteorological parameters, including the uncertainties in the meteorological variables. Figure 7 displays the two variables that correlate most strongly with the tracer CV over land regions and over ocean regions, respectively.

Over land regions, meteorological conditions that lead to high atmospheric stability and low energy are most closely associated with atmospheric transport errors. For example, a high tracer CV is associated with low temperatures ($R^2 = 0.45$) and low specific humidity ($R^2 = 0.40$). Similarly, a high tracer CV is correlated with low net solar flux ($R^2 = 0.35$), low planetary boundary layer height ($R^2 = 0.33$), and low vertical diffusion diffusivity ($R^2 = 0.31$). Note that many of these meteorological variables are closely

related to one another, so the individual correlations listed above are all interrelated.

In addition, several of the meteorological variables exhibit a nonlinear relationship with the tracer CV, and the potential for bias in modeled atmospheric transport increases more quickly in stable atmospheric conditions. For example, the CV increases more quickly when planetary boundary heights are low.

In contrast to land regions, the tracer CV over the oceans is most closely associated with low zonal wind speeds ($R^2 = 0.29$, Fig. 7). Over land regions, that correlation is zero. Uncertainties in atmospheric transport over the oceans are also associated with low PBL heights ($R^2 = 0.25$). These two meteorological variables explain different patterns in the tracer CV; PBL heights and zonal wind speeds over the ocean are not correlated with one another ($R^2 = 0$), so these two parameters may indicate different processes underlying the atmospheric transport errors.

These differences between land and ocean regions may reflect differences in synoptic-scale circulation. Over the oceans, high CV values are clustered in zonal bands, and these clusters often occur at the transition between distinctive synoptic flow patterns. Modeled atmospheric tracer transport is more uncertain in these transition regions – at the transition between southern westerlies and southern trade winds and at the transition between the North Atlantic trade winds and the westerlies. Zonal winds over the continents are often more variable than over the oceans (Fig. S17 in the Supplement), and atmospheric transport uncertainties do not cluster into the same, distinctive, zonal bands.

The results of this synthetic tracer experiment hold a number of potential applications to top-down CO₂ flux estimation. The danger of obtaining a biased CO₂ budget is likely higher in regions with consistent low energy and limited vertical mixing. A number of existing studies indicate that uncertainties in PBLH and vertical mixing are closely tied to uncertainties in estimated trace gas transport or in estimated trace gas fluxes (e.g., Stephens et al., 2007; Williams et al., 2011; Miller et al., 2012; Pino et al., 2012; Kretschmer et al., 2012). This study further suggests that sustained transport errors due to PBLH are more likely in regions or at times when PBL heights and mixing are consistently low. The meteorological model ensemble is not necessarily more uncertain in these regions (see Figs. S15–S16 in the Supplement). Rather, the extent to which meteorological uncertainties translate into tracer transport uncertainties appears to depend, at least in part, on the stability and net energy input associated with the boundary layer.

In summary, boundary layer energy and height explain some of the patterns in the estimated transport errors, but other patterns are associated with uncertainties in synoptic flow and are not related to a single meteorological parameter. In fact, over both terrestrial and oceanic regions, individual meteorological parameters only explain a maximum of 29–45 % of the variability in the tracer CV. This result stresses the utility of a meteorological model to calculate the variances and covariances in atmospheric transport errors rather than relying on a single, meteorological proxy.

Note that this study does not account for uncertainties in bottom-up, biogeochemical flux models due to uncertainties in driving meteorological variables. For example, process-based, biogeochemical models of CO₂ typically require estimates of meteorological variables like humidity, temperature, or precipitation to compute the surface fluxes. A number of existing studies have used atmospheric data and/or atmospheric models to explore the meteorological variables that drive CO₂ flux models. For example, Lin et al. (2011) explored how uncertainties in flux model drivers affected fluxes estimated for Canadian boreal forests. They found that uncertainties in downward shortwave radiation contributed to the largest uncertainties in the simulated fluxes. Similarly, numerous studies indicate that both air temperature and humidity are drivers of CO₂ fluxes (e.g., Law et al., 2002; Gourdji et al., 2012). These meteorological variables (e.g., downward shortwave radiation, temperature, and specific humidity) correlate with the persistent atmospheric transport uncertainties discussed earlier in this section. A future study could connect these uncertainties (in the biogeochemical model and in atmospheric transport) to gain an even broader picture of how meteorological uncertainties affect CO₂ flux modeling and ultimately top-down CO₂ flux estimates.

4 Conclusions

We use CAM-LETKF to explore the characteristics of correlated or covarying atmospheric CO₂ transport errors and the implications of those errors for CO₂ flux estimates. The first case study examines the relative magnitude of these errors at the monthly timescale. At this scale, error covariances play a critical role in the uncertainties in modeled atmospheric CO₂; we find that uncertainties increase by a factor of 5–20 at individual CO₂ observation sites when we include the error covariances in the analysis. These monthly-scale errors correspond to 13–150 % of the afternoon CO₂ boundary layer enhancement, depending on the site in question.

Existing top-down studies often overlook these covariances, and these results imply that atmospheric CO₂ measurements contain less information about the fluxes than is often assumed. As a result, existing inverse models may underestimate the uncertainties in estimated CO₂ fluxes and/or may be vulnerable to unforeseen biases in the estimated fluxes. Accounting for these correlated errors can be as simple as modifying one of the covariance matrix inputs in a Bayesian inverse model.

In a subsequent case study, we investigate the meteorological factors associated with month-long biases in atmospheric transport. The largest short-term CO₂ transport errors correlate strongly with the location of the largest surface fluxes, but month-long biases in atmospheric transport are not only localized to regions with large fluxes. Rather, these biases may be more likely to occur at observation sites that are far from large fluxes and in regions with high atmospheric stability and low net radiation. Over the oceans, biases in atmospheric transport are also associated with weak zonal winds. Existing top-down flux studies may be more likely to estimate inaccurate regional fluxes under those conditions. However, a large fraction of the estimated atmospheric transport errors cannot be described by a single meteorological parameter. This result indicates the utility of a meteorological modeling system, like CAM-LETKF, to estimate errors in atmospheric CO₂ transport. Through this framework, we can better understand the connections between uncertain atmospheric transport and uncertainties in CO₂ budgets estimated from atmospheric data.

The Supplement related to this article is available online at doi:10.5194/acp-15-2903-2015-supplement.

Acknowledgements. This work was conducted at the Department of Energy's (DOE) Lawrence Berkeley National Laboratory as part of a DOE Computational Science Graduate Fellowship. The research used resources of the National Energy Research Scientific Computing Center, which is supported by the DOE's Office of Science under contract no. DE-AC02-05CH11231. CarbonTracker

CT2011_oi results are provided by NOAA ESRL, Boulder, Colorado, USA, from the website at <http://carbontracker.noaa.gov>. We thank Steven Wofsy for his feedback on the manuscript and thank Ed Dlugokencky of NOAA.

Edited by: M. Heimann

References

- Baker, D. F., Law, R. M., Gurney, K. R., Rayner, P., Peylin, P., Denning, A. S., Bousquet, P., Bruhwiler, L., Chen, Y.-H., Ciais, P., Fung, I. Y., Heimann, M., John, J., Maki, T., Maksyutov, S., Masarie, K., Prather, M., Pak, B., Taguchi, S., and Zhu, Z.: TransCom 3 inversion intercomparison: Impact of transport model errors on the interannual variability of regional CO₂ fluxes, 1988–2003, *Global Biogeochem. Cy.*, 20, GB1002, doi:10.1029/2004GB002439, 2006.
- Chen, H., Zhou, T., Neale, R. B., Wu, X., and Zhang, G. J.: Performance of the New NCAR CAM3.5 in East Asian Summer Monsoon Simulations: Sensitivity to Modifications of the Convection Scheme, *J. Climate*, 23, 3657–3675, doi:10.1175/2010JCLI3022.1, 2010.
- Ciais, P., Rayner, P., Chevallier, F., Bousquet, P., Logan, M., Peylin, P., and Ramonet, M.: Atmospheric inversions for estimating CO₂ fluxes: methods and perspectives, in: *Greenhouse Gas Inventories*, edited by: Jonas, M., Nahorski, Z., Nilsson, S., and Whiter, T., 69–92, Springer Netherlands, doi:10.1007/978-94-007-1670-4_6, 2011.
- Collins, W. D., Bitz, C. M., Blackmon, M. L., Bonan, G. B., Bretherton, C. S., Carton, J. A., Chang, P., Doney, S. C., Hack, J. J., Henderson, T. B., Kiehl, J. T., Large, W. G., McKenna, D. S., Santer, B. D., and Smith, R. D.: The Community Climate System Model Version 3 (CCSM3), *J. Climate*, 19, 2122–2143, doi:10.1175/JCLI3761.1, 2006.
- Enting, I.: *Inverse Problems in Atmospheric Constituent Transport*, Cambridge Atmospheric and Space Science Series, Cambridge University Press, Cambridge, 2002.
- Gerbig, C., Lin, J. C., Wofsy, S. C., Daube, B. C., Andrews, A. E., Stephens, B. B., Bakwin, P. S., and Grainger, C. A.: Toward constraining regional-scale fluxes of CO₂ with atmospheric observations over a continent: 2. Analysis of COBRA data using a receptor-oriented framework, *J. Geophys. Res.-Atmos.*, 108, 4757, doi:10.1029/2003jd003770, 2003.
- Gerbig, C., Körner, S., and Lin, J. C.: Vertical mixing in atmospheric tracer transport models: error characterization and propagation, *Atmos. Chem. Phys.*, 8, 591–602, doi:10.5194/acp-8-591-2008, 2008.
- Gourdji, S. M., Mueller, K. L., Yadav, V., Huntzinger, D. N., Andrews, A. E., Trudeau, M., Petron, G., Nehr Korn, T., Eluszkiewicz, J., Henderson, J., Wen, D., Lin, J., Fischer, M., Sweeney, C., and Michalak, A. M.: North American CO₂ exchange: inter-comparison of modeled estimates with results from a fine-scale atmospheric inversion, *Biogeosciences*, 9, 457–475, doi:10.5194/bg-9-457-2012, 2012.
- Gurney, K. R., Law, R. M., Denning, A. S., Rayner, P. J., Baker, D., Bousquet, P., Bruhwiler, L., Chen, Y. H., Ciais, P., Fan, S., Fung, I. Y., Gloor, M., Heimann, M., Higuchi, K., John, J., Maki, T., Maksyutov, S., Masarie, K., Peylin, P., Prather, M., Pak, B. C., Randerson, J., Sarmiento, J., Taguchi, S., Takahashi, T., and Yuen, C. W.: Towards robust regional estimates of CO₂ sources and sinks using atmospheric transport models, *Nature*, 415, 626–630, doi:10.1038/415626a, 2002.
- Hunt, B. R., Kalnay, E., Kostelich, E. J., Ott, E., Patil, D. J., Sauer, T., Szunyogh, I., Yorke, J. A., and Zimin, A. V.: Four-dimensional ensemble Kalman filtering, *Tellus A*, 56, 273–277, doi:10.1111/j.1600-0870.2004.00066.x, 2004.
- Hunt, B. R., Kostelich, E. J., and Szunyogh, I.: Efficient data assimilation for spatiotemporal chaos: A local ensemble transform Kalman filter, *Physica D*, 230, 112–126, doi:10.1016/j.physd.2006.11.008, 2007.
- Huntzinger, D., Post, W., Wei, Y., Michalak, A., West, T., Jacobson, A., Baker, I., Chen, J., Davis, K., Hayes, D., Hoffman, F., Jain, A., Liu, S., McGuire, A., Neilson, R., Potter, C., Poulter, B., Price, D., Raczka, B., Tian, H., Thornton, P., Tomelleri, E., Viovy, N., Xiao, J., Yuan, W., Zeng, N., Zhao, M., and Cook, R.: North American Carbon Program (NACP) regional interim synthesis: Terrestrial biospheric model intercomparison, *Ecol. Model.*, 232, 144–157, doi:10.1016/j.ecolmodel.2012.02.004, 2012.
- Kanamitsu, M., Ebisuzaki, W., Woollen, J., Yang, S.-K., Hnilo, J. J., Fiorino, M., and Potter, G. L.: NCEP–DOE AMIP-II Reanalysis (R-2), *B. Am. Meteorol. Soc.*, 83, 1631–1643, doi:10.1175/BAMS-83-11-1631, 2002.
- Kretschmer, R., Gerbig, C., Karstens, U., and Koch, F.-T.: Error characterization of CO₂ vertical mixing in the atmospheric transport model WRF-VPRM, *Atmos. Chem. Phys.*, 12, 2441–2458, doi:10.5194/acp-12-2441-2012, 2012.
- Kretschmer, R., Gerbig, C., Karstens, U., Biavati, G., Vermeulen, A., Vogel, F., Hammer, S., and Totsche, K. U.: Impact of optimized mixing heights on simulated regional atmospheric transport of CO₂, *Atmos. Chem. Phys.*, 14, 7149–7172, doi:10.5194/acp-14-7149-2014, 2014.
- Lauvaux, T., Pannekoucke, O., Sarrat, C., Chevallier, F., Ciais, P., Noilhan, J., and Rayner, P. J.: Structure of the transport uncertainty in mesoscale inversions of CO₂ sources and sinks using ensemble model simulations, *Biogeosciences*, 6, 1089–1102, doi:10.5194/bg-6-1089-2009, 2009.
- Law, B., Falge, E., Gu, L., Baldocchi, D., Bakwin, P., Berbigier, P., Davis, K., Dolman, A., Falk, M., Fuentes, J., Goldstein, A., Granier, A., Grelle, A., Hollinger, D., Janssens, I., Jarvis, P., Jensen, N., Katul, G., Mahli, Y., Matteucci, G., Meyers, T., Monson, R., Munger, W., Oechel, W., Olson, R., Pilegaard, K., U, K. P., Thorgeirsson, H., Valentini, R., Verma, S., Vesala, T., Wilson, K., and Wofsy, S.: Environmental controls over carbon dioxide and water vapor exchange of terrestrial vegetation, *Agr. Forest Meteorol.*, 113, 97–120, doi:10.1016/S0168-1923(02)00104-1, 2002.
- Li, H., Kalnay, E., and Miyoshi, T.: Simultaneous estimation of covariance inflation and observation errors within an ensemble Kalman filter, *Q. J. Roy. Meteor. Soc.*, 135, 523–533, doi:10.1002/qj.371, 2009.
- Lin, J. C. and Gerbig, C.: Accounting for the effect of transport errors on tracer inversions, *Geophys. Res. Lett.*, 32, L01802, doi:10.1029/2004GL021127, 2005.
- Lin, J. C., Pejam, M. R., Chan, E., Wofsy, S. C., Gottlieb, E. W., Margolis, H. A., and McCaughey, J. H.: Attributing uncertainties in simulated biospheric carbon fluxes to dif-

- ferent error sources, *Global Biogeochem. Cy.*, 25, GB2018, doi:10.1029/2010GB003884, 2011.
- Liu, J., Fung, I., Kalnay, E., and Kang, J.-S.: CO₂ transport uncertainties from the uncertainties in meteorological fields, *Geophys. Res. Lett.*, 38, L12808, doi:10.1029/2011GL047213, 2011.
- Liu, J., Fung, I., Kalnay, E., Kang, J.-S., Olsen, E. T., and Chen, L.: Simultaneous assimilation of AIRS XCO₂ and meteorological observations in a carbon climate model with an ensemble Kalman filter, *J. Geophys. Res.-Atmos.*, 117, D05309, doi:10.1029/2011JD016642, 2012.
- Masarie, K. A., Pétron, G., Andrews, A., Bruhwiler, L., Conway, T. J., Jacobson, A. R., Miller, J. B., Tans, P. P., Worthy, D. E., and Peters, W.: Impact of CO₂ measurement bias on CarbonTracker surface flux estimates, *J. Geophys. Res.-Atmos.*, 116, D17305, doi:10.1029/2011JD016270, 2011.
- Michalak, A., Bruhwiler, L., and Tans, P.: A geostatistical approach to surface flux estimation of atmospheric trace gases, *J. Geophys. Res.-Atmos.*, 109, D14109, doi:10.1029/2003JD004422, 2004.
- Michalak, A. M., Hirsch, A., Bruhwiler, L., Gurney, K. R., Peters, W., and Tans, P. P.: Maximum likelihood estimation of covariance parameters for Bayesian atmospheric trace gas surface flux inversions, *J. Geophys. Res.-Atmos.*, 110, D24107, doi:10.1029/2005JD005970, 2005.
- Miller, S. M., Kort, E. A., Hirsch, A. I., Dlugokencky, E. J., Andrews, A. E., Xu, X., Tian, H., Nehrkorn, T., Eluszkiewicz, J., Michalak, A. M., and Wofsy, S. C.: Regional sources of nitrous oxide over the United States: Seasonal variation and spatial distribution, *J. Geophys. Res.-Atmos.*, 117, D06310, doi:10.1029/2011JD016951, 2012.
- Miyoshi, T.: The Gaussian approach to adaptive covariance inflation and its implementation with the Local Ensemble Transform Kalman Filter, *Mon. Weather Rev.*, 139, 1519–1535, doi:10.1175/2010MWR3570.1, 2011.
- Oleson, K. W., Niu, G.-Y., Yang, Z.-L., Lawrence, D. M., Thornton, P. E., Lawrence, P. J., Stöckli, R., Dickinson, R. E., Bonan, G. B., Levis, S., Dai, A., and Qian, T.: Improvements to the Community Land Model and their impact on the hydrological cycle, *J. Geophys. Res.-Biogeo.*, 113, G01021, doi:10.1029/2007JG000563, 2008.
- Parazoo, N. C., Denning, A. S., Kawa, S. R., Pawson, S., and Lokupitiya, R.: CO₂ flux estimation errors associated with moist atmospheric processes, *Atmos. Chem. Phys.*, 12, 6405–6416, doi:10.5194/acp-12-6405-2012, 2012.
- Peters, W., Jacobson, A. R., Sweeney, C., Andrews, A. E., Conway, T. J., Masarie, K., Miller, J. B., Bruhwiler, L. M. P., Petron, G., Hirsch, A. I., Worthy, D. E. J., Werf, G. R. v. d., Randerson, J. T., Wennberg, P. O., Krol, M. C., and Tans, P. P.: An atmospheric perspective on North American carbon dioxide exchange: CarbonTracker, *P. Natl. Acad. Sci. USA*, with updates documented at <http://carbontracker.noaa.gov>, 104, 18925–18930, doi:10.1073/pnas.0708986104, 2007.
- Pino, D., Vilà-Guerau de Arellano, J., Peters, W., Schröter, J., van Heerwaarden, C. C., and Krol, M. C.: A conceptual framework to quantify the influence of convective boundary layer development on carbon dioxide mixing ratios, *Atmos. Chem. Phys.*, 12, 2969–2985, doi:10.5194/acp-12-2969-2012, 2012.
- Raczka, B. M., Davis, K. J., Huntzinger, D., Neilson, R. P., Poulter, B., Richardson, A. D., Xiao, J., Baker, I., Ciais, P., Keenan, T. F., Law, B., Post, W. M., Ricciuto, D., Schaefer, K., Tian, H., Tomelleri, E., Verbbeeck, H., and Viovy, N.: Evaluation of continental carbon cycle simulations with North American flux tower observations, *Ecol. Monogr.*, 83, 531–556, doi:10.1890/12-0893.1, 2013.
- Stephens, B. B., Gurney, K. R., Tans, P. P., Sweeney, C., Peters, W., Bruhwiler, L., Ciais, P., Ramonet, M., Bousquet, P., Nakazawa, T., Aoki, S., Machida, T., Inoue, G., Vinnichenko, N., Lloyd, J., Jordan, A., Heimann, M., Shibistova, O., Langenfelds, R. L., Steele, L. P., Francey, R. J., and Denning, A. S.: Weak Northern and Strong Tropical Land Carbon Uptake from Vertical Profiles of Atmospheric CO₂, *Science*, 316, 1732–1735, doi:10.1126/science.1137004, 2007.
- Tarantola, A.: *Inverse Problem Theory and Methods for Model Parameter Estimation*, Society for Industrial and Applied Mathematics, Philadelphia, 2005.
- Williams, I. N., Riley, W. J., Torn, M. S., Berry, J. A., and Biraud, S. C.: Using boundary layer equilibrium to reduce uncertainties in transport models and CO₂ flux inversions, *Atmos. Chem. Phys.*, 11, 9631–9641, doi:10.5194/acp-11-9631-2011, 2011.