



## Summertime NO<sub>x</sub> measurements during the CHABLIS campaign: can source and sink estimates unravel observed diurnal cycles?

S. J.-B. Bauguitte<sup>1,\*</sup>, W. J. Bloss<sup>2,\*\*</sup>, M. J. Evans<sup>3,\*\*\*</sup>, R. A. Salmon<sup>1</sup>, P. S. Anderson<sup>1</sup>, A. E. Jones<sup>1</sup>, J. D. Lee<sup>2,\*\*\*</sup>, A. Saiz-Lopez<sup>4,\*\*\*\*</sup>, H. K. Roscoe<sup>1</sup>, E. W. Wolff<sup>1</sup>, and J. M. C. Plane<sup>4,\*\*\*\*\*</sup>

<sup>1</sup>British Antarctic Survey, Natural Environment Research Council, High Cross, Madingley Road, Cambridge CB3 0ET, UK

<sup>2</sup>School of Chemistry, University of Leeds, Leeds, LS2 9JT, UK

<sup>3</sup>School of Earth and the Environment, University of Leeds, LS2 9JT, UK

<sup>4</sup>School of Environmental Sciences, UEA, Norwich NR4 7TJ, UK

\* now at: Facility for Airborne Atmospheric Measurements, Natural Environment Research Council, Cranfield, Bedfordshire, MK43 0AL, UK

\*\* now at: School of Geography, Earth and Environmental Sciences, University of Birmingham, Edgbaston, B15 2TT, UK

\*\*\* now at: University of York/National Centre for Atmospheric Science, Department of Chemistry, University of York, York, YO10 5DD, UK

\*\*\*\* now at: Laboratorio de Ciencias de la Atmósfera y el Clima, Consejo Superior de Investigaciones Científicas (CSIC), c/Río Cabriel S/N, 45007 Toledo, Spain

\*\*\*\*\* now at: School of Chemistry, University of Leeds, Leeds, LS2 9JT, UK

Correspondence to: S. J.-B. Bauguitte (sbau@nerc.ac.uk)

Received: 17 July 2009 – Published in Atmos. Chem. Phys. Discuss.: 29 September 2009

Revised: 21 November 2011 – Accepted: 11 January 2012 – Published: 19 January 2012

**Abstract.** NO<sub>x</sub> measurements were conducted at the Halley Research Station, coastal Antarctica, during the austral summer period 1 January–10 February 2005. A clear NO<sub>x</sub> diurnal cycle was observed with minimum concentrations close to instrumental detection limit (5 pptv) measured between 04:00–05:00 GMT. NO<sub>x</sub> concentrations peaked (24 pptv) between 19:00–20:00 GMT, approximately 5 h after local solar noon. An optimised box model of NO<sub>x</sub> concentrations based on production from in-snow nitrate photolysis and chemical loss derives a mean noon emission rate of  $3.48 \times 10^8$  molec cm<sup>-2</sup> s<sup>-1</sup>, assuming a 100 m boundary layer mixing height, and a relatively short NO<sub>x</sub> lifetime of ~6.4 h. This emission rate compares to directly measured values ranging from 2.1 to  $12.6 \times 10^8$  molec cm<sup>-2</sup> s<sup>-1</sup> made on 3 days at the end of the study period. Calculations of the maximum rate of NO<sub>2</sub> loss via a variety of conventional HO<sub>x</sub> and halogen oxidation processes show that the lifetime of NO<sub>x</sub> is predominantly controlled by halogen processing, namely BrNO<sub>3</sub> and INO<sub>3</sub> gas-phase formation and their subsequent heterogeneous uptake. Furthermore the presence of halogen oxides is shown to significantly perturb NO<sub>x</sub> con-

centrations by decreasing the NO/NO<sub>2</sub> ratio. We conclude that in coastal Antarctica, the potential ozone production efficiency of NO<sub>x</sub> emitted from the snowpack is mitigated by the more rapid NO<sub>x</sub> loss due to halogen nitrate hydrolysis.

### 1 Introduction

For the past two decades, polar boundary layer composition and photochemistry has been the focus of major field measurement campaigns undertaken in Arctic and Antarctic research stations.

At Alert (Nunavut, Canada), the pioneering Polar Sunrise Experiments (e.g. Barrie et al., 1994) initially prompted our attention to boundary layer ozone depletion and Arctic haze pollution events. This triggered further research, such as the Tropospheric Ozone Production around the Spring Equinox (TOPSE) airborne missions flown by the NCAR C-130 research aircraft into the high Canadian Arctic during Spring 2000 (Atlas et al., 2003). Beine and co-workers provided valuable long-term monitoring trends of a variety of

pollutants at the NILU-operated Mount Zeppelin station in Svalbard, Eastern Greenland Sea (e.g. Beine et al., 1997). Similar long-term and summer intensive measurements campaign were also conducted at the Summit station on the Greenland icecap (e.g. Dibb et al., 1998, 2002; Honrath et al., 2002).

In Antarctica, Jones et al. (1999) provided the first evidence of snowpack photochemical reactivity when measuring snow-emitted NO<sub>x</sub> at the Neumayer coastal station, whereas Davis et al. (2001) provided further observations illustrating the exceptional reactivity of the South Pole boundary layer over the Eastern Antarctic Plateau.

Most of the above-mentioned studies carried out near and over the sea-ice zone have commented on the need to include halogen chemistry in order to reconcile observations and model outputs. The presence of bromine, iodine and chlorine species and their impact on tropospheric ozone is widely acknowledged (von Glasow et al., 2004; Yang et al., 2005; Simpson et al., 2007; Read et al., 2008). Our confidence in the ubiquitous impact of halogen chemistry, despite the scarcity of halogens ground-based measurements, has been greatly improved by satellite observations of BrO and IO (Richter et al., 2002; Saiz-Lopez et al., 2007b; Schoenhardt et al., 2008), despite the recent results from the NASA ARCTAS and NOAA ARCPAC airborne campaigns which have highlighted some issues with BrO retrievals from satellites (Jacob et al., 2010; Salawitch et al., 2010).

It is now accepted that the photolysis of organic and inorganic precursors in the high (and to a lesser extent mid) latitude snowpack contributes to the release and exchange of gas-phase molecules that would hitherto not be expected in the remote polar boundary layer (Dominé and Shepson, 2002; Grannas et al., 2007). This has two main implications: (a) the polar boundary layer oxidative capacity is perturbed through ozone and HO<sub>x</sub> photochemistry (Zhou et al., 2001; Chen et al., 2004; Helmig et al., 2008; Bloss et al., 2010), and (b) these post-depositional processes affect the burial rate and chemical signature of deposited ions and trapped trace gases, hence requiring a further degree of constraint for the use of ice core proxies in paleo-atmospheric chemistry modelling studies (Wolff, 1995; Wolff et al., 2008). More recent studies of the stable isotope signature of aerosol (and snow) nitrate have illustrated the complexity in identifying NO<sub>x</sub> sources and sinks (Morin et al., 2008 and references therein). They also confirmed that NO<sub>x</sub> emissions from snow play a large role on the budget of NO<sub>x</sub> and nitrate in polar regions at the regional scale, and that NO<sub>x</sub> oxidation by halogen oxides is happening at a very large scale in the Antarctic and in the Arctic. In addition, Morin et al. (2009) recently showed that such NO<sub>x</sub> emissions not only occur from snow on ice sheets but also from snow on sea ice, as inferred from the  $\delta^{15}\text{N}$  of aerosol nitrate over the frozen Weddell Sea.

In this study, we describe a set of NO<sub>x</sub> measurements conducted at the Clean Air Sector Laboratory (CASLab) at the Halley Research Station, coastal Antarctica, during the

CHemistry of the Antarctic Boundary Layer and Interface with Snow (CHABLIS) campaign (Jones et al., 2008). We focus on the austral summer intensive campaign (1 January–10 February 2005) when comprehensive ancillary HO<sub>x</sub> and actinic flux measurements were available. The instrumentation and its performance are first described. We then interpret the mean NO, NO<sub>2</sub> and NO<sub>x</sub> diurnal cycles by analysing the contribution of sources and sinks with a simple steady state model. This approach contrasts with an earlier study (Anderson and Bauguitte, 2007) using a subset of the data presented here. In that study, a simple boundary layer tracer diffusion model was successfully used to reproduce the observed NO<sub>x</sub> diurnal cycle, the timing being critically dependent on  $\tau$ , a tracer decay rate. We, further, present results from near snow surface flux measurements of NO<sub>x</sub>, and put these in the context of existing measured and model derived fluxes in the Arctic and Antarctic. Our derived NO<sub>x</sub> lifetime is compared to sink estimates employing the latest kinetic data of known oxidation processes. We analyse the NO<sub>x</sub> partitioning and assess the factors controlling the NO/NO<sub>2</sub> ratio. We finally discuss the implications of our findings for the photochemistry of the polar boundary layer, and their broader relevance to the atmospheric oxidative capacity.

## 2 Methods

### 2.1 NO<sub>x</sub> instrumentation

NO<sub>x</sub> measurements were conducted using a 2-channel chemiluminescence (CL) analyser, which evolved from the single channel system described in Cotter et al. (2003). A second CL channel was implemented to allow higher time resolution and simultaneous detection of NO and NO<sub>x</sub>.

The design of the NO<sub>2</sub> photolytic converter (PLC) employed in this study was inspired by the narrow-band (ca. 365 nm) photolysis system described in Ryerson et al. (2000), and employs an Oriel PhotoMax lamp housing. The ellipsoid-focussed UV source used during CHABLIS was a more powerful 200 W Hg super high-pressure arc lamp (USHIO 200DP) with water-cooled electrodes, compared with the 75 W Xe-Hg lamp used in previous work (Cotter et al., 2003). This yielded a threefold increase in the NO<sub>2</sub> conversion efficiency. Spectral filtering of the UV output was achieved by means of a Pyrex window (Oriel part number 60127) as a 320 nm UV cut-out, located between the focussed arc and lamp housing. A KBr infrared absorbing filter (KG3, Oriel part number 51960) was also inserted to minimize heat transfer to the photolysis cell.

Given the spectral filtering employed in our PLC, we believe that the main potential photolytic interferent is from HONO (Beine et al., 2002; Ryerson et al., 2000). Using the Oriel filters transmittance data, the USHIO lamp intensity, and NO<sub>2</sub> and HONO absorption cross sections from JPL evaluation 14, we estimate for our system a HONO

interference in the NO<sub>2</sub> PLC of  $\sim 22\%$ . While an attempt to measure HONO was made during CHABLIS (Clemittshaw, 2006), subsequent assessments showed that the derived values were not consistent with observed NO<sub>x</sub> or HO<sub>x</sub> (Bloss et al., 2007, 2010). Indeed, data could only be reconciled when HONO was less than 0.22 pptv, although we note that this number relies on (i) all input data to the model being correct, and (ii) the model being complete in its representation of all the major chemical and physical processes that ultimately control the concentration of HONO. That said, even with a potential interferent of 22%, at such low mixing ratios, it would seem that HONO is not likely to be a major interferent to the NO<sub>2</sub> measurements reported here. Conclusions drawn in this paper are therefore based on the assumption that there have been no significant contributions to the measured NO<sub>2</sub> signal from ambient HONO.

Cold ambient air was fanned from outside the CASLab and directed onto the NO<sub>2</sub> photolysis quartz cell to maintain its wall temperature below  $\sim 12^\circ\text{C}$ . Without this forced air cooling, the cell heated up to temperatures in excess of  $50^\circ\text{C}$ . Although thermal decomposition of PAN and/or HNO<sub>4</sub> are potential sources of NO<sub>2</sub>, at  $12^\circ\text{C}$  and below, the lifetimes of both are long compared with the cell plug-flow residence time of  $< 2$  s, and thus represent no significant source of interferent to our data.

The NO<sub>x</sub> measurement duty cycle was optimised as follows. The CL detectors' baseline count rates were determined by pre-chamber zeroing every 10 to 15 min for 60 s. One minute averaged zero count rates were then linearly interpolated, to produce a baseline ready for subtraction from the raw signal count rate. All CL data acquired in 1 Hz photon-counting mode was then reduced to one minute averages after applying baseline, calibration and artefact corrections.

The NO sensitivity of the CL detectors was determined twice daily for 10 min, with a repeat time of 13 h, by standard addition to the ambient air matrix of a 1 ppmv NO/N<sub>2</sub> mixture (UK National Physical Laboratory traceable BOC certified), which is further diluted by mass flow controllers to yield 2 ppbv NO. Using the same calibration schedule, the NO<sub>2</sub> channel photolytic conversion efficiency (CE) was determined by addition of a known mole fraction of NO<sub>2</sub>. This was achieved by gas-phase titration of the NO/N<sub>2</sub> mixture to NO<sub>2</sub> by O<sub>3</sub> generated from a pen-ray Hg lamp, and monitoring the un-titrated NO mole fraction (typically 5%).

Detector artefact determinations were also performed twice daily with a 13 h repeat time staggered to that of the NO sensitivity calibrations, thereby randomising in time of day the calibration and artefact determination sequences. Instrumental artefacts were determined by overflowing the instrument inlet with scrubbed ambient air supplied by an Eco-Physics Pure Air Generator (model PAG003). Beside a  $-15^\circ\text{C}$  dew point freeze-drying and ozonation/activated charcoal NO<sub>x</sub> filtering stages, this generator type also includes a  $350^\circ\text{C}$  heated Palladium catalyst scrubbing stage

**Table 1.** Summary of CL detector performance parameters, and nominal precision and accuracy of one minute NO<sub>x</sub> mixing ratios below 20 pptv based on known systematic errors. The NO<sub>2</sub> systematic error includes the contribution due to the systematic error in NO. The reported NO<sub>2</sub> artefact is the combined CL (NO<sub>x</sub>) analyser and PLC artefact.

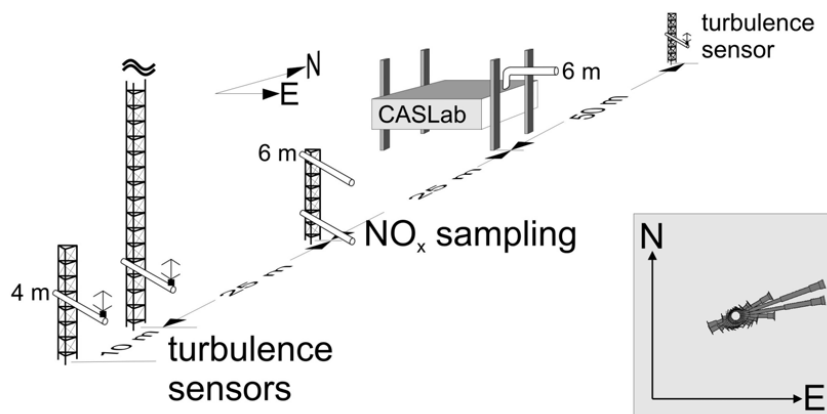
	NO	NO <sub>2</sub>
NO sensitivity, Hz pptv <sup>-1</sup>	4.2	2.5
Background count rate, Hz	300–400	300–400
Reaction chamber vacuum, Torr	10	10
Detector flow-rate, std l min <sup>-1</sup>	1	1
Artefact, pptv	-2	-6
NO <sub>2</sub> photolytic CE, %	N/a	55–60
Limit of detection, based on precision/random noise, 2σ standard error, pptv	±2.0	±6.0
Accuracy based on systematic errors (<20 pptv NO <sub>x</sub> ), pptv	±1.3	±3.3

for the removal of hydrocarbons. We found this method more appropriate than using “NO<sub>x</sub>-free” synthetic compressed air; when comparing our pure air generator output to that of a cylinder of synthetic air (Air Products ZeroPlus grade Air), we found that the measured NO<sub>2</sub> artefact quadrupled (NO artefact doubled) in synthetic air. For all summer data reported here, we subtracted a 2 pptv artefact for NO, and 6 pptv artefact for NO<sub>2</sub>.

The instrumental limit of detection was estimated from the two sigma standard error determined when averaging the 1 Hz NO and NO<sub>2</sub> data to one minute means. This standard error therefore corresponds to the measurement precision, and arises largely from Poisson distributed photon-counting statistics, and will decrease with further data averaging.

Overall systematic errors were estimated as the root sum of squares (rss) of all known systematic uncertainties affecting the accuracy of the measurement, namely:  $\pm 3\%$  NO calibration gas concentration (mass flow-rate controlled dilution of 1 ppmv NO/N<sub>2</sub> standard gas); error in linear interpolation of the 1 Hz baseline count rate (0.8 and 2.3 pptv for NO and NO<sub>2</sub>, respectively);  $\pm 0.4\%$  NO<sub>2</sub> CE determination error; instrumental artefact determination error ( $\pm 1$  pptv for NO and  $\pm 3$  pptv for NO<sub>2</sub>). Table 1 provides a summary of our instrumentation performance parameters and corresponding random and overall systematic errors for NO and NO<sub>2</sub> measurements.

The final NO<sub>x</sub> data was filtered for infrequent pollution from the exhaust of the Halley Research Station generators, using the combination of a two-pass wind sector filter



**Fig. 1.** Schematic of location of inlets and turbulence sensors used for NO<sub>x</sub> flux measurements during CHABLIS. The lower NO<sub>x</sub> sampling inlet, situated 25 m South of the CASLab, is 1.5 m high. The inset shows the mean wind rose at Halley.

method, station observers' logs, and NO<sub>x</sub> data itself. The first pass filter was based on the wind sector exclusion zone (293 to 335°) for all wind speeds, to identify potential "discrete plumes" from the station. The second pass filter was based on the North sector exclusion zone (90 to 270°) for wind speeds <2 m s<sup>-1</sup>, to identify "dispersed plume". NO<sub>x</sub> data was then scanned for possible signs of contamination.

## 2.2 Flux measurements from snow pack

During three days at the end of the 2004/5 austral summer (1–4 February 2005), we measured coincident near snow surface NO<sub>x</sub> gradients,  $\frac{\partial \text{NO}_x}{\partial z}$  (units of pptv m<sup>-1</sup>) and turbulent diffusivity  $K$  (units of m<sup>2</sup> s<sup>-1</sup>), which give estimates of vertical NO<sub>x</sub> flux,  $F_{\text{NO}_x}$ , according to:

$$F_{\text{NO}_x} = K \frac{\partial \text{NO}_x}{\partial z} \quad (1)$$

$F_{\text{NO}_x}$  is therefore in units of pptv m s<sup>-1</sup>, a concentration velocity. The NO<sub>x</sub> analyser sampled sequentially from two inlets mounted on a mast ~25 m South of the CASLab (see Fig. 1). The upper and lower NO<sub>x</sub> inlets were 6.0 and 1.5 m above the snow surface. Ambient air was drawn back to the CASLab via two ~25 m blacked-out 1/4" od PFA Teflon tubes. The residence time of the ambient air matrix in the PFA transfer lines was measured to be ~14 s, by spiking high NO/N<sub>2</sub> concentrations at the inlet tips. The flow rate through the transfer lines was maintained at ~5 l min<sup>-1</sup> with a throttled air pump (GAST model DOA-P725-BN).

For NO<sub>x</sub> flux measurements, the instrument duty cycle was modified as follows: 10 min sampling for a particular inlet height, consisting of 9 min measure, and 1 min zeroing, then inlet height swap. The synchronisation of the analyser duty cycle and inlet height switching valves was achieved within 1 to 2 s.

A 30 m turbulence profiling mast was a further 25 m South of the NO<sub>x</sub> sampling mast (Fig. 1) with turbulence

and mean micro-meteorological sensors mounted in a vertical array. The instrument set included a sonic anemometer/thermometer at 4 m height above snow. See Anderson and Neff (2008) for a detailed description of the 30 m mast.

Similar sonic anemometry was located 10 m South and 100 m North of the 30 m mast, in order to estimate spatial variability of turbulence measurements at the 4 m level and hence give confidence limits for the diffusivity estimates at the NO<sub>x</sub> inlets.

## 2.3 Photolysis rates

The 2π spectro radiometer used for measuring actinic fluxes is described in Jones et al. (2008). Here we focus on the data processing employed to derive the photolysis rates of atmospheric NO<sub>2</sub> and in-snow nitrate ions, needed for our model study.

### 2.3.1 $J\text{NO}_2^{\text{total}}$

In order to derive the 4π integrated  $J\text{NO}_2^{\text{total}}$ , we used the 2π downwelling  $J\text{NO}_2^{\downarrow}$  (measured routinely), and the 2π upwelling  $J\text{NO}_2^{\uparrow}$  (measured very occasionally). The latter was used to adjust  $J\text{NO}_2^{\downarrow}$  according to the actinic flux ratio (see Jones et al., 2008). For cloudy sky conditions (okta > 6.5; cloud cover being estimated as how many eighths of the sky, known by meteorologists as oktas, are obscured by cloud; ranging from completely clear, 0 oktas, through to completely overcast, 8 oktas), we used the actinic flux ratio  $J\text{NO}_2^{\downarrow}/J\text{NO}_2^{\uparrow}$  equal to 0.98. For less diffuse light conditions (okta < 6.5), the ratio was calculated using the solar zenith angle (SZA) parameterisation described in Jones et al. (2008). The correction of the ratio calculated as a function of SZA, to a constant 0.98 actinic flux ratio, was found to be between ±3 % and ±14 %. The lowest correction figures occurred at low zenith angles and hence high actinic fluxes, while the largest corrections were obtained at high zenith

angles. The mean solar noon  $J\text{NO}_2$  value for the CHABLIS summer campaign was  $\sim 1.93 \times 10^{-2} \text{ s}^{-1}$ .

### 2.3.2 In-snow $J(\text{Nitrate})^\downarrow$

Estimating and measuring the photolysis rate of nitrate ions in snow is a difficult task (Wolff et al., 2002; Qiu et al., 2002; Fisher et al., 2005). In Wolff et al. (2002) and Jones et al. (2011), NO<sub>x</sub> emission rates from snow were estimated using in-snow nitrate ion actinic flux as a function of depth, using a snow pack radiative transfer model (Grenfell, 1991), with the spectral irradiance input,  $E^\downarrow(\lambda)$ , calculated using the NCAR/ACD radiative transfer model TUV. In their trace gas diffusion modelling study, Anderson and Bauguitte (2007) used global shortwave irradiance measurements,  $G$ , for approximating the column integrated in-snow actinic flux for nitrate, defined as  $\int J(\text{Nitrate})^\downarrow dz$ . They argue the case for the approximate linearity of the transfer function  $G \rightarrow \int J(\text{Nitrate})^\downarrow dz$ .

The above methodologies suffer from a variety of short-falls. In the two former studies, inherent uncertainties are introduced by employing the TUV radiative transfer model output  $E^\downarrow(\lambda)$  for the flux computation. In the latter study,  $G$  is poorly spectrally resolved for the nitrate ion, and the linear relationship of the proxy is dependent upon zenith angle.

In this study, we approximate in-snow nitrate ion actinic fluxes using  $2\pi$  downwelling, spectrally resolved, atmospheric actinic flux measurements  $F(\lambda)^\downarrow$ , which we believe provide a more robust proxy. The methodology has nonetheless its own sources of uncertainties which we discuss here.

$J(\text{Nitrate})^\downarrow$  photolysis rates were computed using nitrate ion cross sections, in liquid phase at room temperature, taken from Burley and Johnston (1992), and quantum efficiencies in ice from the formula of Chu and Anastasio (2003), calculated at 5 K intervals from 258 to 278 K.

A further correction of the in-snow photolysis rate is needed, to account for the fact that we only measure downwelling flux  $F(\lambda)^\downarrow$ , whereas the in-snow flux is the sum of downwelling and upwelling terms. By analogy with the fluxes inside the top of dense cloud (Madronich, 1987), upwelling and downwelling fluxes are everywhere equal in snow, and in the case of diffuse light when one expects equal downwelling fluxes just below and just above the snow surface, the total in-snow flux is  $2 \times F^\downarrow$ .

Because the relationship between flux and irradiance for diffuse illumination is given by  $F^\downarrow = 2 \times E^\downarrow$ , the total in-snow flux is  $4 \times E^\downarrow$ . In the case of direct light (clear sky and no Rayleigh scattering), Lee-Taylor and Madronich (2002) show that the same relationship holds a few cm down inside the snow pack, irrespective of SZA. Above the snow,  $E^\downarrow = F^\downarrow \times \cos(\text{SZA})$ , and between 1 January and 10 February 2005, the solar noon SZA varied from 52.6 to 61.4°. The resulting proportionality factor in clear sky conditions and low solar noon SZA will therefore be in the range 0.48 to 0.61, so that the total in-snow flux is 1.91 to  $2.44 \times F^\downarrow$ .

However we argue that the  $F^\downarrow = 2 \times E^\downarrow$  relationship still holds to some extent in more direct light conditions, due to Rayleigh scattering of the atmosphere at a sea-level site, especially in the near-UV part of the spectrum where nitrate ions photolyse (280–320 nm). During the CHABLIS summer intensive campaign, the cloud cover was greater than 6.5 okta for  $\sim 60\%$  of the time. Hence we choose total in-snow flux to be  $2 \times F^\downarrow$ , where  $F^\downarrow$  is our  $j\text{Nitrate}^\downarrow$  calculated from our measured  $F(\lambda)^\downarrow$ , and accept a potential for error of perhaps 20% near noon on a few days with fully clear skies.

For the CHABLIS austral summer campaign, we computed a mean solar noon  $j\text{Nitrate}^\downarrow$  photolysis rate of  $\sim 1.19 \times 10^{-7} \text{ s}^{-1}$ , so that our in-snow flux would be  $\sim 2.38 \times 10^{-7} \text{ s}^{-1}$ . This is approximately a factor 5 smaller than the  $\sim 12.5 \times 10^{-7} \text{ s}^{-1}$  values measured by actinometry tubes deployed at Summit Greenland on surface snow on 8 June by Qiu et al. (2002), although the authors do not report absolute measurements uncertainty.

## 2.4 Ancillary data sets

For model calculations, we employed various data sets acquired for the period 1 January to 10 February 2005 at the Halley Research Station. For surface ozone and meteorology parameters, we used the data sets highlighted in Jones et al. (2008). OH and HO<sub>2</sub> data from Bloss et al. (2007) were used for NO<sub>x</sub> lifetime calculations. Mean diurnally varying IO and BrO concentrations from LP-DOAS observations (Saiz-Lopez et al., 2007a) were used for NO/NO<sub>2</sub> ratio calculations. The mean noon-time IO and BrO mixing ratios were, respectively, 4.3 and 3.8 pptv (A. Saiz-Lopez and A. Mahajan, personal communication, 2006). As the sun remained above the horizon (SZA < 90°) throughout the CHABLIS summertime study (24 h daylight), “night-time” IO and BrO were always above the DOAS instrument detection limit.

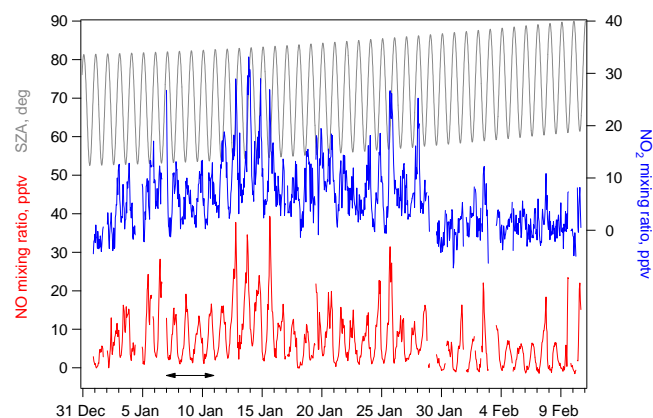
Unless otherwise stated in the text, all kinetic data used for model calculations in this study were taken from JPL Evaluation Number 15 (Sander et al., 2006).

## 3 NO<sub>x</sub> observations

### 3.1 Timeseries

The hourly mean NO and NO<sub>2</sub> mixing ratios (pptv) between 1 January and 10 February 2005, calculated from one minute pollution-filtered data, are plotted in Fig. 2.

NO mixing ratios, plotted in red, rarely go above 20 pptv and display a diurnal cycle, anti-correlating with SZA, plotted in grey. This concentration range (0 to 40 pptv) is in contrast to the high concentrations (up to 500 pptv) reported at South Pole over continental Antarctica (Davis et al., 2001, 2004), but in agreement with other coastal Antarctic NO observations (up to 15 pptv) made at the Neumayer Station (Jones et al., 2000; Weller et al., 2002).

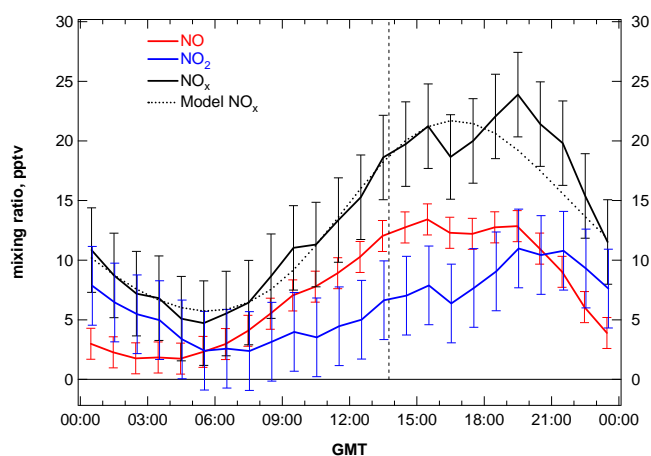


**Fig. 2.** Mixing ratios (ppbv) of NO (red, left-hand scale), NO<sub>2</sub> (blue, right-hand scale) and solar zenith angle (grey, left-hand scale) from 1 January to 10 February 2005. These NO and NO<sub>2</sub> values are one hourly means of the one minute pollution-filtered data. The black arrow indicates the four-day blizzard conditions, when wind speeds in excess of 15 m s<sup>-1</sup> and blowing snow were experienced.

NO<sub>2</sub> mixing ratios, plotted in blue against the right-hand axis with a positive offset for clarity, also show a diurnal cycle, although it is not as distinct as that of NO. At times, particularly at the beginning and end of the 40 day measurement period, NO<sub>2</sub> hourly means appear negative. This is due to the incorporation in our analysis of all NO<sub>2</sub> data, regardless of values below detection limit resulting from poor artefact correction, and hence increased systematic uncertainty when atmospheric NO<sub>2</sub> approaches the detection limit of the instrument (~6 ppbv, see Table 1).

### 3.2 Mean diurnal cycle

Using the observations of Fig. 2, the hourly mean diurnal cycles of NO, NO<sub>2</sub> and NO<sub>x</sub>, averaged over the whole dataset, were derived and plotted in Fig. 3. Error bars for each hourly mean are systematic errors: 1.3 and 3.3 ppbv for NO and NO<sub>2</sub> respectively, and their rss for NO<sub>x</sub>. Both NO and NO<sub>2</sub>, and hence NO<sub>x</sub>, exhibit clear diurnal cycles, a phenomenon which has been widely reported in previous polar studies (Jones et al., 1999; Jacobi et al., 2000; Ridley et al., 2000; Beine et al., 2002; Honrath et al., 2002; Weller et al., 2002). In our study, the NO<sub>x</sub> mean diurnal cycle is very pronounced. Maximum concentrations of ~24 ppbv are observed between 19:00 and 20:00 GMT, and minimum concentrations close to instrumental detection limit are observed in the early hours between 05:00 and 06:00 GMT. It is worth noting that maximum NO<sub>x</sub> values occur ~5 h after the local solar noon at 13:45 GMT. This diurnal variation is in line with that reported for summertime NO<sub>x</sub> measurements at Neumayer, another coastal Antarctic site, with NO<sub>x</sub> maxima of ~25 ppbv at around 19:00 GMT (Jones et al., 1999; Weller et al., 1999). Similarly, Honrath et al. (2002) report NO<sub>x</sub> diurnal cycles at



**Fig. 3.** Hourly mean diurnal cycle of NO (red), NO<sub>2</sub> (blue) and NO<sub>x</sub> (black) for 1 January to 10 February 2005, compiled from the one minute pollution-filtered master dataset. Error bars are systematic errors (uncertainties from Table 1). The dotted black line (Model NO<sub>x</sub>) corresponds to the Steady State NO<sub>x</sub> calculations (see text). The vertical dashed line indicates local noon, 13:45 h.

Summit for summer 1999 and 2000, with maximum median values of ~40 and ~60 ppbv, respectively.

## 4 Steady State NO<sub>x</sub> calculations

### 4.1 Model description

To understand the factors driving the shape and timing of the observed NO<sub>x</sub> diurnal cycle, we consider a simple model based on our current understanding of the photochemistry of polar tropospheric NO<sub>x</sub> (Honrath et al., 1999; Cotter et al., 2003; Jones et al., 2011). NO<sub>x</sub> is emitted from the snow pack at a rate proportional to the photolysis of nitrate ions in the snow  $F(\text{Nitrate})$ , equal to  $2 \times$  our measured  $j\text{Nitrate}^\downarrow$  (see Sect. 2.3), with proportionality constant  $\alpha$ . We balance this term with a constant loss rate defined by a daily mean NO<sub>x</sub> lifetime  $\tau$  which represents all unspecified losses of NO<sub>x</sub>. Our simple model parameterisation is expressed in Eq. (2) below:

$$\frac{\partial [\text{NO}_x]}{\partial t} = (\alpha E(\text{Nitrate})^\downarrow) - \left( \frac{[\text{NO}_x]}{\tau} \right) \quad (2)$$

The production term scaling factor  $\alpha$  has the same dimension as  $[\text{NO}_x]$ , while  $E(\text{Nitrate})^\downarrow$  is in s<sup>-1</sup>.

To model NO<sub>x</sub> concentrations, we can integrate Eq. (2) forwards until a diurnal steady state is reached in typically 2 days. We optimize the value of  $\alpha$  and  $\tau$  by minimising a cost function between the hourly model values and the hourly observed values to provide the best possible fit to the diurnal hourly observations in Fig. 3, as described in Eq. (3):

$$\text{Cost} = \sum_{\text{hours } 0-24} |[\text{Model}] - [\text{Obs}]| \quad (3)$$



This minimisation is achieved using the Powell method described in section 10.5 of Press et al. (1993). Figure 3 shows the comparison between the observed diurnal variation of NO<sub>x</sub> (solid black line) and the best fit values of the model (dashed black line). After optimization the model simulation reproduces many of the features observed, including the early morning NO<sub>x</sub> minimum, and the NO<sub>x</sub> peak after solar noon.

Uncertainties for modelled NO<sub>x</sub>,  $\alpha$  and  $\tau$ , arise from the combined uncertainties of the input parameters of Eq. (2), namely observed NO<sub>x</sub> and  $E(\text{Nitrate})^\downarrow$ , and to a lesser extent errors propagated from the mathematical fitting method employed in Eq. (3). The minimum uncertainty for observed NO<sub>x</sub> is  $\sim 15\%$ , as showed by the systematic error bars for the highest mixing ratios in Fig. 3. Uncertainties for  $E(\text{Nitrate})^\downarrow$  could be as high as 20% near noon on a few days with fully clear skies as discussed in Sect. 2.3.2 (in-snow  $J(\text{Nitrate})^\downarrow$ ). Observed and modelled NO<sub>x</sub> therefore agree within the above combined uncertainties.

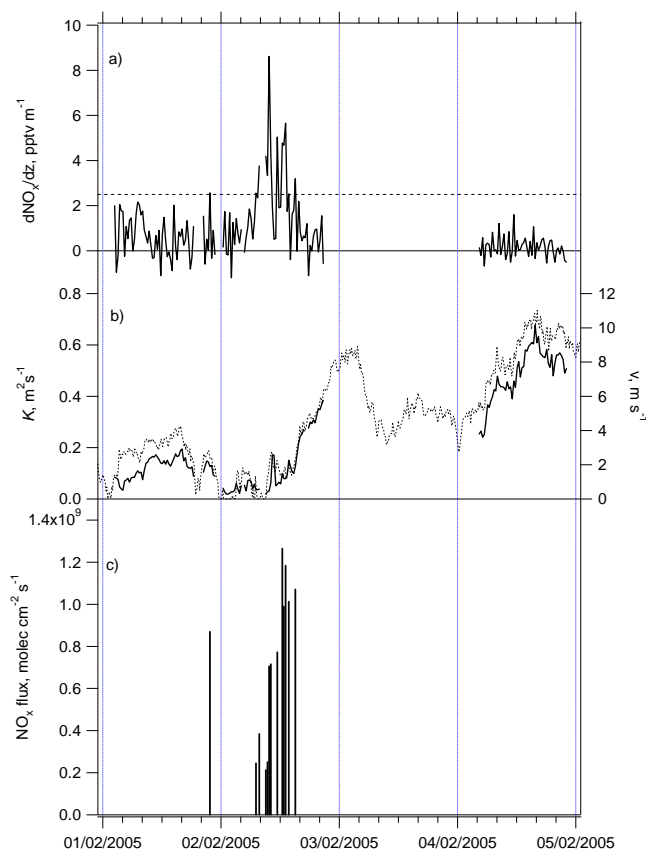
## 4.2 Results: NO<sub>x</sub> production term

Snowpack NO<sub>x</sub> fluxes can be derived from both indirect and direct methods. Using the indirect method described above, we compute a value of 5516 pptv for  $\alpha$ , and a value of 6.38 h for  $\tau$ . Assuming a 100 m summertime boundary layer mixing height (annual mean height for Halley is  $\sim 70$  m, Jones et al., 2008), the product  $\alpha E(\text{Nitrate})^\downarrow$  corresponds to a mean noon emission rate of  $3.48 \times 10^8 \text{ molec cm}^{-2} \text{ s}^{-1}$  for the 1 January to 10 February 2005. This emission rate would scale linearly with a changing boundary layer height, which we note is both difficult to define and highly variable during Antarctic summer (Anderson and Neff, 2008).

In their indirect-method study using a snow pack radiative transfer model methodology, Jones et al. (2011) estimated a daily average emission rate of  $2.42 \times 10^8 \text{ molec cm}^{-2} \text{ s}^{-1}$  for 18 January 2005 during CHABLIS, with a noon-time rate of  $5.5 \times 10^8 \text{ molec cm}^{-2} \text{ s}^{-1}$  (unpublished data).

Evans et al. (2003) modelled the High Canadian Arctic ( $>55^\circ \text{N}$ ) observations made during the TOPSE airborne campaign in March–May 2000. Their daily averaged model-derived NO<sub>x</sub> flux was equivalent to  $3.6 \times 10^8 \text{ molec cm}^{-2} \text{ s}^{-1}$  for a 200 m boundary layer height.

For a direct assessment, we conducted NO<sub>x</sub> flux measurements for several days at the end of the CHABLIS summer campaign (see Methods). The 20 min averaged NO<sub>x</sub> gradients, defined as  $\frac{\partial \text{NO}_x}{\partial z}$ , where  $\partial z = 4.5 \text{ m}$  (NO<sub>x</sub> sampling inlets height differential) are presented in panel a of Fig. 4. Coincident averaged surface diffusivity  $K$  ( $\text{m}^2 \text{ s}^{-1}$ ) is plotted in panel b, as well as the 10 min averaged wind speed  $v$  ( $\text{m s}^{-1}$ ) to illustrate the local meteorology during the flux measurement period.  $K$  was defined as the product  $k \times z \times U_*$ , where  $k = 0.4$  is the dimensionless von Karman constant,  $U_*$  is the friction velocity ( $\text{m s}^{-1}$ ) defined as the cross product of sonic anemometer data, and  $z = 4 \text{ m}$  is the height of the turbulence



**Fig. 4.** (a) 20 min averaged NO<sub>x</sub> gradients ( $\frac{\partial \text{NO}_x}{\partial z}$ ) estimated from the 1.5 and 6 m high inlets NO<sub>x</sub> measurements; the horizontal dashed line ( $2.5 \text{ pptv m}^{-1}$ ) corresponds to the  $2\sigma$  precision of the gradient measurements; (b) 20 min averaged surface diffusivities ( $K$ ) estimated from the friction velocities  $U_*$  at 4 m height (solid line, left-hand axis), and 10 min averaged wind speeds (dotted line, right-hand axis); (c) 20 min averaged NO<sub>x</sub> fluxes expressed as the product  $\frac{\partial \text{NO}_x}{\partial z} \times K$ , filtered for gradients less than  $2.5 \text{ pptv m}^{-1}$  detection threshold. NO<sub>x</sub> gradient were not measured during 3 February 2005 due to instrument downtime/maintenance.

sensor (see Fig. 1). The NO<sub>x</sub> flux is defined by the product of the gradient and surface diffusivity (Anderson and Neff, 2008). The uncertainty of  $U_*$ , and therefore  $K$ , was estimated using 10 min averaged sonic anemometry data during a day with near neutral boundary layer conditions (similar to 2 February 2005). We computed the relative difference between the  $U_*$  measurement at the 30 m mast, to its measurement 10 m South and 100 m North (see Fig. 1 and Sect. 2.2). The above assessment yielded a measurement uncertainty for  $U_*$  at 4 m of  $\pm 3\%$ .

We evaluate the  $\frac{\partial \text{NO}_x}{\partial z}$  precision from the  $2\sigma$  precision of our NO<sub>x</sub> data around solar noon on 4 February 2005, when low NO<sub>x</sub> gradients ( $<1.6 \text{ pptv m}^{-1}$ ) and high diffusivities were experienced.  $\frac{\partial \text{NO}_x}{\partial z}$  is a differential measurement and therefore does not suffer from the instrumental artefacts discussed in Sect. 2.1. The  $2\sigma$  precision of 1 Hz measurements

**Table 2.** Summary of NO<sub>x</sub> fluxes derived through direct measurements in Arctic and Antarctic studies.

Location	Date	NO <sub>x</sub> flux, molec cm <sup>-2</sup> s <sup>-1</sup>	Reference
Antarctic measurements			
Neumayer 70°39' S, 8°15' W, 42 m	5–7 Feb 1999	~ 3 (+0.3/–0.9) × 10 <sup>8</sup> (noon maxima)	Jones et al. (2001)
South Pole 2835 m	26–30 Nov 2000	3.9 ± 0.4 × 10 <sup>8</sup> (average over period)	Oncley et al. (2004)
Halley V 75°35' S, 26°40' W, 37 m	2 Feb 2005	12.6 × 10 <sup>8</sup> (noon maxima) 7.3 × 10 <sup>8</sup> (07:05–15:05 GMT mean)	This Study (Fig. 4)
Arctic measurements			
Summit, Greenland 72°36' N, 38°30' W, 3200 m	5 Jun–3 Jul 2001	2.5 × 10 <sup>8</sup> (daily average)	Honrath et al. (2002)
Alert, Nunavut, Canada, 82°30' N, 62°18' W, 220 m	9–25 April 2000	≥ 6.7 × 10 <sup>8</sup> (noon maxima)	Beine et al. (2002)

over a 9 min sampling period at one sampling height (see Sect. 2.2) for NO and NO<sub>2</sub> is ±11.6 and ±38.8 pptv respectively, decreasing to ±0.5 and ±1.7 pptv for a 9 min average. The rss of the precisions of two 9 min NO<sub>x</sub> measurements (two heights) yields a 2σ precision for  $\frac{\partial \text{NO}_x}{\partial z}$  of ±2.5 pptv m<sup>-1</sup>. This detection threshold is represented by the horizontal dashed line in panel a of Fig. 4.

The largest uncertainty in our NO<sub>x</sub> flux is arising from the NO<sub>x</sub> gradient term. Most of the NO<sub>x</sub> gradient measurements for 1 and 4 February 2005 fall below the 2.5 pptv m<sup>-1</sup> threshold, and were filtered out in the 20 min averaged NO<sub>x</sub> fluxes (in molec cm<sup>-2</sup> s<sup>-1</sup>) plotted in panel c of Fig. 4.

The mean NO<sub>x</sub> flux measured during 2 February 2005 between 07:05 and 15:05 GMT was 7.3 × 10<sup>8</sup> molec cm<sup>-2</sup> s<sup>-1</sup>, with a noon maximum of 12.6 × 10<sup>8</sup> molec cm<sup>-2</sup> s<sup>-1</sup>. For the broader context, Table 2 shows NO<sub>x</sub> fluxes derived from direct measurements in other polar studies. Simple quantitative comparisons are not reliable due to the varying parameters that may affect the NO<sub>x</sub> fluxes in the different studies (time of year/day, latitude, altitude, cloudiness, nitrate ion snow content). The most similar site to Halley of those listed in Table 2, is Neumayer, where, nonetheless, considerably smaller fluxes were measured.

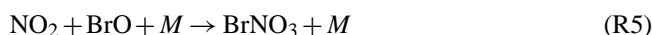
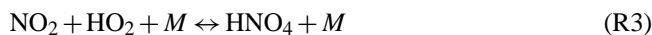
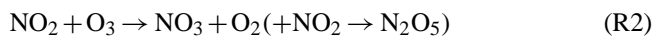
Accurate flux derivations become extremely important for modelling calculations aiming to scale processes up for regional assessments. A long-duration flux study at a single location that can properly assess flux variability with time, as well as compare direct and indirect assessment methods, would therefore seem extremely timely.

## 5 NO<sub>x</sub> lifetime calculations

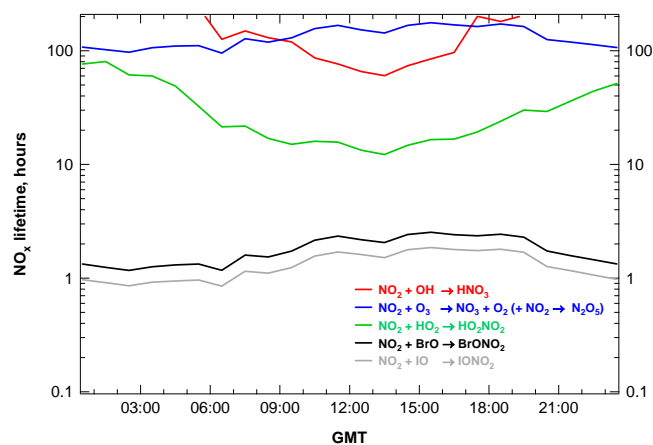
### 5.1 Model description

Our estimated NO<sub>x</sub> emission flux is consistent with previous studies. However our estimated daily mean NO<sub>x</sub> lifetime of 6.38 h appears relatively short given known NO<sub>x</sub> losses. Ridley et al. (2000) and Beine et al. (2002) did not derive NO<sub>x</sub> lifetimes from their respective measurements at Alert. However, the pronounced diurnal cycle of NO<sub>x</sub> concentrations reported by Ridley et al. (2000), with noon-maximum, may suggest NO<sub>x</sub> lifetimes shorter than 4 h (Evans et al., 2003). Davis et al. (2004) report enhanced NO<sub>x</sub> lifetimes at South Pole. Although NO<sub>x</sub> concentrations at South Pole are much more elevated than at Halley (up to 800 pptv), Davis et al. report box modelled NO<sub>x</sub> lifetimes (loss to HO<sub>x</sub> and HNO<sub>4</sub>) as function of NO<sub>x</sub> concentration and found that for concentrations below ~170 pptv, their estimated NO<sub>x</sub> lifetimes remain constant at ~8 h.

Using available observations, we consider the maximum rate of NO<sub>2</sub> loss via a variety of conventional HO<sub>x</sub> and halogen oxidation processes:







**Fig. 5.** Diurnal NO<sub>x</sub> lifetimes, derived from calculations of known NO<sub>2</sub> oxidation-loss pathways.

All of these reactions represent NO<sub>2</sub> losses. To convert the NO<sub>2</sub> losses to a NO<sub>x</sub> lifetime we use Eq. (4) (Seinfeld and Pandis, 1998):

$$\tau_{\text{NO}_x} = (k_i [\text{Oxidant}])^{-1} \left( 1 + \frac{[\text{NO}]}{[\text{NO}_2]} \right) \quad (4)$$

where  $k_i$  is the oxidation rate constant for reaction  $R_i$ . HO<sub>x</sub> observations reported in Bloss et al. (2007) were used for Reactions (1) and (3). For Reactions (4) and (5), we assumed a constant 3 pptv IO and 3 pptv BrO mixing ratio, consistent with the DOAS summertime observations conducted by Saiz-Lopez et al. (2007a) during CHABLIS.

## 5.2 Results

Equation (4) now allows us to calculate the NO<sub>x</sub> lifetimes for each reaction and how they vary around the day. This is shown in Fig. 5. The conventional NO<sub>x</sub> loss pathways, HNO<sub>3</sub> and NO<sub>3</sub> formation represented by the red and blue lines, are much too slow to be significant. They suggest NO<sub>x</sub> lifetimes of the order of at least 100 h whereas the observations suggest a lifetime of ~6 h.

HNO<sub>4</sub> formation (green line) offers a potentially more efficient loss process with a mean NO<sub>x</sub> lifetime of the order of 20 h, still significantly longer than that derived from the observations. Once sequestered in the HNO<sub>4</sub> reservoir, further aerosol uptake and hydrolysis is required to ultimately remove NO<sub>x</sub>. However, HNO<sub>4</sub> can undergo both photolysis and thermal decomposition prior to aerosol uptake. Using the radiative transfer model described in Saiz-Lopez et al. (2008), we estimate a maximum noon-time  $J\text{HNO}_4$  value of  $5.05 \times 10^{-6} \text{ s}^{-1}$ , corresponding to a photolysis lifetime greater than 2 days, which is therefore negligible. Using the termolecular reaction and equilibrium constants for Reaction (3) from the JPL Evaluation Number 15 (Sander et al., 2006), and the mean diurnal temperatures and pressures

for summertime CHABLIS, we compute HNO<sub>4</sub> lifetimes to thermal decomposition ranging from 8 to 15 min. This proves that during our study, the HNO<sub>4</sub> reservoir was too thermally labile to play a significant role in NO<sub>x</sub> sequestration and further loss.

Even with the low concentrations of IO and BrO observed during summertime CHABLIS, the production of halogen nitrates appears to be the most significant sink for NO<sub>x</sub>, as indicated by the black and grey lines in Fig. 5. The NO<sub>x</sub> lifetime to these reactions is very short, with a combined diurnal mean lifetime approaching half an hour, fast enough to explain the steady state derived diurnal mean lifetime of ~6 h. However, for the production of halogen nitrates to act as a net NO<sub>x</sub> sink, the halogen nitrates must hydrolyse on the surface of aerosol. This process competes with their photolysis. These two processes are considered next.

## 5.3 XNO<sub>3</sub> heterogeneous loss lifetime calculations

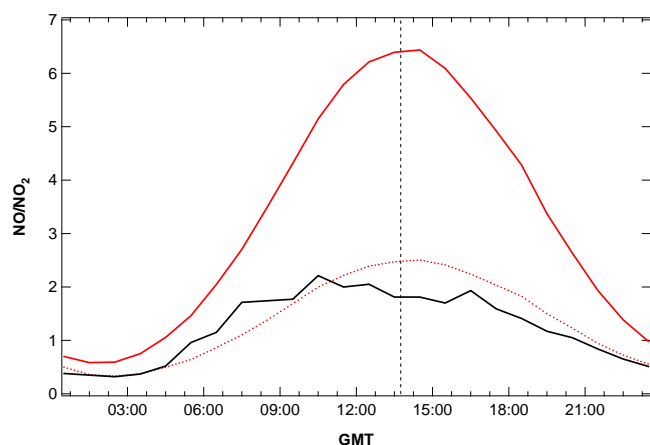
We estimate the lifetime of halogen nitrates to their heterogeneous uptake in the aerosol phase. This treatment is similar to that used in the 1-D box modelling study of Saiz-Lopez et al. (2008) and zero-D box modelling study of Bloss et al. (2010), whereby the uptake to aerosol represents irreversible loss from the gas phase, and subsequent condensed-phase (hydrolysis) reactions are not specified. We use the free molecular transfer theory and estimate the heterogeneous uptake rate constant  $k_{\text{het}}$  using Eq. (5):

$$k_{\text{het}} = \frac{\bar{c} \gamma \text{SA}}{4} \quad (5)$$

where  $\bar{c}$  is the mean gas velocity,  $\gamma$  is the reaction probability, and SA is the aerosol surface area.

Physical properties of aerosol particles were not measured during CHABLIS. However aerosol surface area measurements were reported by Davison et al. (1996) on board the Royal Research Ship Bransfield moored along the Brunt Ice Shelf near Halley, between 21 and 31 December 1992. The mean geometric aerosol surface area for measurements made south of 58° S with an ASASP-X volatility analyser was  $\sim 0.32 \pm 0.01 \times 10^{-7} \text{ cm}^2 \text{ cm}^{-3}$ . The authors argue that the ASASP-X technique only measures the “dry” geometric aerosol SA for the accumulation mode size range 0.1 to 0.4 μm diameter, and therefore does not represent the full aerosol size range (0.1 to 3 μm). The actual SA is likely to be higher and varying with relative humidity, up to 4 times for 75–80 % RH. The studies of Saiz-Lopez et al. (2008) and Bloss et al. (2010) used an SA of  $10^{-7} \text{ cm}^2 \text{ cm}^{-3}$ , and we used the same value, in line with the above findings.

We assume the same dimensionless  $\gamma$  reaction probability for both BrNO<sub>3</sub> and INO<sub>3</sub> of 0.8 (Sander et al., 2006). Using Eq. (5), we compute daily mean lifetimes to heterogeneous uptake of 0.7 and 0.8 h for BrNO<sub>3</sub> and INO<sub>3</sub>, respectively. Given the lifetimes derived from the gas-phase formation of XNO<sub>3</sub> (black and grey lines in Fig. 5), the rate limiting step



**Fig. 6.** Solid black line: hourly mean diurnal cycle of observed NO/NO<sub>2</sub> ratios. Solid red line: NO/NO<sub>2</sub> ratios calculated using “classic” Leighton relationship (ozone as sole oxidant). Dotted red line: NO/NO<sub>2</sub> ratios calculated using “extended” Leighton relationship (ozone plus diurnally varying IO and BrO oxidants). The vertical dashed line indicates local noon, 13:45 h.

for NO<sub>x</sub> loss is the gas-phase formation. These lifetimes now need to be compared to the loss due to photolysis.

#### 5.4 XNO<sub>3</sub> photolysis effects

We use the parameterisation of Bloss et al. (2010) for estimating the photolysis rates of halogen species, based on the TUV radiative transfer model and our  $JNO_2^{\text{total}}$  measurements. At solar noon, we find that INO<sub>3</sub> and BrNO<sub>3</sub> photolyse rapidly (lifetimes  $\sim 2\text{--}5$  min), whereas during low insolation hours the BrNO<sub>3</sub> and INO<sub>3</sub> photolysis lifetimes increase to  $\sim 1$  h and  $\sim 20$  min respectively, thus approaching the time scales for XNO<sub>3</sub> hydrolysis. Although the photolysis of the halogen nitrates dominates over their heterogeneous loss during high insolation hours, at greater solar zenith angles the two processes are able to compete efficiently, allowing the heterogeneous uptake of halogen nitrates to occur rapidly, precisely at the time when one expects NO<sub>x</sub> net loss pathways to dominate, as indicated by the sharp drop in NO<sub>x</sub> mixing ratios in the mean diurnal cycle in Fig. 3.

## 6 NO/NO<sub>2</sub> ratios

### 6.1 Observed NO to NO<sub>2</sub> ratios

We now turn our attention from the evolution of the NO<sub>x</sub> concentration to that of the NO to NO<sub>2</sub> partitioning. We derive observed hourly NO/NO<sub>2</sub> ratios from 1 min data, as shown by the solid black line in Fig. 6. The highest ratios ( $2.2 \pm 0.2$ ,  $2\sigma$  standard error) are measured between 10:00 and 11:00, whereas the lowest ratios ( $0.32 \pm 0.04$ ) occur between 02:00 and 03:00. We expect our observed NO/NO<sub>2</sub> diurnal cycle

to be centred about solar noon (i.e. maximum  $JNO_2$ ). However the inclusion of all NO<sub>2</sub> data (i.e. also close to/below detection limit), is affecting the shape of our diurnal cycle (see Sect. 3). Here we focus chiefly on the magnitude of the ratios.

### 6.2 “Classic” Leighton relationship

Classically the NO to NO<sub>2</sub> ratio is defined solely by the steady state reaction between NO and O<sub>3</sub>, and NO<sub>2</sub> photolysis; this relationship is known as the Leighton relationship (Leighton, 1961). The reaction rates of NO + HO<sub>2</sub> and NO + RO<sub>2</sub> are negligible compared to the reaction with O<sub>3</sub> ( $< 2\%$  contribution to NO  $\rightarrow$  NO<sub>2</sub> cycling). Hence:

$$\frac{[\text{NO}]}{[\text{NO}_2]} = \frac{JNO_2^{\text{total}}}{k_{O_3}[\text{O}_3]} \quad (6)$$

The NO/NO<sub>2</sub> ratios calculated by this method are shown in Fig. 6 as the solid red line. This reveals a large discrepancy between observed and calculated NO/NO<sub>2</sub>, with calculated ratios being almost three times higher at local noon.

### 6.3 “Extended” Leighton relationship – halogen effects

The reaction between halogen oxide radicals (XO) and NO is rapid and has been shown in previous studies to impact NO/NO<sub>2</sub> ratios (e.g. Ridley et al., 2000; Evans et al., 2003; Ridley and Orlando, 2003; Morin et al., 2007; Saiz-Lopez et al., 2008). The discrepancy between observed and the “classic” Leighton relationship ratios reflects the halogen oxides reacting with NO to create NO<sub>2</sub>. Equation (6) can be altered to reflect this extra chemistry given by the “extended” Leighton relationship:

$$\frac{[\text{NO}]}{[\text{NO}_2]} = \frac{JNO_2^{\text{total}}}{k_{O_3}[\text{O}_3] + k_{\text{BrO}}[\text{BrO}] + k_{\text{IO}}[\text{IO}]} \quad (7)$$

Using diurnally varying BrO and IO (see Methods) and Eq. (7), we calculate NO/NO<sub>2</sub> ratios as shown in Fig. 6 by the dotted red line. The inclusion of halogen oxides in our calculations markedly decreases the ratio and brings it into agreement with our observations. Thus halogen oxides play a highly significant role in decreasing the NO/NO<sub>2</sub> ratio.

Noon-time NO/NO<sub>2</sub> ratios measured at Neumayer in February 1999 (Jones et al., 2000) were even lower ( $\sim 0.75$ ) than our observed ratios, suggesting that the impact of XO chemistry in controlling NO<sub>x</sub> partitioning at Neumayer might be even more pronounced than at Halley.

At Alert in the high Canadian Arctic, Ridley et al. (2000) observed diurnally varying NO/NO<sub>2</sub> in March–April 1998, with ratios reaching up to  $\sim 0.5$  at low SZA ( $75^\circ$ ). The authors calculated a  $\leq 10$  pptv burden for radicals (HO<sub>2</sub> + RO<sub>2</sub> + BrO + ClO) in order to sustain their observed low ratios. It is worth remembering that these observations were carried out in springtime, at a time when BrO is expected to be at its peak.

Our results also corroborate those of the Saiz-Lopez et al. (2008) halogen chemical and transport modelling study, in which their model was constrained with a NO<sub>x</sub> summertime flux of  $2 \times 10^8$  molec cm<sup>-2</sup> s<sup>-1</sup>, assumed to be produced by photochemistry of snow pack nitrate. Without halogen chemistry, they estimate a solar noon NO/NO<sub>2</sub> ratio of  $\sim 3.3$ , which then drops to  $\sim 1.8$  after implementation of the halogen chemistry scheme.

## 7 Discussion

We showed that our observed mean NO<sub>x</sub> diurnal cycle can be reproduced using a simple chemical steady state NO<sub>x</sub> analysis. A credible estimate for the mean NO<sub>x</sub> emission rate from snow was derived. Employing up-to-date kinetics data and known NO<sub>2</sub> oxidation mechanisms, we identified and verified viable NO<sub>x</sub> chemical loss pathways leading to short NO<sub>x</sub> lifetimes. Both our methodology in the present paper and that of Anderson and Bauguitte (2007) (discussed earlier) use simplified models with inherent caveats. While assuming a fixed 100 m boundary layer depth for deriving our model NO<sub>x</sub> flux (see Sect. 4.2), with “near-instant” vertical mixing, we clearly ignore the atmospheric boundary layer physics highlighted in the Anderson and Bauguitte (2007) study. Conversely, the latter physics-based study acknowledges under-representing the highly complex underlying NO<sub>x</sub>-HO<sub>x</sub> and halogen chemistry. It is most probable that a truer representation of our observations requires a combined approach from the chemistry and physics point-of-view.

Our NO<sub>x</sub> lifetime study identified apparent NO<sub>2</sub> oxidation loss pathways involving halogen nitrates, and their aerosol uptake. Although the parameterisation of these processes entails uncertainties (aerosol surface area, reaction probability), we show that the kinetics are sufficiently fast to explain the relatively short NO<sub>x</sub> lifetimes initially derived from our steady state calculations.

Our assessment did not include chlorine chemistry, which may play a role, but which we are unable to examine in a constrained way due to lack of observations. For known chemistry, we note that gamma for chlorine nitrate hydrolysis is small  $\sim 0.002$  compared to the 0.3 value for bromine nitrate. It would therefore be a less significant NO<sub>x</sub> sink event if ClONO<sub>2</sub> was at the same concentration as BrONO<sub>2</sub>. The rate constant for ClO+NO is half that of BrO+NO so is less likely to impact the NO/NO<sub>2</sub> ratio. The possibility clearly remains, however, that other chemical channels exist for moving chlorine into its active forms, and if so, there is a high chance that they would be active under the conditions experienced during CHABLIS, i.e. in coastal Antarctica during summer.

It is noteworthy that the NO<sub>x</sub> diurnal cycle does not appear to be affected by extreme changes in the local atmosphere and snow surface, such as during the 7–10 January 2005 pe-

riod, when the blizzard wind speeds in excess of 15 m s<sup>-1</sup> and blowing snow were experienced (see Fig. 2). Even under such extreme conditions, neither the amplitude nor the timing of the diurnal maximum are outside the range of more quiescent conditions. In these very turbulent atmospheric conditions, we expect well-diffused light photolysis of wind-blown snow particles, and therefore NO<sub>x</sub> production would be occurring. Snow pack wind pumping would presumably maintain an efficient NO<sub>x</sub> diffusion and mixing in the overlying boundary layer. Equally the process of NO<sub>x</sub> loss by heterogeneous uptake to the aerosol phase of halide nitrates would still be ongoing with enhanced aerosol scavenging.

The impact of the source of NO<sub>x</sub> from snow photolysis on the Antarctic boundary layer composition might be expected to lead to O<sub>3</sub> production; however in coastal regions the halogens tend to mitigate this effect leading to a reduced NO<sub>x</sub> lifetime and a reduction in the NO/NO<sub>2</sub> ratio. Away from marine influences, the impact of photolysis of snow phase nitrate is significantly different as can be seen at the South Pole (Crawford et al., 2001; Jones and Wolff, 2003; Helmig et al., 2008; Oltmans et al., 2008; Legrand et al., 2009). The geographical extent to which halogens mitigate the impact is as yet unknown.

The link between NO<sub>x</sub> emissions from snow and local oxidation by halogens and heterogeneous loss to BrNO<sub>3</sub> was also clearly demonstrated using a very different approach, namely isotopic measurements of nitrate both in the Arctic and Antarctic (Morin et al., 2008; Morin et al., 2009).

The impact of halogens on HO<sub>x</sub> and O<sub>x</sub> chemistry in coastal Antarctica, the Arctic and mid-latitudes is well documented (e.g. Sjostedt et al., 2007; Grannas et al., 2007; Simpson et al., 2007; Saiz-Lopez et al., 2008; Read et al., 2008). However, the impact on NO<sub>x</sub> is less well characterised. It seems clear from this study that, in coastal Antarctica, the impact on NO<sub>x</sub> lifetime and partitioning is also significant, although this impact is highly dependent on atmospheric dynamics. For instance, Legrand et al. (2009) found no evidence of active halogen chemistry at the French Dumont d’Urville Research Station in coastal Antarctica, where air masses are mostly brought from the Antarctic Plateau through katabatic flow. Our results may however signal an influence that is active beyond the Antarctic coastal region and into the global marine boundary layer on climate-relevant parameters such as O<sub>3</sub> and OH.

## 8 Conclusions

At Halley, the source of NO<sub>x</sub> is mainly a local photochemically driven emission from the snow pack. However, observed concentrations peak relatively close to solar noon ( $\sim 5$  h) suggesting a much shorter lifetime than is possible through simple HO<sub>x</sub>-NO<sub>x</sub> photochemistry alone. The shorter lifetime ( $\sim 6$  h) is consistent with halogen photochemistry, notably conversion into halogen nitrate. Given the lack of

an observational constraint, the fate of these halogen nitrates is uncertain, though heterogeneous uptake onto aerosol and subsequent deposition seems a viable mechanism in this region to return nitrate to the snow surface. This is a dominant uncertainty in evaluating the NO<sub>x</sub> budget. We found the HNO<sub>4</sub> heterogeneous loss channel for NO<sub>x</sub> to be negligible in the relatively warm summertime, although it may play a more significant competing role in the colder springtime.

The halogen chemistry also significantly perturbs the NO to NO<sub>2</sub> ratio resulting in much lower NO concentrations than would be otherwise observed, for instance in inland Antarctica. The presence of halogens in the coastal Antarctic region, and presumably in the Arctic, therefore mitigates the atmospheric response of the photochemical NO<sub>x</sub> emissions from snow.

*Acknowledgements.* We wish to thank the Halley 2004/05 overwintering staff, in particular Craig Nicholls and Vanessa O'Brien for being so understanding and patient in the overcrowded Clean Air Sector Laboratory. We also thank Steve Colwell for providing meteorological data. We wish to thank Samuel Morin for encouraging and constructive comments during the review process. We are also grateful to one anonymous referee who reviewed this paper over a number of exchanges, and whose comments undoubtedly improved the manuscript. This work was funded by the UK Natural Environment Research Council Antarctic Funding Initiative (grant number NER/G/S/2001/00010) and by the British Antarctic Survey core-funded projects SAGES-AIR and CACHE-CEFAC.

Edited by: W. T. Sturges

## References

- Anderson, P. S. and Bauguitte, S. J.-B.: Behaviour of tracer diffusion in simple atmospheric boundary layer models, *Atmos. Chem. Phys.*, 7, 5147–5158, doi:10.5194/acp-7-5147-2007, 2007.
- Anderson, P. S. and Neff, W. D.: Boundary layer physics over snow and ice, *Atmos. Chem. Phys.*, 8, 3563–3582, doi:10.5194/acp-8-3563-2008, 2008.
- Barrie, L. A., Bottenheim, J. W., and Hart, W. R.: Polar Sunrise Experiment 1992 (PSE-1992) – Preface, *J. Geophys. Res.*, 99, 25313–25314, 1994.
- Beine, H. J., Jaffe, D. A., Herring, J. A., Kelley, J. A., Krognes, T., and Stordal, F.: High-latitude springtime photochemistry. Part I: NO<sub>x</sub>, PAN and ozone relationships, *J. Atmos. Chem.*, 27, 127–153, 1997.
- Beine, H. J., Honrath, R. E., Dominé, F., Simpson, W. R., and Fuentes, J. D.: NO<sub>x</sub> during background and ozone depletion periods at Alert: Fluxes above the snow surface, *J. Geophys. Res.*, 107, 4584, doi:10.1029/2002JD002082, 2002.
- Bloss, W. J., Lee, J. D., Heard, D. E., Salmon, R. A., Bauguitte, S. J.-B., Roscoe, H. K., and Jones, A. E.: Observations of OH and HO<sub>2</sub> radicals in coastal Antarctica, *Atmos. Chem. Phys.*, 7, 4171–4185, doi:10.5194/acp-7-4171-2007, 2007.
- Bloss, W. J., Camredon, M., Lee, J. D., Heard, D. E., Plane, J. M. C., Saiz-Lopez, A., Bauguitte, S. J.-B., Salmon, R. A., and Jones, A. E.: Coupling of HO<sub>x</sub>, NO<sub>x</sub> and halogen chemistry in the antarctic boundary layer, *Atmos. Chem. Phys.*, 10, 10187–10209, doi:10.5194/acp-10-10187-2010, 2010.
- Burley, J. D. and Johnston, H. S.: Ionic mechanisms for heterogeneous stratospheric reactions and ultraviolet photoabsorption cross-sections for NO<sub>2</sub><sup>+</sup>, HNO<sub>3</sub>, and NO<sub>3</sub><sup>-</sup> in sulfuric-acid, *Geophys. Res. Lett.*, 19, 1359–1362, 1992.
- Chen, G., Davis, D., Crawford, J., Mauldin, L., Eisele, F., Huey, G., Slusher, D., Tanner, D. J., Dibb, J., Buhr, M., Hutterli, M. A., McConnell, J., Lefer, B., Shetter, R., Blake, D., Lombardi, K., and Arnoldy, J.: A reassessment of HO<sub>x</sub> chemistry based on observations recorded during ISCAT 2000, *Atmos. Environ.*, 38, 5451–5462, 2004.
- Chu, L. and Anastasio, C.: Quantum yields of hydroxyl radical and nitrogen dioxide from the photolysis of nitrate on ice, *J. Phys. Chem. A*, 107, 9594–9602, 2003.
- Clemittshaw, K. C.: Coupling between the Tropospheric Photochemistry of Nitrous Acid (HONO) and Nitric Acid (HNO<sub>3</sub>), *Environ. Chem.*, 3, 31–34, doi:10.1071/EN05073, 2006.
- Cotter, E. S. N., Jones, A. E., Wolff, E. W., and Bauguitte, S. J.-B.: What controls photochemical NO and NO<sub>2</sub> production from Antarctic snow? Laboratory investigation assessing the wavelength and temperature dependence, *J. Geophys. Res.*, 108, 4147, doi:10.1029/2002JD002602, 2003.
- Crawford, J. H., Davis, D. D., Chen, G., Buhr, M., Oltmans, S., Weller, R., Mauldin, L., Eisele, F., Shetter, R., Lefer, B., Arimoto, R., and Hogan, A.: Evidence for photochemical production of ozone at the South Pole surface, *Geophys. Res. Lett.*, 28, 3641–3644, 2001.
- Davis, D., Chen, G., Buhr, M., Arimoto, R., Hogan, A., Eisele, F., Mauldin, L., Tanner, D., Shetter, R., Lefer, B., and McMurry, P.: Unexpected High Levels of NO Observed at South Pole, *Geophys. Res. Lett.*, 28, 3625–3628, 2001.
- Davis, D., Nowak, J. B., Chen, G., Buhr, M., Crawford, J., Lenschow, D., Lefer, B., Shetter, R., Eisele, F., Mauldin, L., and Hogan, A.: South Pole NO<sub>x</sub> Chemistry: An assessment of factors controlling variability and absolute levels, *Atmos. Environ.*, 38, 5375–5388, 2004.
- Davison, B., Hewitt, C. N., O'Dowd, C. D., Lowe, J. A., Smith, M. H., Schwikowski, M., Baltensperger, U., and Harrison, R. M.: Dimethyl sulphide, methane sulfonic acid and physicochemical aerosol properties in Atlantic air from the United Kingdom to Halley Bay, *J. Geophys. Res.*, 101, 22855–22867, 1996.
- Dibb, J. E., Talbot, R. W., Munger, J. W., Jacob, D. J., and Fan, S.-M.: Air-snow exchange of HNO<sub>3</sub> and NO<sub>y</sub> at Summit, Greenland, *J. Geophys. Res.*, 103, 3475–3486, 1998.
- Dibb, J. E., Arsenault, M., Peterson, M. C., and Honrath, R. E.: Fast nitrogen oxide chemistry in Summit, Greenland snow, *Atmos. Environ.*, 36, 2501–2511, 2002.
- Dominé, F. and Shepson, P. B.: Air-snow interactions and atmospheric chemistry, *Science*, 297, 1506–1510, 2002.
- Evans, M. J., Jacob, D. J., Atlas, E., Cantrell, C. A., Eisele, F., Flocke, F., Fried, A., Mauldin, R. L., Ridley, B. A., Wert, B., Talbot, R., Blake, D., Heikes, B., Snow, J., Walega, J., Weinheimer, A. J., and Dibb, J.: Coupled evolution of BrO<sub>x</sub>-ClO<sub>x</sub>-HO<sub>x</sub>-NO<sub>x</sub> chemistry during bromine-catalyzed ozone depletion events in the arctic boundary layer, *J. Geophys. Res.*, 108, 8368, doi:10.1029/2002JD002732, 2003.
- Fisher, F. N., King, M. D., and Lee-Taylor, J.: Extinction of UV-visible radiation in wet midlatitude (maritime) snow:

- Implications for increased NO<sub>x</sub> emission, *J. Geophys. Res.*, 110, D21301, doi:10.1029/2005JD005963, 2005.
- Grannas, A. M., Jones, A. E., Dibb, J., Ammann, M., Anastasio, C., Beine, H. J., Bergin, M., Bottenheim, J., Boxe, C. S., Carver, G., Chen, G., Crawford, J. H., Dominé, F., Frey, M. M., Guzmán, M. I., Heard, D. E., Helmig, D., Hoffmann, M. R., Honrath, R. E., Huey, L. G., Hutterli, M., Jacobi, H. W., Klán, P., Lefter, B., McConnell, J., Plane, J., Sander, R., Savarino, J., Shepson, P. B., Simpson, W. R., Sodeau, J. R., von Glasow, R., Weller, R., Wolff, E. W., and Zhu, T.: An overview of snow photochemistry: evidence, mechanisms and impacts, *Atmos. Chem. Phys.*, 7, 4329–4373, doi:10.5194/acp-7-4329-2007, 2007.
- Grenfell, T. C.: A radiative-transfer model for sea ice with vertical structure variations, *J. Geophys. Res.*, 96, 16991–17001, 1991.
- Helmig, D., Johnson, B., Oltmans, S. J., Neff, W., Eisele, F., and Davis, D. D.: Elevated ozone in the boundary-layer at South Pole, *Atmos. Environ.*, 42, 2788–2803, 2008.
- Honrath, R. E., Peterson, M. C., Guo, S., Dibb, J. E., Shepson, P. B., and Campbell, B.: Evidence of NO<sub>x</sub> Production Within or Upon Ice Particles in the Greenland Snowpack, *Geophys. Res. Lett.*, 26, 695–698, 1999.
- Honrath, R. E., Lu, Y., Peterson, M. C., Dibb, J. E., Arseneault, M. A., Cullen, N. J., and Steffen, K.: Vertical fluxes of NO<sub>x</sub>, HONO, and HNO<sub>3</sub> above the snowpack at Summit, Greenland, *Atmos. Environ.*, 36, 2629–2640, 2002.
- Jacob, D. J., Crawford, J. H., Maring, H., Clarke, A. D., Dibb, J. E., Emmons, L. K., Ferrare, R. A., Hostetler, C. A., Russell, P. B., Singh, H. B., Thompson, A. M., Shaw, G. E., McCauley, E., Pederson, J. R., and Fisher, J. A.: The Arctic Research of the Composition of the Troposphere from Aircraft and Satellites (ARCTAS) mission: design, execution, and first results, *Atmos. Chem. Phys.*, 10, 5191–5212, doi:10.5194/acp-10-5191-2010, 2010.
- Jacobi, H.-W., Weller, R., Jones, A. E., Anderson, P. S., and Schrems, O.: Peroxyacetyl nitrate (PAN) concentrations in the Antarctic troposphere measured during the photochemical experiment at Neumayer (PEAN'99), *Atmos. Environ.*, 34, 5235–5247, 2000.
- Jones, A. E. and Wolff, E. W.: An analysis of the oxidation potential of the South Pole boundary layer and the influence of stratospheric ozone depletion, *J. Geophys. Res.*, 108, 4565, doi:10.1029/2003JD003379, 2003.
- Jones, A. E., Weller, R., Wolff, E. W., and Jacobi, H.-W.: Speciation and Rate of Photochemical NO and NO<sub>2</sub> Production in Antarctic Snow, *Geophys. Res. Lett.*, 27, 345–348, 2000.
- Jones, A. E., Weller, R., Anderson, P. S., Jacobi, H.-W., Wolff, E. W., Schrems, O., and Miller, H.: Measurements of NO<sub>x</sub> emissions from the Antarctic snowpack, *Geophys. Res. Lett.*, 28, 1499–1502, 2001.
- Jones, A. E., Wolff, E. W., Salmon, R. A., Bauguitte, S. J.-B., Roscoe, H. K., Anderson, P. S., Ames, D., Clemitshaw, K. C., Fleming, Z. L., Bloss, W. J., Heard, D. E., Lee, J. D., Read, K. A., Hamer, P., Shallcross, D. E., Jackson, A. V., Walker, S. L., Lewis, A. C., Mills, G. P., Plane, J. M. C., Saiz-Lopez, A., Sturges, W. T., and Worton, D. R.: Chemistry of the Antarctic Boundary Layer and the Interface with Snow: an overview of the CHABLIS campaign, *Atmos. Chem. Phys.*, 8, 3789–3803, doi:10.5194/acp-8-3789-2008, 2008.
- Jones, A. E., Wolff, E. W., Ames, D., Bauguitte, S. J.-B., Clemitshaw, K. C., Fleming, Z., Mills, G. P., Saiz-Lopez, A., Salmon, R. A., Sturges, W. T., and Worton, D. R.: The multi-seasonal NO<sub>y</sub> budget in coastal Antarctica and its link with surface snow and ice core nitrate: results from the CHABLIS campaign, *Atmos. Chem. Phys.*, 11, 9271–9285, doi:10.5194/acp-11-9271-2011, 2011.
- Lee-Taylor, J. and Madronich, S.: Calculation of actinic fluxes with a coupled atmosphere-snow radiative transfer model, *J. Geophys. Res.*, 107, 4796, doi:10.1029/2002JD002084, 2002.
- Legrand, M., Preunkert, S., Jourdain, B., Gallée, H., Goutail, F., Weller, R., and Savarino, J.: Year round record of surface ozone at coastal (Dumont d'Urville) and inland (Concordia) sites in East Antarctica, *J. Geophys. Res.*, 114, D20306, doi:10.1029/2008JD011667, 2009.
- Leighton, P. A.: Photochemistry of Air Pollution, Vol. IX, Physical Chemistry: A Series of Monographs, edited by: Hutchinson, E. and Ryssleberghe, P. V., Academic Press, New York, 1961.
- Li, Z., Friedl, R. R., Moore, S. B., and Sander, S. P.: Interaction of peroxyxynitric acid with solid H<sub>2</sub>O ice, *J. Geophys. Res.* 101, 6795–6802, 1996.
- Madronich, S.: Photodissociation in the Atmosphere: 1. Actinic Flux and the Effects of Ground Reflections and Clouds, *J. Geophys. Res.*, 92, 9740–9752, 1987.
- Morin, S., Savarino, J., Bekki, S., Gong, S., and Bottenheim, J. W.: Signature of Arctic surface ozone depletion events in the isotope anomaly ( $\Delta^{17}\text{O}$ ) of atmospheric nitrate, *Atmos. Chem. Phys.*, 7, 1451–1469, doi:10.5194/acp-7-1451-2007, 2007.
- Morin, S., Savarino, J., Frey, M. M., Yan, N., Bekki, S., Bottenheim, J. W., and Martins, J. M. F.: Tracing the Origin and Fate of NO<sub>x</sub> in the Arctic Atmosphere Using Stable Isotopes in Nitrate, *Science*, 322, 730, doi:10.1126/science.1161910, 2008.
- Morin, S., Savarino, J., Frey, M. M., Dominé, F., Jacobi, H.-W., Kaleschke, L., and Martins, J. M. F.: Comprehensive isotopic composition of atmospheric nitrate in the Atlantic Ocean boundary layer from 65° S to 79° N, *J. Geophys. Res.*, 114, D05303, doi:10.1029/2008JD010696, 2009.
- Oltmans, S. J., Johnson, B. J., and Helmig, D.: Episodes of high surface-ozone amounts at South Pole during summer and their impact on the long-term surface-ozone variation, *Atmos. Environ.*, 42, 2804–2816, 2008.
- Oncley, S. P., Buhr, M., Lenschow, D. H., Davis, D., and Semmer, S. R.: Observations of summertime NO fluxes and boundary-layer height at the South Pole during ISCAT 2000 using scalar similarity, *Atmos. Environ.*, 38, 5389–5398, 2004.
- Press, W. H., Flannery, B. P., Teukolsky, S. A., and Vetterling, W. T.: Numerical Recipes in C: The Art of Scientific Computing (Second Edn.), Cambridge University Press, doi:10.2277/0521431085, 1993.
- Qiu, R., Green, S. A., Honrath, R. E., Peterson, M. C., Lu, Y., and Dziobak, M.: Measurements of  $\text{JNO}_3^-$  in snow by nitrate-based actinometry, *Atmos. Environ.*, 36, 2563–2571, 2002.
- Read, K. A., Mahajan, A. S., Carpenter, L. J., Evans, M. J., Faria, B. V. E., Heard, D. E., Hopkins, J. R., Lee, J. D., Moller, S. J., Lewis, A. C., Mendes, L., McQuaid, J. B., Oetjen, H., Saiz-Lopez, A., Pilling, M. J., and Plane, J. M. C.: Extensive halogen-mediated ozone destruction over the tropical Atlantic Ocean, *Nature*, 453, 1232–1235, doi:10.1038/nature07035, 2008.
- Richter, A., Wittrock, F., Ladstaetter-Weissenmayer, A., and Burrows, J. P.: GOME measurements of stratospheric and tropospheric BrO, *Adv. Space Res.*, 29, 1667–1672, 2002.

- Ridley, B., Walega, J., Montzka, D., Grahek, F., Atlas, E., Flocke, F., Stroud, V., Deary, J., Gallant, A., Boudries, H., Bottenheim, J., Anlauf, K., Worthy, D., Sumner, A. L., Splawn, B., and Shepson, P.: Is the Arctic Surface Layer a Source and Sink of NO<sub>x</sub> in Winter/Spring?, *J. Atmos. Chem.*, 36, 1–22, 2000.
- Ridley, B. A. and Orlando, J. J.: Active Nitrogen in Surface Ozone Depletion Events at Alert during Spring 1998, *J. Atmos. Chem.*, 44, 1–22, 2003.
- Ryerson, T. B., Williams, E. J., and Fehsenfeld, F. C.: An efficient photolysis system for fast-response NO<sub>2</sub> measurements, *J. Geophys. Res.*, 105, 26447–26461, 2000.
- Salawitch, R. J., Canty, T., Kurosu, T., Chance, K., Liang, Q., da Silva, A., Pawson, S., Nielsen, J. E., Rodriguez, J. M., Bhartia, P. K., Liu, X., Huey, L. G., Liao, J., Stickel, R. E., Tanner, D. J., Dibb, J. E., Simpson, W. R., Donohoue, D., Weinheimer, A., Flocke, F., Knapp, D., Montzka, D., Neuman, J. A., Nowak, J. B., Ryerson, T. B., Oltmans, S., Blake, D. R., Atlas, E. L., Kinnison, D. E., Tilmes, S., Pan, L. L., Hendrick, F., Van Roozendaal, M., Kreher, K., Johnston, P. V., Gao, R. S., Johnson, B., Bui, T. P., Chen, G., Pierce, R. B., Crawford, J. H., and Jacob, D. J.: A new interpretation of total column BrO during Arctic spring, *Geophys. Res. Lett.*, 37, L21805, doi:10.1029/2010GL043798, 2010.
- Sander, S. P., Finlayson-Pitts, B. J., Friedl, R. R., Golden, D. M., Huie, R. E., Keller-Rudek, H., Kolb, C. E., Kurylo, M. J., Molina, M. J., Moortgat, G. K., Orkin, V. L., Ravishankara, A. R., and Wine, P. H.: Chemical Kinetics and Photochemical Data for Use in Atmospheric Studies, Evaluation Number 15, JPL Publication 06-2, Jet Propulsion Laboratory, Pasadena, 2006.
- Saiz-Lopez, A., Mahajan, A. S., Salmon, R. A., Bauguitte, S. J.-B., Jones, A. E., Roscoe, H. K., and Plane, J. M. C.: Boundary layer halogens in coastal Antarctica, *Science*, 317, 348–351, doi:10.1126/science.1141408, 2007a.
- Saiz-Lopez, A., Chance, K., Liu, X., Kurosu, T. P., and Sander, S. P.: First observations of iodine oxide from space, *Geophys. Res. Lett.*, 34, L12812, doi:10.1029/2007GL030111, 2007b.
- Saiz-Lopez, A., Plane, J. M. C., Mahajan, A. S., Anderson, P. S., Bauguitte, S. J.-B., Jones, A. E., Roscoe, H. K., Salmon, R. A., Bloss, W. J., Lee, J. D., and Heard, D. E.: On the vertical distribution of boundary layer halogens over coastal Antarctica: implications for O<sub>3</sub>, HO<sub>x</sub>, NO<sub>x</sub> and the Hg lifetime, *Atmos. Chem. Phys.*, 8, 887–900, doi:10.5194/acp-8-887-2008, 2008.
- Schönhardt, A., Richter, A., Wittrock, F., Kirk, H., Oetjen, H., Roscoe, H. K., and Burrows, J. P.: Observations of iodine monoxide columns from satellite, *Atmos. Chem. Phys.*, 8, 637–653, doi:10.5194/acp-8-637-2008, 2008.
- Seinfeld, J. H. and Pandis, S. N.: Atmospheric Chemistry and Physics: From Air Pollution to Climate Change, John Wiley & Sons, Inc., 1998.
- Simpson, W. R., von Glasow, R., Riedel, K., Anderson, P., Ariya, P., Bottenheim, J., Burrows, J., Carpenter, L. J., Frieß, U., Goodsite, M. E., Heard, D., Hutterli, M., Jacobi, H.-W., Kaleschke, L., Neff, B., Plane, J., Platt, U., Richter, A., Roscoe, H., Sander, R., Shepson, P., Sodeau, J., Steffen, A., Wagner, T., and Wolff, E.: Halogens and their role in polar boundary-layer ozone depletion, *Atmos. Chem. Phys.*, 7, 4375–4418, doi:10.5194/acp-7-4375-2007, 2007.
- Sjostedt, S. J., Huey, L. G., Tanner, D. J., Peischl, J., Chen, G., Dibb, J. E., Lefer, B., Hutterli, M. A., Beyersdorf, A. J., Blake, N. J., Blake, D. R., Sueper, D., Ryerson, T., Burkhardt, J., and Stohl, A.: Observations of hydroxyl and the sum of peroxy radicals at Summit, Greenland during summer 2003, *Atmos. Environ.*, 41, 5122–5137, 2007.
- von Glasow, R., von Kuhlmann, R., Lawrence, M. G., Platt, U., and Crutzen, P. J.: Impact of reactive bromine chemistry in the troposphere, *Atmos. Chem. Phys.*, 4, 2481–2497, doi:10.5194/acp-4-2481-2004, 2004.
- Weller, R., Jones, A. E., Wille, A., Jacobi, H.-W., McIntyre, H. P., Sturges, W. T., Huke, M., and Wagenbach D.: Seasonality of reactive nitrogen oxides (NO<sub>y</sub>) at Neumayer Station, Antarctica, *J. Geophys. Res.*, 107, 4673, doi:10.1029/2002JD002495, 2002.
- Wolff, E. W.: Nitrate in polar ice, in: Ice Core Studies of Global Biogeochemical Cycles, NATO ASI Ser., vol. 130, edited by: Delmas, R. J., Springer-Verlag, New York, 195–224, 1995.
- Wolff, E. W., Jones, A. E., Martin, T. J., and Grenfell, T. C.: Modelling photochemical NO<sub>x</sub> production and nitrate loss in the upper snow pack of Antarctica, *Geophys. Res. Lett.*, 29, 1944, doi:10.1029/2002GL015823, 2002.
- Wolff, E. W., Jones, A. E., Bauguitte, S. J.-B., and Salmon, R. A.: The interpretation of spikes and trends in concentration of nitrate in polar ice cores, based on evidence from snow and atmospheric measurements, *Atmos. Chem. Phys.*, 8, 5627–5634, doi:10.5194/acp-8-5627-2008, 2008.
- Yang, X., Cox, R. A., Warwick, N. J., Pyle, J. A., Carver, G. D., O'Connor, F. M., and Savage, N.: Tropospheric bromine chemistry and its impact on ozone: A model study, *J. Geophys. Res.*, 110, D23311, doi:10.1029/2005JD006244, 2005.
- Zhou, X., Beine, H. J., Honrath, R. E., Fuentes, J. D., Simpson, W., Shepson, P. B., and Bottenheim, J.: Snowpack photochemical production as a source for HONO in the Arctic boundary layer in spring time, *Geophys. Res. Lett.*, 28, 4087–4090, 2001.