

*Corrigendum to*

**“Air mass origins influencing TTL chemical composition over West Africa during 2006 summer monsoon” published in Atmos. Chem. Phys., 10, 10753–10770, 2010**

**K. S. Law<sup>1</sup>, F. Fierli<sup>2</sup>, F. Cairo<sup>2</sup>, H. Schlager<sup>3</sup>, S. Borrmann<sup>4,5</sup>, M. Streibel<sup>6</sup>, E. Real<sup>7</sup>, D. Kunkel<sup>5</sup>, C. Schiller<sup>8</sup>, F. Ravagnani<sup>2</sup>, A. Ulanovsky<sup>9</sup>, F. D’Amato<sup>10</sup>, S. Viciani<sup>10</sup>, and C. M. Volk<sup>11</sup>**

<sup>1</sup>UPMC Univ. Paris 06; Université Versailles St-Quentin; CNRS/INSU, UMR 8190, LATMOS-IPSL, Paris, France

<sup>2</sup>Istituto di Scienze dell’Atmosfera e del Clima, Consiglio Nazionale delle Ricerche (ISAC-CNR), Italy

<sup>3</sup>DLR Institut für Physik der Atmosphäre, Oberpfaffenhofen, Germany

<sup>4</sup>Institute of Atmospheric Physics, Univ. Mainz, Germany

<sup>5</sup>Max-Planck Institute for Chemistry, Particle Chemistry Department, Mainz, Germany

<sup>6</sup>European Ozone Research Coordinating Unit, Univ. Cambridge, UK

<sup>7</sup>CEREA, ENPC/EDF, Univ. Paris-Est, France

<sup>8</sup>ICG-1, Forschungszentrum Jülich, Germany

<sup>9</sup>Central Aerological Observatory, Moscow, Russia

<sup>10</sup>Consiglio Nazionale delle Ricerche-Istituto Nazionale di Ottica (CNR-INO), Firenze, Italy

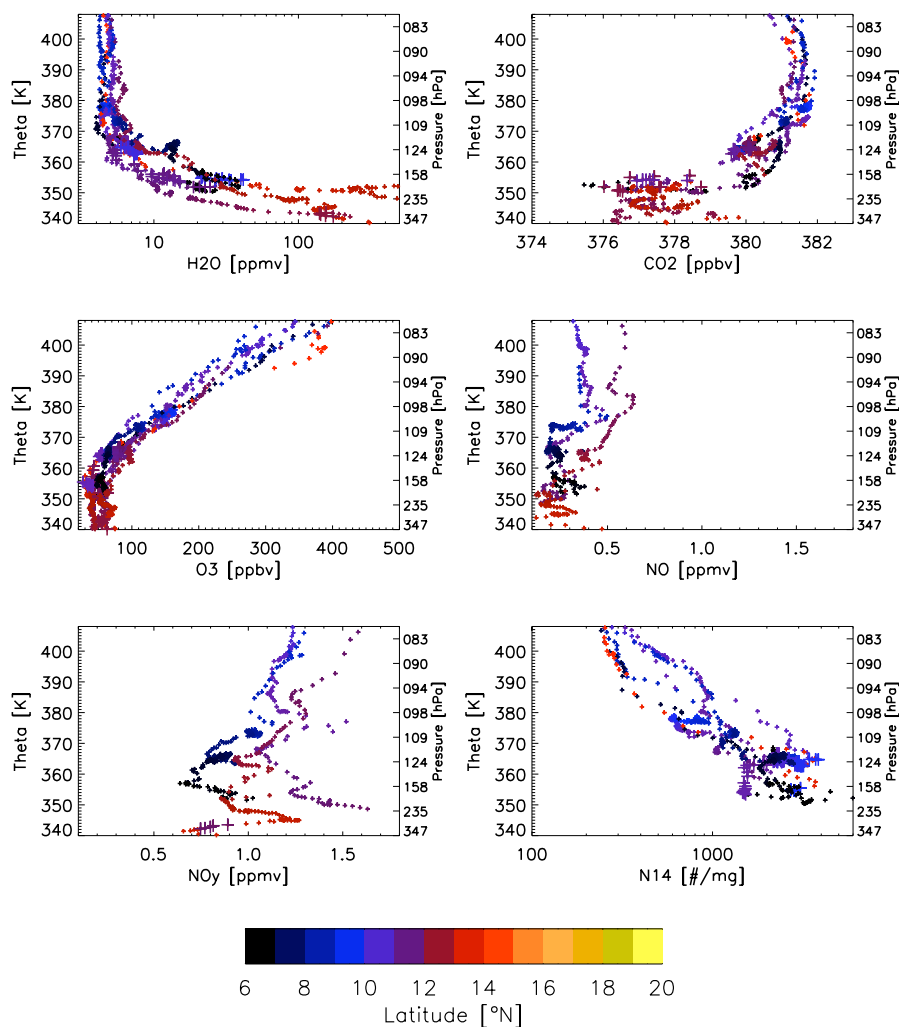
<sup>11</sup>Wuppertal University, Wuppertal, Germany

In the paper “Air mass origins influencing TTL chemical composition over West Africa during 2006 summer monsoon” by K. S. Law et al. (Atmos. Chem. Phys., 10, 10753–10770, doi:10.5194/acp-10-10753-2010, 2010) a problem occurred in the final production process regarding Fig. 10b.

Please find the correct Fig. 10b on the next page.



Correspondence to: K. S. Law  
(kathy.law@latmos.ipsl.fr)



**Fig. 10b** Vertical profiles of trace gas concentrations (volume mixing ratio in ppbv or ppmv as appropriate) and aerosol mass mixing ratio (particles per mg air),  $N_{14}$  (14 nm to  $<1 \mu\text{m}$ ), for “non-convective” M55 flights on 4 and 13 August 2006. Profiles are plotted as a function of theta (K) and coloured by latitude where the measurements were made. Crosses indicate points where back trajectories show uplift from below 800 hPa during 10 days before the flight.