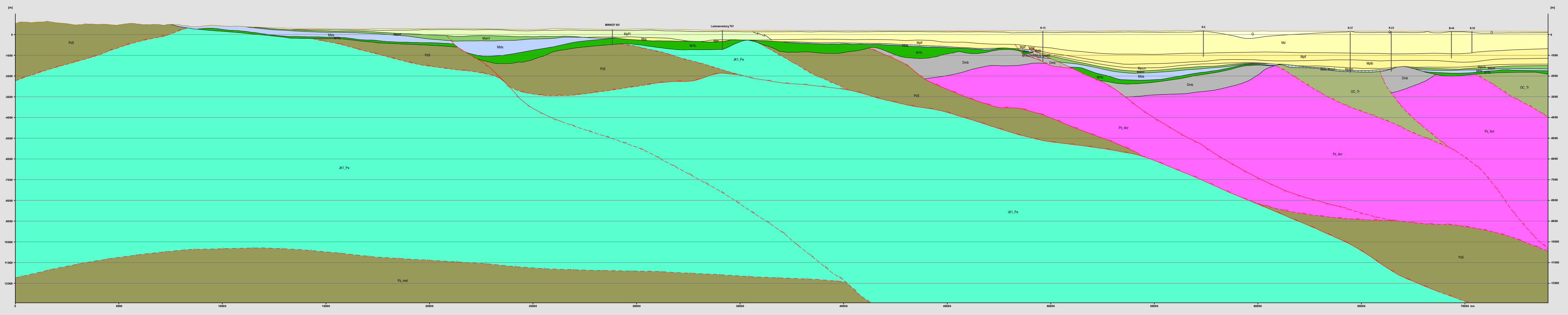


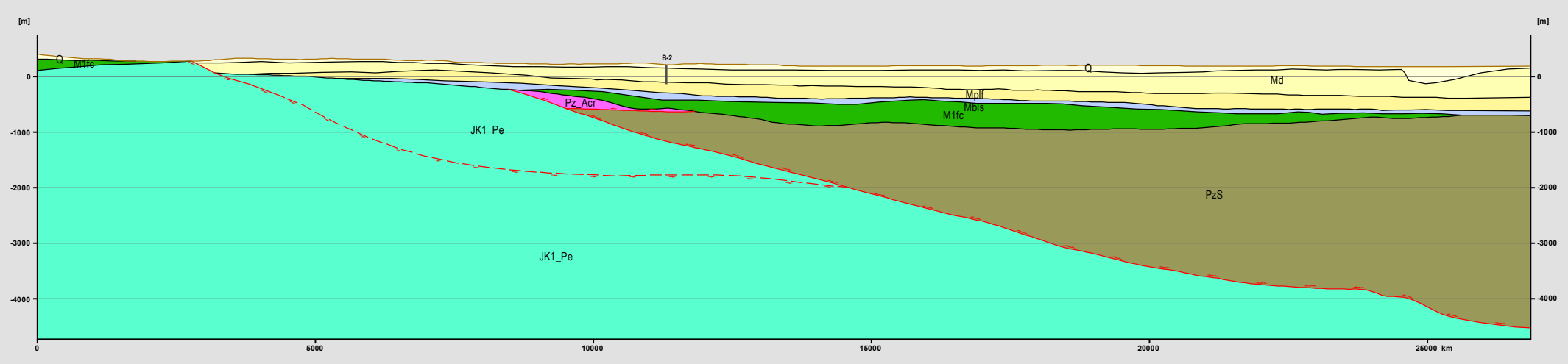
This project is implemented through the CENTRAL EUROPE Programme, co-financed by the ERDF

Scale: 1:100 000  
Vertical exaggretation: 1x

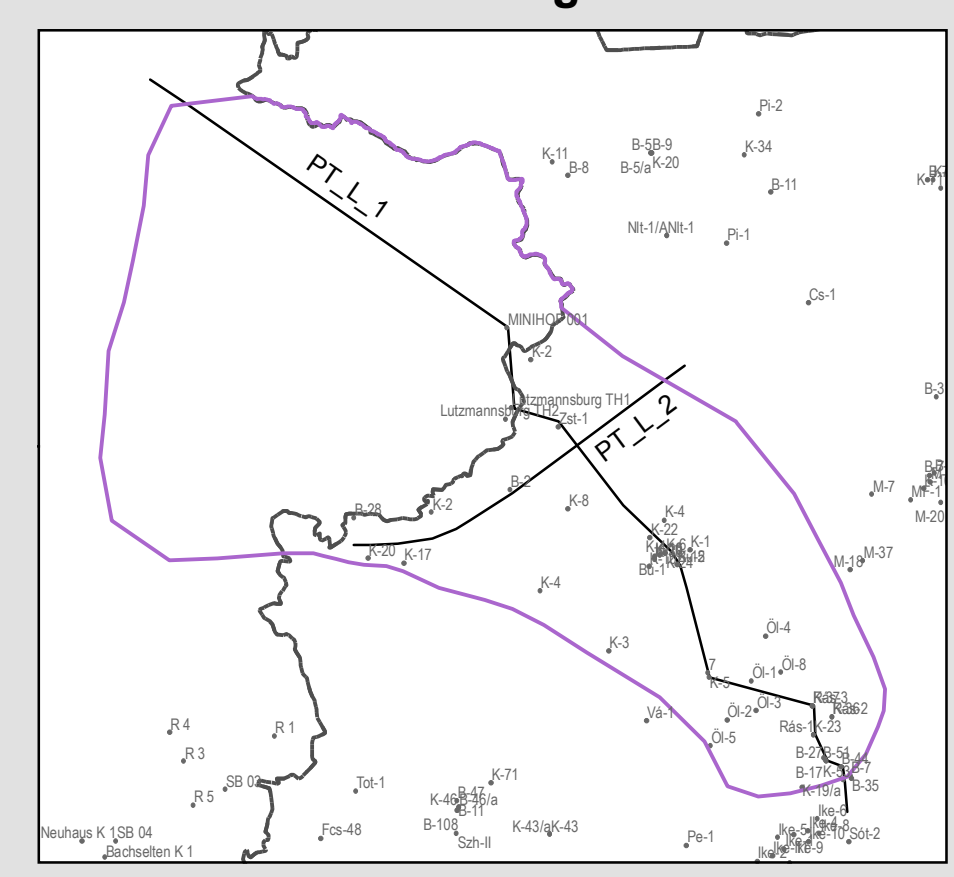
Section PT\_L\_1



Section PT\_L\_1



Cross sections for Lutzmannsburg–Zsira Area



**Legend**

Q	Mb1s	Top surface
MpPI	M1fc	Geological boundary
Md	JK1_Pe	Normal fault
Mplf	Dmb	Inferred normal fault
Mpc	OC_Tr	Reverse and normal fault
Mptb	Pz_Acr	Inferred reverse and normal fault
Mpcm	Pz_met	Hypothetic fault
Msmf	PzS	
Mb1s-Msmf		

Editor: Zsolt Kercsmár, Vera Maigut, Zsuzsanna Vikor  
 Authors of the model horizons:  
 Hungary: Jolán Angyal, Gáspár Albert, Zsolt Kercsmár, Vera Maigut, Gyula Maros, László Orosz, Klára Palotás, Ildikó Selmeczi, András Uhrin;  
 Austria: Bernhard Atzenhofer, Rudolf Berka, Magdalena Bottig, Anna Brüstle, Christine Hörfarter, Gerhard Schubert, Julia Weilbold;  
 2011

0 4 8 12 16 km

This map was produced by ArcGIS Desktop 10 without manual cartographic processing.

