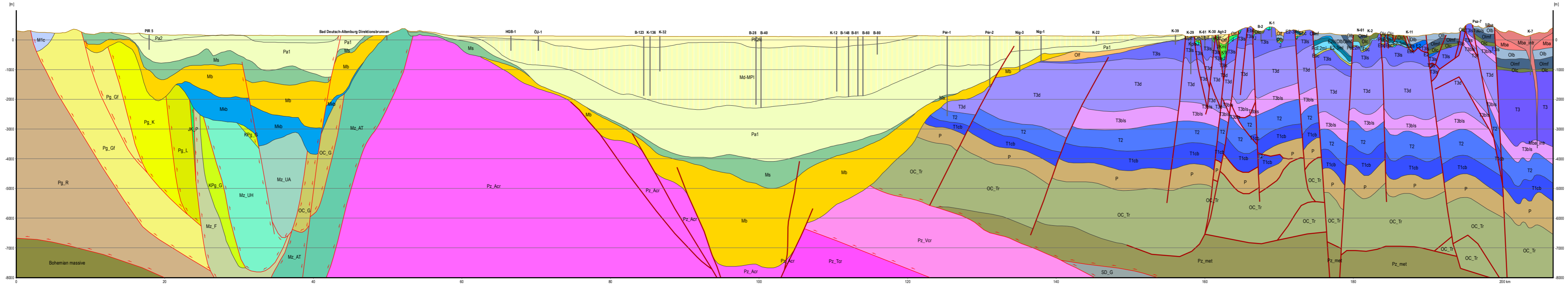


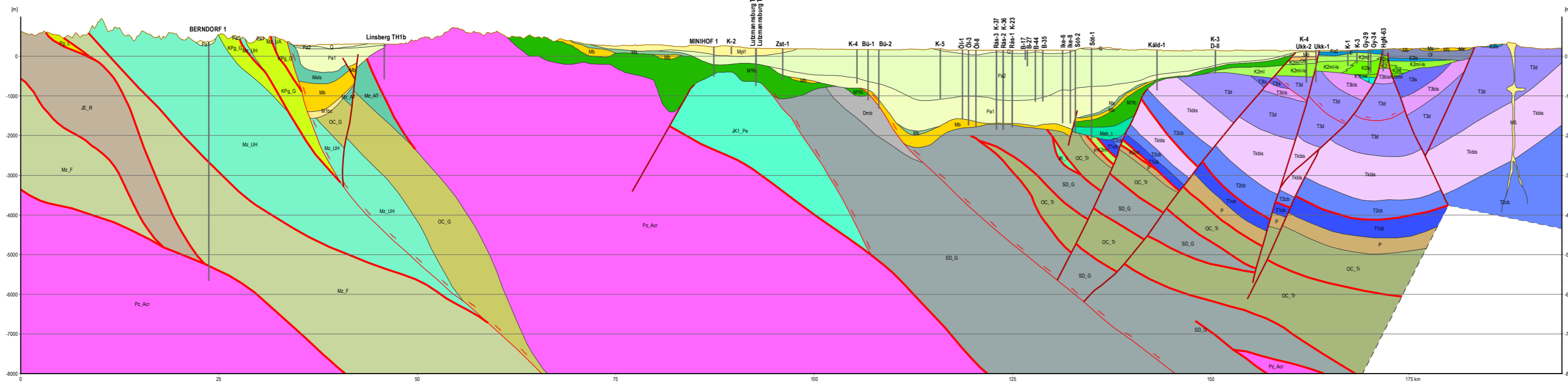
This project is implemented through the CENTRAL EUROPE Programme, co-financed by the ERDF

Scale: 1:500 000
Vertical exaggretation: 10x

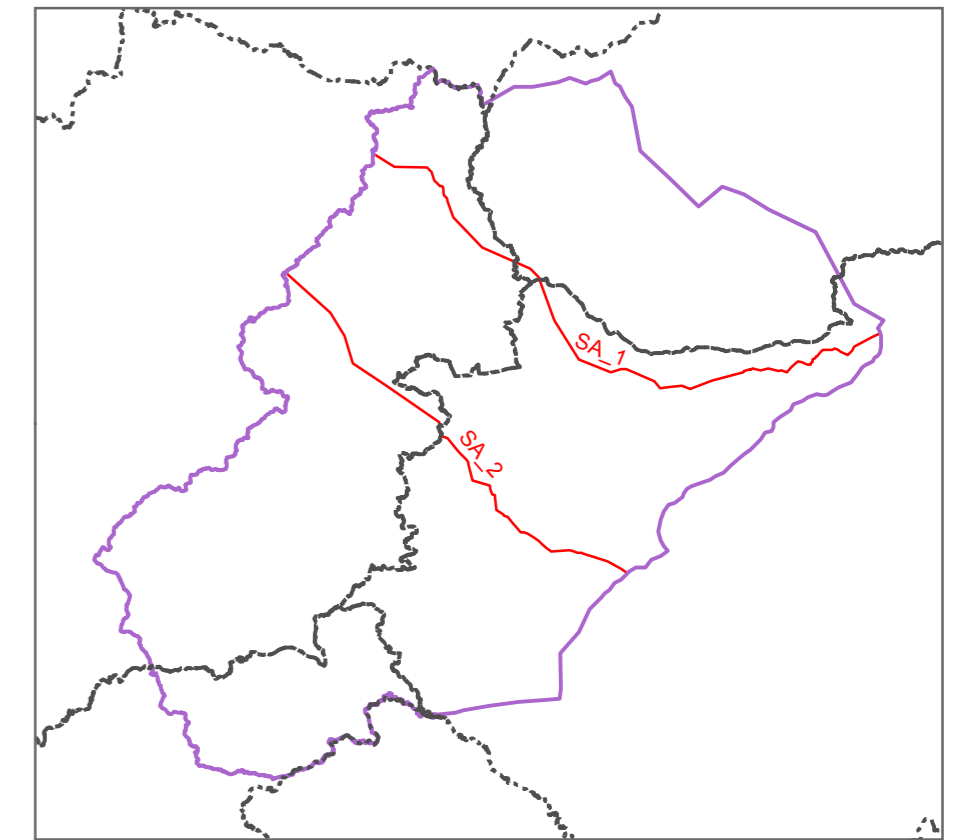
Section SA1



Section SA2



Geological cross sections for Supra-Regional Area



Legend

Q	Msls	Meb_t	Ebc	K2ml	JE_R	T2cb	SD_G	Geological boundary
PIQfc	Ms	Olb	E2	K2ml-ls	JK_P	T2	OC_G	Top surface
Pa2	Mba	Olf	E	K2ls	JK1_Pe	T1cb	OC_Tr	Fault
Mb	Mba_intr	Olmf	PcE2ml	K2t	J	Mz_UA	Pz_Vcr	Fault
Md	Mb	Olc-Olb	Pg_R	Kml	T3ls	Mz_UH	Pz_Tcr	Reverse fault
Mplf	Mkb	Olc	Pg_Gf	Kpls	T3bls	Mz_F	Pz_Acr	Nappe
Mpc	M1c	OI	Pg_K	K1t	T3d	Mz_AT	Pz_met	
Pa1	M1fc	E2-3ml	Pg_L	K1bml	Tkbls	P	Bohemian massive	
Md-MPI	M1bc	E2ls	KPg_G	JK_I	T3	Dmb		

Editor: Gyula Maros, Vera Maigut
 Authors of the model horizons: Hungary: Rita Barczikayné Szeiler, László Fodor, László Gyalog, Zsolt Kercsmár, Árpád Magyarai, Vera Maigut, Gyula Maros, László Orosz, Klára Palotás, Ildikó Selmeczi, András Uhrin, Zsuzsanna Viktor; Austria: Bernhard Atzenhofer, Rudolf Berka, Magdalena Bottig, Anna Brüstle, Christine Hörfarer, Gerhard Schubert, Julia Weibold; Slovakia: Ivan Baráth, Klement Fordinál, Balázs Kronome, Juraj Maglay, Alexander Nagy; Slovenia: Bogomir Jelen, Helena Rifej, Igor Rižnar, Mirka Trajanova.
 2011
 3D model horizons produced by ArcGIS Desktop 10 without manual cartographic processing.