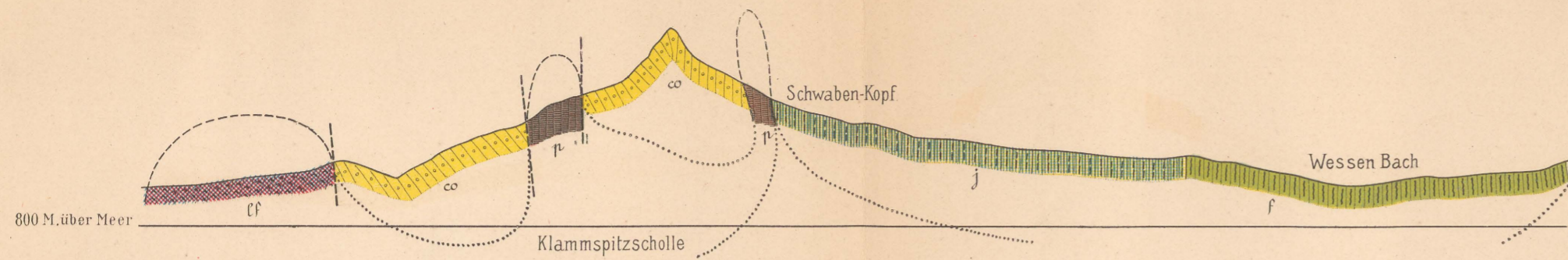


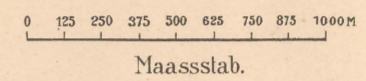
PROFIL-TAFEL

ZUR

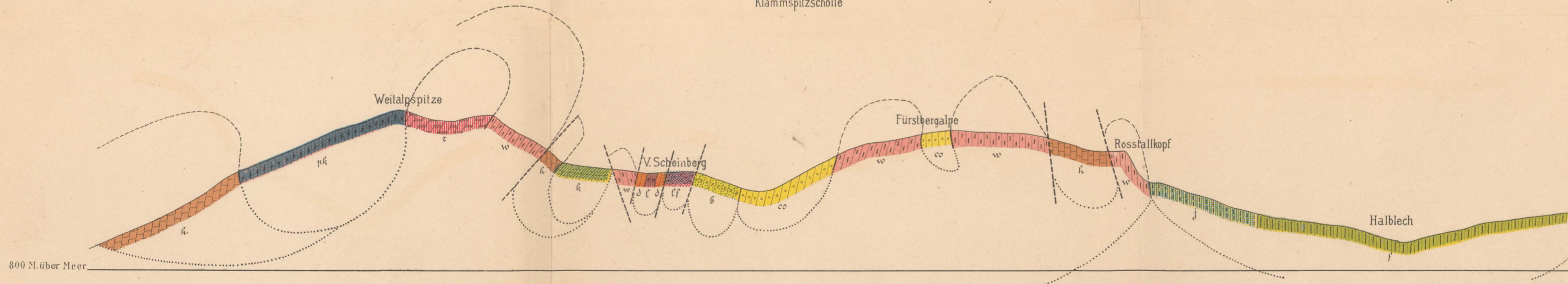
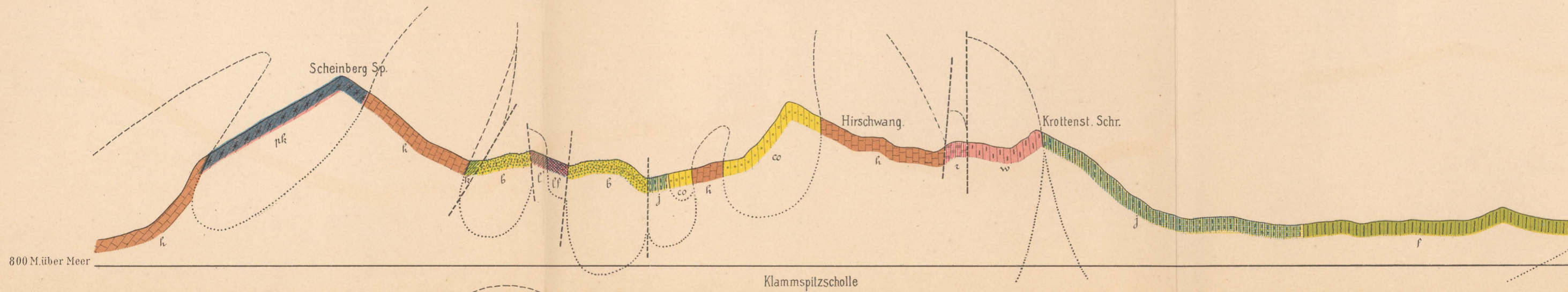
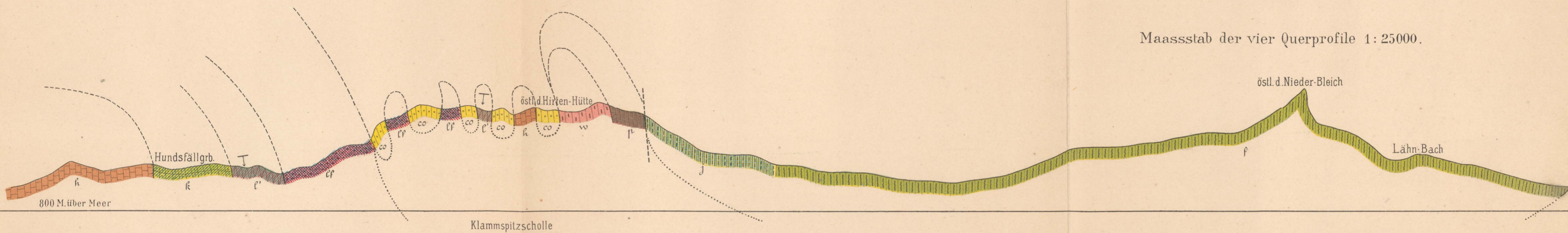
Geologischen Karte des Ammergebirges.



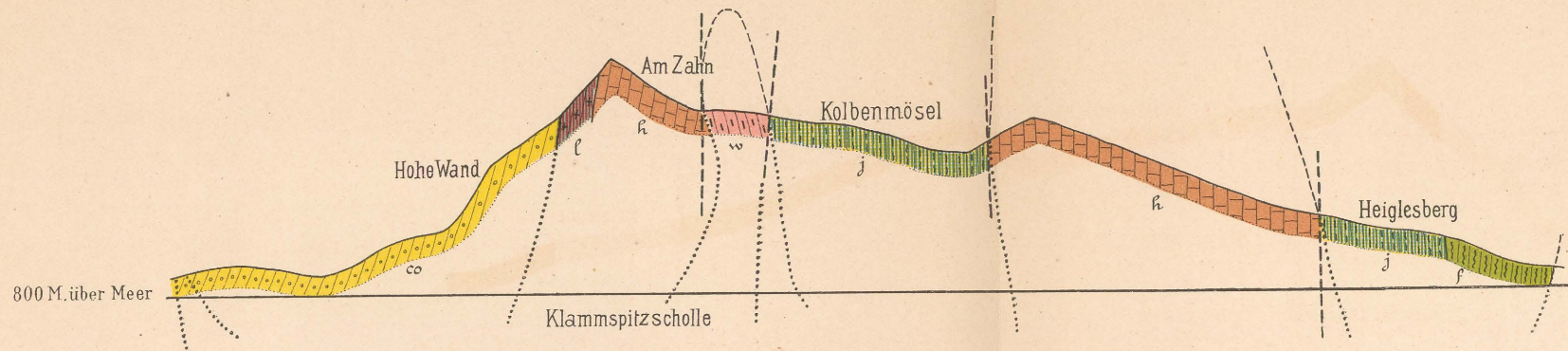
- | | | | |
|----|-------------------------|----|---------------------|
| f | Flysch, | co | Cenoman, |
| j | Aplychen Juruschichten, | b | Dogger, |
| l | Lias Hierlitzkalk, | lf | Lias Fleckenmergel, |
| l' | Lias-Spongenschichten, | d | Dachsteinkalk, |
| k | Kössnerschichten, | pk | Plattenkalk, |
| k' | Hauptdolomit, | r | Raiblerschichten, |
| w | Wettersteinkalk, | p | Partnachsichten, |



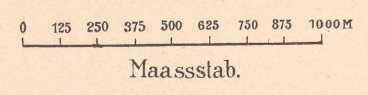
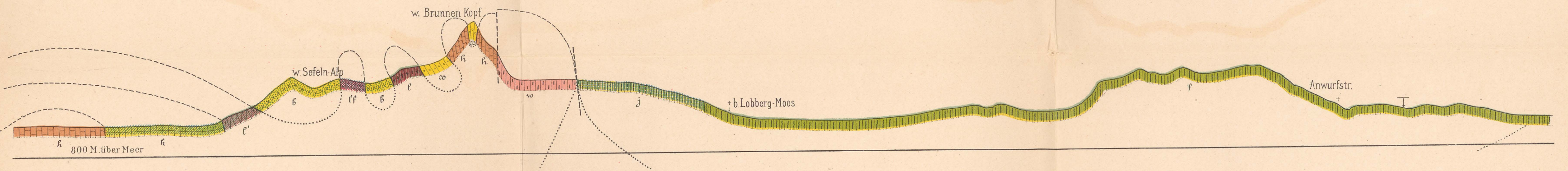
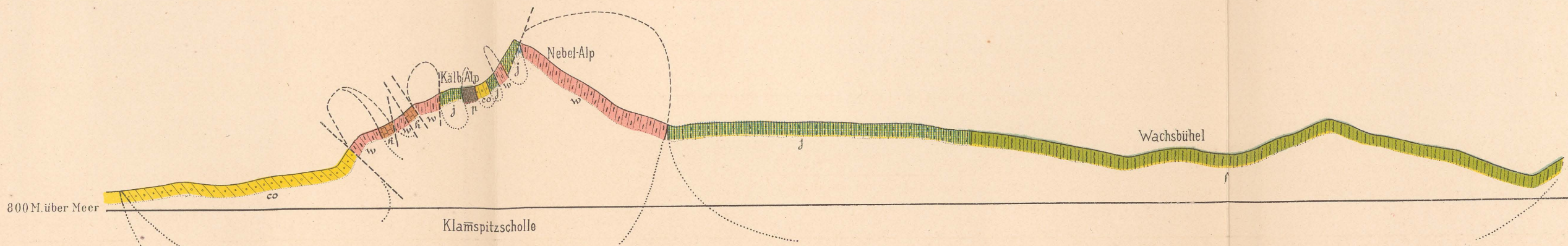
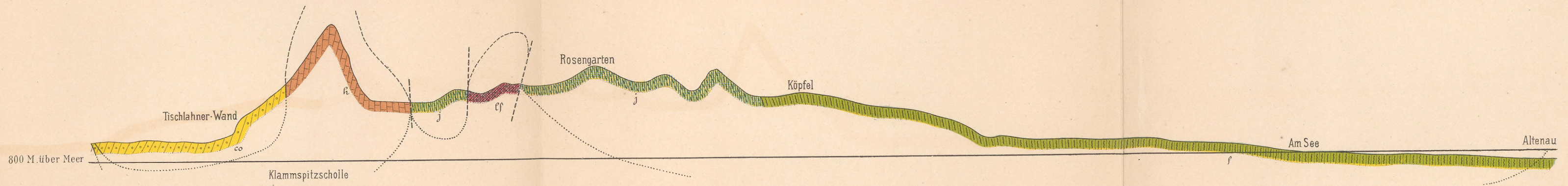
Maassstab der vier Querprofile 1: 25000.



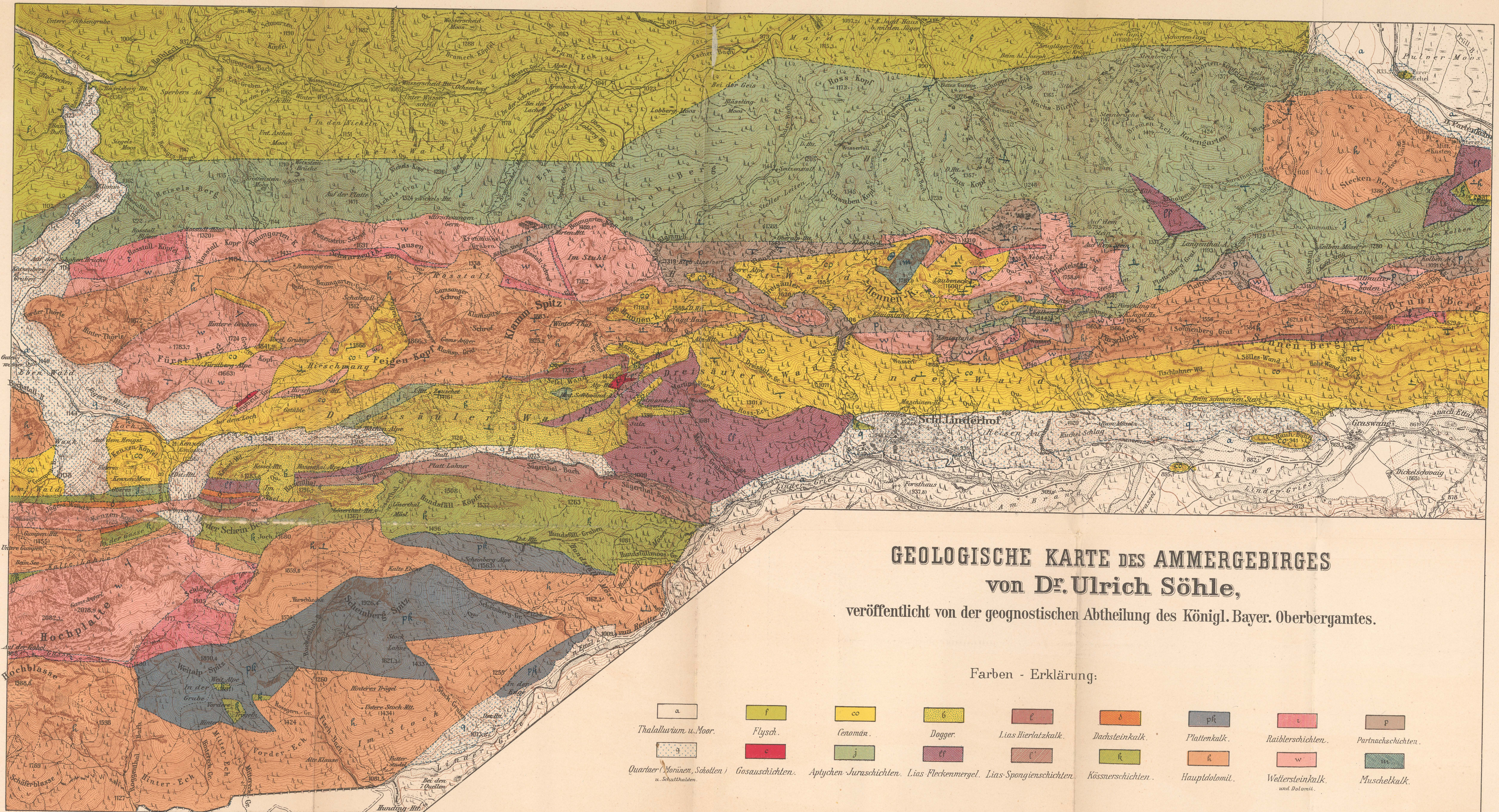
PROFIL-TAFEL zur Geologischen Karte des Ammergebirges.



f	Flysch,	co	Cenoman,
j	Aptychen-Juraschichten,	b	Dogger,
l	Lias-Hierlatzkalk,	lf	Lias-Fleckenmergel,
c	Lias-Spongienschichten,	d	Dachsteinkalk,
k	Kössnerschichten,	pk	Plattenkalk,
h	Hauptdolomit,	r	Raiblerschichten,
w	Wettersteinkalk,	pv	Partnachschichten,



Maassstab der vier Querprofile 1:25000.

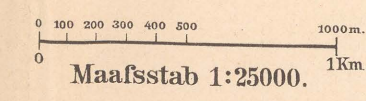


GEOLOGISCHE KARTE DES AMMERGEBIRGES
 von Dr. Ulrich Söhle,
 veröffentlicht von der geognostischen Abtheilung des Königl. Bayer. Oberbergamtes.

Farben - Erklärung:

Thalallurium u. Moor.	Flysch.	Cenoman.	Dogger.	Lias Hieratzkalk.	Dachsteinkalk.	Plattenkalk.	Raiblerschichten.	Partnachsichten.
Quartär (Moränen, Schotlen) u. Schutthalten.	Gasauschichten.	Aptychen-Juraschichten.	Lias Fleckenmergel.	Lias Spongienschichten.	Kössnerschichten.	Hauptdolomit.	Wettersteinkalk und Dolomit.	Muschelkalk.

Lith. u. Druck v. Piloty & Loehle, München.



Schichthöhe der Niveau-Curven 10m.

Aufgenommen vom K. B. topogr. Bureau.