

PALAEONTOGRAPHICA.

BEITRAEGE ZUR NATURGESCHICHTE DER VORWELT.

SUPPLEMENT II.

SIEBENTE ABTHEILUNG.

[*Palaeontologische Mitteilungen aus dem Museum des Kgl. Bayer-
Staates. Band II. Abtheilung 7*].

DIE KORALLEN DER STRAMBERGER SCHICHTEN

VON

M. OGILVIE.

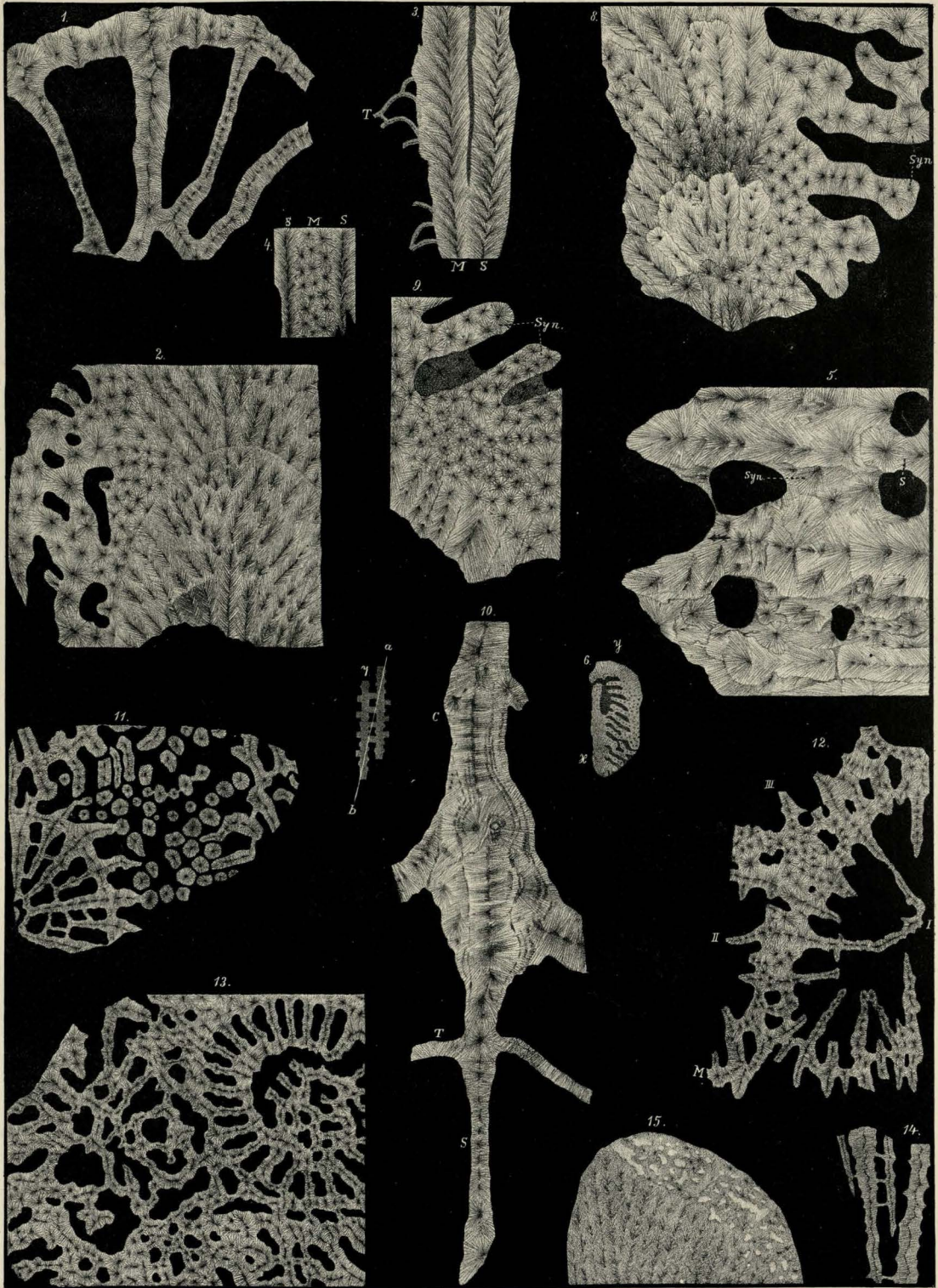
TAFEL VII—XVIII.



STUTT GART.

E. SCHWEIZERBART'SCHE VERLAGSHANDLUNG (E. KOCH)

1897.



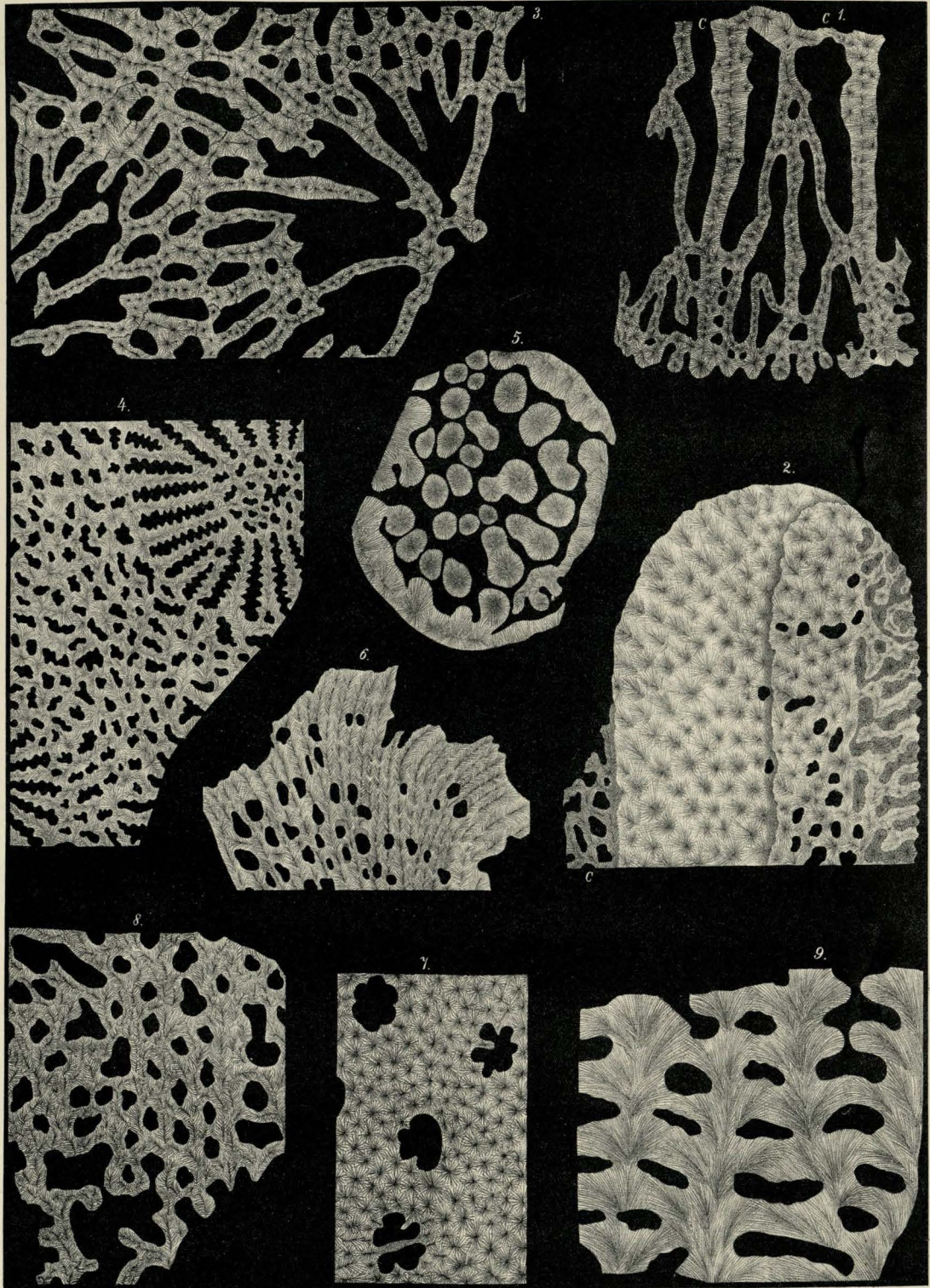
A. Birkenmeier gez. u. lith.

Druck v. Carl Leykam in München.

- 1-4. *Galaxea*.
- 5-9. *Fungia*.
- 10-11. *Heliastraea*.

- 12. *Coniastrea*.
- 13. *Turbinaria*.
- 14. *Montlivaltia norica*, Frech.

- 15. *Montlivaltia rudis*, E. & H.



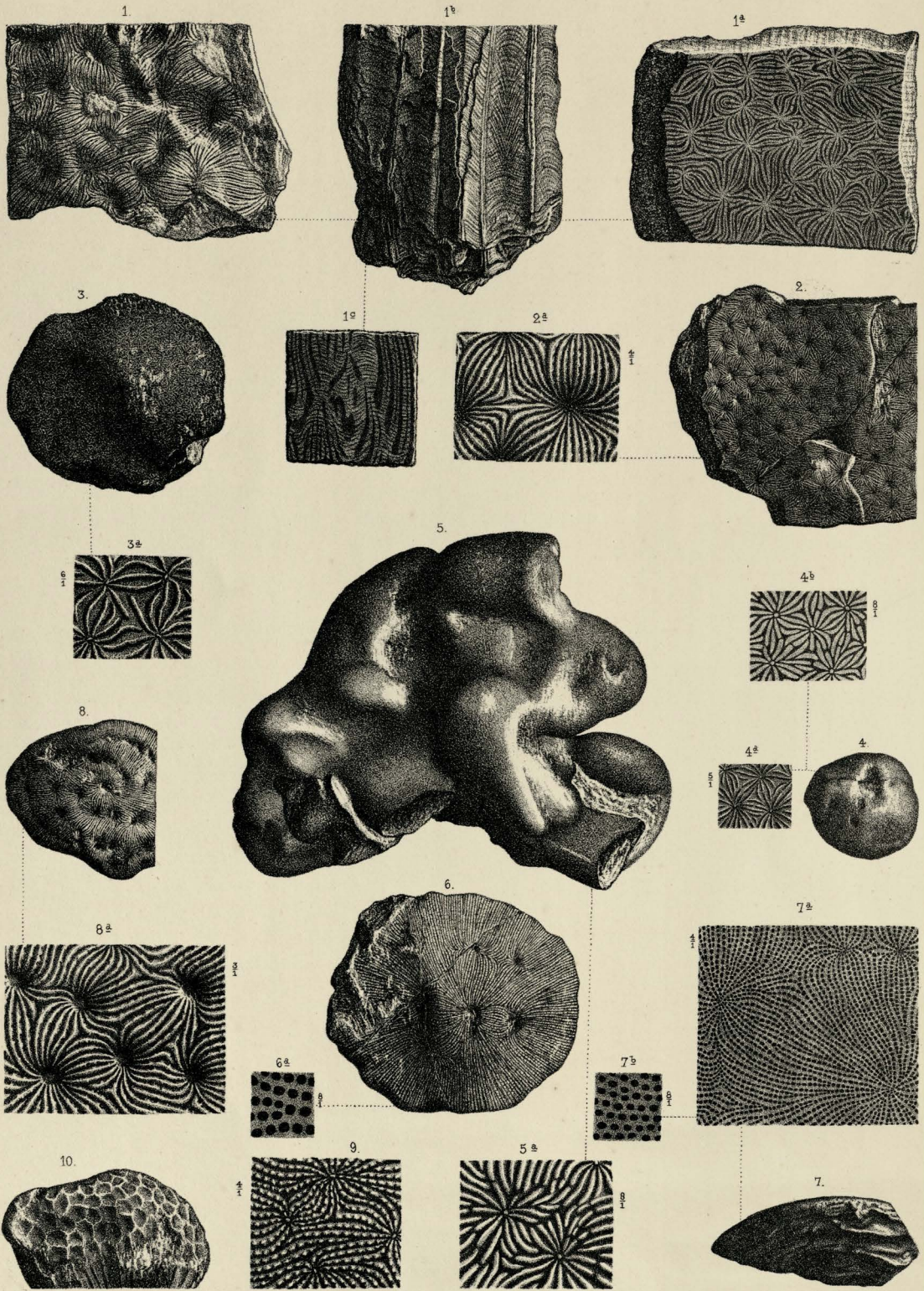
A Birkenmaier gez. u lith.

Druck v. Carl Leykam in München.

1 2. *Eupsammia trochiformis*, E. & H.
3. *Siderastraea*.
4. *Actinacis elegans*, Reuss.

5. *Stylophyllum polyacanthum*, Reuss.
6 7. *Madrepora*.
8. *Porites*.

9. *Heptastylis*.

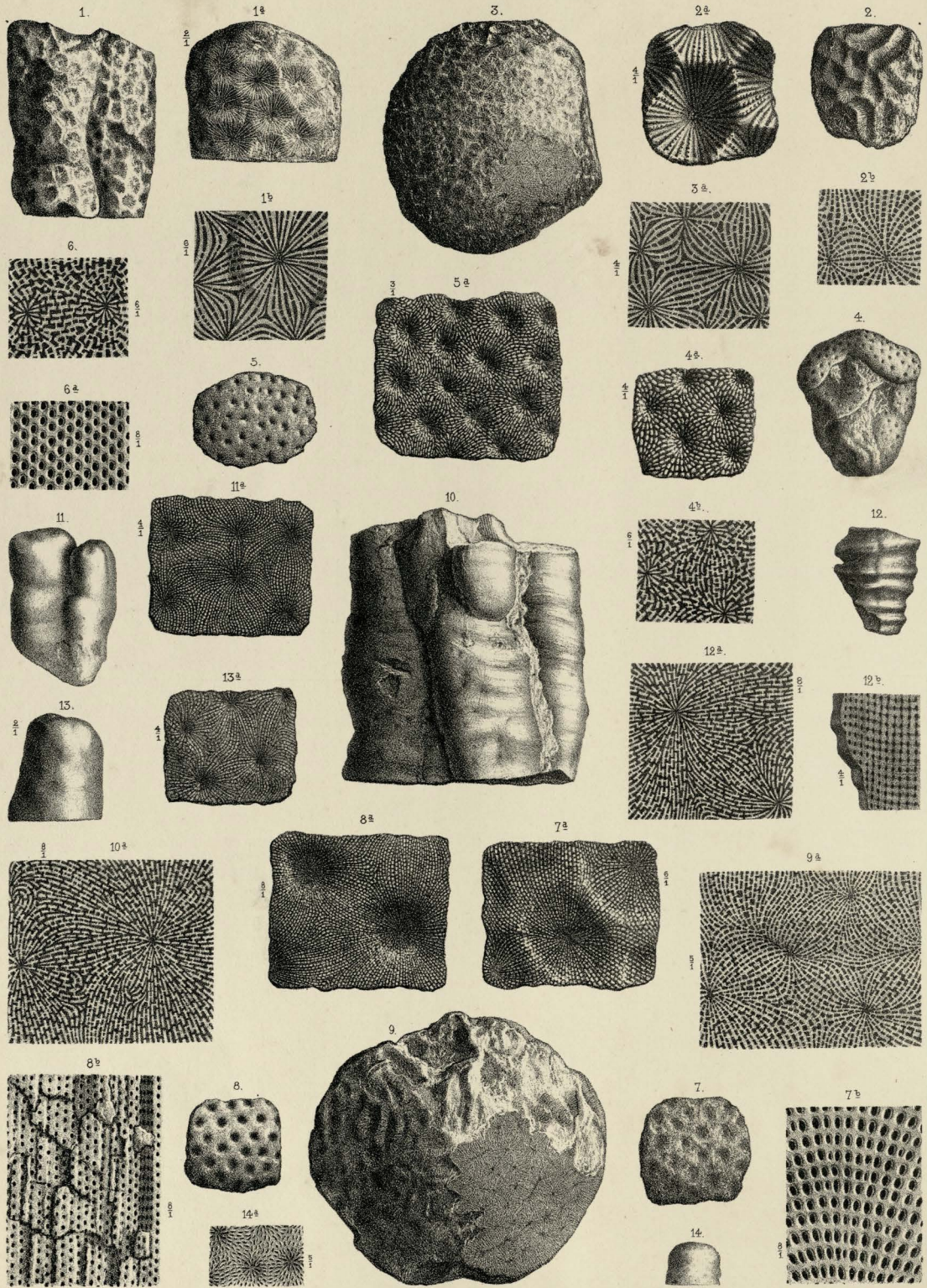


A. Birkenmeier gez. u. lith.

Druck v. Carl Leykam in München.

1. *Thamnastraea confluens* Quenst.
2. *T. _____ oculata* Koby.
3. *T. _____ gibbosa* Becker.
4. *T. _____ globosa* Ogilvie.
5. *T. _____ aspera* Ogilvie.

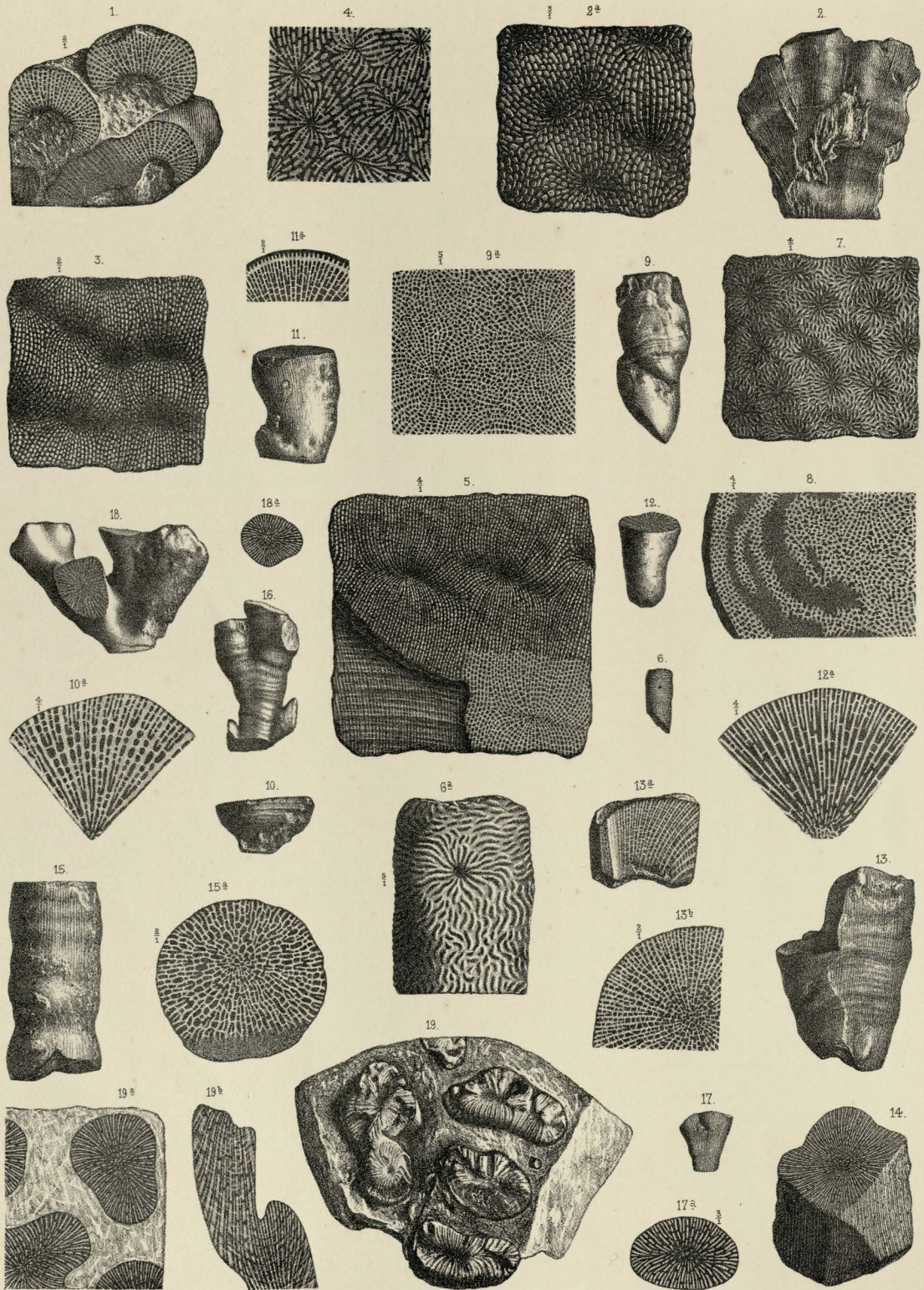
6. *Dimorphastraea heteromorpha* Quenst.
7. *D. _____ conica* Koby.
8. *D. _____ dubia* From.
9. *D. _____ vasiformis* Koby.
10. *Thamnoseria Montispastelli* d'Ach.



A. Birmaier gez. u. lith.

Druck v. Carl Leykam in München.

- | | |
|---|--|
| 1. <i>Thamnozeris Amadei</i> Et. | 8. <i>Microsolena variata</i> Ogilvie. |
| 2. <i>T.</i> _____ <i>Perroni</i> From. | 9. <i>Comoseris brevivalis</i> Ogilvie. |
| 3. <i>T.</i> _____ <i>Strambergensis</i> Ogilvie. | 10. <i>Polyphyllaseris corticata</i> Ogilvie. |
| 4. <i>Microsolena tuberosa</i> Mich. | 11. <i>P.</i> _____ <i>tenuiseptata</i> Ogilvie. |
| 5, 6. <i>M.</i> _____ <i>stellata</i> Ogilvie. | 12. <i>P.</i> _____ <i>fascicularis</i> Ogilvie. |
| 7. <i>M.</i> _____ <i>agariciformis</i> Et. | 13. <i>P.</i> _____ <i>ramosa</i> Ogilvie. |
| 14. <i>Thamnaruca pulchella</i> Ogilvie. | |



A. Eiskämmer gen. u. lith.

Druck v. Carl Leykam in München.

- | | |
|--|---|
| <p>1. <i>Protoseris recurvata</i> Ogilvie
 2. <i>P.</i> _____ <i>robusta</i> Becker
 3. <i>Dimorpharaca</i> <i>Kocchlini</i> Haimé.
 4. <i>Macandraraca</i> <i>tuberosa</i> Et.
 5. <i>M.</i> _____ <i>laminata</i> Ogilvie!
 6. <i>Thamnaraca</i> <i>arborescens</i> Et.
 7, 8. <i>Microsolena</i> <i>exigua</i> Koby.
 9. <i>Polyphylloseris</i> <i>corticata</i> Ogilvie!</p> | <p>10. <i>Leptophyllia</i> <i>Thurmanni</i> Koby.
 11. <i>Epistreptophyllum</i> <i>Montis</i> From. sp.
 12. <i>E.</i> _____ <i>conicum</i> Ogilvie!
 13, 14. <i>E.</i> _____ <i>commune</i> M. Lasch.
 15. <i>Haplaraca</i> <i>columnaris</i> Ogilvie.
 16. <i>Diplaraca</i> <i>aff. rugosa</i> Koby.
 17. <i>D.</i> _____ <i>simplex</i> Koby.
 18. <i>D.</i> _____ <i>subcrassa</i> Koby.
 19. <i>Diplaraca</i> <i>aff. nobilis</i> Ogilvie!</p> |
|--|---|

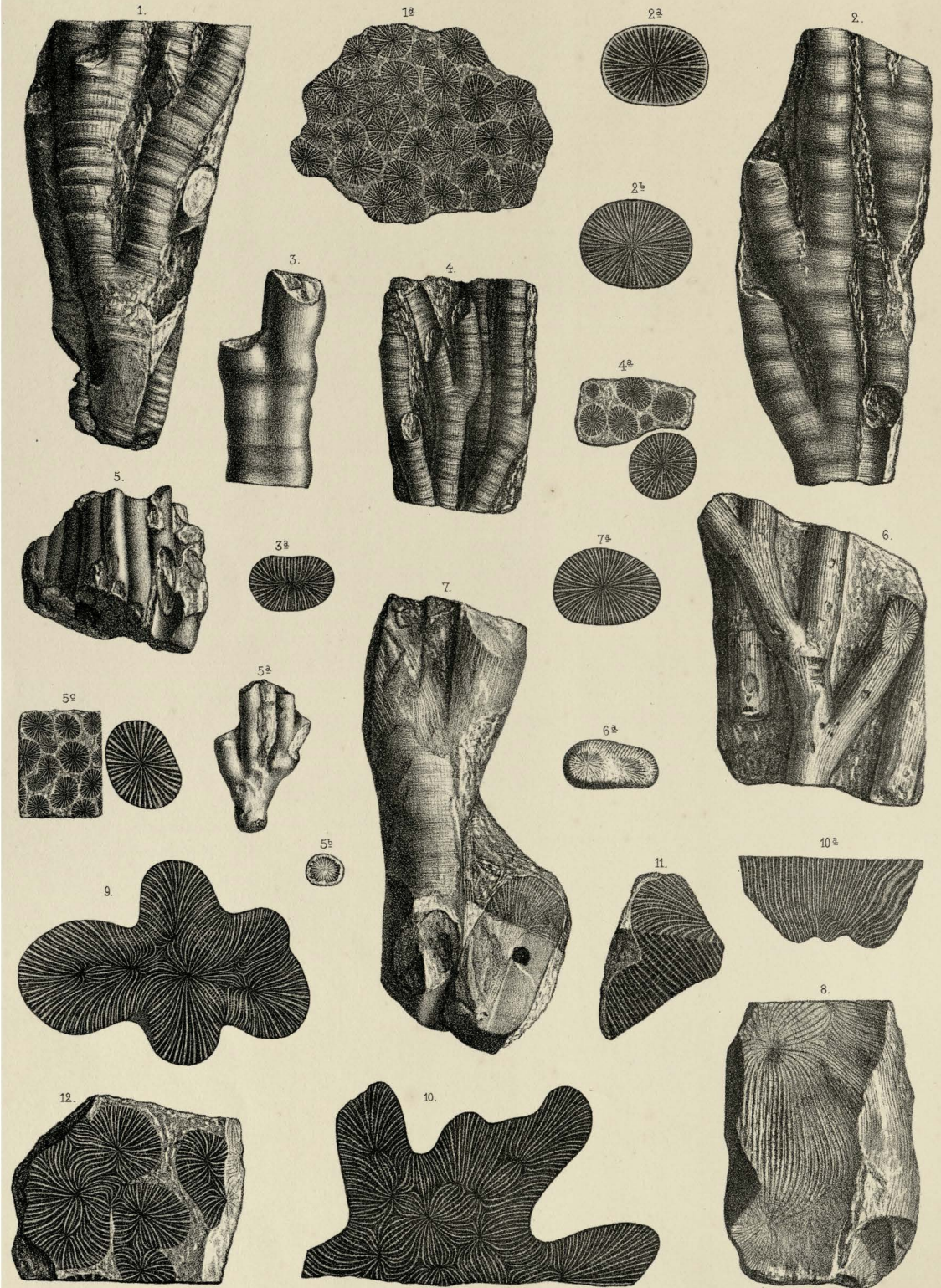


A. Eirkmaier gez. u. lith.

Druck v. Carl Leykam in München.

1. *Aulastraea conferta* Ogilvie.
2. *Montlivallia Renevieri* Kobay.
3. *M. _____ Cavali d'Ach.*
4. *M. _____ obconica* Mstr.
5. *M. _____ alata* Ogilvie.
- 6, 10, 11. *Pleurosmilia cylindrica* From.

7. *Epismilia obesa* Kobay.
8. *Pleurosmilia aff. infundibuliformis* Mich.
- 9, 13, 15. *P. _____ crassa* Mitasch.
12. *P. _____ Marcou* Et.
14. *Opisthophyllum vesiculare* Ogilvie.
16. *Thecosmilia truncata* Ogilvie.

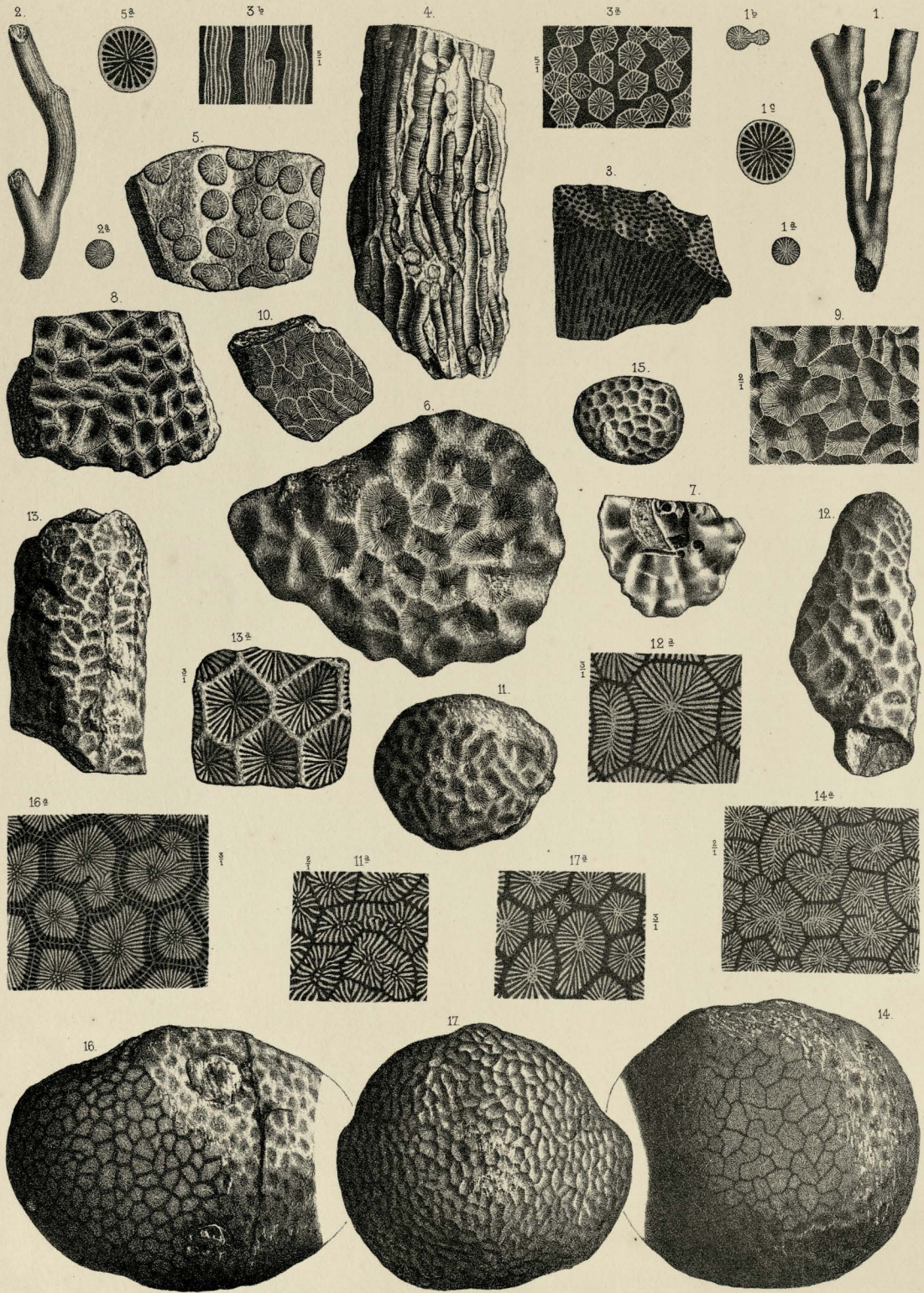


A. Bräuner gezeichnet.

Druck v. Carl Leykam in München.

- 1. *Thecosmilia koniakensis* Ogilvie
- 2, 3. *T. _____ longimana* Quenst.
- 4. *T. _____ virgulina* Et.
- 5. *T. _____ flabella* Blainv.

- 6. *Thecosmilia irregularis* Et.
- 7, 8. *T. _____ Volzi* Ogilvie.
- 9, 10, 11. *T. _____ suevica* Quenst.
- 12. *T. _____ moravensis* Ogilvie.

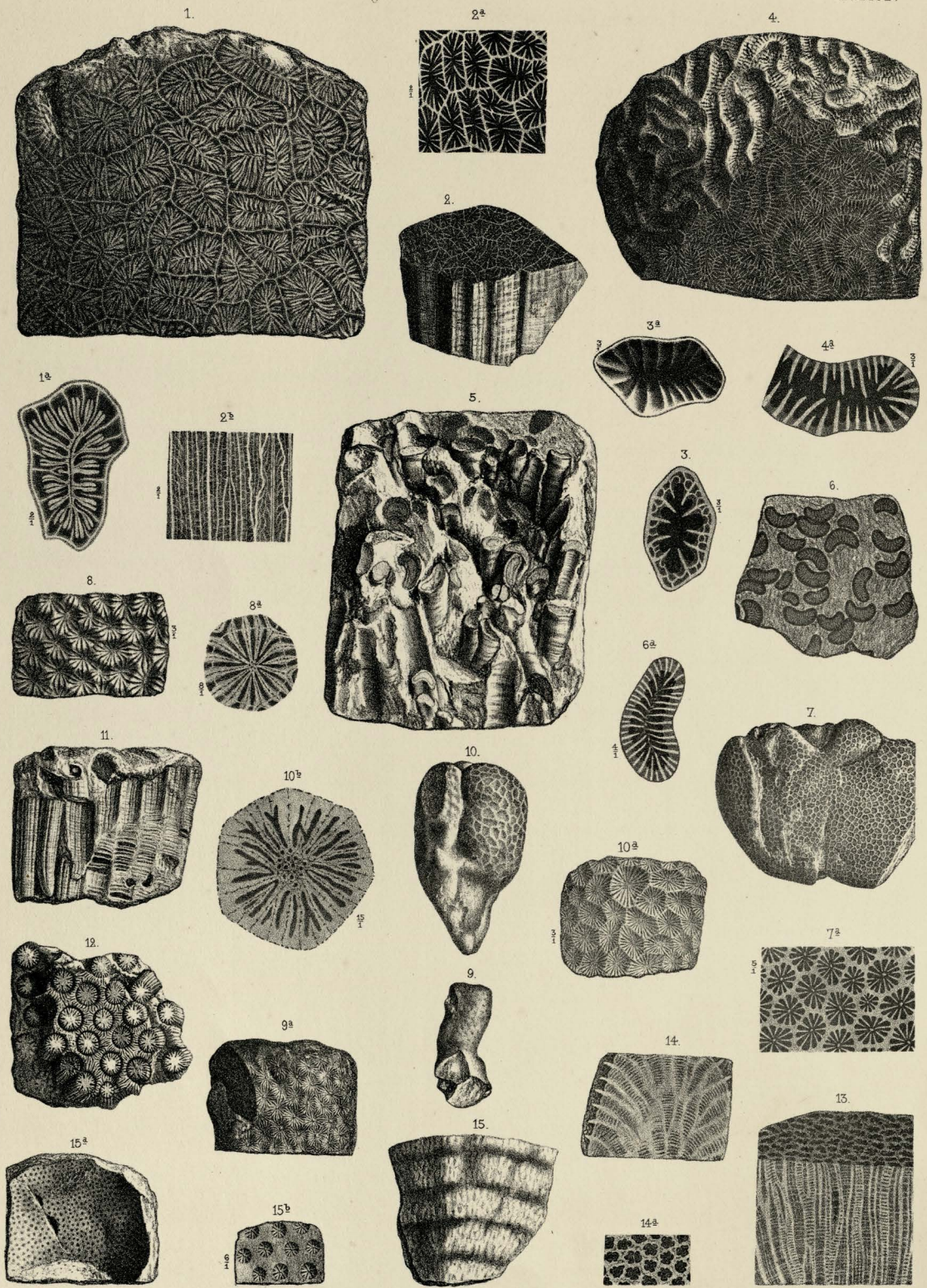


A. Firkmater *gov. a. lith.*

Druck v. Carl Leykam in Mählen.

1. *Rhabdophyllia disputabilis* Becker
2. *R. _____ cervina* Et
3. *Stylosmilia Koviakensis* Ogilvie.
- 4, 5. *S. _____ rugosa* Becker
- 6, 7. *Isastraea Goldfussi* Kobay.

- 8, 10, 14, 15. *Isastraea undans* Et.
- 9, 16. *J. _____ variabilis* Et.
11. *J. _____ Tharmanni* Et.
- 12, 13. *J. _____ cylindrica* Ogilvie.
17. *J. _____ Gourdani* From.

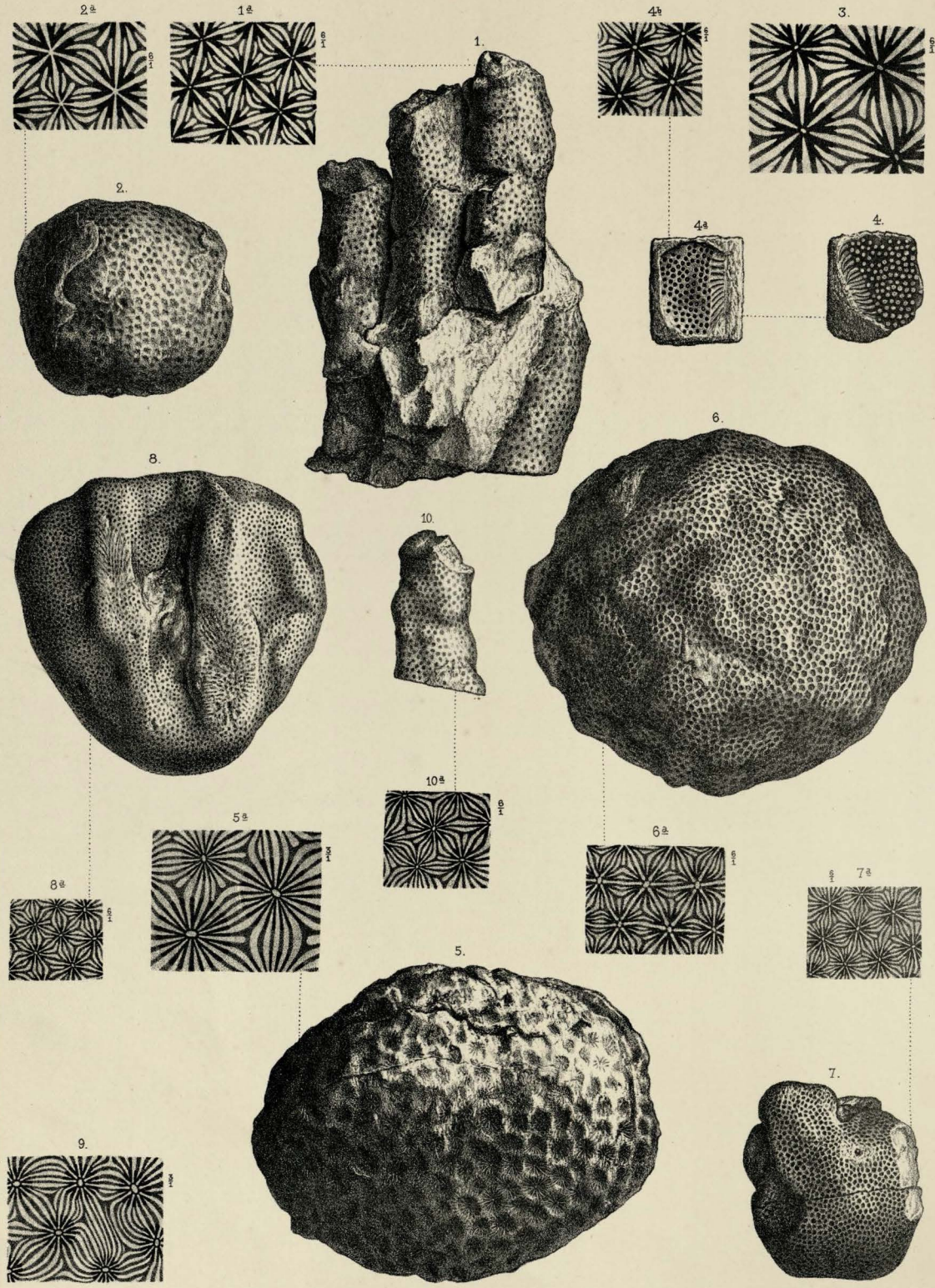


A. Birckmayer gez. u. lith.

Druck v. Carl Leykam in München.

1. *Acanthogyra multiformis* Ogilvie.
2. *A. columnaris* Ogilvie.
- 3, 4. *Dendrogyra sinuosa* Ogilvie.
- 5, 6. *Selenogyra Geiki* Ogilvie.
7. *Astrocoenia Bernensis* Koby.
8. *A. crassoramosa* Mich.

9. *Astrocoenia Delemontana* Koby.
10. *Stephanocoenia savulus* Thurm.
- 11, 12. *Cyathophora Claudiensis* Ét.
13. *C. lithonica* Ogilvie.
14. *C. globosa* Ogilvie.
15. *Stylina foliosa* Ogilvie.

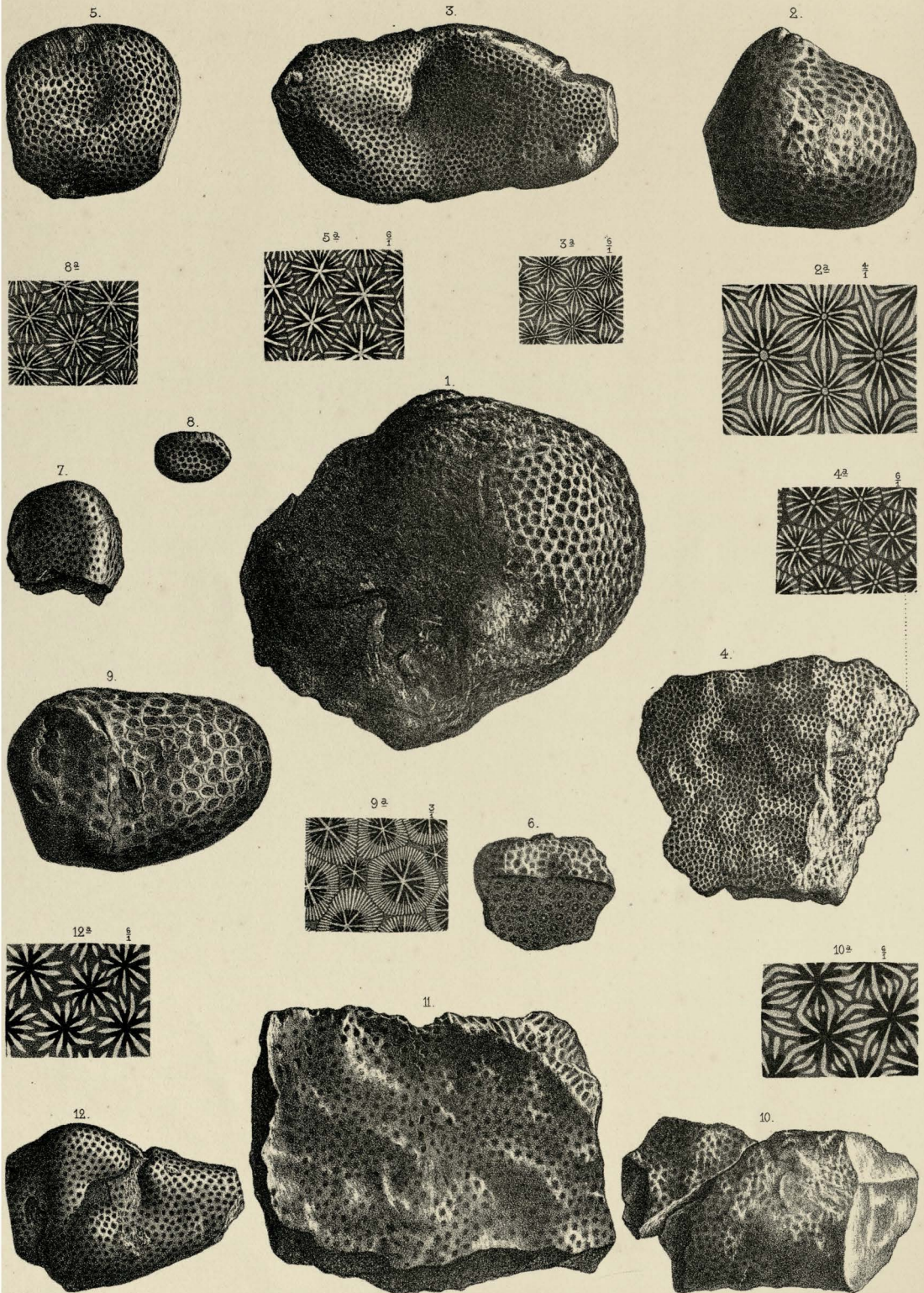


A. Birkenmeier gez. u. lith.

Druck v. Carl Leykam in München.

1. *Stylina arborca* d'Ach.
2. *S.* _____ *granulosa* From.
3. *S.* _____ *Waldeckensis* Ét.
4. *S.* _____ *Kotzebensis* Ogilvie.
5. *S.* _____ *sulcata* From.

6. *Stylina tuberosa* Ogilvie.
7. *S.* _____ *parvipora* Ogilvie.
8. *S.* _____ *milleporacea* Ogilvie.
9. *S.* _____ *tubulifera* Phill.
10. *Heliocoenia dendroidea* Ét.



A. Ehrharter gez. u. lith.

Druck v. Carl Leykam in München.

- 1, 2. *Stylina brevicosta* Ogilvie
- 3. *Heliocoenia Humberti* Et.
- 4. *Stylina anthemoides* Menegh.
- 5. *Diplocoenia clathrata* Et.
- 6. *D. _____ spissa* Becker

- 7, 8. *Diplocoenia Inwaldensis* Ogilvie.
- 9. *D. _____ multiseptata* Ogilvie.
- 10. *Cryptocoenia Thiesingi* Koby.
- 11. *Conocastrea sexradiata* Vof.
- 12. *C. _____ minima* Et.