

**EXPLANATORY NOTES TO THE MAP:  
METAMORPHIC STRUCTURE OF THE ALPS  
WESTERN AND LIGURIAN ALPS**

by

**Bruno Goffé<sup>1</sup>, Stephane Schwartz<sup>2</sup>, Jean Marc Lardeaux<sup>3</sup> & Romain Bousquet<sup>4</sup>**

<sup>1</sup>Laboratoire de Géologie

UMR 8538, CNRS, Ecole Normale Supérieure, 24 rue Lhomond, 75005 Paris, France

<sup>2</sup>Université Joseph Fourier Maison des Géosciences

Lirigm BP 53, 38041 Grenoble, CEDEX 9, France

<sup>3</sup>Géosciences Azur- Faculté des Sciences

Parc Valrose 06108 Nice cédex 02, France

<sup>4</sup>GeoSciences Department

University of Basel, Bernoullistr. 30, CH-4056 Basel, Switzerland

## **1 - Generalities and choice for the representation**

In the Western and Southwestern part of the Alps from Val d'Aoste in the North to Genova in the South, the Alpine Type Metamorphism, characterized by a high-pressure low-temperature regime (HP-LT), is particularly well expressed.

In this area, the retromorphic conditions influencing the rocks during their exhumation paths have never exceeded the temperatures attained at peak pressure. As a result, during decompression of the metamorphic rocks the PT-t trajectories always remained cooling paths. Therefore, our choice was to represent the metamorphic peak conditions, while the retromorphic evolutions are only indicated together with ages in the inset map and not on the main map. However, these retromorphic imprints exist and can be locally intense.

## **2 - The main metamorphic zones**

In the area of the Western Alps the HP-LT conditions range from the very low-grade greenschist facies to the Ultra High Pressure (UHP) conditions crossing 8 of the 14 metamorphic facies encountered in the whole map.

Generally the contacts between the metamorphic units correspond to tectonic contacts (thrusts, normal faults, strike-slip faults). However, on the map, the boundaries between the metamorphic units frequently appear as crossing the tectonic contacts mainly when they correspond to the limits of paleogeographic domains.

Detailed examination of these contacts shows that this feature is the result of the late tectonic evolution bringing into contact units of equal metamorphic grade but different ages. Two main examples of this feature can be found in the blueschist and in the eclogite facies zones that overlap both oceanic (Schistes Lustrés nappe) and continental (Briançonnais and internal basements) domains: the high pressure metamorphic conditions prevailing in the Briançonnais domain and in the internal basements are Late Tertiary in age (Oligocene) while in the oceanic domain these conditions are Early Tertiary in age (early Eocene) (DUCHENE et al, 1987; AGARD et al. 2002).

Despite the simplistic choice of the metamorphic criteria, only oriented on the metamorphic peak conditions and thus related to early orogenic processes (subduction), the metamorphic imprint at the map scale is consistent with the geometry of the Western alpine arc, i.e. the PT metamorphic conditions increase from the external to the internal part of the arc with an inward movement of the subducting slab. However, more complex situations resulting from the initial structure of the European or Apulian margins or resulting of the late tectonic of the belt can be depicted. Two main examples of this situation are particularly interesting to be mentioned (see also the general cross section of the Western Alps shown in Figure 1):

- 1) The repetition of the metamorphic sequence (greenschist-blueschist-eclogite facies) observed in the Northwestern part of the Alps from the external to internal basements through the Valaisan, the Briançonnais and the Ligurian domains. This can be related to the prolongation of the southern realm of the Valaisan oceanic domain;
- 2) The decrease of the metamorphic grade in the deepest part of the belt, i.e. the easternmost side of the Dora Maira internal basement, with a reappearance of HT blueschists facies conditions in the Pinerolo unit below the overlying eclogitic units. This metamorphic structure can be interpreted as the result of the late tectonic evolution of the orogenic wedge.

The nature of some boundaries of the metamorphic facies is still not totally determined. Some boundaries run along isograds as for the appearance of the very low-grade metamorphism in the external part of the belt or as for the external limit of the HP greenschist facies in the Briançonnais domain, North-West of Briançon. Some could be undefined tectonic contacts as for the Blueschist - Upper Blueschist facies limits in the Schistes Lustrés nappe in the Cottian Alps, East and South-East of Briançon.

The HP-LT metamorphic conditions occur in all rocktypes encountered in the belt including continental basements, oceanic crust and an exceptional variety of metasediments. Generally, the PT conditions recorded by the different rocktypes are consistent. Only in two specific areas of the Schistes Lustrés domain, West of the Gran Paradiso and West of the Monviso, the metamorphic imprint of mafic blocks or slices contrasts with the surrounding pelitic lithologies. This is represented, on the map, by coloured dots superposed on the main metamorphic facies. These features suggest the possible existence of a melange of high grade metamorphic blocks in a matrix of lower metamorphic degree.

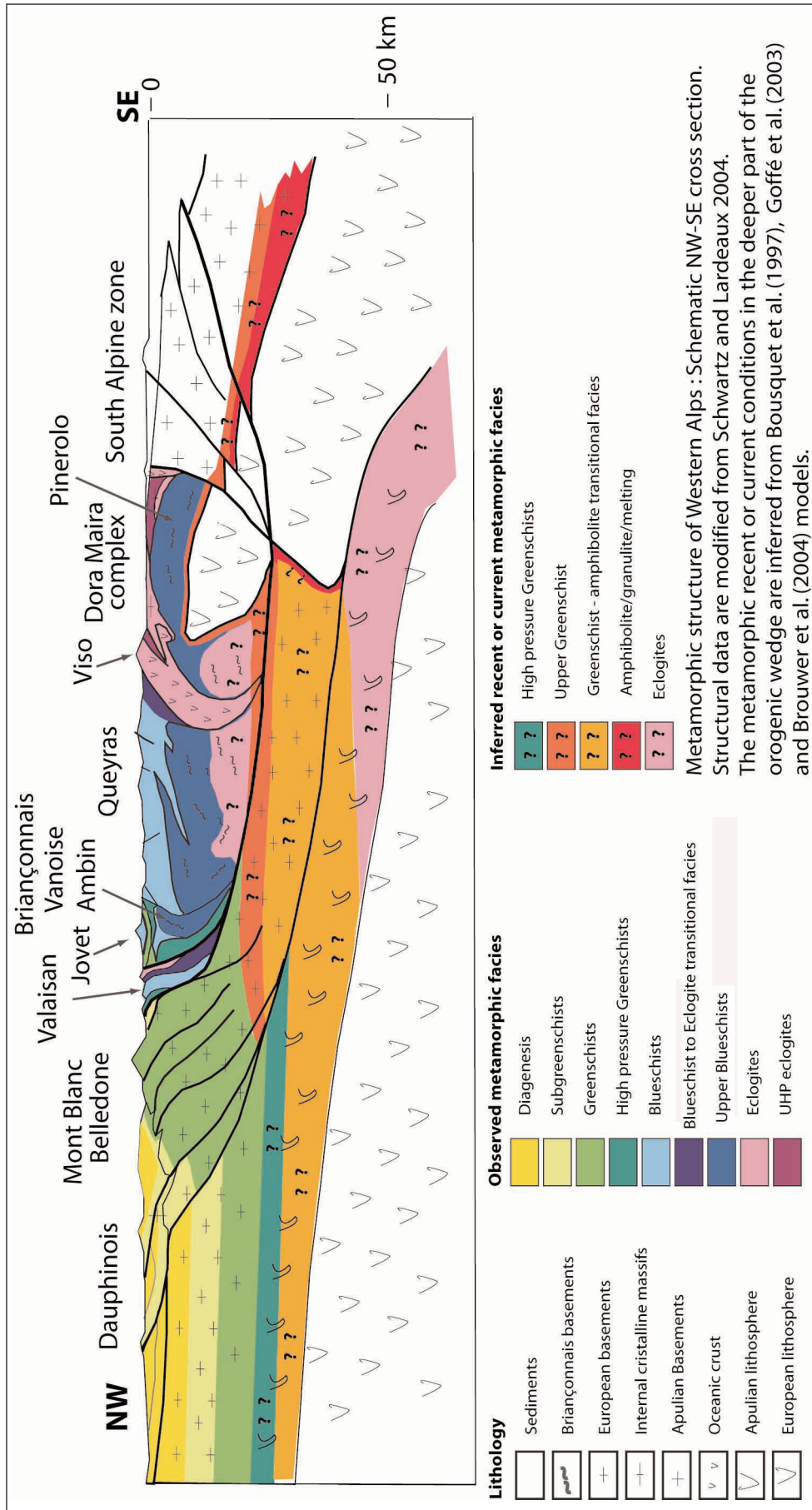


Figure 1

Schematic projected NW-SE cross section of the Western Alps showing the metamorphic structure. The upper part of the cross section is drawn using surface metamorphic data as drawn in the map. The deeper part of the cross section is hypothetically inferred from numerical modelling and data coming from Central Alps, considering this area as a possible further evolution for Western Alps. A moderated thermal imprint is also considered as a possible current deep metamorphic structure resulting from a slab breakoff event as modelled by BROUWER et al. (2004). This metamorphic thermal imprint around the mantle indenter could thus be compared to those observed around the peridotitic bodies of Beni Bousera and Ronda in the Rif and Betic Chain.

### 3 - The metamorphic facies in the Western Alps

The metamorphic facies used here are mainly based on B. EVANS (1990) metamorphic grid defined for metabasites. In the case of the Western and South-Western Alps, these facies definitions actually cover a large variety of other index minerals depending of the nature of the protoliths, particularly, the metasediments. In the following, the specific index minerals found in the belt are listed and discussed for each metamorphic facies in function of the lithology. In each facies the minerals regarded as defining the metamorphic index mineral assemblages are printed in bold, while additional index minerals, locally present, are added in italic. Localities where a specific mineralogy can be found are indicated in brackets.

For organic matter, only the appearance of graphite is considered to enhance the absence of diamond in the HP conditions. In the other case the organic matter is considered as disordered carbonaceous matter.

- **Sub greenschist facies (200–300°C; P < 4kbar)**  
Mafic system: albite – chlorite – pumpellyite (Chenaillet)  
Volcanoclastic metasediments: **laumontite – prehnite** (Champsaur)  
Pelitic system: **kaolinite – chlorite – illite - interlayered illite-smectite**,  
*Rectorite (Nappe de Digne)*  
Metabauxites (Prealpes, Devreouse): **diaspore – kaolinite – berthierite**
- **Lower greenschist facies (300–400°C; P < 4kbar)**  
Mafic system and Volcanoclastic metasediments: **albite – chlorite – epidote – actinolite**  
Na rich metapelites: **albite – chlorite – phengite**  
Al rich metapelites: **pyrophyllite – chlorite – illite-phengite – paragonite - cookeite**  
*(Ultra-Dauphinois unit, La Grave and la Mure area) – chloritoid (Northern part of Ultra-Dauphinois North of the Maurienne valley) – paragonite*
- **Upper greenschist facies (300–400°C; 4 < P < 8kbar)**  
Mafic system and Volcanoclastic metasediments: **albite – lawsonite – chlorite – paragonite – phengites – riebeckite-crossite – pumpellyite – stilpnomelane**  
Pelitic system: **phengite – chlorite – chloritoid (Northern Vanoise, Ligurian Alps)**
- **Blueschist facies (300–400°C; 8 < P < 15kbar)**  
Mafic system: **glaucophane – lawsonite – jadeite-quartz – pumpellyite**  
Marble and calcschists: **aragonite - glaucophane**  
Evaporites (Maurienne Valley near Bramans): **jadeite + quartz – anhydrite – selaitite – sulfur**  
Pelitic system: **ferro- magnesiocarpholite –phengite – chloritoid – pyrophyllite – lawsonite – aragonite – cookeite – paragonite**  
Na rich metapelites: jadeite + quartz – glaucophane – chlorite – *paragonite*  
Al rich metapelites and metabauxites: **ferro- magnesiocarpholite – pyrophyllite – diaspore – chloritoid – lawsonite – aragonite – cookeite – paragonite – sudoite**  
*(Antoroto metabauxite, Liguria) – gahnite – euclase (Western Vanoise)*

- **Upper Blueschist facies (400–500°C; 10 < P < 15kbar)**  
Mafic system: glaucophane – epidote – garnet or omphacite (+ jadeite)-sphene  
Granitic System: phengite – jadeite- epidote (Southern Vanoise, Ambin, Acceglio)  
Pelitic system: chloritoid – glaucophane – phengite – graphite (Southern Vanoise, Ambin massif)
- **Blueschist to eclogite transitional facies (400–480°C; 15 < P < 20kbar)**  
Mafic system: glaucophane – epidote (+ garnet) – omphacite (+ jadeite)-sphene  
Pelitic system: Mg rich chloritoid – phengite – magnesiocarpholite – garnet – graphite
- **Eclogite facies (500–600°C; 13 < P < 25kbar)**  
Mafic system: garnet – omphacite – quartz – zoisite – phengite- rutile  
Granitic system: garnet-jadeite-phengite- zoisite-rutile (Sesia-Lanzo zone)  
Pelitic system: chloritoid – kyanite – phengite – garnet – glaucophane – paragonite-graphite (Sesia-Lanzo zone)
- **Ultra high-pressure facies (600–800°C; 25 < P < 40kbar)**  
Mafic system: garnet – omphacite – zoisite – coesite – kyanite – Mg-chloritoid – talc (Mon Viso)  
Pelitic system: Magnesiochloritoid – kyanite – phengite – pyrope – talc – coesite – Magnesiostauroilite – ellenbergerite– bearthite – magnesiodumortierite – graphite (Dora Maira massif)

#### 4 - Diversity of Alpine high-pressure mineralogy: an overview

The diversity of the Alpine metamorphic high-pressure assemblages reflects the contrasted bulk-rock chemistries of the metamorphosed protoliths. Hereafter, we present a review of the metamorphic assemblages recognized in different chemical systems.

##### a) Metasediments

Compared to the earlier published metamorphic maps FREY et al. (1999), and beside the different choice of the metamorphic representation, the main new data of this present map is the large and continuous expression of the high-pressure and low temperature metamorphic conditions in the metasediments as shown in Figure 2 and 3.

This new data mainly results from the consideration of the ferro- and magnesiocarpholite occurrences in the metapelites. The magnesiocarpholite first discovered in the metabauxites of Western Vanoise (GOFFÉ et al., 1973, GOFFÉ & SALIOT 1977) is now known in all the high-pressure metasedimentary lithologies having initially a low Na content (i.e. bauxite, aluminous pelites, common pelites, sandstones, conglomerates). They occur abundantly in the Briançonnais domain in Western and Southern Vanoise, Cottian and Ligurian Alps, both in the Paleozoic series (Stephanian and Permian schists and metaconglomerates) and in the Mesozoic cover (Triassic series, Dogger metabauxites, Eocene flysch).

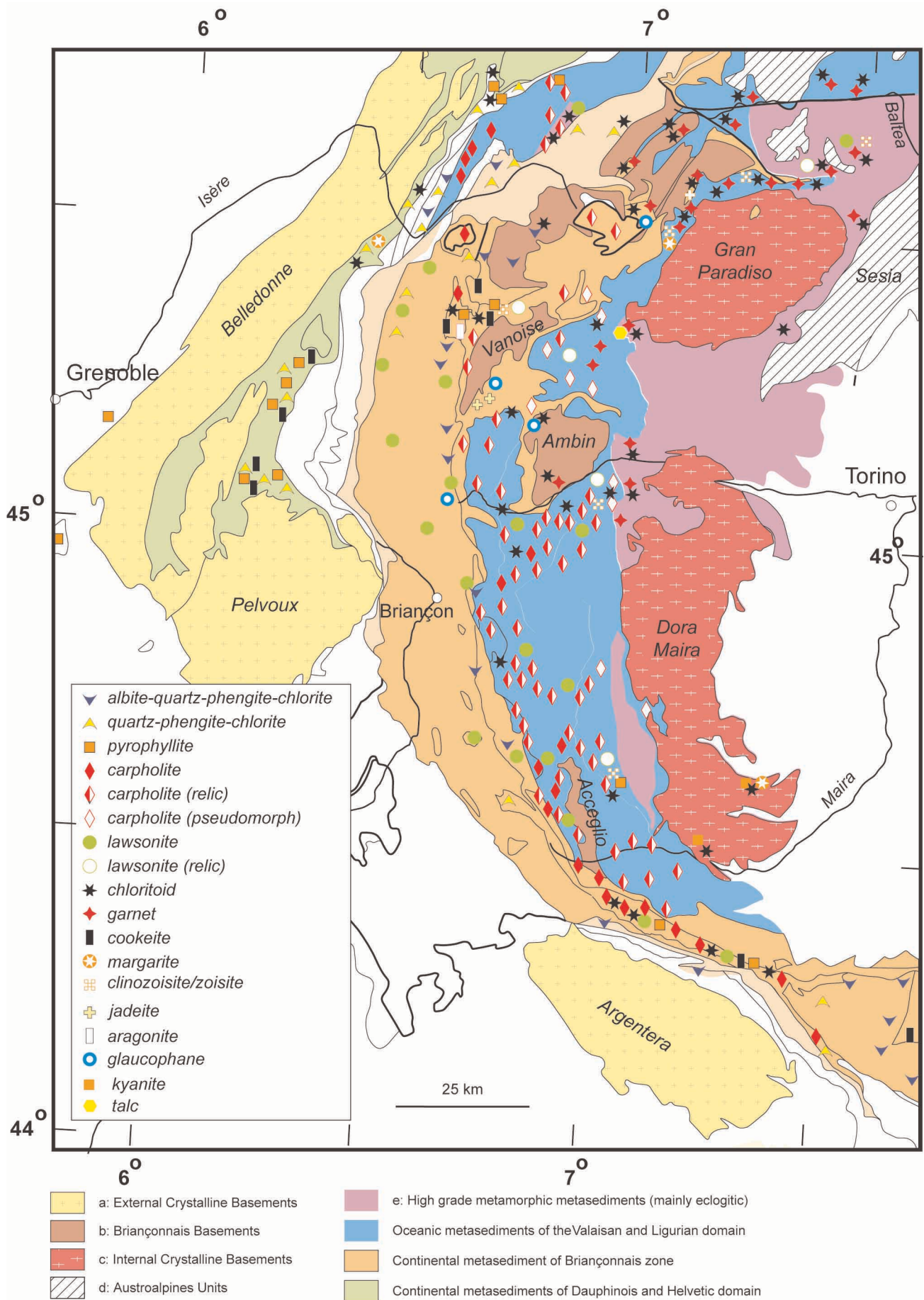


Figure 2

*Occurrences of metamorphic index mineral observed in Alpine metasediments of the Greenschist and Blueschist metamorphic zones of Western Alps used to draw the metamorphic map.*

*White: Sediments or very low grade metasediments.*

They occurs also widely in blueschists facies metapelites of the Tethys oceanic domain in the Valaisan realm (Versoyen and Brêches de Tarentaise units) and in the Ligurian zone from the more external klippe of Mont Jovet (AGARD, 2001, pers. com.) to the more internal one in the Sestri-Voltaggio-Cravasco unit. Its stability domain in blueschists metamorphic facies and its progressive replacement during the prograde and retrograde metamorphic evolution by chloritoid, chlorite, phengite and generally numerous minerals of the KMASH reduced system can be used to describe and to quantify continuously the metamorphic evolution (GOFFÉ, 1982; CHOPIN 1983; GOFFÉ & CHOPIN 1986; VIDAL et al., 1992; GOFFÉ et al., 1997; JOLIVET et al. 1998; VIDAL & PARRA 2000; PARRA et al., 2002; AGARD et al., 2001; among others). In the Western Alps, ferro- and magnesiocarpholite ranges from 80% of the Fe end member to 85% of the Mg one. In the Briançonnais domain, Fe-Mg-carpholites are commonly associated to pyrophyllite and record pressures between 8 to 12 kbar for temperatures ranging from 330°C to 400°C. In the Schistes Lustrés domain, the Fe-Mg-carpholites are never associated to pyrophyllite and shown equilibrium with phengites through the reaction: Chlorite + muscovite + quartz  $\Leftrightarrow$  phengite + Fe-Mg-carpholite. The reported maximum pressures for this reaction are around 15-18 kbar for temperatures reaching 480°C (GOFFÉ et al., 1997; AGARD et al. 2001). These conditions are those of the upper blueschists facies reported on the map in the inner part of the Schistes Lustrés domain and the Valaisan, at the external limit of the eclogite domain.

Lawsonite occurrences are also very common in metapelites and calcschists of the Schistes Lustrés units (CARON & SALIOT, 1969; SICARD et al., 1986) and in meta-sandstones of the Briançonnais domain. Lawsonite is often associated to Fe-Mg-carpholite in continental and oceanic metasediments. Its distribution is wider than that of Fe-Mg-carpholite with occurrences in upper greenschist and eclogite facies units, where Fe-Mg carpholite is not stable and was never found. This widest distribution is in accordance with a largest stability field toward both low pressure and high temperature conditions.

Cookeite (lithium chlorite) is also an important metamorphic index mineral in the Briançonnais (Barrhorn, Vanoise, Cottian and Ligurian Alps) and Dauphinois (la Grave, La Mure) domains of the Western Alps. It occurs widely in metapelites, metaconglomerates and metabauxites in association with quartz or diaspore in a large variety of low to high-pressure metamorphic assemblages (GOFFÉ, 1977, 1980, 1984; SARTORI, 1988; JULLIEN & GOFFÉ, 1996). Cookeite records medium temperature conditions (300 to 450°C) of the greenschist to blueschist facies (VIDAL & GOFFÉ, 1991). Cookeite shows a pressure dependence of its polytypism with an increase of structural ordering with pressures from 100 to 1500 Mpa (JULLIEN et al., 1996).

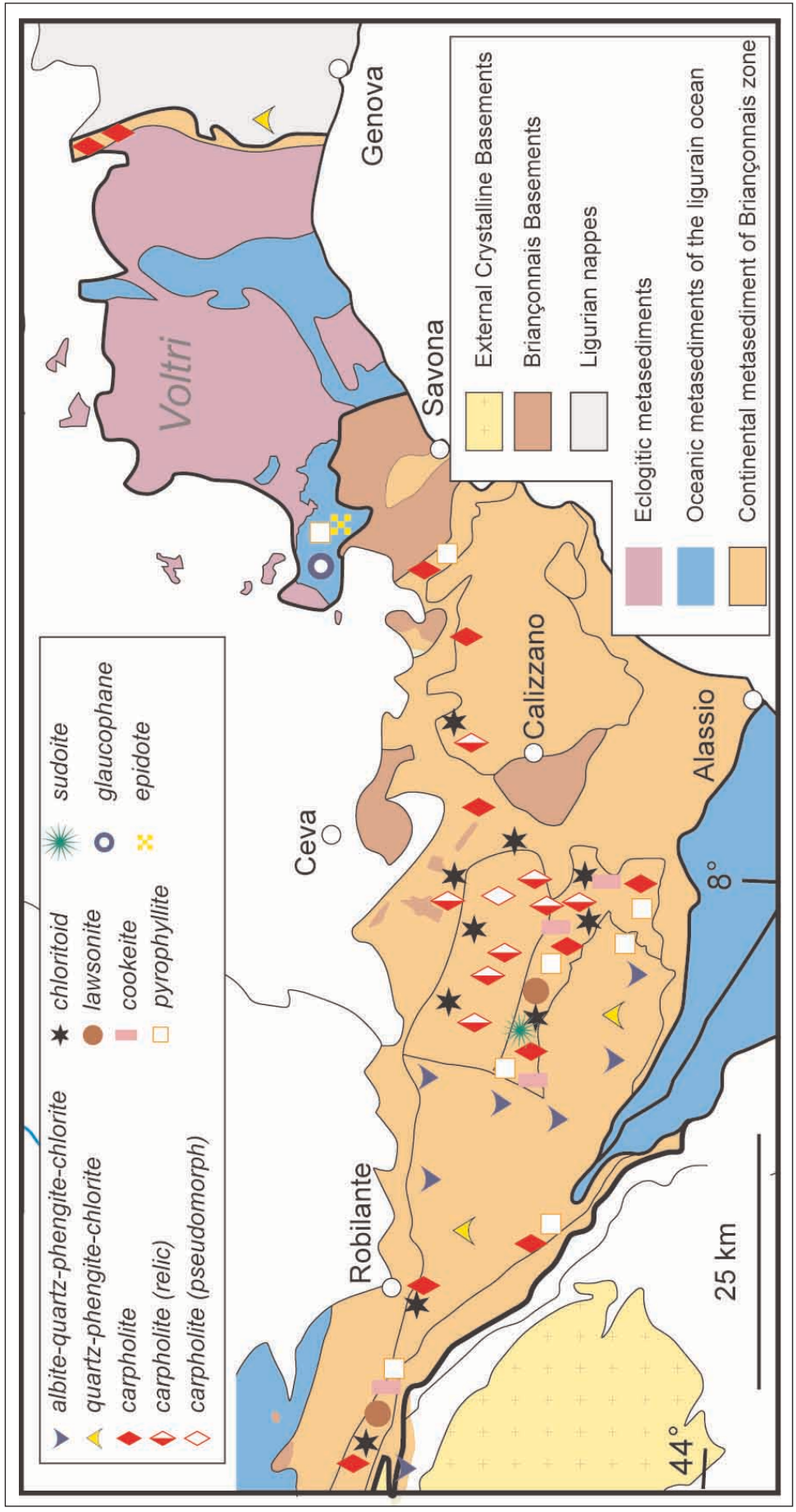


Figure 3 Occurrences of metamorphic index mineral observed in Alpine metasediments of the Greenschist and Blueschist metamorphic zones of Ligurian Alps used to draw the metamorphic map. The structural frame is from the general map.



Very high metamorphic conditions lead the metapelitic system to react continuously to give appearance to kyanite which is associated to a specific mineralogy showing a linear increase of Mg content with the metamorphic grade. This results in pure Mg-endmembers of FMASH system minerals in the coesite stability field such as: magnesiochloritoid, magnesiostauroilite, pyrope, talc, clinocllore in association with unique very high pressure minerals like ellenbergerite, magnesiiodumortierite or bearthite (CHOPIN and CHOPIN et al., 1981-1995, SIMON et al., 1997).

Under quartz-eclogite facies conditions, metapelites have been described and analysed in details since their discovery in the Sesia-Lanzo zone (DAL PIAZ et al, 1972; COMPAGNONI et al., 1977; LARDEAUX et al., 1982; VUICHARD & BALLÈVRE, 1988), where the association of quartz, phengite, jadeite, chloritoid, garnet and glaucophane characterizes the so-called "eclogitic micaschists". Similar well preserved eclogitic metapelites occur in other Austro-Alpine units of the Western Alps for example the Monte Emilius massif (DAL PIAZ et al., 1983).

The organic carbonaceous matter of the metasediments is also an interesting way to follow the metamorphic evolution. The organic carbonaceous matter is particularly abundant in the Western Alps either as coal in the Briançonnais domain or as diffuse marine organic matter in the Schistes Lustrés series. With increasing metamorphic grade the organic matter evolves continuously from disoriented structures (turbostratic) in the sub-greenschist facies to perfectly organized graphite in UHP facies in the Dora Maira massif through carbons having peculiar onion like shaped structures in the blueschist facies (BEYSSAC et al., 2002). This evolution can be linked to the temperature evolution without evidences of a pressure effect (BEYSSAC et al., 2002). Graphite appears in high temperature and high-pressure blueschist facies. Diamond was never found, neither characteristic carbonaceous structures resulting of its retromorphosis (BEYSSAC & CHOPIN, 2003). Anomalous well preserved organic matter ( $C_n$  gas, liquid hydrocarbons, low evolved solid carbonaceous matter) are reported in the blueschist facies of the Western Vanoise (GOFFÉ, 1982, GOFFÉ & VILLEY, 1984).

### ***b) Mafic rocks***

Mafic rocks from the Western Alps represent ophiolite suites mainly formed during the opening of the Piemont-Ligurian oceanic basin during Jurassic times (LOMBARDO et al., 1978; POGNANTE, 1980; LOMBARDO & POGNANTE, 1982). However, a limited number of mafic rocks derive from metamorphosed continental crust as for example meta-amphibolites and meta-granulites from the Sesia-Lanzo zone (LARDEAUX & SPALLA, 1991).

Mineralogical and geochemical studies have demonstrated that the Western Alps ophiolites derive from partial melting of rather homogeneous peridotites which generated melts similar to normal – MORB. Consequently Alpine metabasalts represent differentiated (Fe-Ti rich) tholeiitic liquids. On the other hand, metagabbros display a wide spectrum of compositions ranging from Cr-Mg rich gabbros to Fe-Ti gabbros. Therefore, the so-called mafic metamorphic rocks in the Western Alps derive from the various protoliths following a tholeiitic differentiation trend:

- Mg ( $\pm$  Cr) rich gabbros: olivine-bearing cumulates,
- Intermediate gabbros: gabbro-norites,
- Fe-Ti rich gabbros: ilmenite and magnetite-bearing gabbros,
- Fe-Ti rich basalts

Moreover, some of these lithologies have been subjected to ocean-floor hydrothermal activity leading to the development of rodingitic alterations. When affected by high-pressure Alpine metamorphism, these rocks correspond to metarodingites with peculiar mineralogical associations (BEARTH, 1967; DAL PIAZ, 1967).

In our metamorphic map, we select Fe-Ti rich metabasalts and metagabbros for the definition of the metamorphic facies because, in comparison with other gabbro compositions, the ophiolitic Fe-Ti rocks show better developed high- pressure and low-temperature metamorphic assemblages. Metagabbros, in many cases, show incomplete metamorphic recrystallization allowing to study reaction mechanisms at the boundaries between the magmatic mineral relics.

At quartz-bearing eclogite-facies conditions, the following mineralogical associations have been recognized (LOMBARDO et al, 1978; DAL PIAZ & ERNST, 1978; LARDEAUX et al., 1986, 1987; POGNANTE & KIENAST, 1987).

- Mg ( $\pm$  Cr) rich metagabbros: omphacite ( $\pm$  smaragdite), pale blue/colourless glaucophane, zoisite,  $\pm$  chlorite,  $\pm$  Mg-chloritoid,  $\pm$  talc,  $\pm$  kyanite,  $\pm$  scarce garnet,  $\pm$  fuchsite
- Intermediate metagabbros: omphacite , garnet, zoisite, glaucophane,  $\pm$  jadeite,  $\pm$  talc,  $\pm$  paragonite
- Fe-Ti rich metagabbros and metabasalts: omphacite ( $\pm$  jadeite ), garnet, zoisite, rutile, glaucophane,  $\pm$  paragonite,  $\pm$  phengite,  $\pm$  clinozoisite,  $\pm$  Fe-talc
- Metarodingites: diopside and / or «omphacitic clinopyroxene», grandite and / or grossular rich garnet, epidote, chlorite,  $\pm$  idocrase,  $\pm$  amphibole,  $\pm$  Ti-clinohumite

Under blueschist-facies conditions, the following associations have been described:

- Mg ( $\pm$  Cr) rich metagabbros: Amphibole, chlorite, clinozoisite,  $\pm$  white micas
- Intermediate metagabbros: Na-amphibole, chlorite,  $\pm$  clinozoisite,  $\pm$  sphene,  $\pm$  lawsonite
- Fe-Ti rich metagabbros and metabasalts: Acmite-rich clinopyroxene, «omphacitic» clinopyroxene, glaucophane, epidote (or lawsonite), sphene,  $\pm$  garnet,  $\pm$  white micas

In Fe-Ti matagabbros, at P-T blueschist facies conditions, the chemical evolution of the clinopyroxenes is controlled by the existence of non-omphacitic unmixing domains for temperatures lower than 350°C (CARPENTER, 1980). Fe-Ti metagabbros show different chemical evolution of their initial magmatic clinopyroxene (augitic-cpx). Indeed, under low-temperature blueschist facies conditions (i.e. lawsonite-glaucophane conditions), the increase of the P-T conditions during Alpine metamorphism is recorded by an increase of the Fe-content in clinopyroxene from the core to the rim of the initial magmatic clinopyroxene, with apparition of acmite-rich clinopyroxene on the crystal rims (POGNANTE & KIENAST, 1987). Whereas under high-temperature blueschist (i.e. zoisite-glaucophane conditions), the increase of the P-T conditions during Alpine metamorphism is characterized by an increase of the Na component in clinopyroxene leading to the crystallisation of omphacite (SCHWARTZ, 2001).

Spectacular metamorphic transformations can be observed in mafic rocks of continental origin. In eclogitized amphibolites and granulites, high-temperature calcic amphiboles are progressively replaced by calco-sodic (barroisite) and sodic amphiboles (glaucophane), sometimes in association with phengites. Associations of zoisite, garnet and omphacite are developed at the expense of plagioclase or at the plagioclase/amphibole, plagioclase/ilmenite or plagioclase/pyroxene boundaries, while coronas of rutile are frequently developed around ilmenite grains.

### *c) Meta-granitoids*

In the Western Alps the following protoliths have been recognized for the meta-granitoids:

- Biotite-bearing granites and granodiorites,
- Two-micas granites,
- Fe-rich syenites,
- Trondhjemites, plagiogranites and quartz-keratophyres in ophiolites.

It should be underlined that eclogitized metagranites from the Sesia-Lanzo zone have been regarded as the first indication for the subduction of the continental crust (DAL PIAZ et al., 1972; COMPAGNONI & MAFFEO, 1976; COMPAGNONI et al., 1977; LARDEAUX et al., 1982; OBERHÄNSLI et al., 1982).

Under quartz-eclogite facies conditions, in mica-rich granites and granodiorites, the igneous mineralogy is replaced by an high-pressure metamorphic association composed of: jadeite, phengite, garnet, zoisite, rutile and quartz. K-feldspar is generally recrystallised but remains stable sometimes with intergrowths of white micas and quartz. An association of jadeite and zoisite replaces plagioclase, while, close to the biotites/plagioclases boundaries, Ca-rich garnet develops as thin coronas. Biotites are replaced by coronitic garnets and an association of phengite, quartz and rutile. Magmatic muscovites are replaced by celadonites-rich white micas, while quartz recrystallised (sometimes in coesite) and zircons, apatite and tourmalines remain as residual phases.

In Fe-rich syenites (LARDEAUX et al., 1983), the metamorphic high-pressure mineralogy is composed by ferro-omphacites, garnets and epidotes.

In leucocratic rocks from Alpine ophiolites (i.e. trondhjemites, quartz-keratophyres or plagiogranites), the Alpine eclogite facies metamorphism leads the development of: jadeite, quartz, phengite, ± garnet, ± epidote and rutile (LOMBARDO et al., 1978; POGNANTE et al., 1982).

Meta-granitoids reworked under blueschist facies conditions have been described in Vanoise, Ambin and Acceglio massifs (GAY, 1973; SALIOT, 1978; GANNE et al., 2003; ROLLAND et al., 2000; SCHWARTZ et al., 2000). In the Acceglio massif the metamorphic conditions reach the transition between high-temperature blueschist and eclogite facies conditions. The observed metamorphic assemblages consist of an association of quartz, jadeite, phengite, lawsonite or epidote, ± almandine-rich garnet. Secondary magmatic minerals like zircons, apatite and tourmaline are frequently well preserved.

## 5 - Conclusions

The metamorphic structure of the western part of the Alpine belt shows probably the best preserved example of the "Alpine-type" metamorphism with a continuous evolution of high pressure conditions from very low temperature conditions to the highest ones. These conditions can be observed in all lithologies with a near theoretical coherence between them.

As shown in the synthetic cross section through the Western Alps (Fig.1), these high-pressure and low-temperature conditions can be considered as relicts of the early (pre Oligocene) evolution of the belt related to the subduction processes. Three main geodynamic consequences can be emphasised after our metamorphic analysis:

- Even in a mature collisional belt like the Western Alps, the memory of subduction processes should be well preserved in a fossil accretionary wedge like the western internal Alps.
- Both oceanic and continental crustal slices should be involved in the subduction zone during plate convergence. In Western Alps, numerous examples of subducted continental crust have been exhumed and are now preserved in Austro-Alpine (i.e. Sesia-Lanzo, Mt. Emilius klippe, etc.) and Penninic units (i.e. Internal Crystalline Massifs, Dora-Maira, Gran-Paradiso, Monte Rosa, etc.).
- The huge mass of weathered sediments issued from the erosion of the Hercynian belt and reworked during the Thethys opening along its passive margins, led to a peculiar metamorphic belt constituted by a large metasedimentary orogenic wedge characterized by prevalent high pressure-low temperature conditions (GOFFÉ et al. 2003). This could be considered as the definition of the so-called Alpine type metamorphism sensu stricto characterized by a high-pressure – low-temperature regime of 10°C/km or less. These metamorphic conditions contrast with those prevailing early in the Eastern Alps and lately in Central Alps where the pressure-temperature ratio is highest even at high pressure (see the map) and where mainly continental crust is involved in the orogenic process.

Now, the present-day ongoing continental collision process involves the European crust and the thermal regime is changing. Alpine metamorphism evolves from the early high-pressure and low-temperature conditions to present-day high-temperature and medium-pressure metamorphic conditions. These conditions, clearly expressed in the Central Alps, can be already observed in the external part of the Western Alps around the external crystalline massifs and probably prevail at depth in the orogenic root (Fig. 1).

### Cited and selected relevant bibliographic references

- AGARD, P., JOLIVET, L. & GOFFÉ, B. (2001): Tectonic evolution of the Schistes lustrés complex: implications for the exhumation of HP and UHP rocks in the Western Alps. - *Bull. Soc. Geol. France*, 172, 617-636.
- AGARD, P., VIDAL, O. & GOFFÉ, B. (2001): Interlayer and Si content of phengite in HP-LT carpholite-bearing metapelites. - *J. metamorphic Geol.*, 19, 477-493.
- AGARD, P., MONIÉ, P., JOLIVET, L. & GOFFÉ, B. (2002): In situ laser probe  $^{40}\text{Ar}/^{39}\text{Ar}$  constraints on the exhumation of the Schistes Lustrés unit: geodynamic implications for the evolution of the Western Alps. - *J. metamorphic Geol.*, 20, 599-618.

- APRAHAMIAN, J. (1988); Cartographie du métamorphisme faible à très faible dans les Alpes Françaises externes par l'utilisation de la cristallinité de l'illite. - *Geodinamica acta*, 2, 1, 25-32.
- AVIGAD, D. (1992): Exhumation of coesite-bearing rocks in the Dora-Maira massif (western Alps, Italy). - *Geology* 20, 947-950.
- AVIGAD, D. N., CHOPIN, C. & LE BAYON, R. (2003): Thrusting and extension in the southern Dora-Maira Ultra-high-Pressure massif (Western Alps): View from below the Coesite-bearing Unit. - *J. Geol.*, 111, 57-70.
- BADOUX, H. & DE WEISSE, G. (1959) : Les bauxites siliceuses de Drévenouse. - *Bull. soc. Vaud. Sci. Nat.*, 67, 169-177.
- BARLIER, J., RAGOT, J. P. & TOURAY J. C. (1974) : L'évolution des Terres Noires Subalpines méridionales d'après l'analyse minéralogique des argiles et de la réflectométrie des particules carbonées. - *Bull B.R.G.M., serie 2, II/6*, 533-548.
- BEARTH, P. (1967): Die Ophiolithe der Zone von Zermatt-Saas Fee. *Beitr. Geol. Karte CH, NF 132*, 130p.
- BEYSSAC, O., GOFFÉ, B., CHOPIN, C. & ROUZAUD, J. N. (2002): Raman spectrum of carbonaceous material in metasediments: a new geothermometer. - *J. metamorphic Geol.*, 20, 859-871.
- BEYSSAC, O., ROUZAUD, J. N., GOFFÉ, B., BRUNET, F. & CHOPIN, C. (2002): Graphitization in a high-pressure, low-temperature metamorphic gradient: a Raman microspectroscopy and HRTEM study. - *Contrib. Mineral. Petrol.*, 143, 19-31.
- BEYSSAC, O. & CHOPIN, C. (2003): Comment on "Diamond, former coesite and supersilicic garnet in metasedimentary rocks from the Greek Rhodope: a new ultrahigh-pressure metamorphic province established" by E. D. Mposkos and D.K. Kostopoulos - [*Earth Planet. Sci. Lett.* 192 (2001) 497-506] *Earth. Planet. Sci. Lett.*, 214, 3-4, 669-674.
- BIINO, G. & COMPAGNONI, R. (1992): Very-High Pressure Metamorphism of the Brossasco Coronite Metagranite, Southern Dora-Maira-Massif, Western Alps. - *Schweiz. Mineral. Petrogr. Mitt.*, 72, 3, 347-363.
- BOCQUET, J. (1971): Cartes de répartition de quelques minéraux du métamorphisme alpin dans les Alpes franco-italiennes. - *Eclogae geol. Helv.*, 64, 71-103.
- BOCQUET, J. (1974): Etudes minéralogiques et pétrographiques sur les métasédiments d'âge alpin dans les Alpes françaises. - Thèse de doctorat, Grenoble, 476 p.
- BORGHI, A., CADOPPI, P., PORRO, A. & SACCHI, R. (1985): Metamorphism in the northern part of the Dora Maira Massif (Cottian Alps). - *Boll. Mus. Reg. Sci. Nat; Torino*, 3, 369-380.
- BORGHI, A., COMPAGNONI, R. & SANDRONE, R. (1996): Composite PT paths in the internal massifs of the Western Alps: petrological constraints to their thermomechanical evolution. - *Eclogae geol. Helv.* 89, 345-367.
- BOUFFETTE, J., LARDEAUX, J. M. & CARON, J. M. (1993): Le passage des granulites aux écolites dans les métapelites de l'unité de la Punta Muret (Massif Dora-Maira, Alpes occidentales). - *C. R. Acad. Sci. Paris* 317/2, 1617-1624.
- BOUSQUET, R., GOFFÉ, B., HENRY, P., LE PICHON, X. & CHOPIN, C. (1997): Kinematic, thermal and petrological model of the Central Alps: Lepontine metamorphism in the Upper Crust and eclogitisation of the lower crust. - *Tectonophysics*, 273, 105-127.
- BROUWER, F. M., VISSERS, R. L. M. & LAMB, W. M. (2002): Metamorphic history of eclogitic metagabbro blocks from a tectonic melange in the Voltri Massif, Ligurian Alps, Italy. - *Ophioliti*, 27, 1, 1-16.
- BROUWER, F. M., VAN DE ZEDDE, D. M. A., WORTEL, M. J. R. & VISSERS, R. L. M. (2004): Late-orogenic heating during exhumation: Alpine PTt trajectories and thermomechanical models. - *Earth. Planet. Sci. Lett.*, 220, 1-2, 185-199.

- BRUNET, F. & CHOPIN, C. (1995): Bearthite,  $\text{Ca}_2\text{Al}(\text{PO}_4)_2\text{OH}$ : synthesis, stability and thermodynamic properties. - *Contrib. Mineral. Petrol.*, 121, 258-266.
- CABELLA, R., CORTESOGNO, L., DALLAGIOVANNA, G., GAGGERO, L. & LUCCHETTI, G. (1991): Metamorfismo alpino a giadeite + quarzo in crosta continentale nel Brianzonese ligure. - *Atti Tic. Sci. Terra, Pavia*, 34, 43-54.
- CABELLA, R., CORTESOGNO, G., GAGGERO, L. & LUCCHETTI, G. (1994): Clinopyroxene through the blueschists facies metamorphisms of the Ligurian Alps: compositional variability and miscibility gaps. - *Atti Tic. Sci. Terra, Pavia (serie speciale)*, 1, 55-63.
- CABY, R., KIENAST, J. R. & SALIOT, P. (1978): Structure, Métamorphisme et modèle d'évolution tectonique des Alpes Occidentales. - *Rev. Géographie Phys. & Géol. dynamique*, 20, 307-322.
- CABY, R. (1996): Low-angle extrusion of high-pressure rocks and the balance between outward and inward displacements of Middle Penninic units in the western Alps. - *Eclogae geol. Helv.*, 89, 1, 229-267.
- CANNIC, S., LARDEAUX, J. M., MUGNIER, J. L. & HERNANDEZ, J. (1996): Tectono-metamorphic evolution of the Roignais-Versoyen Unit (Valaisan domain, France). - *Eclogae geol. Helv.*, 89, 1, 321-343.
- CARON, J. M. (1974): Rapports entre diverses 'generations' de lawsonite et les déformations dans les Schistes lustrés des Alpes cottiennes septentrionales (France et Italie). - *Bull. Soc. Geol. de France*, 16, 255-268.
- CARON, J. M. (1977): Lithostratigraphie et tectonique des schistes lustrés dans les Alpes cottiennes septentrionales et en Corse orientale. - *Sci. Géol., Strasbourg, mémoire 48*, 326p.
- CARON, J. M. & SALIOT, P. (1969): Nouveaux gisements de lawsonite et de jadeite dans les alpes franco-Italienne; *C. R. Acad. Sc. Paris*, 268, 3153-3156.
- CARON, J. M. & PÉQUIGNOT, G. (1986): The transition between blueschists and lawsonite-bearing eclogites based on observations from Corsican metabasalts. - *Lithos*, 19, 205-218.
- CARPENTER, M. A. (1980): Mechanism of exsolution in pyroxenes. - *Contrib. Mineral. Petrol.*, 71, 289-300.
- CHOPIN, C. (1981): Talc-phengite: a widespread assemblage in high-grade pelitic blueschists of the Western Alps. - *J. Petrol.* 22, 628-650.
- CHOPIN, C. (1983): Magnesiochloritoid, a key-mineral for the petrogenesis of high-grade pelitic blueschists. - *Bull. Minéral.*, 106, 715-717.
- CHOPIN, C. (1984): Coesite and pure pyrope in high-grade blueschists of the western Alps: a first record and some consequences. - *Contrib. Mineral. Petrol.*, 86, 107-118.
- CHOPIN, C. (1985): Les relations de phases à haute pression dans les roches pélitiques. Approche expérimentale et naturaliste. Conséquences géodynamiques pour les Alpes occidentales. - *Doctorat d'Etat, Université Paris 6, Mémoires des Sciences de la Terre n° 85-11*, 80 p. + annexes.
- CHOPIN, C. (1986): Phase relationships of ellenbergerite, a new high-pressure Mg-Al-Ti-silicate in pyrope-coesite-quartzite from the Western Alps. IN: *Blueschists and eclogites*, E. H. BROWN & B. W. EVANS (EDS). - *Geol. Soc. Amer. Mem.* 164, 31-42.
- CHOPIN, C. (1987): Very-high-pressure metamorphism in the western Alps: implications for the subduction of continental crust. IN: *Tectonic settings of regional metamorphism*, E. R. OXBURGH, B. W. D. YARDLEY, P. C. ENGLAND (EDS). - *Phil. Trans. Royal Soc. London A-321*, 183-197.
- CHOPIN, C. & SCHREYER, W. (1983): Magnesiochloritoid and Magnesiochloritoid: two index minerals of pelitic blueschists and their preliminary phase relations in the model system  $\text{MgO-Al}_2\text{O}_3\text{-SiO}_2\text{-H}_2\text{O}$ . - *Am. J. Sci.*, 283-A, 72-96.
- CHOPIN, C. & MONIÉ, P. (1984): A unique magnesiochloritoid-bearing, high-pressure assemblage from the Monte Rosa, Western Alps: petrologic and  $^{40}\text{Ar}/^{39}\text{Ar}$  radiometric study. - *Contrib. Mineral. Petrol.*, 87, 388-398.
- CHOPIN, C., HENRY, C. & MICHARD, A. (1991): Geology and Petrology of the coesite-bearing, Dora Maira Massif, Western Alps. - *Eur. J. Mineral.*, 3, 263-289.

- CHOPIN, C., BRUNET, F., GEBERT, W., MEDENBACH, O. & TILLMANN, E. (1993): Bearthite,  $\text{Ca}_2\text{Al}[\text{PO}_4]_2(\text{OH})$ , a new mineral from high-pressure terranes of the western Alps. - *Schweiz. Mineral. Petrogr. Mitt.*, 73, 1-9.
- CHOPIN, C., FERRARIS, G., IVALDI, G., SCHERTL, H-P., SCHREYER, W., COMPAGNONI, R., DAVIDSON, C. & DAVIS, M. (1995): Magnesiodumortierite, a new mineral from very-high-pressure rocks (western Alps). II. Crystal chemistry and petrological significance. - *Eur. J. Mineral.*, 7, 525-535.
- CHOPIN, C. & SCHERTL, H. P. (1999): The UHP unit in the Dora Maira Massif, Western Alps. - *Int. Geo. Rev.*, 41, 765-780.
- CHOPIN, C., GOFFÉ, B., UNGARETTI, L. & OBERTI, R. (2003): Magnesio-stauroilite and zinc-stauroilite, a petrologic and crystal-chemical set-up. - *Eur. J. Mineral.*, 15, 167-176.
- COMPAGNONI, R. (1977): The Sesia-Lanzo zone: high pressure- low temperature metamorphism of the Austro-alpine continental margin. - *Rend. Soc. It. Min. Petrol.*, 33, 335-374.
- COMPAGNONI, R. (2003): HP metamorphic belt of the western Alps. - *EPISODES* 26, 3, 200-204.
- COMPAGNONI, R. & MAFFEO, B. (1973): Jadeite-Bearing Metagranites l. s. and Related Rocks in the Mount Mucrone Area (Sesia-Lanzo Zone, Western Italian Alps). - *Schweiz. Mineral. Petrogr. Mitt.*, 53, 3, 355-378.
- COMPAGNONI, R., HIRAJIMA T. & CHOPIN C. (1995): Ultrahigh-pressure metamorphism in the western Alps. Chapter 7 IN: Ultra-high-pressure metamorphism. COLEMAN, R. G. & WANG, X. (EDS). - Cambridge University Press, 206-243.
- DAL PIAZ, G. V. (1974) : Le métamorphisme de haute-pression et basse-température dans l'évolution structurale du bassin ophiolitique alpine-apenninique. - *Schweiz. Mineral. Petr. Mitt.*, 54, 399-424.
- DAL PIAZ, G. V. & GRASSO, F. (1967): Le rodingite l.s. nelle gallerie 'Petit Monde' della autostrada Quincinetto-Aosta; Rodingite in the 'Petit Monde' of the Quincinetto-Aosta tunnel. - *Boll. Soc. Geol. It.*, 86, 3, 395-401.
- DAL PIAZ, G. V. & ERNST, W. G. (1978): Areal geology and petrology of eclogites and associated metabasites of the Piemonte ophiolite nappe, Breuil-St. Jacques area, Italian Western Alps. - *Tectonophysics*, 51, 1-2, 99-126.
- DAL PIAZ, G. V. & LOMBARDO, B. (1986): Early Alpine eclogite metamorphism in the Penninic Monte Rosa-Gran Paradiso basement nappes of the western Alps. - *Geol. Soc. Am. Mem.*, 164, 249-265.
- DAL PIAZ, G. V., HUNZIKER, J. C. & MARTINOTTI, G. (1972): La zona Sesia-Lanzo e l'evoluzione tettonico-metamorfica delle Alpi nord-occidentali interne. - *Mem. Soc. Geol. It.* 11, 433-460.
- DESMONS, J., APRAHAMIAN, J., COMPAGNONI, R., CORTESOGNO, L. & FREY, M. (1999): Alpine metamorphism of the Western Alps: I. Middle to high T/P metamorphism. - *Schweiz. Mineral. Petrogr. Mitt.*, 79, 1, 89-110.
- DESMONS, J., COMPAGNONI, R., CORTESOGNO, L., FREY, M., GAGGERO, L., DALLAGIOVANNA, G., SENO, S. & RADELLI, L. (1999): Alpine metamorphism of the Western Alps: II. High-P/T and related pre-greenschist metamorphism. - *Schweiz. Mineral. Petrogr. Mitt.*, 79, 1, 111-134.
- DEVILLE, M., FUDRAL, S., LAGABRIELLE, Y., MARTHALER, M. & SARTORI, M. (1992): From oceanic closure to continental collision: A synthesis of the 'Schistes Lustrés' metamorphic complex of the Western Alps. - *Bull. Geol. Soc. Amer.*, 104, 127-139.
- DUCHENE, S., BLICHERT-TOFT, J., LUIS, B., TELOUK, P., LARDEAUX, J. M. & ALBAREDE, F. (1997): The Lu-Hf dating of alpine eclogites. - *Nature*, 387, 586-589.
- ELLENBERGER, F. (1958): Etude géologique du pays de Vanoise. - *Mém. expl. Carte géol. Fr.*, 1-562.
- ERNST, W. G. (1973): Interpretative synthesis of the metamorphism in the Alps. - *Bull. Geol. Soc. Amer.*, 84, 2053-2078.
- EVANS, B. W. (1990): Phase relations of epidote-blueschists. - *Lithos*, 25, 3-23.

- FREY, M., HUNZIKER, J. C., FRANK, W., BOCQUET, J., DAL PIAZ, G. V., JAGER, E. & NIGGLI, E. (1974): Alpine metamorphism of the Alps a review. - *Schweiz. Mineral. Petrogr. Mitt.*, 54, 247-291.
- FREY, M., DESMONS, J. & NEUBAUER, F. (1999) The new metamorphic map of the Alps; 1:500000; 1:1000000, *Schweiz. Mineral. Petrogr. Mitt.*, 79, 1, 230.
- GANNE, J., BUSSY, F. & VIDAL, O. (2003): Multi-stage garnet in the internal Briançonnais basement (Ambin massif, Savoy): New petrological constraints on the blueschist-facies metamorphism in the Western Alps and tectonic implications. - *J. Petrol.*, 44, 7, 1281-1308.
- GAY, M. (1973): Le massif d'Ambin et son cadre de schistes lustres (Alpes franco-italiennes); evolution structurale. - *Archives des Sciences*, 25, 2, 165-214.
- GEBAUER, D. (1995): Geochronology of central and western Alps - new methods, new data, new interpretations. - 2nd workshop Alpine Geology, Basel, 32-34.
- GÉLY, J. P. (1989): Stratigraphie, tectonique et métamorphisme comparés de part et d'autre du Front pennique en Tarentaise (Alpes de Savoie, France). - Thèse de doctorat, Chambéry, 343 p.
- GELY, J. P. & BASSIAS, Y. (1990): Le front pennique: implications structurales d'un métamorphisme transporté (Savoie, France). - *C. R. Acad. Sci. Paris, T. 310, Série II*, 37-43.
- GILLET, P. & GOFFÉ, B. (1988): On the significance of aragonite occurrence in the Western Alps. - *Contrib. Mineral. Petrol.*, 99, 70-81.
- GOFFÉ, B. (1975): Etude structurale et pétrographique du versant occidental du massif paléozoïque de Chasseforêt (Vanoise méridionale). - Thèse 3ème cycle, Orsay.
- GOFFÉ, B. (1977): Présence de cookéite dans les bauxites métamorphiques du dogger de Vanoise. - *Bull. Soc. Fr. Miner. Crist.*, 100, 254-257.
- GOFFÉ, B. (1977): Succession de subfaciès métamorphiques en Vanoise méridionale (Savoie). - *Contrib. Mineral. Petrol.*, 62, 23-41.
- GOFFÉ, B. (1980): Magnésiocarpholite, cookéite et euclase dans les niveaux continentaux métamorphiques de la zone briançonnaise. Données minéralogiques et nouvelles occurrences. - *Bull. Mineral.*, 103, 297-302.
- GOFFÉ, B. (1982): Définition du faciès à Fe-Mg-carpholite-chloritoïde, un marqueur du métamorphisme de HP-BT dans les métasédiments alumineux. - Thèse Doct. Sci. Paris, 2 vol., 212p.
- GOFFÉ, B. (1984): Le faciès à carpholite-chloritoïde dans la couverture briançonnaise des Alpes Ligures: un témoin de l'histoire tectono-métamorphique régionale. - *Mém. Soc. Géol. It.*, 28, 461-479.
- GOFFÉ, B., GOFFÉ-URBANO, G. & SALIOT P. (1973): Sur la présence d'une variété magnésienne de ferro-carpholite en Vanoise (Alpes françaises). Sa signification probable dans le métamorphisme alpin. - *C.R. Acad. Sci., série D*, 277, 1965-1968.
- GOFFÉ, B. & SALIOT, P. (1977) : Les associations minéralogiques des roches hyperalumineuses du dogger de Vanoise. Leur signification dans le métamorphisme régional. - *Bull. Soc. Fr. Miner. Crist.*, 100, 302-309.
- GOFFÉ, B. & VELDE, B. (1984): Contrasted metamorphic evolutions in the thrust cover units of Briançonnais zone (French Alps): a model for the conservation of HP-LT metamorphic mineral assemblages. - *Earth. Plan. Sci. Lett.*, 68, 351-360.
- GOFFÉ, B. & VILLEY, M. (1984): Texture d'un matériel carboné impliqué dans un métamorphisme haute pression-basse température (Alpes françaises). Les hautes pressions influencent-elles la carbonification? - *Bull. Mineral.*, 107, 81-91.
- GOFFÉ, B. & CHOPIN, C. (1986): High-pressure metamorphism in the Western Alps: zoneography of metapelites, chronology and consequences. - *Schweiz. Mineral. Petrogr. Mitt.*, 66, 41-52.
- GOFFÉ, B., MURPHY, W. M. & LAGACHE, M. (1987): Experimental transport of Si, Al and Mg in hydrothermal solutions: an application to vein mineralization during high-temperature, low pressure metamorphism in French Alps. - *Contrib. Mineral. Petrol.*, 97, 438-450.



- GOFFÉ, B. & BOUSQUET, R. (1997) Ferrocapholite, chloritoïde et lawsonite dans les métapelites des unités du Versoyen et du Petit St Bernard (zone valaisanne, Alpes occidentales). - *Schweiz. Mineral. Petrogr. Mitt.*, 77, 137-147.
- GOFFÉ, B., BOUSQUET, R., HENRY, P. & LE PICHON X. (2003): Effect of the chemical composition of the crust on the metamorphic evolution of orogenic wedges. - *J. metamorphic Geol.*, 21, 123-141.
- HENRY, C. (1990): L'Unité à coesite du massif de Dora maira dans son cadre pétrologique et structural (Alpes occidentales, Italie). - Ph D. Thesis, Université Paris VI, 453p
- HENRY, C., BURKHARD, M. & GOFFÉ, B. (1996): Evolution of symetamorphic veins and their wallrocks through a Western Alps transect: no evidence for large-scale fluid flow! Stable isotope, major-, trace and rare-earth- elements systematics. - *Chemical Geology*, 127, 81-109.
- HIRAJIMA, T. & COMPAGNONI, R. (1993) Petrology of a jadeite quartz coesite almandine phengite fels with retrograde ferro-nyboite from the Dora-Maira massif, western Alps. - *Eur. J. Mineral.* 5, 5, 943-955.
- HUNZIKER, J. C., DESMONS, J. & HURFORD, A. J. (1992): Thirty-two years of geochronological work in the Central and Western Alps: a review on seven maps. - *Mém. Géol. Lausanne*, 13, 1-59.
- JABOYEDOFF, M. & THELIN, P. (1996): New data on low grade metamorphism in the Briançonnais domain of the Préalpes, Western Switzerland. - *Eur. J. Mineral.*, 8, 577.
- JULLIEN, M. & GOFFÉ, B. (1993): Occurrences de cookeite et de pyrophyllite dans les schistes du Dauphinois (Isère, France). Conséquences sur la répartition du métamorphisme dans les zones externes alpines. - *Schweiz. Mineral. Petrogr. Mitt.*, 73, 357-363.
- JULLIEN, M., BARONNET, A. & GOFFÉ, B. (1996): Ordering of the stacking sequence in cookeite ordering with increasing pressure: An HRTEM study. - *Amer. Mineral.*, 81, 67-78.
- KIENAST, J. R. & MESSIGA, B. (1987): Cr-rich Mg-chloritoid, a first record in high-pressure metagabbros from Monviso (Cottian Alps), Italy. - *Min. Mag.*, 51, Part 5, 681-687, illus. incl. 4 tables, 16 refs.
- KIENAST, J. R., LOMBARDO, B., BIINO, G. & PINARDON, J. L. (1991): Petrology of very-high-pressure eclogitic rocks from the Brossasco-Isasca Complex, Dora-Maira Massif, Italian Western Alps. - *J. metamorphic Geol.*, 9, 19-34.
- LARDEAUX, J. M., GOSSO, G., KIENAST, J. R., & LOMBARDO, B. (1982): Relations entre le métamorphisme et la déformation dans la zone Sesia-Lanzo (Alpes occidentales) et le problème de l'éclogitisation de la croûte continentale. - *Bull. Soc. géol. Fr.*, 7, 24, 793-800.
- LARDEAUX, J. M., LOMBARDO, B., GOSSO, G. & KIENAST, J. R. (1983): Découverte de paragenèses à ferro-omphacites dans les orthogneiss de la zone Sésia-Lanzo septentrionale (Alpes Italiennes). - *C.R. Acad. Sc. Paris*, t. 296, sér. II, 453-456.
- LARDEAUX, J. M., CARON, J. M., NISIO, P., PEQUIGNOT, G. & BOUDEULLE, M. (1986): Microstructural criteria for reliable thermometry in low-temperature eclogites. - *Lithos*, 19, 187-203.
- LARDEAUX, J. M., NISIO, P. & BOUDEULLE, M. (1987): Deformational and metamorphic history at the Lago Superiore area of the Monviso ophiolitic complex (Italian Western Alps): a record of subduction-collision cycle? - *Ofioliti*, 12, 3, 479-502.
- LARDEAUX, J. M. & SPALLA, M. I. (1991): From granulites to eclogites in the Sesia Zone (Italian Western Alps); a record of the opening and closure of the Piedmont ocean. IN: COMPAGNONI, R. & PICCARDO, G. B. (EDS), High-pressure metamorphism in the Western Alps. - *J. metamorphic Geol.*, 9, 1, 35-59.
- LEIKINE, M., KIENAST, J. R., ELTCHANINOFF-LANCELOT, C. & TRIBOULET, S. (1983): Le métamorphisme polyphasé des unités dauphinoises entre Belledonne et Mont Blanc (Alpes occidentales). Relation avec les épisodes de déformation. - *Bull. Soc. géol. France*, t XXV, 575-587.
- LOMBARDO, B., NERVO, R., COMPAGNONI, R., MESSIGA, B., KIENAST, J. R., MEVEL, C., FIORA, L., PICCARDO, G. B. & LANZA, R. (1978): Osservazioni preliminari sulle ofioliti metamorfiche del

- Monviso (Alpi Occidentali); Preliminary observations of the Monviso ophiolite complex; Western Alps. - *Rend. Soc. Ital. Miner. Petrol.*, 34, 2, 253-302.
- LOMBARDO, B. & POGNANTE, U. (1982): Tectonic implications in the evolution of the Western Alps ophiolite metagabbros IN: BORTOLOTTI, V. (ED), *Ophiolites and actualism*. - *Ofioliti*, 7, 2-3, 371-394.
- LOMBARDO, B. (1995) : Studies on metamorphic rocks and minerals of the Western Alps; a volume in memory of Ugo Pognante (1954-1992) - *Bollettino Museo Regionale di Scienze Naturali*, 13, 2, Suppl., 362p.
- LUCCHETTI, G., CABELLA, R. & CORTESOGNO, L. (1990): Pumpellyites and coexisting minerals in different low-grade metamorphic facies of Liguria, Italy. - *J. metamorphic Geol.*, 8, 5, 539-550.
- MESSIGA, B. (1984): Il metamorfismo alpino nelle Alpi Liguri; alcuni aspetti petrologici; Alpine metamorphism in the Ligurian Alps; some petrologic aspects. IN: *Atti del convegno sul tema Geologia delle Alpi Liguri*. VANOSSO, M. (ED). - *Mem. Soc. Geol. Ital.*, 28, 151-179.
- MESSIGA, B. (1987): Alpine metamorphic evolution of Ligurian Alps (Northwest Italy) - chemography and petrological constraints inferred from metamorphic climax assemblages. - *Contrib. Mineral. Petrol.*, 95, 3, 269-277.
- MESSIGA, B., PICCARDO, G. B. & VANOSSO, M. (1978): Dati preliminari sulla distribuzione del metamorfismo alpino nei terreni pre-mesozoici liguri; Preliminary data on the distribution of alpine metamorphism in the territory of pre-Mesozoic Liguria. - *Rend. Soc. Ital. Min. Petr.*, 34, 2, 351-368.
- MESSIGA, B., OXILIA, M., PICCARDO, G. B. & VANOSSO, M. (1982): Fasi metamorfiche e deformazioni alpine nel Brianzonese e nel Pre-Piemontese - Piemontese esterno delle Alpi liguri: un possibile modello evolutivo. - *Rend. Soc. Ital. Miner. Petr.*, 38, 1, 261-280.
- MESSIGA, B., TRIBUZIO, R. & SCAMBELLURI, M. (1992): Mafic eclogites from the Valais crystalline massif (Ligurian Alps, Italy). - *Schweiz. Mineral. Petrogr. Mitt.*, 72, 3, 365-377.
- MESSIGA, B., SCAMBELLURI, M. & PICCARDO, G. B. (1995) Chloritoid-bearing assemblages in mafic systems and eclogite-facies hydration of alpine Mg-Al metagabbros (Erro-Tobbio unit, Ligurian Western Alps). - *Eur. J. Miner.*, 7, 5, 1149-1167.
- MESSIGA, B., KIENAST, J. R., REBAY, G., RICCARDI, M. P. & TRIBUZIO, R. (1999): Cr-rich magnesiochloritoid eclogites from the Monviso ophiolites (Western Alps, Italy). - *J. metamorphic Geol.*, 17, 3, 287-299.
- MICHARD, A., HENRY, C. & CHOPIN, C. (1995): Structures in ultrahigh-pressure rocks, a case study from the Alps. IN: Chapter 4: Ultra-high-pressure metamorphism, R.G. COLEMAN & X. WANG (EDS). - Cambridge University Press, 132-158.
- MONIÉ, P. & PHILIPOT, P. (1989): Mise en évidence de l'âge éocène moyen du métamorphisme de haute pression dans la nappe ophiolitique du Monviso (Alpes occidentales) par la méthode  $^{40}\text{Ar}$ - $^{39}\text{Ar}$ . - *C.R. Acad. Sci. Paris*, 309/2, 245-251.
- MONIÉ, P. & CHOPIN, C. (1991):  $^{40}\text{Ar}/^{39}\text{Ar}$  dating in coesite-bearing and associated units of the Dora-Maira massif, Western Alps. - *Eur. J. Mineral.* 3, 239-262.
- NISIO, P. & LARDEAUX, J. M. (1987): Retromorphic Fe-rich talc in low-temperature eclogites: example from Monviso (Italian Western Alps). - *Bull. Minéral.*, 110, 427-437.
- OBERHÄNSLI, R., J. C. HUNZIKER, G. MARTINOTTI & STERN, W. F. (1982): Monte Mucrone: Eine eoalpin eklogitierter permischer Granit. - *Schweiz. Mineral. Petrogr. Mitt.* 62.
- OBERHÄNSLI, R., HUNZIKER, J. C., MARTINOTTI, G. & STERN, W. B. (1985): Geochemistry geochronology and petrology of Monte Mucrone: an example of Eo-Alpine eclogitization of Permian granitoids in the Sesia-Lanzo zone, Western Alps, Italy. - *Chemical Geology*, 52, 165-184.
- OBERHÄNSLI, R., GOFFÉ, B. & BOUSQUET, R. (1995): Record of a HP-LT metamorphic evolution in the Valais zone; Geodynamic implications. IN: *Studies on metamorphic rocks and minerals of the Western Alps*,

- B. LOMBARDO (ED.). - *Boll. Museo Reg. Sci. Nat.*, 13/2, 221-240.
- PHILIPPOT, P. & SCAMBELLURI, M. (1995): The composition and behaviour of fluids in high-pressure rocks from the Alps: a review. IN: *Studies on metamorphic rocks and minerals of the western alps*, LOMBARDO, B. (ED). – *Suppl. Boll. museo regionale di scienze naturali*, 13, 75-102.
- PIANTONE, P. (1980) : *Magmatisme et Métamorphisme des roches intrusives calco-alcalines du Carbonifère briançonnais entre Arc et Durance : minéralogie, pétrographie, géochimie*. -Thèse 3eme cycle, Univ. Sci. Médic. Grenoble, 215p.
- POGNANTE, U. (1980):Preliminary data on the Piemonte ophiolite nappe in the lower Val Susa-Val Chisone area, Italian western Alps. - *Ofioliti*, 5, 2-3, 221-240.
- POGNANTE, U. (1984): Eclogitic versus blueschist metamorphism in the internal Western Alps along the Susa Valley traverse. - *Sciences Geologiques (Bulletin)*, 37, 1, 29-36.
- POGNANTE, U. (1989): Lawsonite, blueschist and eclogite formation in the southern Sesia zone (western Alps, Italy). - *Eur. J. Mineral.*, 1, 89-104.
- POGNANTE, U. (1991): Petrological constraints on the eclogite- and blueschist-facies metamorphism and P-T-t paths in the Western Alps. - *J. metamorphic Geol.*, 9, 5-17.
- POGNANTE, U., LOMBARDO, B. & VENTURELLI, G. (1982): Petrology and geochemistry of Fe-Ti gabbros and plagiogranites from the Western Alps ophiolites. - *Schweiz. Mineral. Petrogr. Mitt.*, 62, 3, 457-472.
- POGNANTE, U. & KIENAST, J. R. (1987): Blueschist and eclogite transformations in Fe-Ti gabbros; a case from the Western Alps ophiolites. - *J. Petrol.*, 28, 2, 271-292.
- POGNANTE, U., TALARICO, F., RASTELLI, N. & FERRATI, N. (1987): High pressure metamorphism in the nappes of the Valle dell'Orco traverse (Western Alps collisional belt). - *J. metamorphic Geol.*, 5, 3, 397-414.
- POGNANTE, U., TALARICO, F. & BENNA, P. (1988): Incomplete blueschist re-crystallization in high-grade metamorphics from the Sesia-Lanzo Unit (Vasario-Sparone Subunit, Western Alps); a case history of metastability. - *Lithos*, 21, 2, 129-142.
- POGNANTE, U. & SANDRONE, R. (1989): Eclogites in the northern Dora-Maira Nappe (Western Alps, Italy). - *Mineralogy and Petrology*, 40, 1, 57-71.
- POINSSOT, C., GOFFÉ, B. & TOULHOAT, P. (1997): Geochemistry of the Triassic-Jurassic Alpine continental deposits: origin and geodynamic implications. - *Soc Géol. Fr.*, 168, 3, 287-300.
- ROLLAND, Y., LARDEAUX, J. M., GUILLOT, S. & NICOLLET, C. (2000): A comparison of syn-convergent extension, vertical pinching, and metamorphic units at the western margin of Grand Paradis, French-Italian Alps. - *Geodinamica Acta*, 13, 2-3, 133-148.
- SALIOT, P. (1978): *Le métamorphisme dans les Alpes françaises*. - Thèse d'Etat, Univ. Paris, 1-183.
- SALIOT, P. (1979): La jadéite dans les Alpes françaises. - *Bull. Minéral.*, 102, 391-401.
- SALIOT, P., DAL PIAZ, G. V. & FREY, M. (1980): Métamorphisme de haute-pression dans les Alpes franco-italo-suissees. - *Géologie Alpine* 56:203-215
- SALIOT, P. & VELDE, B. (1982): Phengite composition and post-nappe high-pressure metamorphism in the Pennine zone of the French Alps. - *Earth. Planet. Sci. Lett.*, 57, 133-138.
- SANDRONE, R., SACCHI, R., CORDOLA, M., FONTAN, D. & VILLA, I. M. (1988): Metadiorites in the Dora-Maira polymetamorphic basement (Cottian Alps). - *Rend. Soc. It. Mineral. Petrol.* 43, 593-608.
- SARTORI, M. (1988): L'unité du Barrhorn (zone pennique, Valais, Suisse). Un lien entre les Préalpes médianes rigides et leur socle paléozoïque. - Thèse de doctorat, Université de Lausanne, 157 p.
- SCHERTL, H. P., SCHREYER, W. & CHOPIN, C. (1991): The pyrope-coesite rocks and their country rocks at Parigi, Dora Maira Massif, western Alps: detailed Petrography, Mineral Chemistry and PT-Path. - *Contrib. Mineral. Petrol.*, 108, 1-21.

- SCHÜRCH, M. L. (1987): Les ophiolites de la zone du versoyen : témoin d'un bassin à évolution métamorphique complexe. - Thèse de doctorat, Genève, 157 p.
- SCHÜRCH, M.-L., BERTRAND, J., CHESSEX, R. & LOUBAT, H. (1986): Présence de l'omphacite dans la zone du Versoyen (Alpes franco-italiennes): implications structurales. - Abstr. 4e réunion groupe tect. Suisse Genève déc. 1986.
- SCHWARTZ, S. (2001) : La zone piémontaise des Alpes occidentale: un paléo-complexe de subduction; arguments métamorphiques, géochronologiques et structuraux. - Doc. BRGM, vol. 302, 313 pp.
- SCHWARTZ, S., LARDEAUX, J. M. & TRICART P. (2000): La zone d'Acceglio (Alpes cottiennes): un nouvel exemple de croûte continentale éclogitisée dans les Alpes occidentales. - C. R. Acad. Sci. Fr, 312, 859-866.
- SCHWARTZ, S., LARDEAUX, J. M., GUILLOT, S. & TRICART, P. (2000): Diversité du métamorphisme éclogitique dans le massif ophiolitique du Monviso (Alpes occidentales, Italie). - *Geodinamica Acta*, 13, 169-188.
- SICARD, E, CARON, J. M., POTDEVIN, J. L. & DECHOMETTS, R. (1986): Mass-transfer and synmetamorphic deformation in a fold .2. Lawsonite pseudomorphs and characterization of interstitial fluids. - *Bull. Mineral*, 109, 4, 411-422.
- SIMON, G., CHOPIN, C. & SCHENK, V. (1997): Near-end-member magnesiochloritoid in prograde-zoned pyrope, Dora-Maira massif, Western Alps. - *Lithos*, in press
- SPALLA, M. I, DE MARIA, L., GOSSO, G., MILETTO, M. & POGNANTE, U. (1983): Deformazione e metamorfismo della Zona Sesia-Lanzo meridionale al contatto con la falda piemontese e con il Massiccio di Lanzo, Alpi Occidentali. Gosso, G., *Atti del convegno sul Terna; "Geologia strutturale e stratigrafia"*. - *Mem. Soc. Geol. It.*, 26, 2, 499-514.
- SPALLA, M. I., LARDEAUX, J. M., DALPIAZ, G. V., GOSSO, G. & MESSIGA, B. (1996): Tectonic significance of Alpine eclogites. - *Journal of Geodynamics.*, 21, 3, 257-285.
- STEEN, D. & BERTRAND, J. (1977) : Sur la présence de ferrocapholite associée aux schistes à glaucophane de haute Ubaye (Basses Alpes, France). - *Schweiz. Mineral. Petrogr. Mitt.*, 57, 157-168.
- VANOSSI, M. (1981): Les unités géologiques des Alpes maritimes entre l'Ellero et la mer Ligure; un aperçu schématique. - *Mem. Sci. Geol. It.*, 34, 101-142.
- VANOSSI, M. (1990): Alpi Liguri. Parte generale. *Guide Geol. Region.* - *Soc. Geol. It.* 2, 13-55.
- VANOSSI, M., CORTESOGNO, C., GALBIATI, B., MASSIGA, B., PICCARDO, G., VANNUCI, R., (1984): *Geologia delle alpi Liguri : Dati, problemi, ipotesi.* - *Mem. Soc. Geol. It.*, 28, 5-75.
- VIDAL, O. & GOFFÉ, B. (1991): Cookeite  $\text{LiAl}(\text{Si}_3\text{Al})\text{O}_{10}(\text{OH})_8$ : Experimental study and thermodynamical analysis of its compatibility relations in the  $\text{Li}_2\text{O}-\text{Al}_2\text{O}_3-\text{SiO}_2-\text{H}_2\text{O}$  system. - *Contrib. Mineral. Petrol.*, 108, 72-81.
- VIDAL, O., GOFFÉ, B. & THEYE, T. (1992): Experimental study of the stability of sudoite and magnesio-carpholite and calculation of a new petrogenetic grid for the system  $\text{FeO}-\text{MgO}-\text{Al}_2\text{O}_3-\text{SiO}_2-\text{H}_2\text{O}$ . - *J. metamorphic Geol.*, 10, 603-614.
- VUICHARD, J. P. & BALLÈVRE, M. (1988): Garnet-chloritoid equilibria in eclogitic pelitic rocks from the Sesia zone (Western Alps): their bearing on phase relations in high pressure metapelites. - *J. metamorphic Geol.*, 6, 135-157.

manuscript received: June 2004

manuscript accepted: July 2004