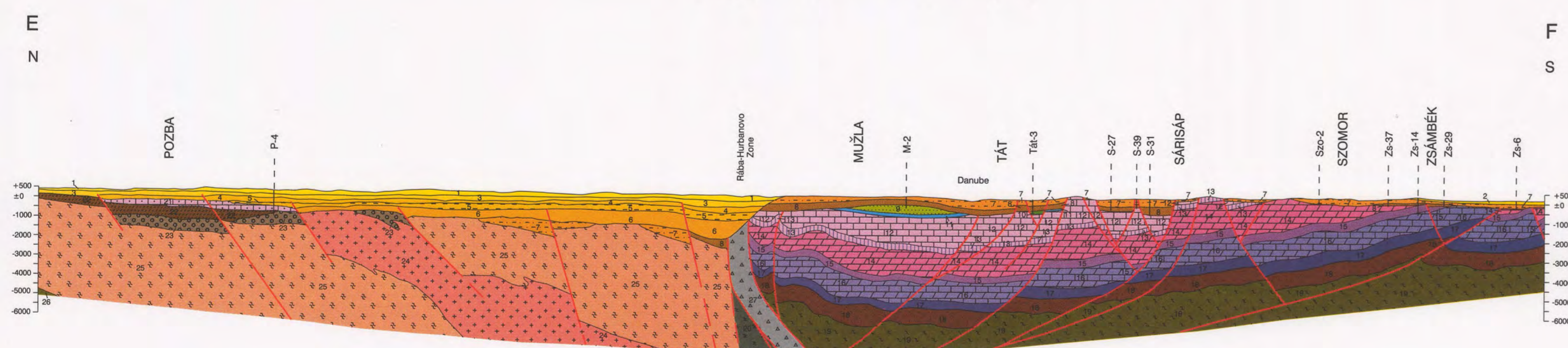


Geological cross-section between Komjatice Depression and Zsámbék

Scale = 1 : 200 000

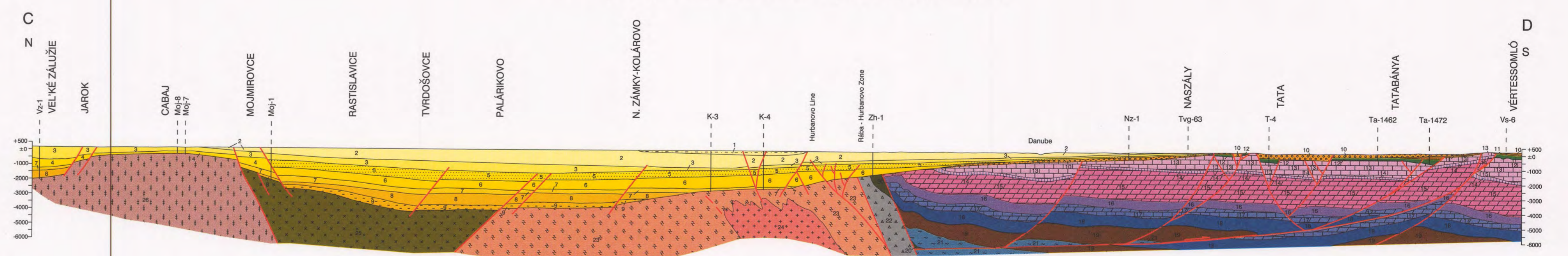
Compiled by: G. Császár, A. Dudko (Hungary), A. Nagy and J. Vozár (Slovak Republic)



Geological cross-section between Vel'ké Zálužie and Vértessomló

Scale = 1 : 200 000

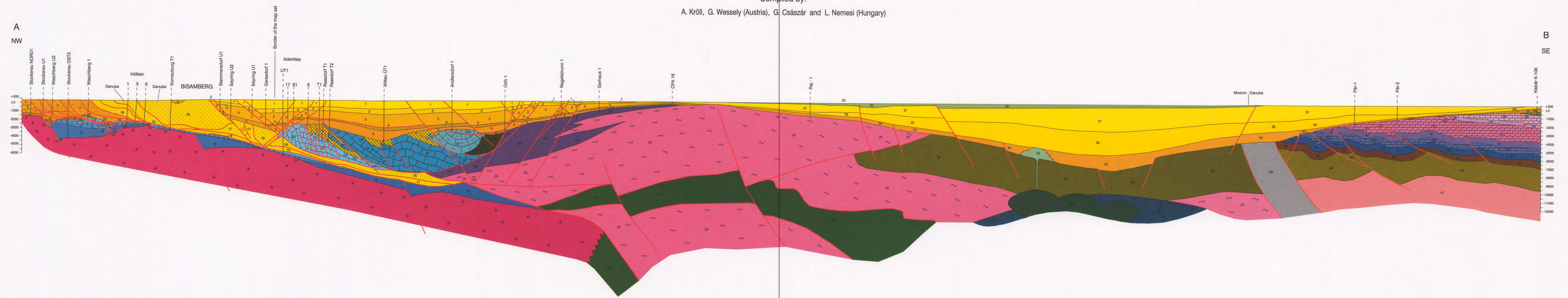
Compiled by: G. Császár (Hungary), D. Vass, M. Elecko, M. Pereszényi and J. Vozár (Slovak Republic)



Geological cross-section across the Vienna and Kisalföld Basins

Scale = 1 : 200 000

Compiled by: A. Kröll, G. Wessely (Austria), G. Császár and L. Nemesi (Hungary)



Geological cross-section between Komjatice Depression and Zsámbék

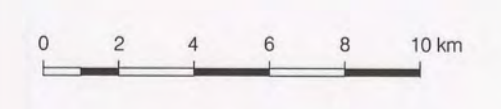
- Legend for Komjatice Depression and Zsámbék cross-section, listing geological units like Upper Miocene-Pliocene formations, Miocene and Pannonian formations, Sarmatian formations, etc.

Geological cross-section between Vel'ké Zálužie and Vértessomló

- Legend for Vel'ké Zálužie and Vértessomló cross-section, listing geological units like Romanian formations, Dacian formations, Pontian formations, etc.

Geological cross-section across the Vienna and Kisalföld Basins

- Legend for Vienna and Kisalföld Basins cross-section, listing geological units like Vienna Basin, Molasse and Waschberg Zone, Alpine-Carpathian Nappes, etc.



Publication information including 'Published by MAGYAR ÁLLAMI FÖLDTANI INTÉZET Geological Institute of Hungary', logos, and contact details.

