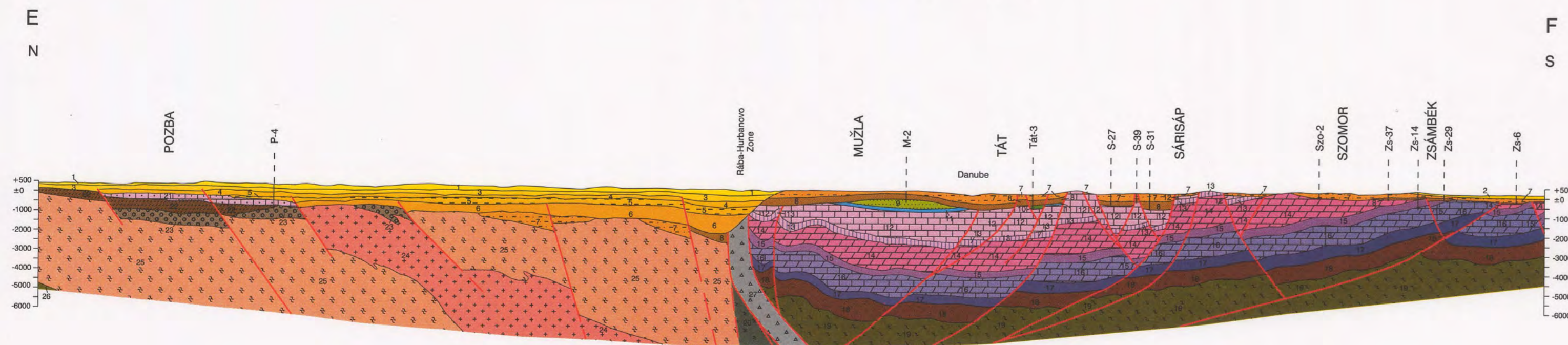


Geological cross-section between Komjatice Depression and Zsámbék

Scale = 1 : 200 000

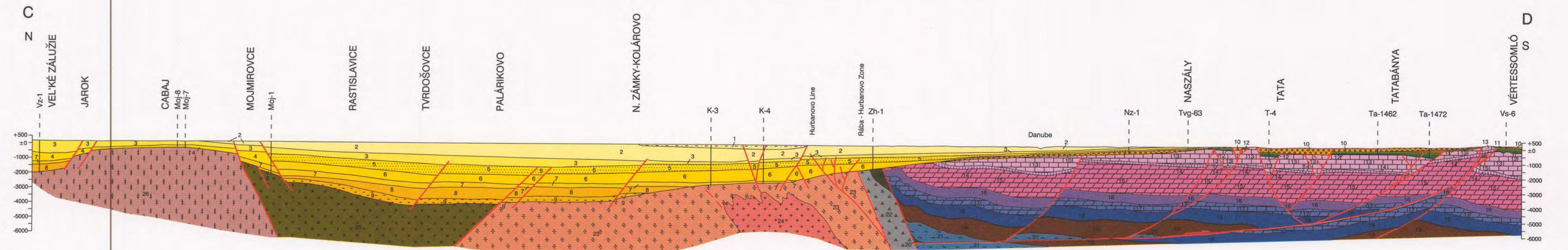
Compiled by: G. Császár, A. Dudko (Hungary), A. Nagy and J. Vozár (Slovak Republic)



Geological cross-section between Vel'ké Zálužie and Vértessomló

Scale = 1 : 200 000

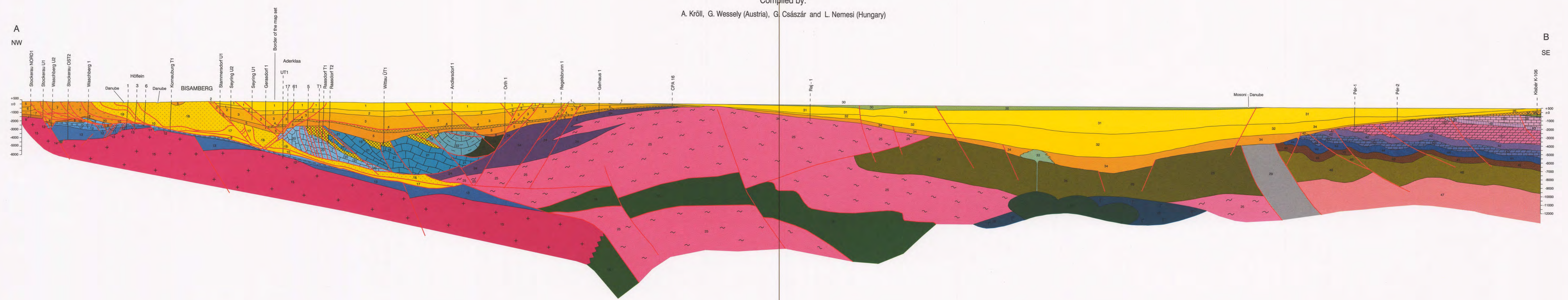
Compiled by: G. Császár (Hungary), D. Vass, M. Elecko, M. Pereszényi and J. Vozár (Slovak Republic)



Geological cross-section across the Vienna and Kisalföld Basins

Scale = 1 : 200 000

Compiled by: A. Kröll, G. Wessely (Austria), G. Császár and L. Nemesi (Hungary)



Geological cross-section between Komjatice Depression and Zsámbék

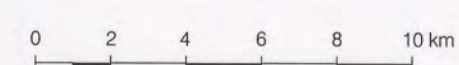
- Legend for Komjatice Depression and Zsámbék cross-section, listing geological formations such as Upper Miocene-Pliocene, Badenian, and various Triassic and Permian units.

Geological cross-section between Vel'ké Zálužie and Vértessomló

- Legend for Vel'ké Zálužie and Vértessomló cross-section, listing geological formations including Roman, Dacian, Badenian, and various Triassic and Permian units.

Geological cross-section across the Vienna and Kisalföld Basins

- Legend for Vienna and Kisalföld Basins cross-section, listing geological formations such as Vienna Basin, Molasse, and various Mesozoic and Quaternary units.



Publication information including the publisher (MAGYAR ÁLLAMI FÖLDTANI INTÉZET), logos, and contact details for the Geological Institute of Hungary.

