

GÖPFRITZ AREA, AUSTRIA

synoptic map of geology and geotechnics

1 : 10.000

Geologisch geotechnische Grundlagenkarte des Gebietes von Göpfritz

Geologische Oberflächenkartierung 1964-1967
 Dr. G. MÜLLER, S. G. A. E.
 Bohrergebnisse 1965-1967, bearbeitet von
 Dr. G. MÜLLER und Dr. A. MATURA
 Geophysik, Refraktionsseismik und Geomagnetik
 Prof. Dr. F. WEBER, Leoben
 Gesamtbearbeitung: GEOLOGISCHE BUNDESANSTALT
 abgeschlossen Sept. 1967

EDITION A : Topography, Hydrology and Surface Geology

EDITION B : Topography, Geology (Surface and Subsurface)
 Geophysics

LEGEND :

TOPOGRAPHY: see key official map 1:50000

- 57C core drilling 1967, dept in m
- S1 test pit 1967, 1-11
- 57N percussion needle 1967, dept in m
- E 500 500 inhabitants

HYDROLOGY: creeks wet surface

SURFACE GEOLOGY (exposures and surface observations)

- granite
- gneiss, mica schist
- serpentine
- quartzite
- graphite schist
- marble
- rock fragments
- gravel

LEGEND : (continued)

strike and dip of the rocks:

- ⊥ 0°
- ⊥ 0 - 45°
- ⊥ 45 - 80°
- ⊥ 80 - 90°

Surface: see above

Subsurface and general:

- granulite series with serpentines
- weathering plus quaternary >7m
- gneiss series
- weathering plus quaternary >7m

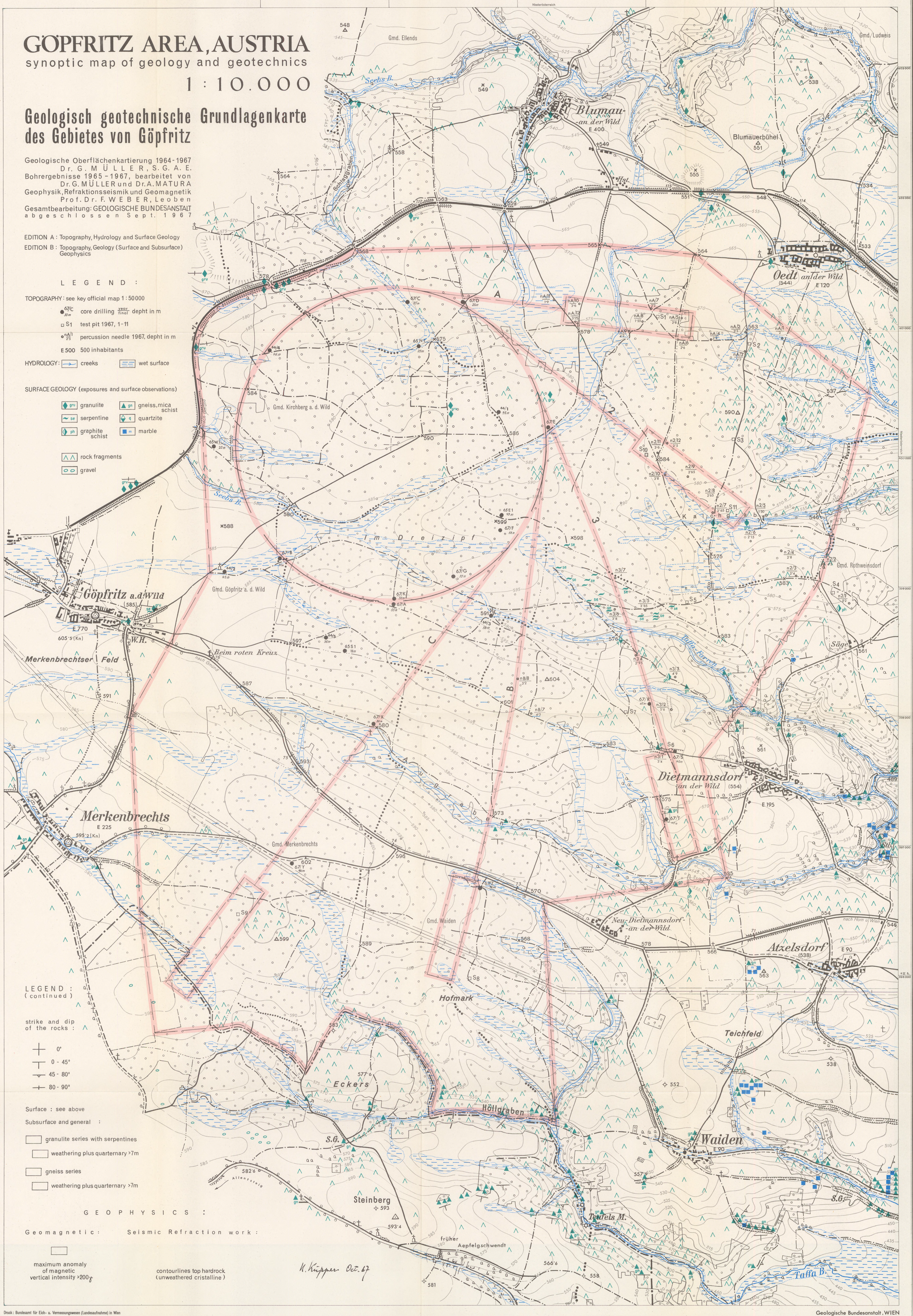
GEOPHYSICS :

Geomagnetic: Seismic Refraction work:

maximum anomaly of magnetic vertical intensity >200

contourlines top hardrock (unweathered crystalline)

K. Krippner Oct. 67



GÖPFRITZ AREA, AUSTRIA

synoptic map of geology and geotechnics

1 : 10.000

Geologisch geotechnische Grundlagenkarte des Gebietes von Göpfritz

Geologische Oberflächenkartierung 1964-1967
D. r. G. M Ü L L E R, S. G. A. E.
Bohrergebnisse 1965-1967, bearbeitet von
Dr. G. M Ü L L E R und Dr. A. M A T U R A
Geophysik, Refraktionsseismik und Geomagnetik
Prof. Dr. F. W E B E R, Leoben
Gesamtbearbeitung: GEOLOGISCHE BUNDESANSTALT
abgeschlossen Sept. 1967

EDITION A : Topography, Hydrology and Surface Geology
EDITION B : Topography, Geology (Surface and Subsurface)
Geophysics

LEGEND :

TOPOGRAPHY: see key official map 1:50000

- 67C core drilling final depth in m
- S1 test pit 1967, 1-11
- 67A percussion needle 1967, depth in m
- E 500 500 inhabitants

HYDROLOGY: creeks wet surface

SURFACE GEOLOGY (exposures and surface observations)

- granite
- serpentine
- graphite schist
- rock fragments
- gravel
- gneiss, mica schist
- quartzite
- marble

LEGEND (continued)

strike and dip of the rocks :

- 0°
- 0 - 45°
- 45 - 80°
- 80 - 90°

Surface : see above

Subsurface and general :

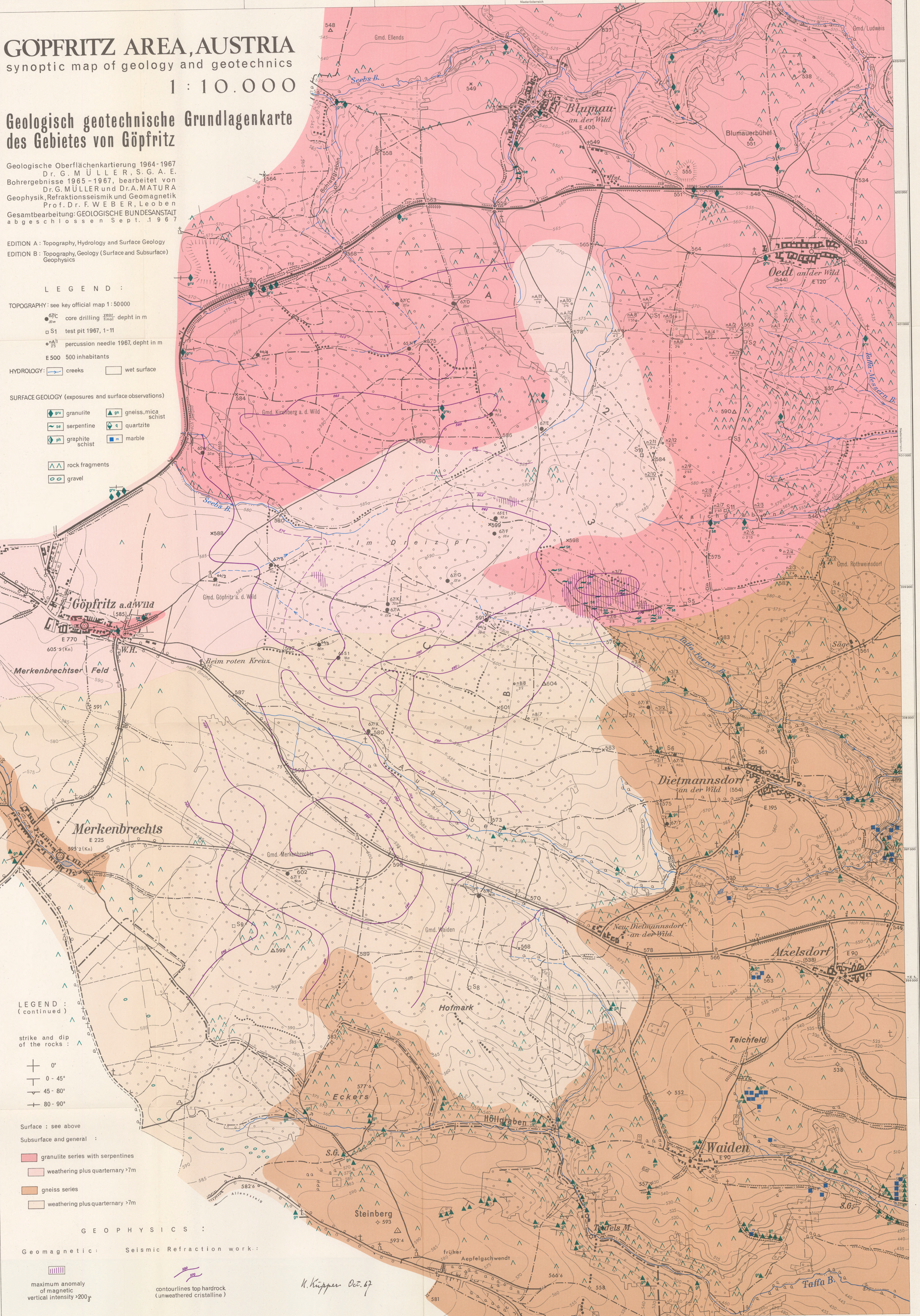
- granite series with serpentines
- weathering plus quaternary >7m
- gneiss series
- weathering plus quaternary >7m

G E O P H Y S I C S :

Geomagnetic : Seismic Refraction work :

- maximum anomaly of magnetic vertical intensity >200γ
- contourlines top hardrock (unweathered crystalline)

K. Krippner Oct. 67



GÖPFRTZ AREA, AUSTRIA

N-S SECTIONS SUMMARIZING GEOLOGICAL AND GEOTECHNICAL DATA, OBTAINED 1964/1967

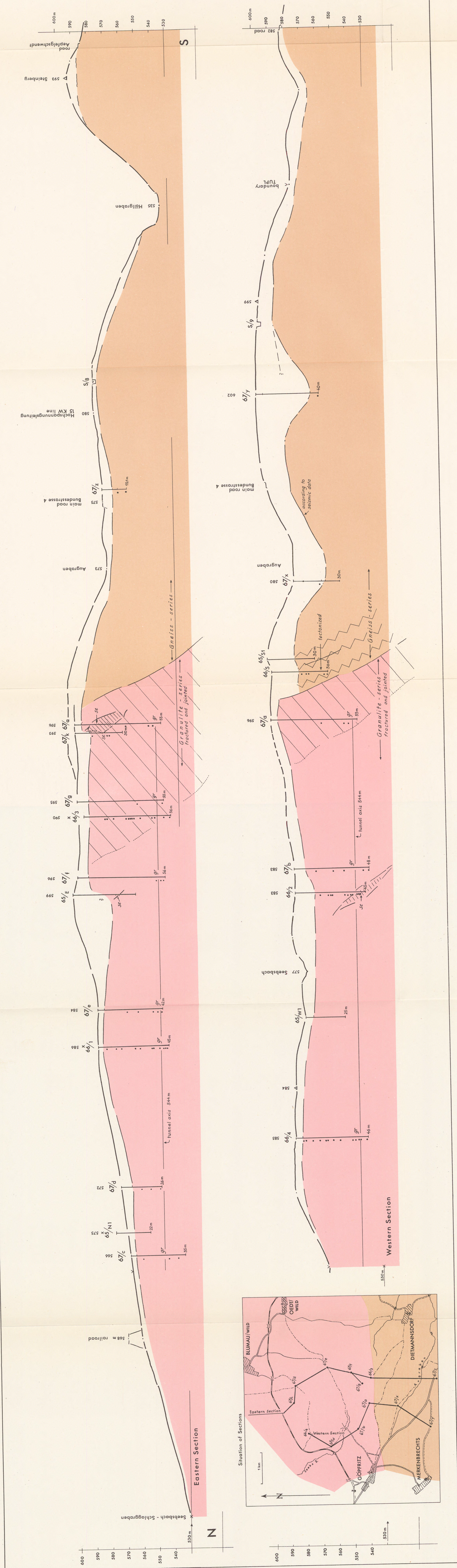
HORIZONTAL 1 : 10 000 . VERTICAL 1 : 1 000

GEOLOGISCH - GEOTECHNISCHE ÜBERSICHTSPROFILE

UNTERSUCHUNGSERGEBNISSE 1964/1967
Bearbeiter: Dr. G. Müller-S. G. S., Dr. A. Matura, G. B. et al.
Gesamtleitung: Geologische Bundesanstalt

LEGENDE :

- Granulite-series, fractured
- Gneiss-series, tectonized
- Serpentine
- softrock-cover generalized
- 67/c Samples checked by slide investigation
- 67/3 well outside projection plane
- S₂ test pit 1967 with 1/2



Druck: Bundesamt für Eich- u. Vermessungswesen (Landesvermessung) in Wien