



EUROPEAN UNION
EUROPEAN REGIONAL
DEVELOPMENT FUND

This project is implemented through the
CENTRAL EUROPE Programme, co-financed by the ERDF

Enclosure 4e



Resource Map Series

Specific Identified Resources for neogene sediments

1:500 000

Compiled by: Lenkey L.², Zekiri F.¹

2012

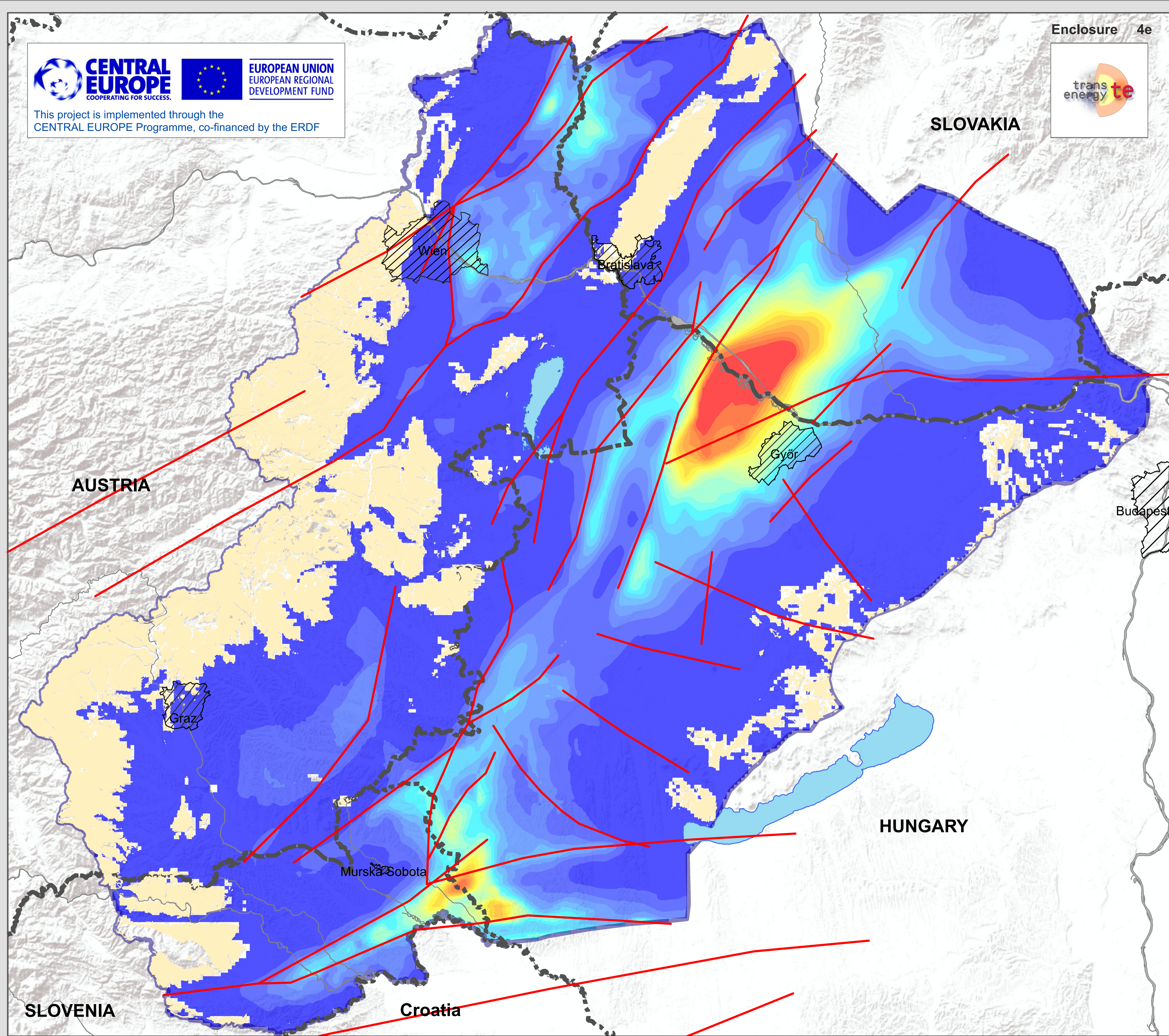
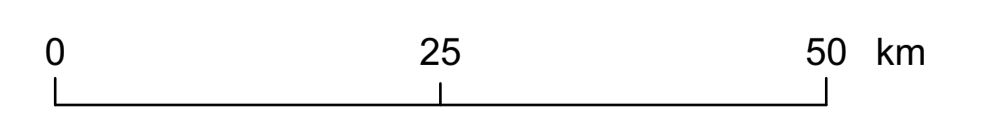
- 1 - Geological Survey of Austria (AT)
- 2 - Eötvös Loránd University (HU)

Legend

- city
- outcrop of pretertiary basement
- national borders
- main river
- lake
- project area
- tectonic line

Specific Identified Resources [GJ/m²]

- 0 - 40
- 40 - 80
- 80 - 120
- 120 - 160
- 160 - 200
- 200 - 240
- 240 - 280
- 280 - 320
- 320 - 360
- 360 - 400
- 400 - 440
- 440 - 480
- 480 - 520
- 520 - 560
- 560 - 600
- 600 - 640
- 640 - 680
- 680 - 720
- 720 - 760
- 760 - 800



SLOVENIA

Croatia

HUNGARY

SLOVAKIA

