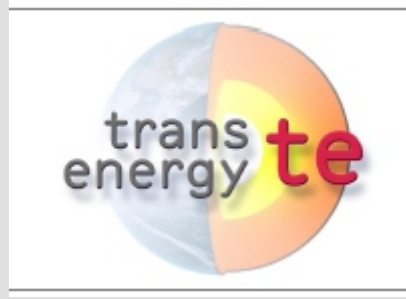




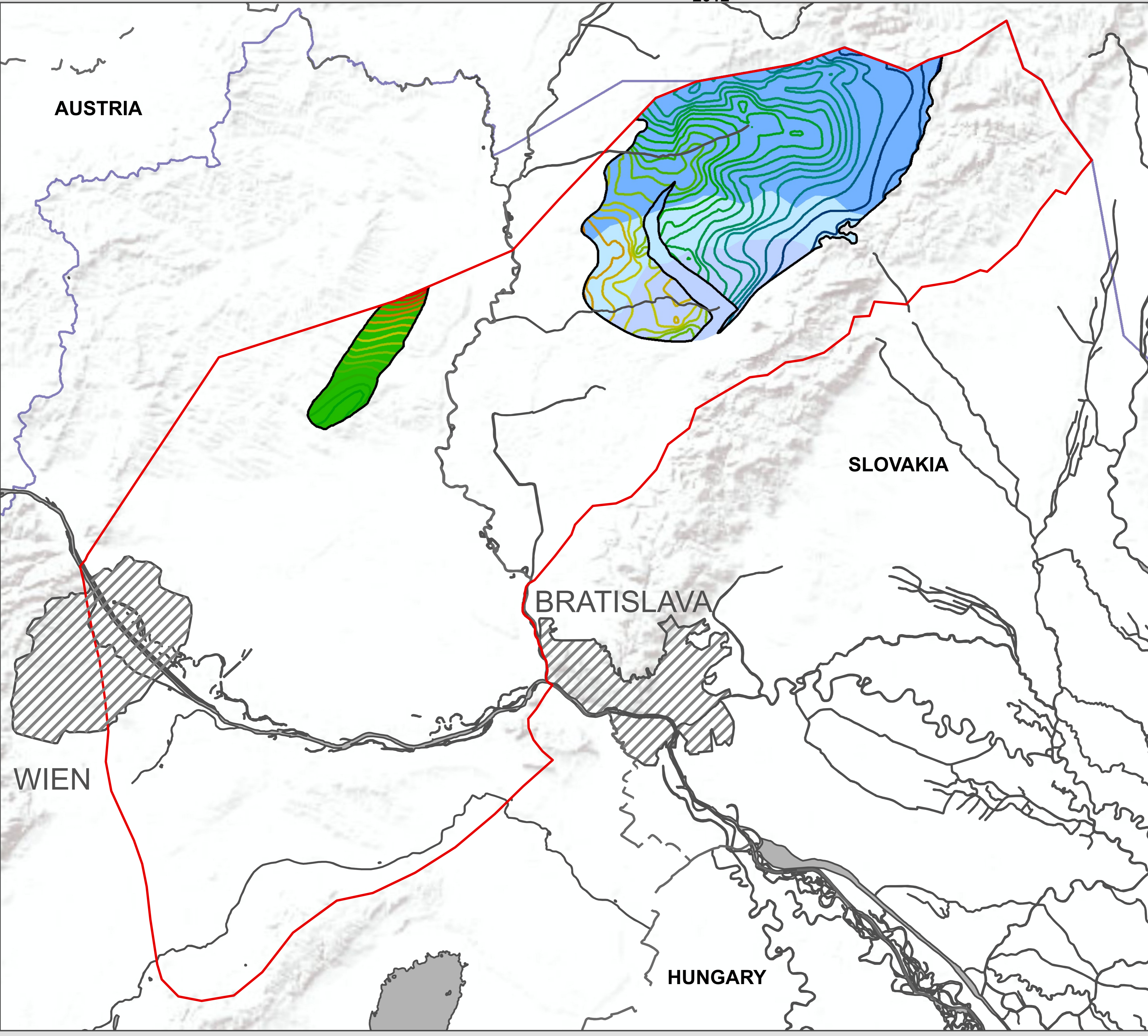
Pilot Area Vienna Basin

Scale 1:200 000

Compiled by: Berka Rudolf, Bottig Magdalena, Brüstle Anna Katharina, Hörfarer Christine, Schubert Gerhard, Weilbold Julia 2012



This project is implemented through the CENTRAL EUROPE Programme, co-financed by the ERDF



Legend		Fazies		Elevation		
pilot area	m1m Luzice Formation	-4600	-3200	-1200		
borders	delta sands	-4400	-3000	-1000		
main river	fluvatile - limnic	-4200	-2800	-800		
water	Bockfliess Fm	-4000	-2600	-600		
water line		-3800	-2400	-400		
lake		-3600	-2200	-200		
city		-3400	-2000	-0		
supra area			-1800	200		
world terrain base			-1600	400		
			-1400			

