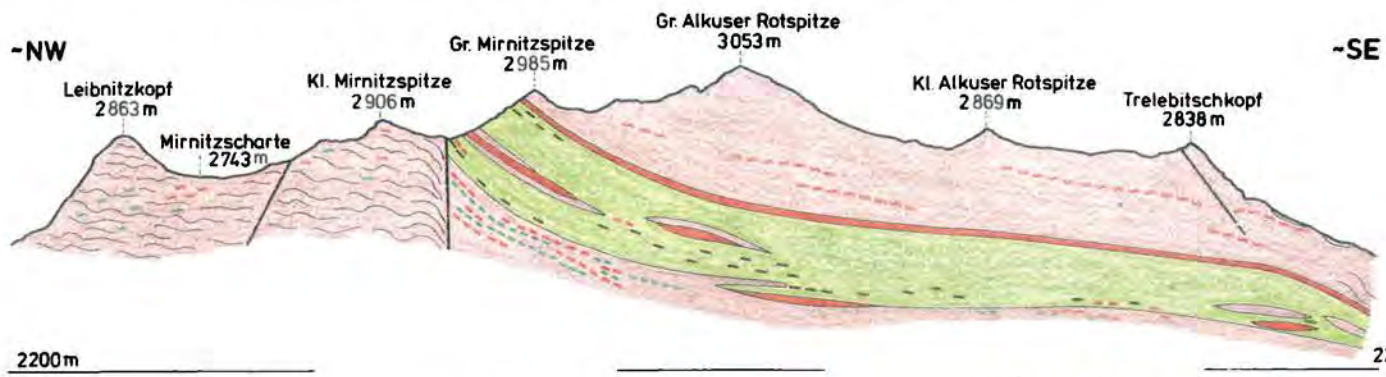
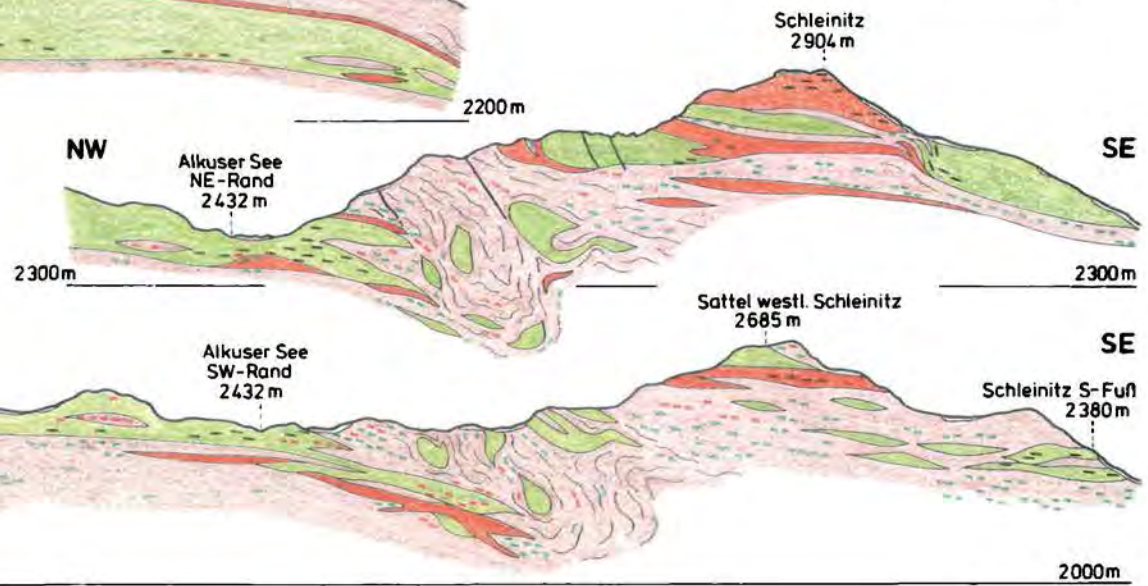


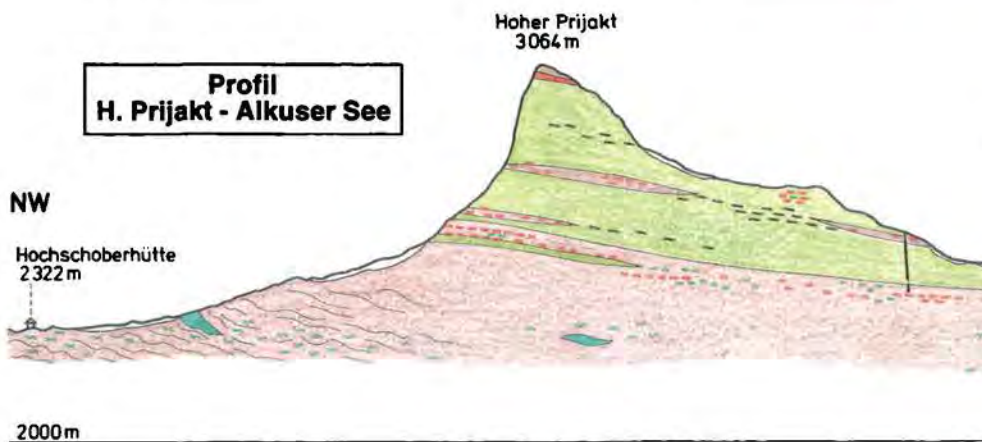
**Profil Leibnitzkopf - Gr. Alkuser Rotspitze - Trelebitschkopf**



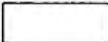





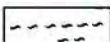
**Profil Alkuser See - Schleinitz**



**Profil H. Prijakt - Alkuser See**



**Legende**

	Quartäre Bedeckung		Mikroclin(augen)gneis		Störung, Bruch
	Paragneis, Schiefergneis, Glimmerschiefer		Amphibolit		
	Eklogit, Eklogitamphibolit, Amphibolit		Pegmatitgneis		

0 500 1000  
Meter

Abb. 1